

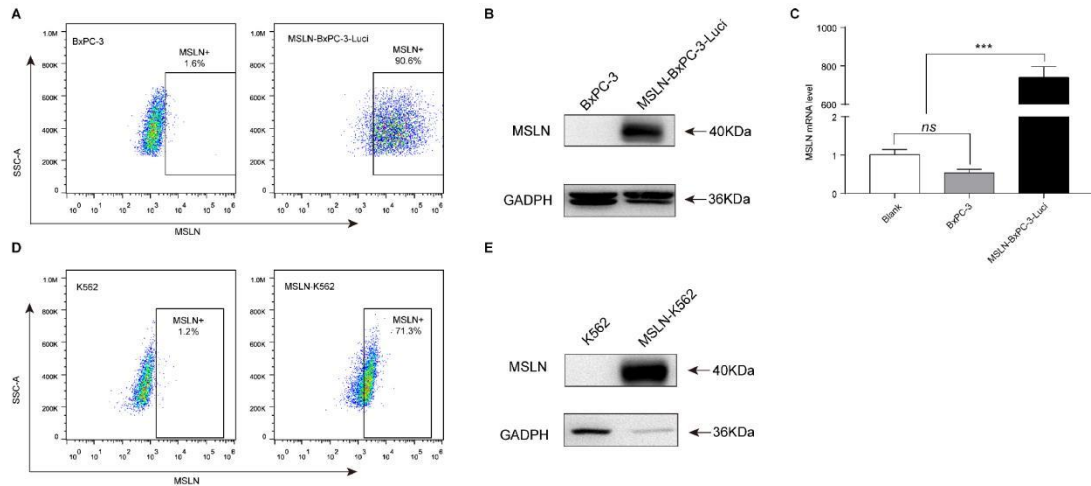
OMTO, Volume 16

Supplemental Information

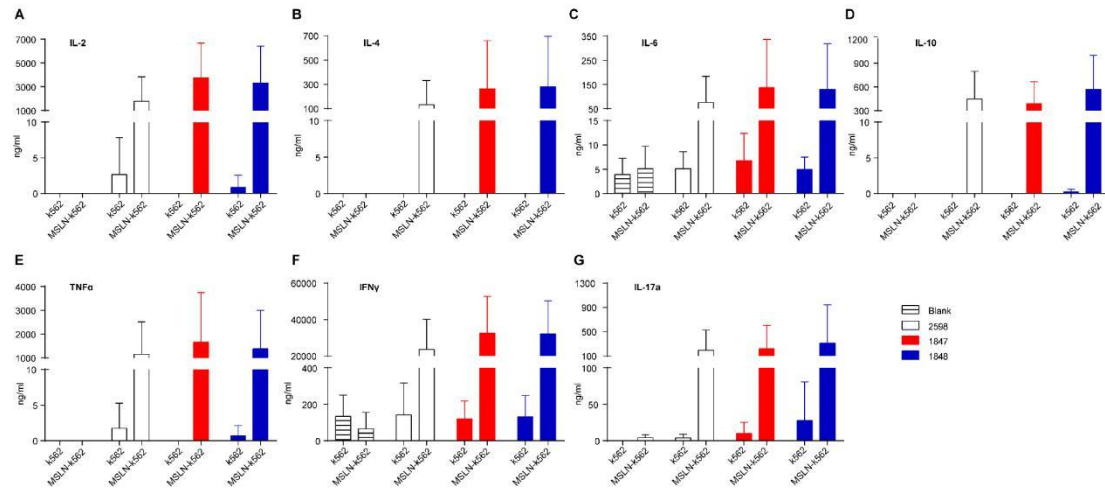
**Inhibition of Cholesterol Esterification Enzyme
Enhances the Potency of Human Chimeric Antigen
Receptor T Cells against Pancreatic Carcinoma**

Lei Zhao, Yang Liu, Fuya Zhao, Ye Jin, Jing Feng, Rui Geng, Jiayu Sun, Liqing Kang, Lei Yu, and Yunwei Wei

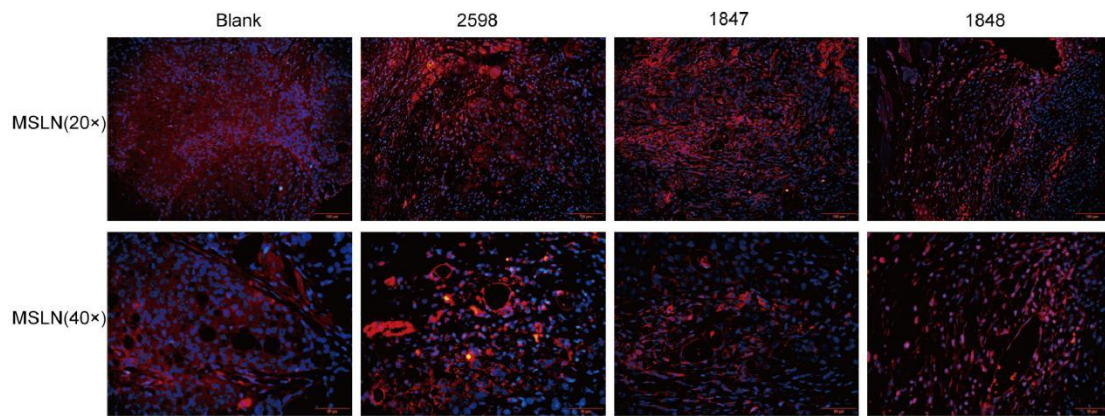
Supplementary Figure S1. The cytokine release in all MSLN-negative target groups after standard LDH release assays.



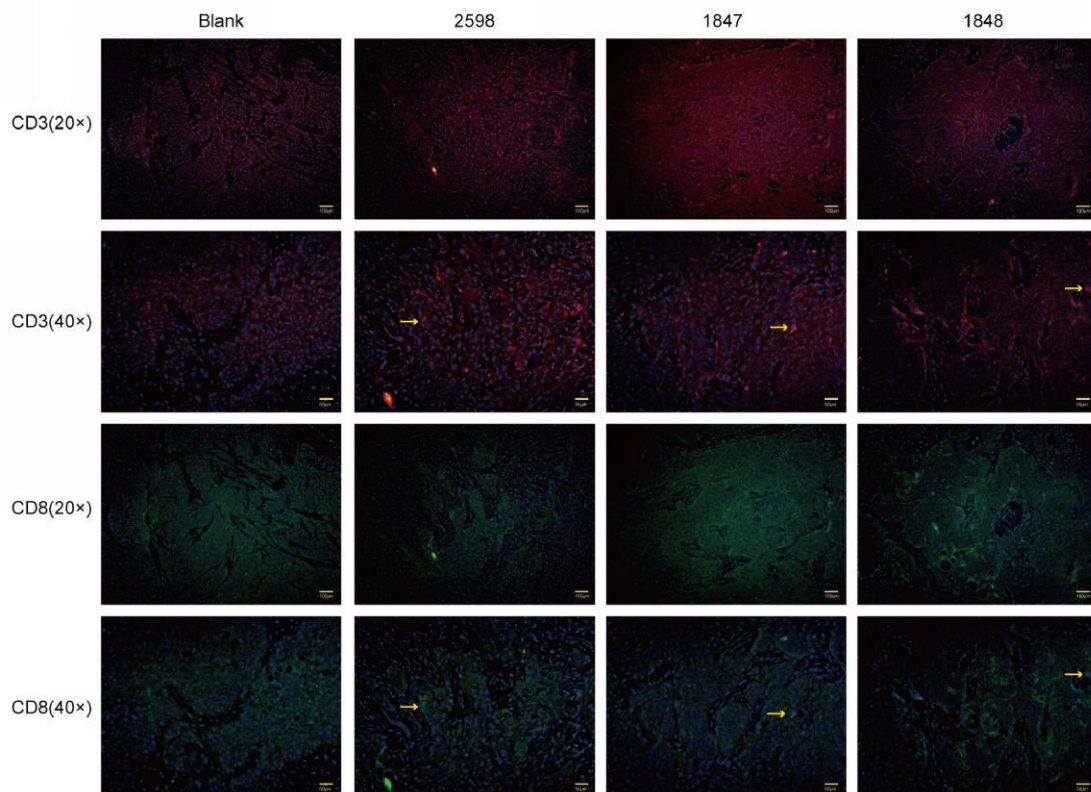
Supplementary Figure S2. Immunofluorescence image showing MSLN expression in mouse PC tissue. MSLN-positive cell membrane, red; cell nucleus, blue.



Supplementary Figure S3. Immunofluorescence image showing targeting MSLN CAR-T cell infiltration in mouse PC tissue. MSLN-positive cell membrane, red; cell nucleus, blue. Representative targeting MSLN CAR-T cells in OC tissue are indicated by the yellow arrow.



Supplementary Figure S4. Detection of MSLN expression in target cells. MSLN expression levels in BxPC-3 and MSLN-BxPC-3-Luci cells as determined using (A) flow cytometry, (B) western blotting, and (C) quantitative real-time RT-PCR. (D) Flow cytometry profile and (E) western blot image showing MSLN expression in K562 cells and MSLN-K562 cells.



Supplementary Table S1. Profile showing the CAR transduction efficiency of targeting MSLN CAR-T cells.

	CAR-T-2598	CAR-T-1847	CAR-T-1848
Case 1	75.97%	71.20%	66.23%
Case 2	70.13%	70.53%	58.73%
Case 3	65.17%	58.43%	54.57%
Case 4	21.93%	12.63%	14.87%
Case 5	20.23%	13.97%	14.63%
Case 6	30.30%	18.30%	13.40%

Supplementary Table S2. Patient and healthy control group information.

	Normal (n = 5)	^a AP (n = 6)	^b PC (n = 9)	^c M-PC (n = 4)
Gender				
female	0	3	2	0
male	5	3	7	4
Age(mean±SE)	28.2±1.2	58.3±11.3	64.0±9.7	56.8±3.9

^aAP: Acute Pancreatitis; ^bPC: Pancreatic Cancer; ^cM-PC: Pancreatic Cancer with Metastasis