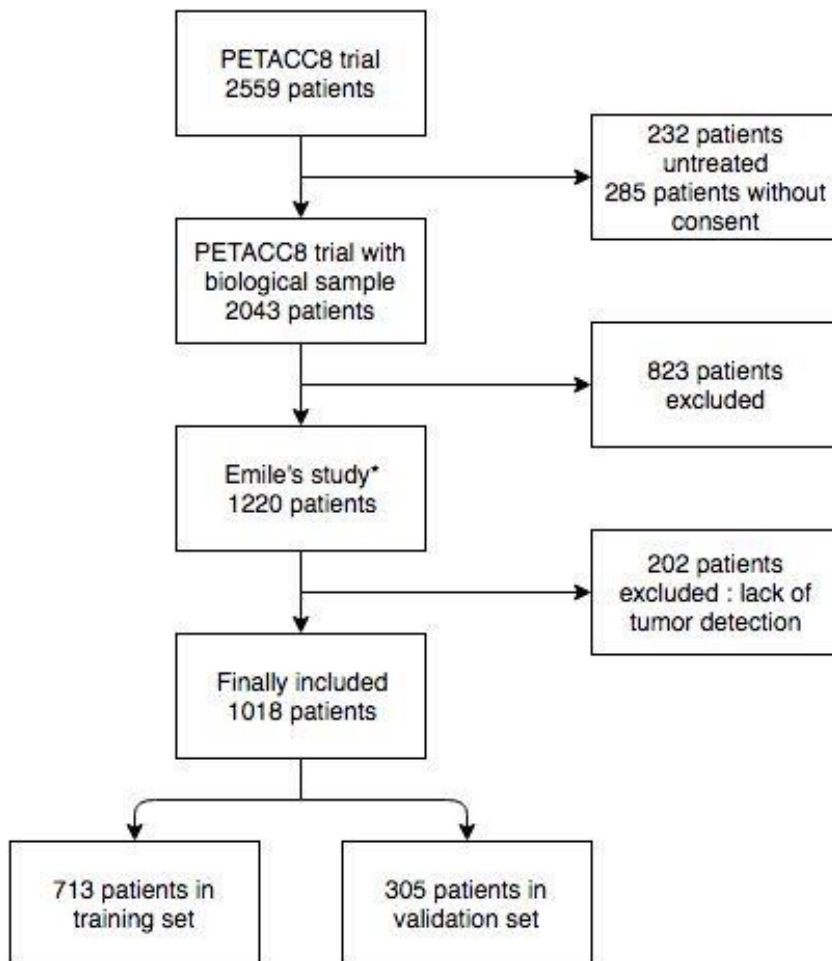
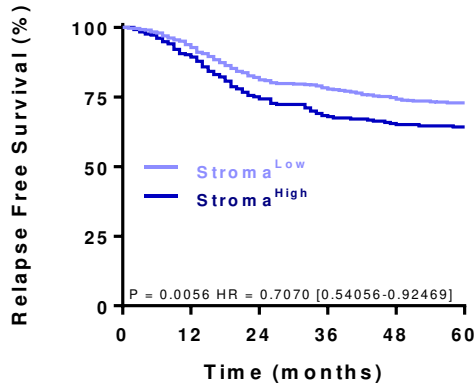


**Figure S1: Flowchart of PETACC8 cohort analysis**

\*Emile J-F, Eur J Cancer, 2017.

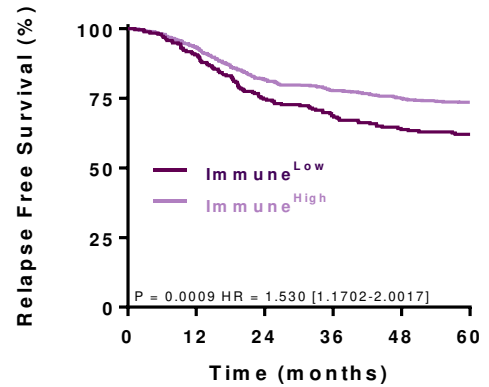
## Figure S2: Kaplan-Meier of interest

### A



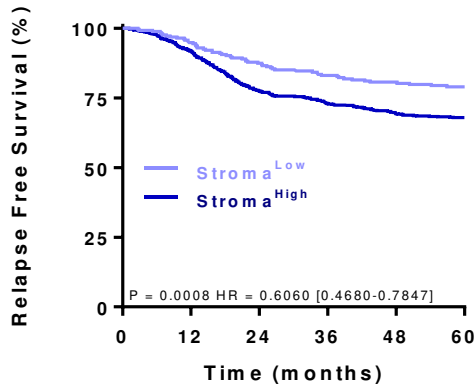
Number	763	714	622	590	533	505
at risk	255	228	189	170	158	152

### B



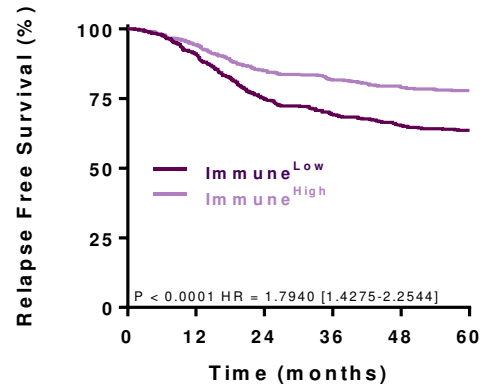
Number	255	231	188	170	153	142
at risk	763	709	620	587	550	513

### C



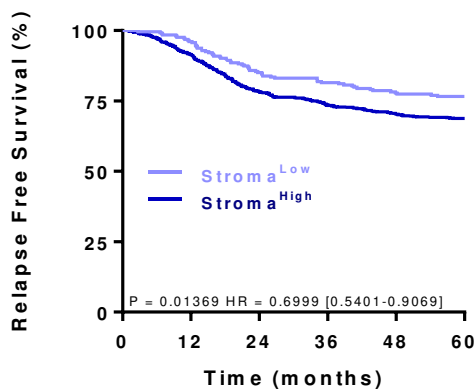
Number	255	242	223	210	196	181
at risk	763	698	586	547	507	474

### D



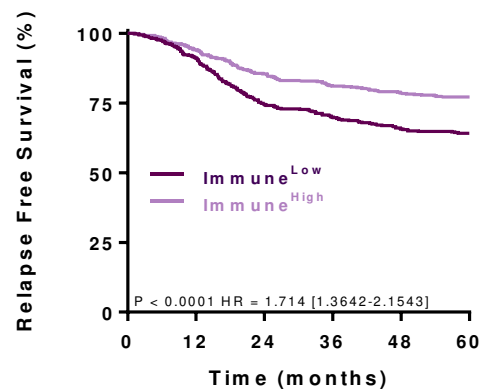
Number	509	461	377	345	315	293
at risk	509	479	432	412	387	362

### E



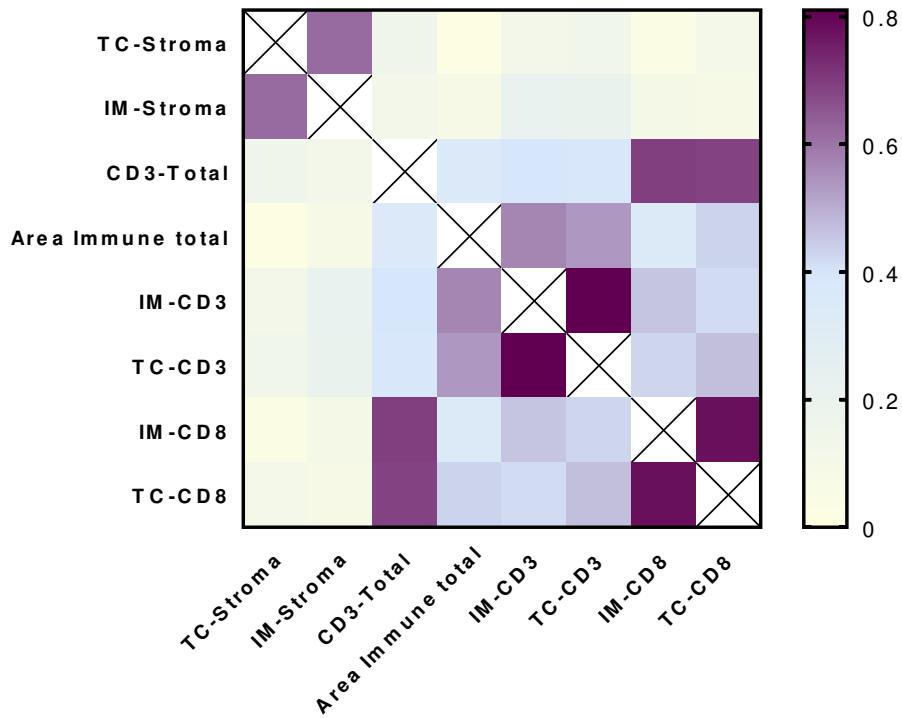
Number	255	245	217	204	188	177
at risk	763	695	592	553	515	478

### F



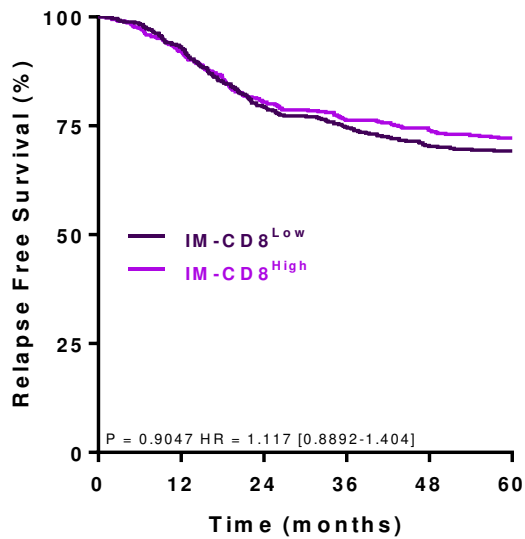
Number	509	462	375	349	319	293
at risk	509	478	434	408	383	362

## Figure S3: Correlation between immune parameters and areas of interest



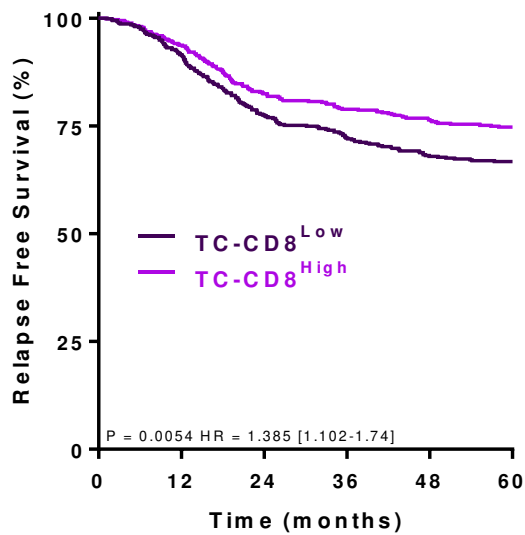
## Figure S4: Pronostic value of immune T cells analysis

### A



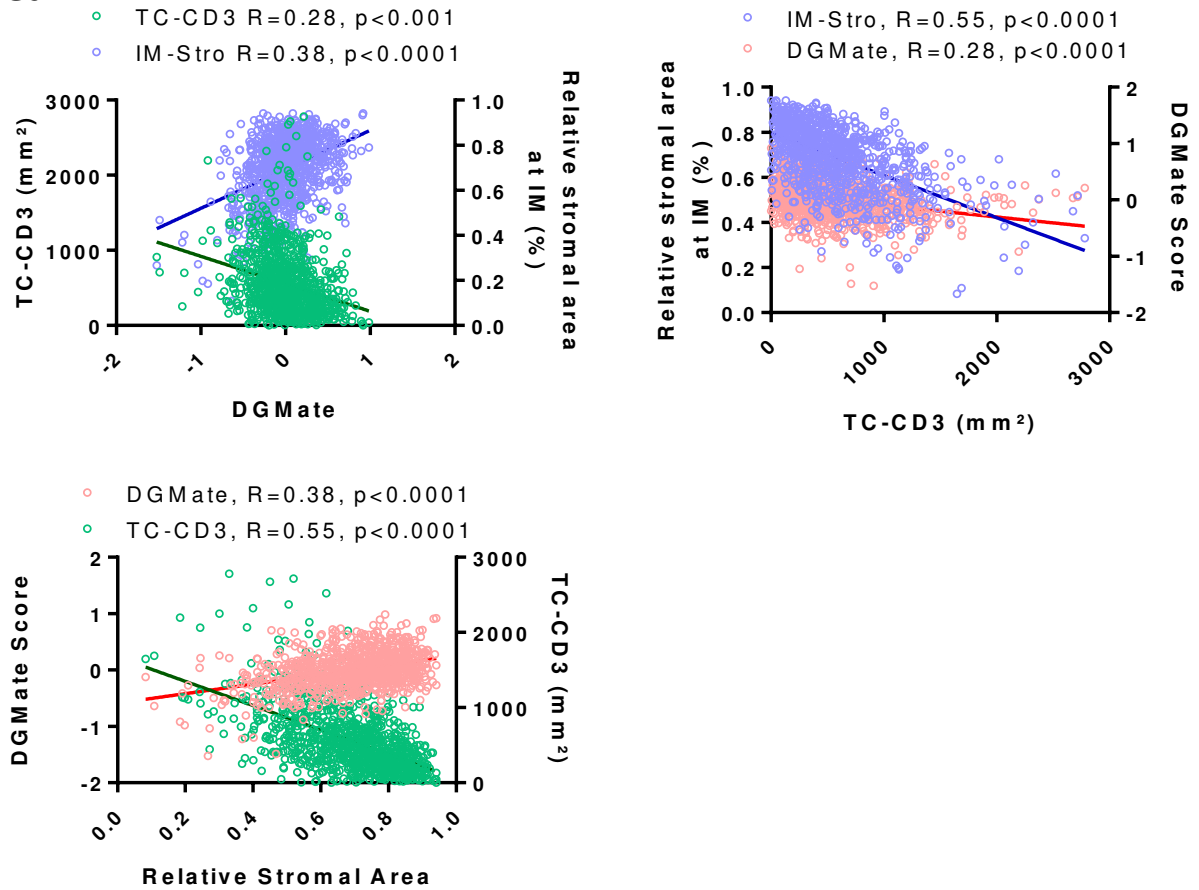
Number	509	474	402	375	344	319
at risk	509	467	408	383	360	336

### B



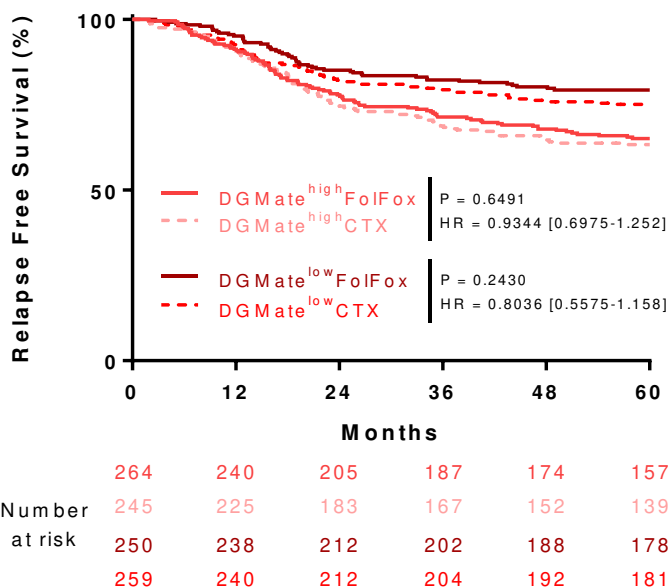
Number	509	466	393	363	336	314
at risk	509	475	417	395	368	341

## Figure S5: Correlation between TC-CD3<sup>+</sup>, DGMate and relative stroma area



## Figure S6: Survival comparison of composite variables depending on adjuvant chemotherapy

A



B

