

Supplemental Table 1. Multivariable logistic regression of association of variables with neoadjuvant chemotherapy adjustment for renal function (n=366 patients).

Variable	OR	95% CI	P value
Hispanic	0.59	0.28-	0.17
Age	0.95	1.24	0.03
		0.92-	
		0.99	
Sex (female)	1.34	0.53-	0.53
		3.34	
BMI (kg/m ²)	0.99	0.92-	0.75
		1.06	
Comorbidity Index	0.71	0.48-	0.09
		1.06	
Distance (miles)	1.08	0.82-	0.60
		1.42	
Pathologic T stage	1.04	0.86-	0.70
		1.26	
Creatinine (mg/dL)	1.25	0.76-	0.38
		2.05	
Median Income	0.93	0.76-	0.48
		1.14	
Percent Education	0.98	0.95-	0.36
		1.02	

Supplemental Table 2. Multivariable logistic regression of association of variables with laparoscopic cystectomy excluding patients enrolled in laparoscopic vs. open randomized trial (Total n=315 patients).

Variable	OR	95% CI	P value
Hispanic	1.34	0.49-	0.56
Age	1.03	3.64	0.29
		0.97-	
		1.09	
Sex (female)	0.87	0.26-	0.81
		2.85	
BMI (kg/m ²)	1.02	0.92-	0.69
		1.13	
Comorbidity Index	1.31	0.83-	0.24
		2.05	
Distance (miles)	1.03	0.71-	0.87
		1.49	
Pathologic T stage	0.85	0.66-	0.19
		1.09	

Creatinine (mg/dL)	0.90	0.40-2.06	0.81
Median Income	1.01	0.79-1.30	0.92
Percent Education	0.99	0.93-1.04	0.60

Supplemental Table 3. Multivariable linear regression of association of variables with number of lymph nodes removed excluding patients enrolled in extended vs. standard randomized trial (Total n=310 patients).

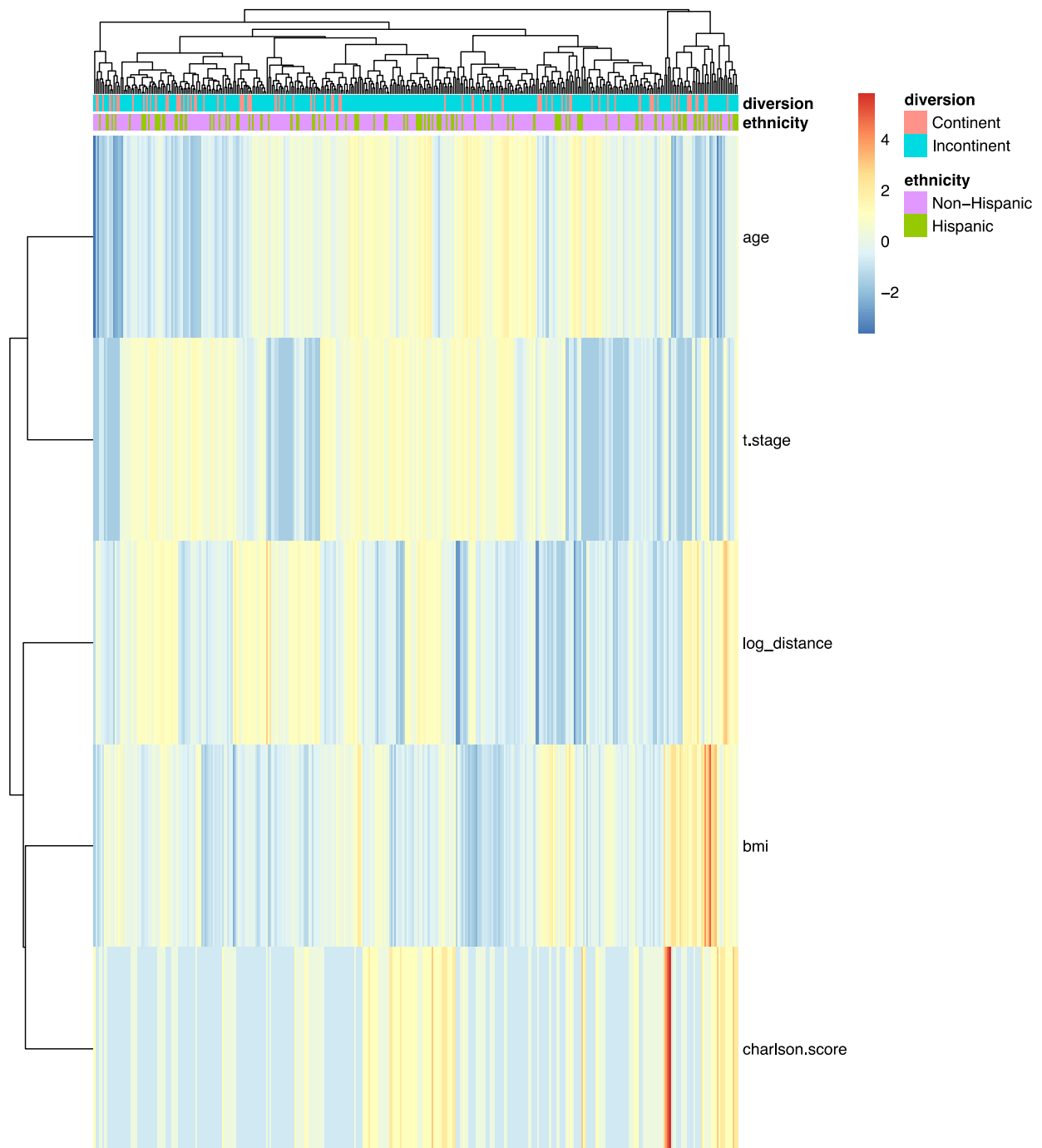
Variable	Coefficient t	95% CI	P value
Hispanic	-1.06	-4.16-2.04	0.50
Age	-0.15	-0.32-0.02	0.08
Sex (female)	-1.84	-5.83-2.16	0.38
BMI (kg/m ²)	0.14	-0.17-0.45	0.37
Comorbidity Index	-0.45	-2.00-1.11	0.57
Distance (miles)	0.85	-0.31-2.01	0.15
Pathologic T stage	-0.68	-1.48-0.11	0.09
Creatinine (mg/dL)	-0.64	-2.93-1.64	0.58
Median Income	0.39	-0.46-1.25	0.37
Percent Education	0.01	-0.15-0.17	0.90

Supplemental Table 4. Multivariable logistic regression of association of variables with urinary diversion, including patients with no serum creatinine value available (Total n=507).

Variable	OR	95% CI	P value
Hispanic	0.41	0.16-	0.05
Age	0.96	1.03 0.92-	0.10
		1.01	
Sex (female)	0.16	0.0-0.84	0.03
BMI (kg/m ²)	1.06	0.97-	0.18
		1.15	
Comorbidity Index	0.42	0.21-	0.01
		0.81	
Distance (miles)	0.96	0.69-	0.83
		1.35	
Pathologic T stage	0.94	0.75-	0.56
		1.17	
Median Income	0.99	0.77-	0.92
		1.27	
Percent Education	1.00	0.96-	1.00
		1.04	

Supplement Figure S1. Summary Panel: A heatmap of patient covariates.

Unsupervised hierarchical clustering based on clinical covariates after they have been centered and scaled around zero.



Supplement Figure S2. Odds of receipt of outcome measures across sex and age. Adjusted odds ratio with 95% confidence interval looking at receipt of treatment modality across age range and ethnicity with all other variables in model held constant.

