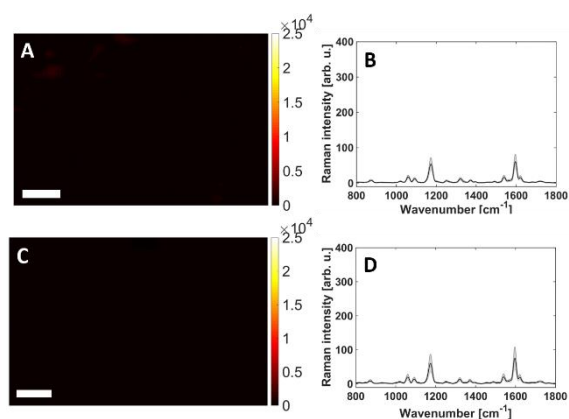


## Supporting Information

### Localization of PD-L1 on single cancer cells by iSERS microscopy with Au/Au core/satellite nanoparticles.

*Elzbieta Stepula*<sup>1</sup>, *Matthias König*<sup>1</sup>, *Xin-Ping Wang*<sup>1</sup>, *Janina Levermann*<sup>2</sup>, *Tobias Schimming*<sup>3</sup>, *Sabine Kasimir-Bauer*<sup>2</sup>, *Bastian Schilling*<sup>3,4</sup> and *Sebastian Schlücker*<sup>1\*</sup>



**Figure S1.** Negative control experiments. A and C: iSERS false-color images, B and D: mean value SERS spectrum. Scale bar is 5  $\mu\text{m}$ .