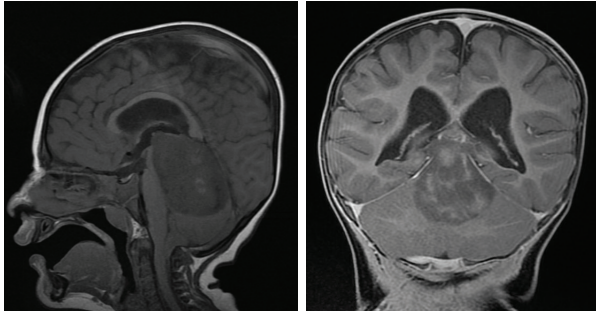


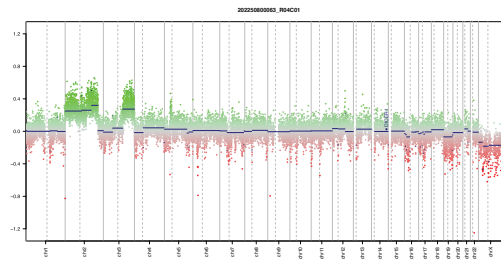
a

SJPB15

Male, 1.42 years, M⁰, histology: pineoblastoma
 SJYC07 therapy with focal radiation
 Developed PD and DOD 0.59 year after Dx

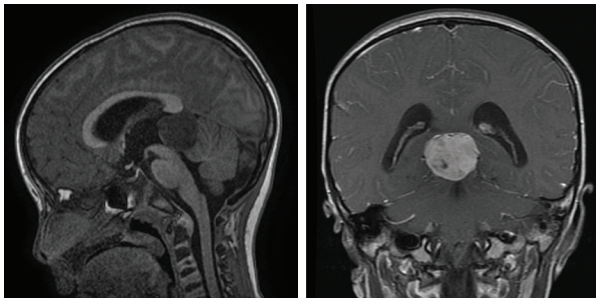


Tumor only panel sequencing
DICER1
c.2771T>G p.L924*
c.5425G>A p.G1809R

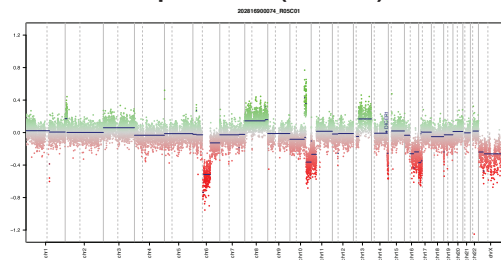


SJPB16

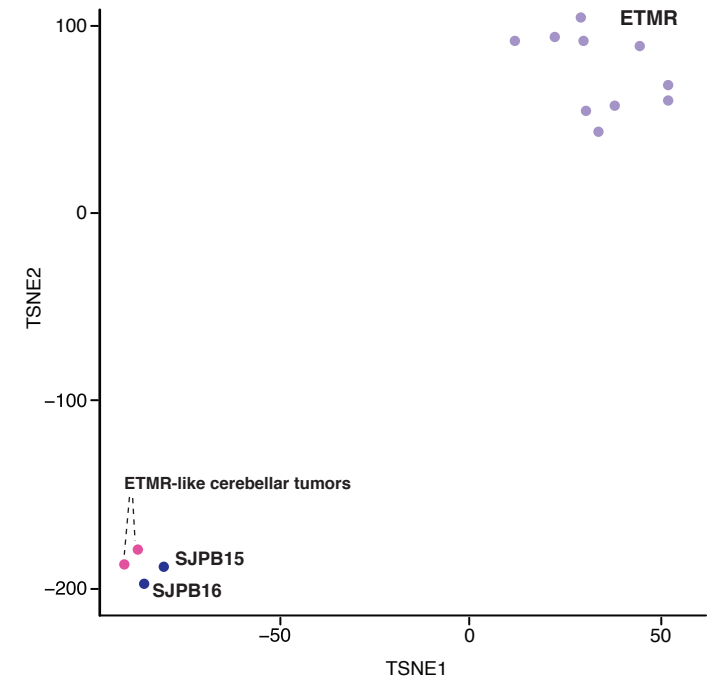
Male, 4.73 years, M⁰, histology: pineal anlage tumor
 SJMB03-like therapy with CSI
 Developed PD and DOD 1.30 years after Dx



Paired tumor/germline WES
DICER1
c.4300del p.E1434fs (somatic)
c.5113G>A p. E1705K (somatic)



b



SJPB15 and SJPB16 (dark blue) clustered with two tumors designated “ETMR-like infantile cerebellar embryonal tumors” by Uro-Coste and colleagues (pink), but are less similar to ten C19MC-altered ETMR samples obtained in-house (purple). All four “ETMR-like” tumors are characterized by a lack of C19MC amplification, as well as presence of both nonsense and missense *DICER1* mutations.