

OMTN, Volume 20

## Supplemental Information

### Long Noncoding RNA RC3H2 Facilitates Cell Proliferation and Invasion by Targeting MicroRNA-101-3p/EZH2 Axis in OSCC

Kun Wu, Yingying Jiang, Wenkai Zhou, Bolin Zhang, Yan Li, Fei Xie, Jianjun Zhang, Xu Wang, Ming Yan, Qin Xu, Zhenhu Ren, Wantao Chen, and Wei Cao

Supplementary table 1. Clinical characteristic of the oral squamous cell carcinoma (OSCC) patients used for microarray assay.

NO.	Prior Radiotherapy	Age	Gender	Site	Clinical stage	TNM classification	Perineural invasion
1	No	56	Female	Gingiva	II	T2N0M0	No
2	No	54	Male	Gingiva	III	T3N0M0	No
3	No	58	Male	Tongue	III	T2N1M0	No
4	No	64	Male	Tongue	II	T2N0M0	Yes
5	No	57	Female	Tongue	IV	T4N0M0	No

TNM: tumor, node, metastasis

Supplementary table 2. Associations between RC3H2, EZH2 and miR-101-3p levels and clinical parameters in patients with OSCC (n = 34)

Group	RC3H2 expression ( $\Delta$ Ct Mean $\pm$ SD)	P value	EZH2 expression ( $\Delta$ Ct Mean $\pm$ SD)	P value	miR-101-3p expression ( $\Delta$ Ct Mean $\pm$ SD)	P value
<b>Age(y)</b>		0.3900		0.5799		0.9185
≥ 60	0.1333 $\pm$ 0.02223		4.176 $\pm$ 1.506		3.472 $\pm$ 2.099	
< 60	0.1072 $\pm$ 0.0173		3.886 $\pm$ 0.9750		3.394 $\pm$ 1.743	
<b>Gender</b>		0.7831		0.6250		0.1812
Male	0.1253 $\pm$ 0.01934		4.189 $\pm$ 1.209		3.067 $\pm$ 1.959	
Female	0.1167 $\pm$ 0.02324		3.951 $\pm$ 1.595		3.995 $\pm$ 1.936	
<b>Smoking history</b>		0.3671		0.3496		0.7055
Yes	0.1385 $\pm$ 0.02915		3.770 $\pm$ 1.369		3.260 $\pm$ 1.684	
No	0.1096 $\pm$ 0.01704		4.245 $\pm$ 1.363		3.540 $\pm$ 2.130	
<b>T stage</b>		0.1280		0.8423		0.7201
T1-T2	0.1138 $\pm$ 0.01359		4.073 $\pm$ 1.416		3.404 $\pm$ 2.028	
T3-T4	0.1829 $\pm$ 0.072		4.221 $\pm$ 1.023		3.789 $\pm$ 1.724	
<b>Lymph node status</b>		0.8412		0.7809		0.3267
pN positive	0.1245 $\pm$ 0.02071		4.039 $\pm$ 1.551		3.184 $\pm$ 2.067	
pN negative	0.1182 $\pm$ 0.01917		4.175 $\pm$ 1.042		3.878 $\pm$ 1.812	
<b>TNM stage</b>		0.6554		0.9483		0.5182
I-II	0.1101 $\pm$ 0.01904		4.112 $\pm$ 1.062		3.751 $\pm$ 1.831	
III-IV	0.1245 $\pm$ 0.02071		4.079 $\pm$ 1.526		3.284 $\pm$ 2.072	
<b>Perineural invasion</b>		0.5749		0.2179		0.2142
Yes	0.1034 $\pm$ 0.01763		4.616 $\pm$ 0.8577		4.216 $\pm$ 1.385	
No	0.1241 $\pm$ 0.01853		3.929 $\pm$ 1.460		3.213 $\pm$ 2.090	
<b>ECS</b>		0.5775		0.9643		0.0524
Yes	0.1018 $\pm$ 0.03633		4.114 $\pm$ 0.9345		4.859 $\pm$ 1.003	
No	0.1236 $\pm$ 0.01662		4.086 $\pm$ 1.452		3.147 $\pm$ 2.011	
<b>Prior Radiotherapy</b>		0.6388		0.2893		0.2659
Yes	0.09724 $\pm$ 0.03292		4.899 $\pm$ 0.9517		2.221 $\pm$ 3.641	
No	0.1219 $\pm$ 0.01621		4.013 $\pm$ 1.383		3.568 $\pm$ 1.801	

Abbreviations: SD, standard deviation; pN, lymph node-metastasis stage. ECS, extracapsular spread of metastatic lymph nodes.

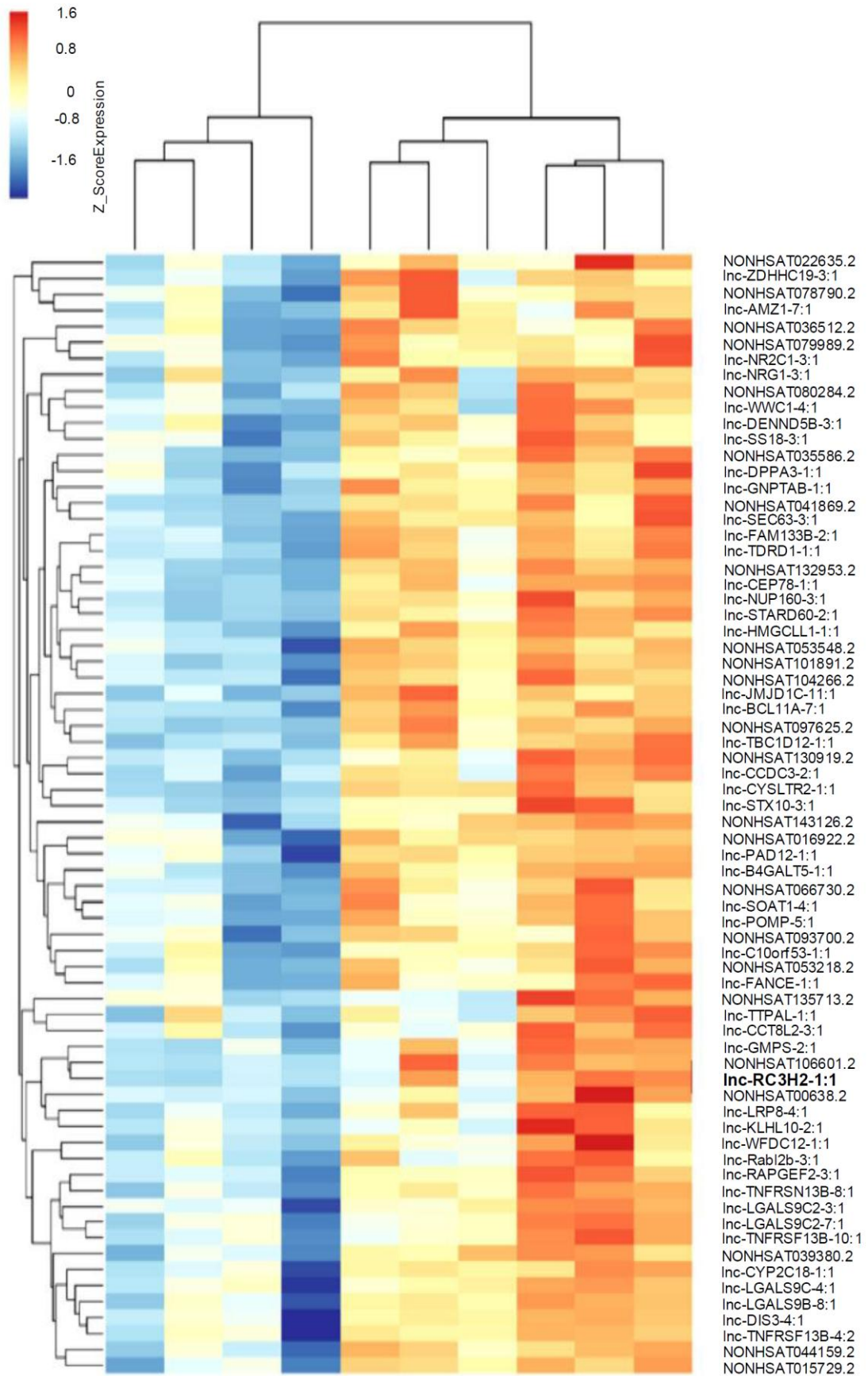
$\Delta$ Ct indicates the difference in the cycle number at which a sample's fluorescent signal passes a given threshold above baseline (Ct) derived from a specific gene compared with that of GAPDH in tumor tissues.

Supplementary table 3. Sequence of qRT-PCR

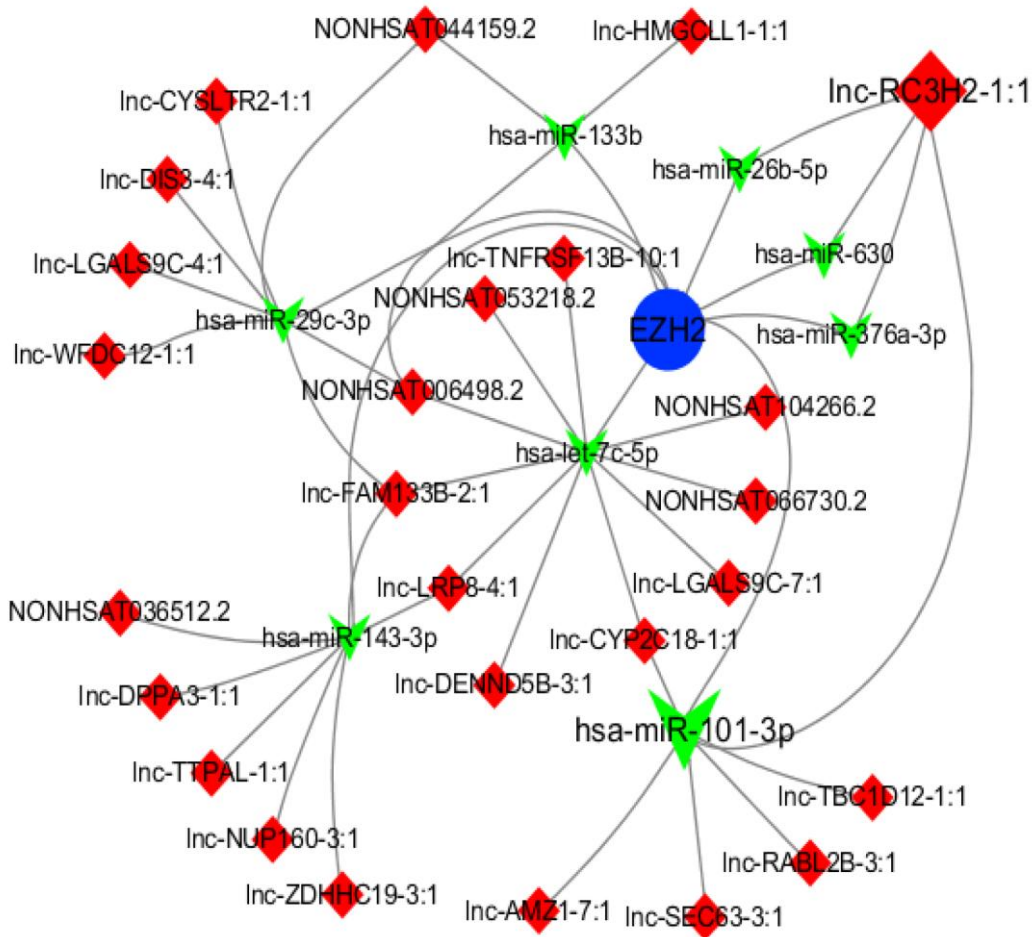
Primers	Forward	Reverse
RC3H2	CAACCGATTGTGAAGCTCTAGTG	CTTAGAGATGGTGCCTGCTTTTTA
GAPDH	GAACGGGAAGCTCACTGG	GAACGGGAAGCTCACTGG
EZH2	AATCAGAGTACATGCGACTGAGA	GCTGTATCCTTCGCTGTTTCC
U6	CTCGCTTCGGCAGCACATATACT	ATTTGCGTGTTCATCCTTGCGCA
miR-101-3	GCCGAGTACAGTACTGTGA	CTCAACTGGTGTCTGTGGA

P

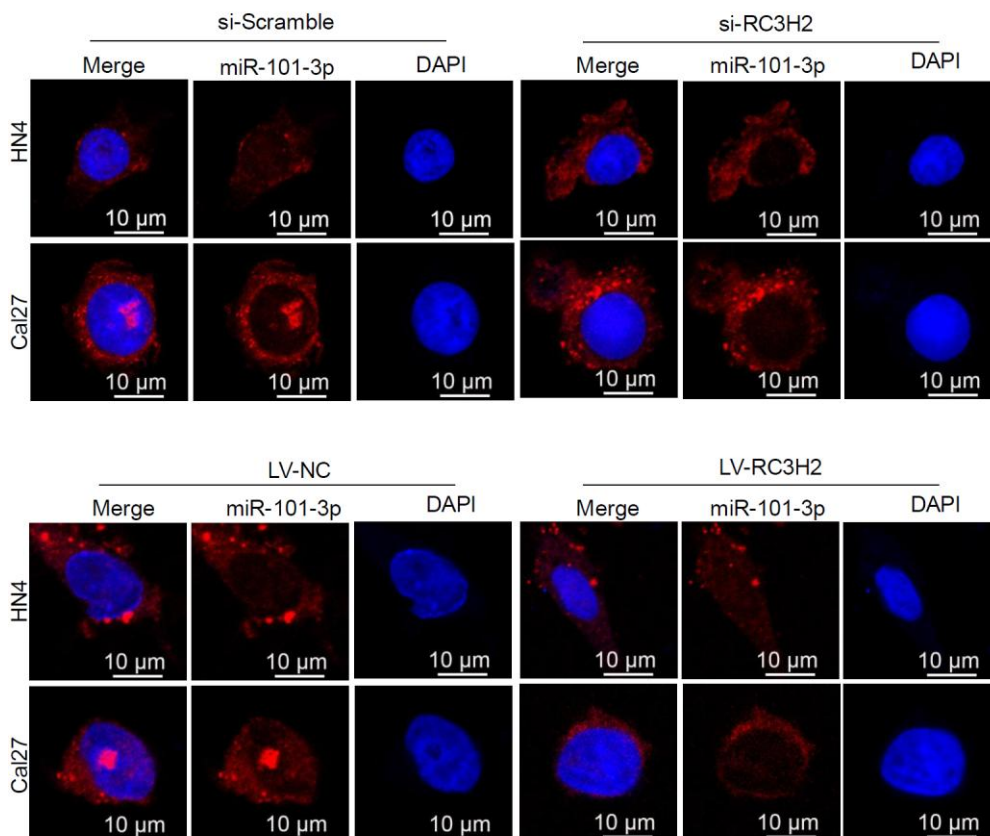
Supplementary Figure 1



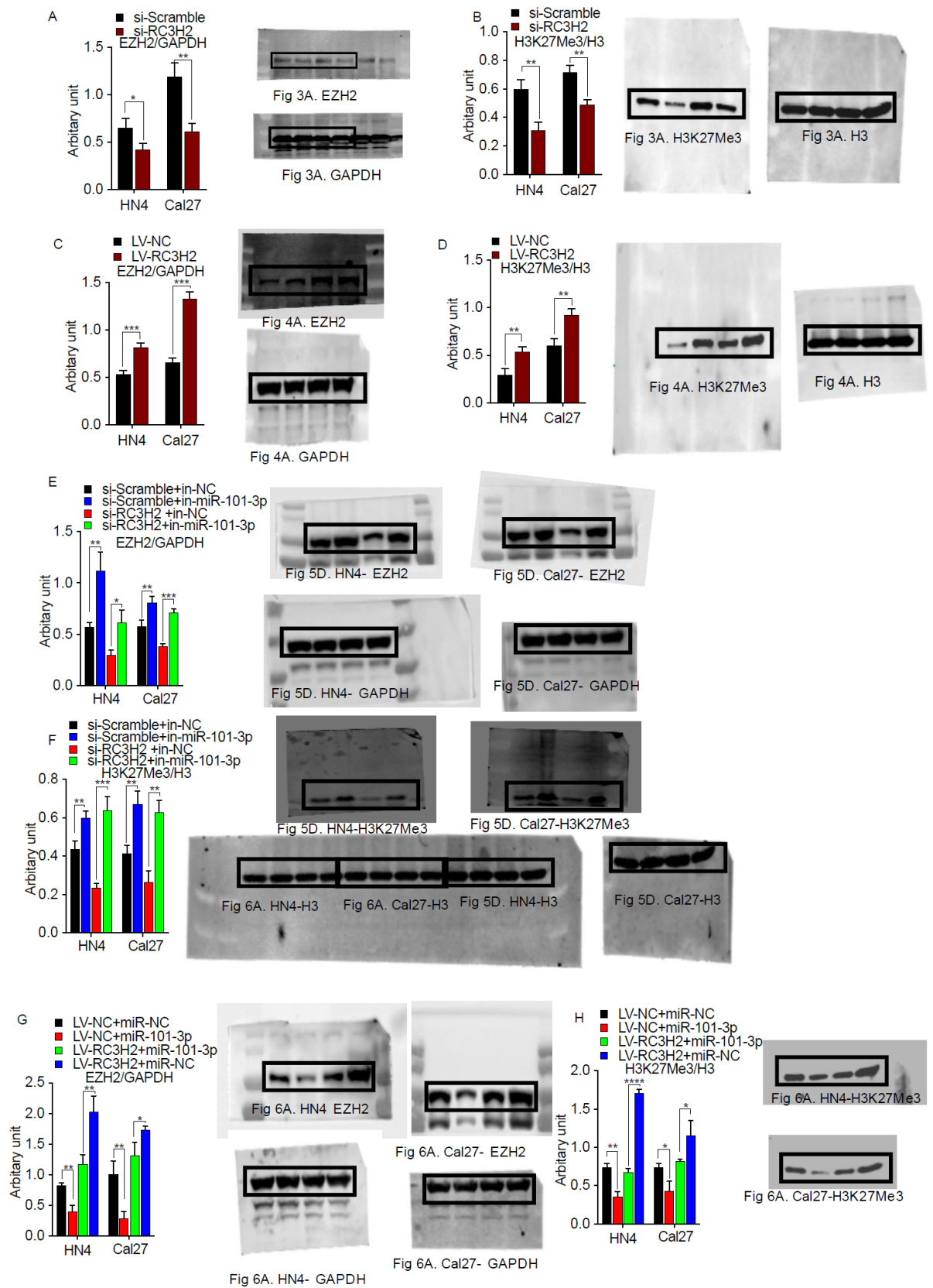
Supplementary Figure 2



Supplementary Figure 3



Supplementary Figure 4



Supplementary Figure 5

