

SUPPLEMENTAL TABLES

Supplemental Table 1. The impact of local failure on nodal or distant failure.				
Histology	Local Failure	Proportion with Nodal or Distant Failure	95% L	95% U
Overall	Yes	0.541667	0.420044	0.659754
Overall	No	0.211078	0.180717	0.244016
SqCC	Yes	0.484849	0.307963	0.664556
SqCC	No	0.181319	0.128221	0.245106
Adeno	Yes	0.611111	0.357451	0.827014
Adeno	No	0.244444	0.189775	0.305981
Unknown	Yes	0.631579	0.383578	0.837114
Unknown	No	0.166667	0.118268	0.225035
NSCLC-NOS	Yes	-	-	-
NSCLC-NOS	No	0.333333	0.214005	0.470648

Abbreviations: Adeno, adenocarcinoma; NSCLC-NOS, non-small cell carcinoma, not otherwise specified; SqCC, squamous cell carcinoma.

Supplemental Table 2. Subgroup analysis in patients receiving 100 Gy BED.				
	HR	95% L	95% U	<i>p</i>
T2 (n=103)				
Histology				
SqCC v. Adeno	10.345	1.39	77.015	0.0225*
SqCC v. NSCLC-NOS	1.281	0.168	9.756	0.8112
SqCC v. Unknown	1.109	0.3	4.103	0.8765
Adeno v. NSCLC-NOS	0.124	0.008	1.875	0.1319
Adeno v. Unknown	0.107	0.012	0.984	0.0484*
NSCLC-NOS v. Unknown	0.866	0.091	8.245	0.9005
T1 (n=231)				
Histology				
SqCC v. Adeno	1.461	0.597	3.576	0.4064
SqCC v. NSCLC-NOS	5012765	2104186	11941820	-
SqCC v. Unknown	1.476	0.609	3.577	0.3891
Adeno v. NSCLC-NOS	3430958	1518926	7749863	-
Adeno v. Unknown	1.01	0.434	2.348	0.9816
NSCLC-NOS v. Unknown	0	0	0	-

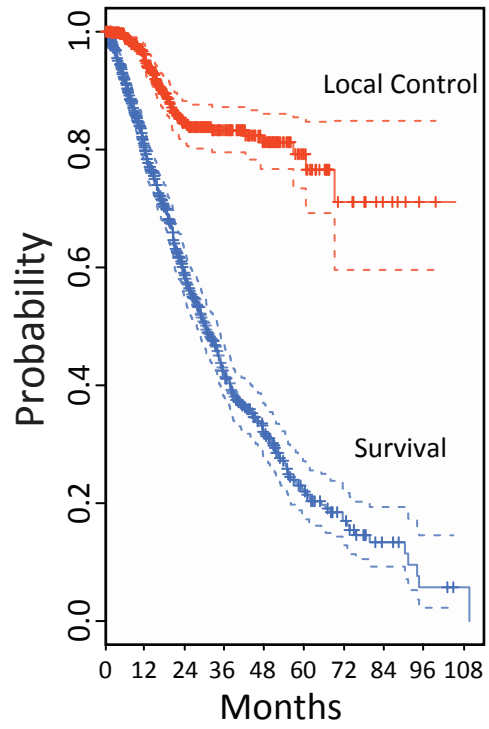
Abbreviations: Adeno, adenocarcinoma; NSCLC-NOS, non-small cell carcinoma, not otherwise specified; SqCC, squamous cell carcinoma.

**p* value of < 0.05 was considered statistically significant.

SUPPLEMENTAL FIGURE LEGENDS

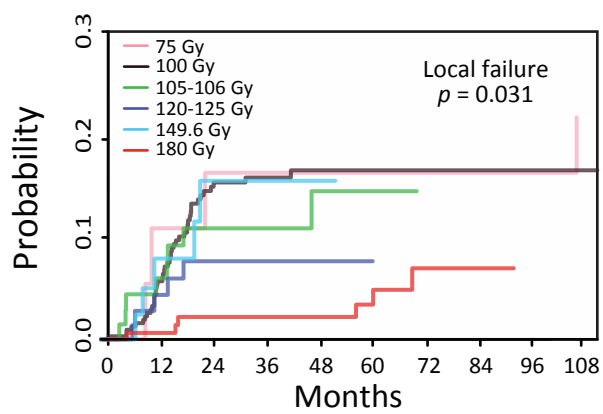
Supplemental Figure 1. Kaplan-Meier estimates of local failure and overall survival in the study population.

Supplemental Figure 2. Estimated cumulative incidence curves of local failure by dose categories in BED.



No. at Risk	
LC	740 461 262 142 80 36 18 7 3 1
OS	740 487 297 159 88 43 25 9 3 1

Supplemental Figure 2.



No. at Risk (local Failure)										
75 Gy	18	12	6	4	2	1	1	1	1	0
100 Gy	335	216	113	60	30	13	7	5	2	1
105-106 Gy	70	51	34	19	8	2	0	0	0	0
120-125 Gy	77	45	30	13	7	1	0	0	0	0
149.6 Gy	46	22	6	3	1	0	0	0	0	0
180 Gy	189	112	70	42	32	19	10	1	0	0

Supplemental Figure 3.