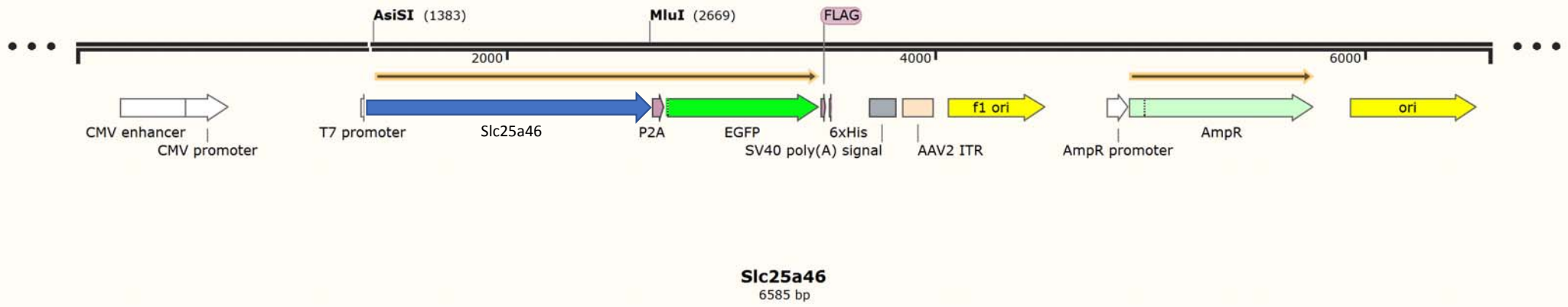
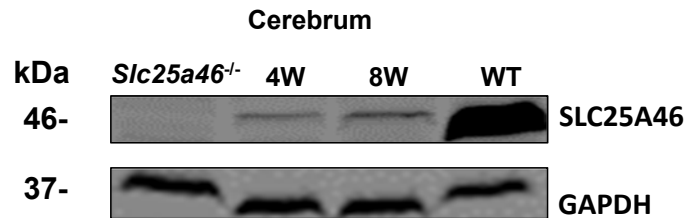


Figure S.1 Plasmid map of AAV-PHP.B-Slc25a46 vector



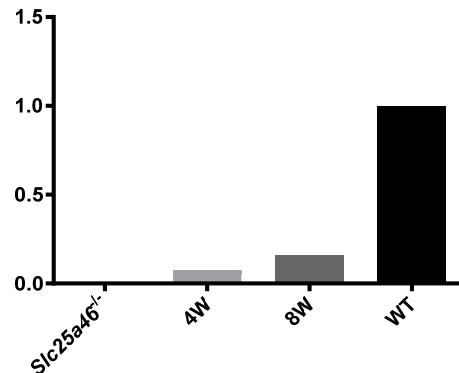
AAV-induces Slc25a46 protein expression maintains over time

A



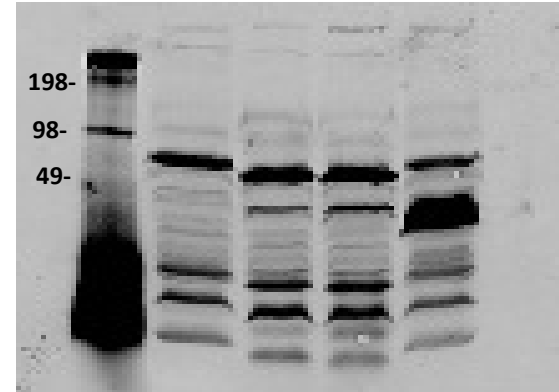
B

Relative SLC25A46 expression in Cerebrum



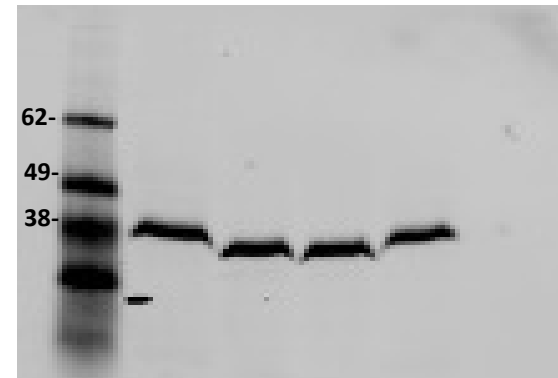
C

Whole gel image of slc25a46 (Abcam:ab237760)



D

Whole gel image of GAPDH (GeneTex:GT239)



(A) Western blot analysis in *Slc25a46* null mutants, mutants 4 weeks after AAV administration (4W), mutants 8 weeks after AAV administration (8W), and wild type mice (WT). The expression of *Slc25a46* protein in the cerebrum of AAV-treated mutants was confirmed. (B) Relative expression of *Slc25a46* protein in cerebrum. (C) Whole gel image of rabbit-anti-slac25a46 (Abcam:ab237760) incubation. (D) Whole gel image of mouse-anti-GAPDH (GeneTex:GT239) incubation after ab237760 was stripped to avoid non-specific band interference.