

Supporting Information to:

Amyloid formation of bovine insulin is retarded in moderately acidic pH and by addition of short-chain alcohols

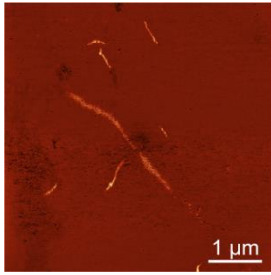
David Bernson^{1,§}, Almedina Mecinovic^{1,§}, Md Tuhin Abed¹, Fredrik Limé², Per Jageland², Magnus Palmlöf², Elin K. Esbjörner^{1,*}

¹Division of Chemical Biology, Department of Biology and Biological Engineering, Chalmers University of Technology, Kemivägen 10, 412 96 Gothenburg, Sweden

²Noyron Pulp and Performance Chemicals AB, Separation Products, SE 445 80 Bohus, Sweden

[§]shared first authors

*Corresponding author: email: eline@chalmers.se, phone: +46-31-772 5120; ORCID: 0000-0002-1253-6342



Atomic force microscopy imaging of insulin aggregated in ammonium acetate, pH 4.0 in presence of 30% (vol/vol) EtOH. The sample was diluted 100 times before deposited on the mica surface. Fibrillar species with typical amyloid morphology are present. The scale bar is 1 μm .