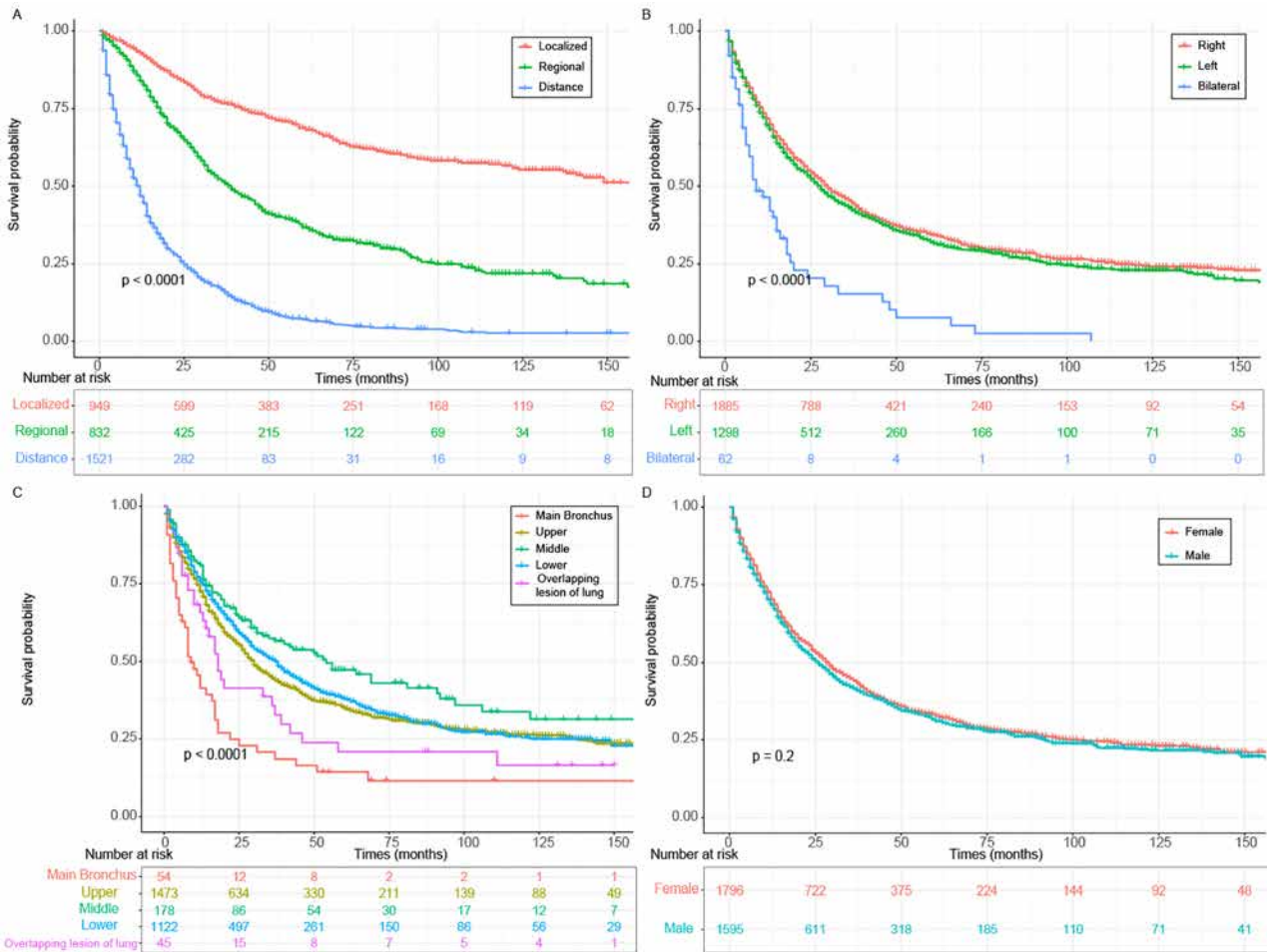
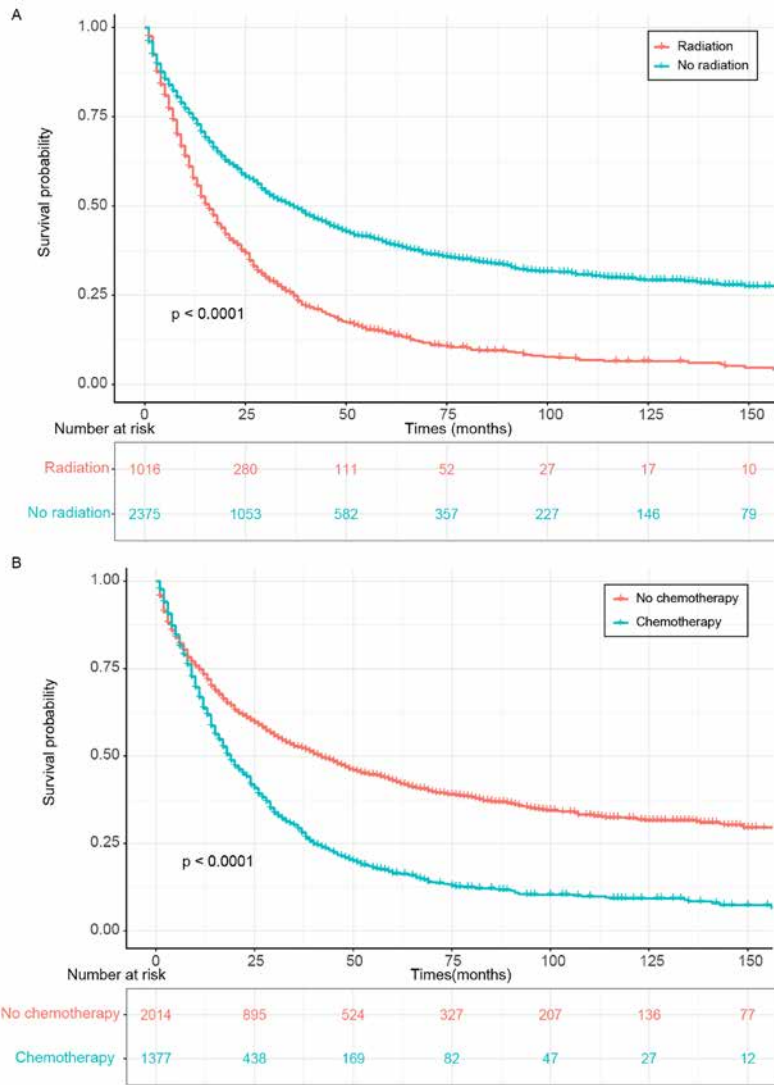


Electronic supplementary material

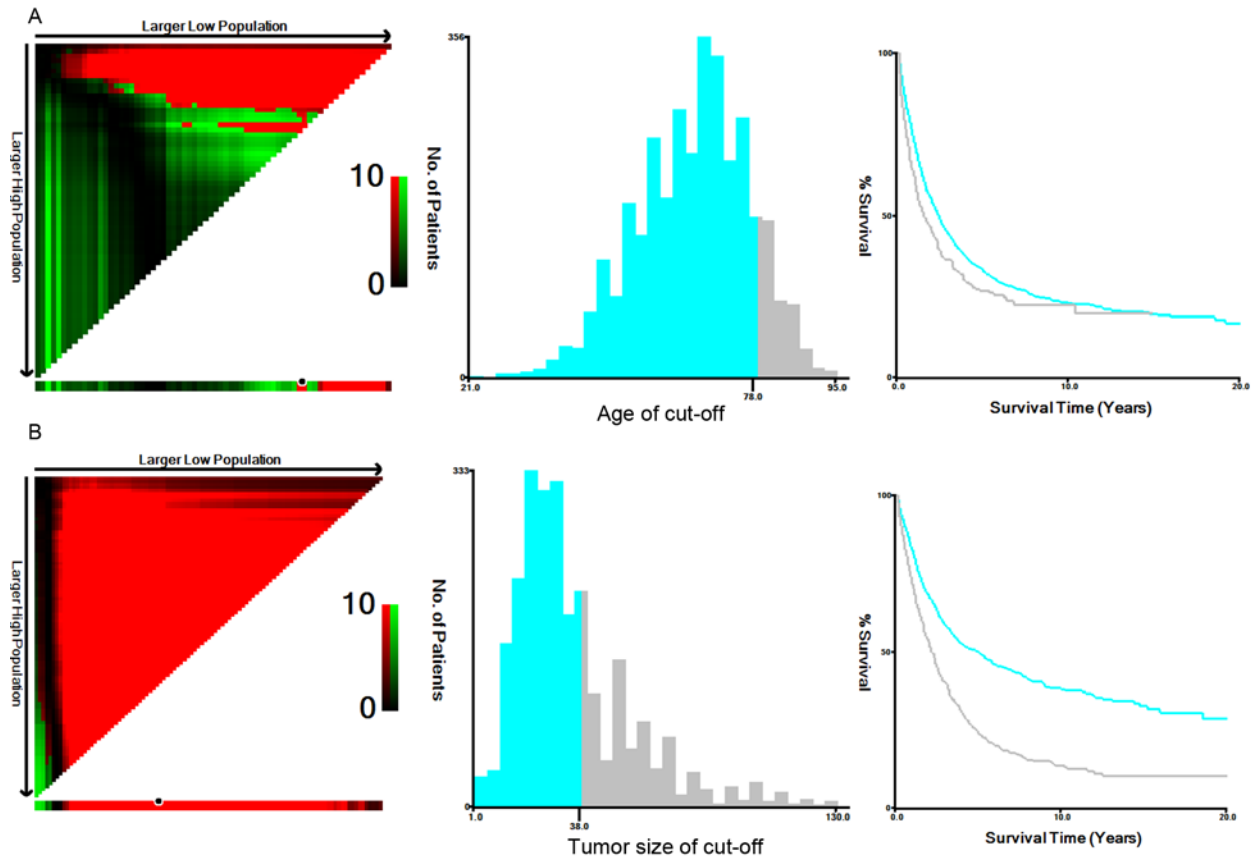


Supplementary Figure S1: OS for primary pulmonary PA patients classified by (A) SEER summary stages. (B) laterality. (C) lobe. (D) sex. Abbreviations: OS, overall survival; PA, papillary adenocarcinoma; SEER, Surveillance, Epidemiology and End Results.

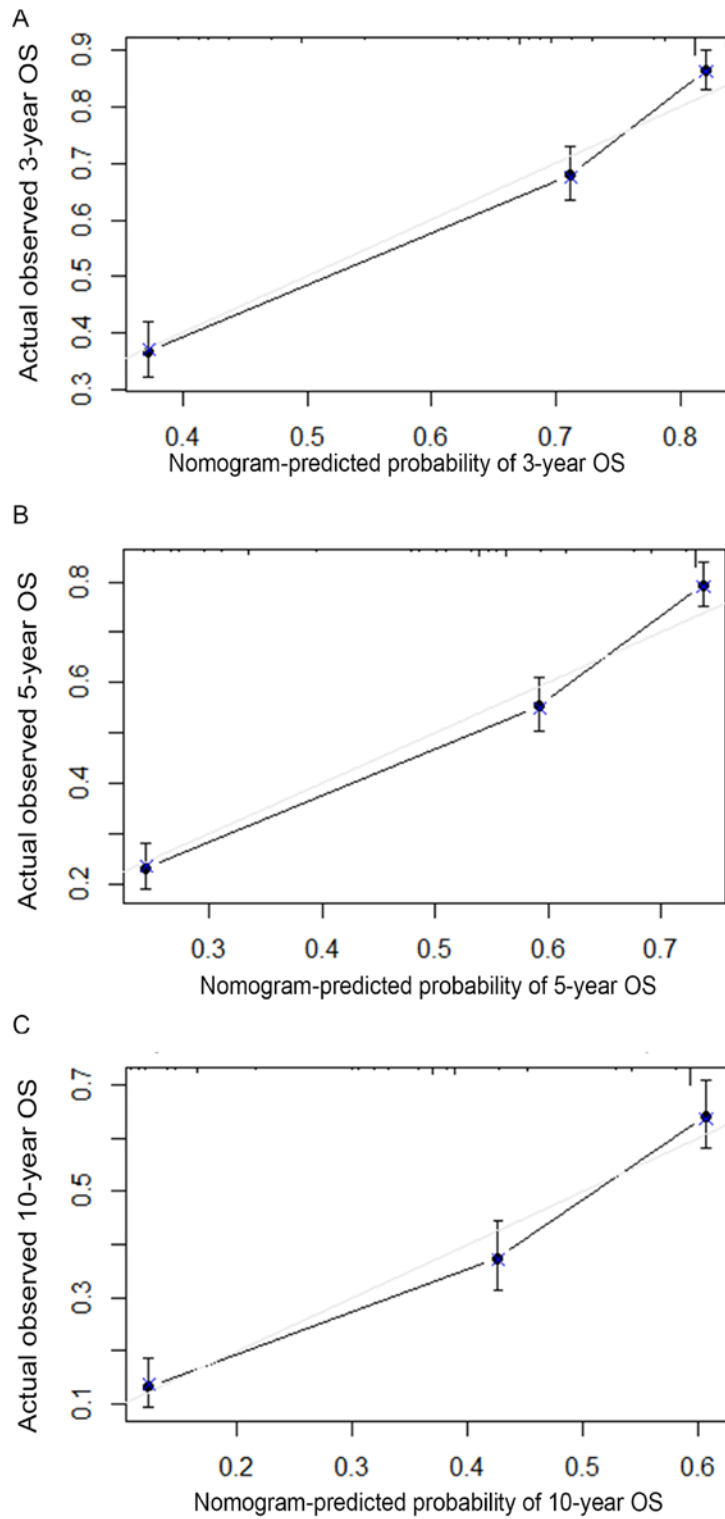


Supplementary Figure S2: OS for primary pulmonary PA patients classified by (A) radiation before PSM analysis. (B) chemotherapy before PSM analysis

Abbreviations: OS, overall survival; PA, papillary adenocarcinoma; PSM, propensity-score matching.



Supplementary Figure S3: The optimal cut-off of tumor size and age in primary pulmonary PA patients.
 Abbreviations: PA, papillary adenocarcinoma.



Supplementary Figure S4: The calibration curves to estimate primary pulmonary PA patient survival at (A) 3 years and (B) 5 years, and (C) 10 years.

Abbreviations: PA, papillary adenocarcinoma.

Supplementary Table S1: Patient characteristics by radiation before and after PSM

Variables	No Radiation	Radiation	P value	No Radiation	Radiation	P value
Total	2375	1016		817	817	
Age(Mean±SD)	66.8±11.7	63.7±11.8	<0.001	65.0±11.8	64.6±11.6	0.53
Gender			0.29			0.25
Female	1244	552		455	432	
Male	1131	464		362	385	
Race			0.13			0.65
White	1851	761		617	614	
Black	223	121		82	95	
Unknown	301	134		118	108	
Marital status			0.17			0.51
Married	1323	600		467	465	
Single	962	384		329	323	
Unknown	90	32		21	29	
Laterality			<0.001			0.39
Right	1342	543		423	441	
Left	916	382		323	305	
Bilateral	41	21		26	18	
Unknown	76	70		45	53	
Lobe			<0.001			0.59
Upper	30	24		21	147	
Middle	1004	469		350	9	
Lower	135	43		36	243	
Main bronchus	826	296		226	38	
Overlapping lesion of lung	35	10		12	363	
Unknown	345	174		172	17	
Grade			<0.001			0.13
Well; I	456	102		100	90	
Moderately; II	841	230		205	196	
Poorly; III	217	120		71	103	
Undifferentiated; IV	19	9		5	7	
Unknown	842	555		436	421	
Tumor stage			<0.001			0.01
T1	1040	316		264	245	
T2	470	276		160	43	
T3	173	96		68	71	
T4	126	47		58	219	
TX	566	281		267	239	
Node status			<0.001			0.46
N0	1285	227		190	215	
N1	213	98		101	82	

Variables	No Radiation	Radiation	P value	No Radiation	Radiation	P value
	N2 381	367		253	250	
	N3 127	114		83	80	
	NX 369	210		190	190	
Metastasis status			<0.001			<0.001
	M0 1643	398		403	30	
	M1 637	583		369	447	
	MX 95	35		45	340	
Summary stage			<0.001			0.29
	Localized 878	71		85	69	
	Regional 573	259		209	220	
	Distance 857	664		494	508	
	Unknown 67	22		29	20	
Surgery			<0.001			0.71
	No 1406	257		246	239	
	Yes 964	758		571	578	
Chemotherapy			<0.001			0.58
	No 1613	401		360	371	
	Yes 762	615		457	446	

Abbreviation: PSM: Propensity-score matching; SD, standard deviation

Supplementary Table S2: Patient characteristics by chemotherapy before and after PSM

Variables	No Chemotherapy	Chemotherapy	P value	No Chemotherapy	Chemotherapy	P value
Total	2014	1377		415	415	
Age(Mean±SD)	68.2±10.7	62.6±11.5	<0.001	65.5±11.8	65.8±11.3	0.72
Gender			0.45			0.36
Female	1056	958		216	185	
Male	740	637		199	230	
Race			0.007			0.3
White	1590	1022		307	312	
Black	196	148		59	43	
Unknown	228	207		49	60	
Marital status			<0.001			0.06
Married	1065	858		225	250	
Single	874	472		180	149	
Unknown	75	47		10	16	
Laterality			0.006			0.49
Right	1128	757		244	225	
Left	783	515		248	161	
Bilateral	25	37		6	10	
Unknown	78	68		17	19	
Lobe			<0.001			0.79
Upper	22	32		5	6	
Middle	901	572		169	167	
Lower	118	60		19	25	
Main bronchus	708	414		143	128	
Overlapping lesion of lung	21	24		8	10	
Unknown	224	275		71	79	
Grade			<0.001			0.24
Well; I	412	146		67	60	
Moderately; II	722	349		120	115	
Poorly; III	169	168		40	57	
Undifferentiated; IV	18	10		2	0	
Unknown	693	704		186	183	
Tumor stage			<0.001			0.25
T1	944	412		151	117	
T2	429	317		84	29	
T3	138	131		37	36	
T4	81	92		18	100	
TX	422	425		125	133	
Node status			<0.001			0.72
N0	1168	344		154	163	
N1	181	130		42	49	
N2	294	454		103	103	

Variables	No Chemotherapy	Chemotherapy	P value	No Chemotherapy	Chemotherapy	P value
	N3 57	184		21	20	
	NX 314	265		95	80	
Metastasis status			<0.001			0.003
	M0 1448	593		243	215	
	M1 486	734		146	187	
	MX 80	50		26	13	
Summary stage			<0.001			<0.001
	Localized 852	97		111	56	
	Regional 486	346		100	117	
	Distance 614	907		183	233	
	Unknown 62	27		21	9	
Surgery			<0.001	187	173	0.49
	No 1249	414		227	241	
	Yes 762	960				
Radiation			<0.001			0.87
	No 1613	762		292	294	
	Yes 401	615		123	121	

Abbreviation: PSM: Propensity-score matching; SD, standard deviation

Supplementary Table S3: Overall survival stratified by clinical characteristics for patients with Papillary Adenocarcinoma

Characteristics	3-year	95% CI	5-year	95% CI	10-year	95% CI
Total	0.43	(0.41-0.45)	0.32	(0.30-0.34)	0.22	(0.21-0.25)
Age						
≤78	0.44	(0.42-0.46)	0.33	(0.31-0.35)	0.23	(0.21-0.25)
>78	0.36	(0.31-0.42)	0.27	(0.22-0.33)	0.20	(0.14-0.28)
Gender						
Female	0.44	(0.42-0.47)	0.33	(0.3-0.35)	0.23	(0.21-0.26)
Male	0.42	(0.39-0.44)	0.31	(0.28-0.34)	0.17	(0.14-0.22)
Race						
White	0.43	(0.41-0.45)	0.32	(0.3-0.34)	0.23	(0.21-0.25)
Black	0.37	(0.31-0.43)	0.30	(0.25-0.37)	0.20	(0.15-0.28)
Other	0.45	(0.4-0.5)	0.34	(0.29-0.4)	0.21	(0.16-0.28)
Marital status						
Married	0.43	(0.41-0.46)	0.32	(0.29-0.34)	0.22	(0.2-0.25)
Single	0.42	(0.39-0.45)	0.32	(0.29-0.35)	0.22	(0.19-0.26)
Laterality						
Right	0.45	(0.43-0.48)	0.34	(0.32-0.37)	0.25	(0.22-0.28)
Left	0.43	(0.4-0.46)	0.32	(0.29-0.35)	0.23	(0.2-0.26)
Bilateral	0.15	(0.08-0.31)	0.05	(0.01-0.19)	/	
Lobe						
Main bronchus	0.19	(0.1-0.33)	0.15	(0.07-0.29)	0.12	(0.05-0.26)
Upper	0.45	(0.42-0.47)	0.35	(0.32-0.38)	0.26	(0.23-0.29)
Middle	0.58	(0.5-0.66)	0.47	(0.39-0.57)	0.31	(0.22-0.44)
Lower	0.51	(0.48-0.54)	0.38	(0.35-0.42)	0.25	(0.22-0.29)
Overlapping lesion of lung	0.36	(0.23-0.55)	0.21	(0.11-0.4)	0.17	(0.08-0.36)
Grade						
Well; I	0.64	(0.6-0.69)	0.53	(0.48-0.58)	0.35	(0.3-0.42)
Moderately; II	0.57	(0.54-0.6)	0.45	(0.41-0.49)	0.33	(0.29-0.37)
Poorly; III	0.38	(0.32-0.44)	0.26	(0.21-0.32)	0.19	(0.14-0.25)
Undifferentiated; IV	0.41	(0.25-0.66)	0.36	(0.21-0.62)	0.30	(0.16-0.57)
Tumor stage						
T1	0.60	(0.57-0.63)	0.51	(0.48-0.54)	0.41	(0.37-0.44)
T2	0.46	(0.43-0.51)	0.33	(0.29-0.37)	0.20	(0.16-0.25)
T3	0.36	(0.3-0.43)	0.23	(0.18-0.3)	0.12	(0.07-0.2)
T4	0.36	(0.29-0.45)	0.18	(0.13-0.27)	0.08	(0.04-0.16)
Tumor size						
≤ 38 mm	0.58	(0.55-0.61)	0.49	(0.47-0.53)	0.38	(0.35-0.42)
> 38 mm	0.39	(0.36-0.43)	0.24	(0.20-0.27)	0.13	(0.10-0.17)
Node status						
N0	0.65	(0.63-0.68)	0.56	(0.53-0.59)	0.44	(0.4-0.48)
N1-3	0.29	(0.27-0.32)	0.17	(0.15-0.2)	0.09	(0.07-0.12)

Characteristics	3-year	95% CI	5-year	95% CI	10-year	95% CI
Metastasis status						
M0	0.58	(0.56-0.61)	0.48	(0.45-0.5)	0.35	(0.33-0.38)
M1	0.17	(0.15-0.2)	0.07	(0.05-0.09)	0.02	(0.01-0.04)
Summary stage						
Localized	0.77	(0.74-0.8)	0.69	(0.65-0.72)	0.57	(0.52-0.61)
Regional	0.52	(0.48-0.56)	0.37	(0.33-0.41)	0.22	(0.18-0.27)
Distance	0.17	(0.15-0.19)	0.07	(0.06-0.09)	0.03	(0.02-0.04)
TNM						
I	0.82	(0.8-0.85)	0.74	(0.71-0.78)	0.60	(0.55-0.65)
II	0.62	(0.57-0.68)	0.47	(0.41-0.54)	0.30	(0.24-0.38)
III	0.37	(0.32-0.43)	0.24	(0.2-0.29)	0.15	(0.11-0.21)
IV	0.17	(0.15-0.2)	0.07	(0.05-0.09)	0.02	(0.01-0.04)
Surgery						
Yes	0.69	(0.66-0.71)	0.57	(0.54-0.6)	0.41	(0.38-0.45)
No	0.17	(0.15-0.19)	0.07	(0.06-0.09)	0.04	(0.03-0.05)
Radiation						
No	0.50	(0.48-0.53)	0.40	(0.37-0.42)	0.30	(0.27-0.32)
Yes	0.26	(0.23-0.29)	0.14	(0.12-0.17)	0.07	(0.05-0.09)
Chemotherapy						
No	0.53	(0.5-0.55)	0.43	(0.4-0.46)	0.32	(0.3-0.35)
Yes	0.29	(0.27-0.32)	0.16	(0.14-0.19)	0.09	(0.07-0.12)

Abbreviation: 95% CI, 95% Confidence interval

Supplementary Table S4: Characteristics of patient with Papillary Adenocarcinoma and matched Common-Adenocarcinoma

Characteristics	Papillary Adenocarcinoma	Common-Adenocarcinoma	P-values
Total	3236	3236	
Age(Mean±SD)	66.4±11.3	66.5±11.2	0.93
Gender			0.78
	Female 1720	1709	
	Male 1516	1527	
Race			0.56
	White 2533	2531	
	Black 326	304	
	Unknown 377	401	
Marital status			0.41
	Married 1813	1780	
	Single 1302	1316	
	Unknown 121	140	
Lobe			0.63
	Main bronchus 1442	1414	
	Upper 155	161	
	Middle 987	1042	
	Lower 57	48	
	Overlapping lesion of lung 37	31	
	Unknown 558	540	
Grade			0.54
	Well; I 423	380	
	Moderately; II 975	1006	
	Poorly; III 364	371	
	Undifferentiated; IV 26	23	
	Unknown 1451	1456	
Tumor stage			0.72
	T1 1275	1238	
	T2 666	690	
	T3 246	261	
	T4 152	165	
	TX 897	882	
Node status			0.83
	N0 1384	1360	
	N1-3 1259	1279	
	NX 593	597	
Metastasis status			0.97
	M0 1828	1827	
	M1 1269	1274	
	MX 139	135	

Characteristics	Papillary Adenocarcinoma	Common-Adenocarcinoma	P-values
Surgery			0.77
	No 1362	1369	
	Yes 1866	1856	
	Unknown 8	11	
Radiation			0.23
	No 2277	2233	
	Yes 959	1003	
Chemotherapy			0.41
	No 1992	1959	
	Yes 1244	1277	

Abbreviation: SD, standard deviation