

Supplementary information

Revisiting the Radiosynthesis of [¹⁸F]FPEB and Preliminary PET Imaging in a Mouse Model of Alzheimer's Disease

Cassis Varlow ^{1,2}, Emily Murrell ¹, Jason P. Holland ^{3,4}, Alina Kassenbrock ³, Whitney Shannon ^{1,5}, Steven H. Liang ³, Neil Vasdev ^{1,3,6,*} and Nickeisha A. Stephenson ^{1,3,7,*}

¹ Azrieli Centre for Neuro-Radiochemistry, Brain Health Imaging Centre, Centre for Addiction and Mental Health, Toronto, M5T 1R8 ON, Canada; cassis.varlow@mail.utoronto.ca (C.V.); emily.murrell@camhpet.ca (E.M.); wes728@mail.usask.ca (W.S.)

² Institute of Medical Science, University of Toronto, Toronto, M5S1A8 ON, Canada

³ Division of Nuclear Medicine and Molecular Imaging, Massachusetts General Hospital & Department of Radiology, Harvard Medical School, MA 02114 Boston, MA, USA. jason.holland@chem.uzh.ch (J.P.H.); alinakassenbrock@gmail.com (A. K.); Liang.Steven@mgh.harvard.edu (S.V.L.)

⁴ Department of Chemistry, University of Zurich, 8057 Zurich, Switzerland

⁵ Department of Chemistry, University of Saskatchewan, Saskatoon S7N 0X2, SK, Canada

⁶ Department of Psychiatry, University of Toronto, Toronto M5T-1R8, ON, Canada

⁷ Department of Chemistry, The University of West Indies at Mona, Kingston, Jamaica

*Correspondence: neil.vasdev@utoronto.ca (N.V.); nickeisha.stephenson@uwimona.edu.jm (N.A.S.); Tel.: 416-535-8501 ext. 30988 (N.V.); 1-876-927-1910 (N.A.S)

FXN HPLC Traces

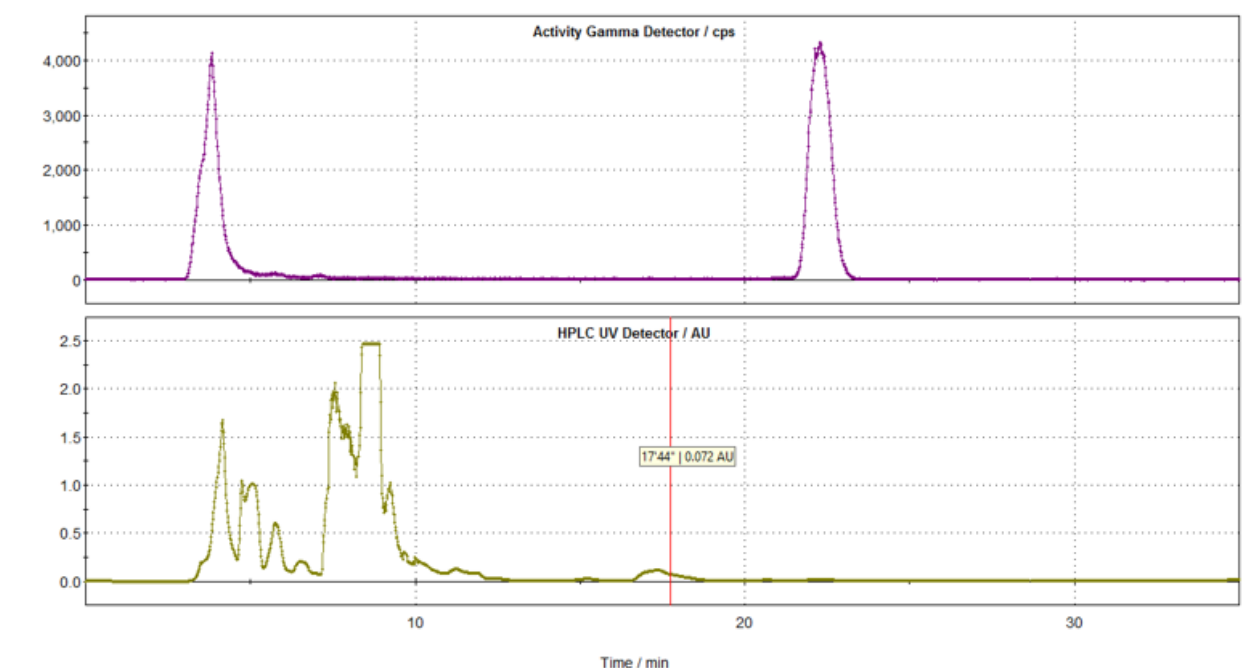


Figure S1. Semipreparative HPLC trace of a typical radiosynthesis of $[^{18}\text{F}]$ FPPEB using precursor (5).

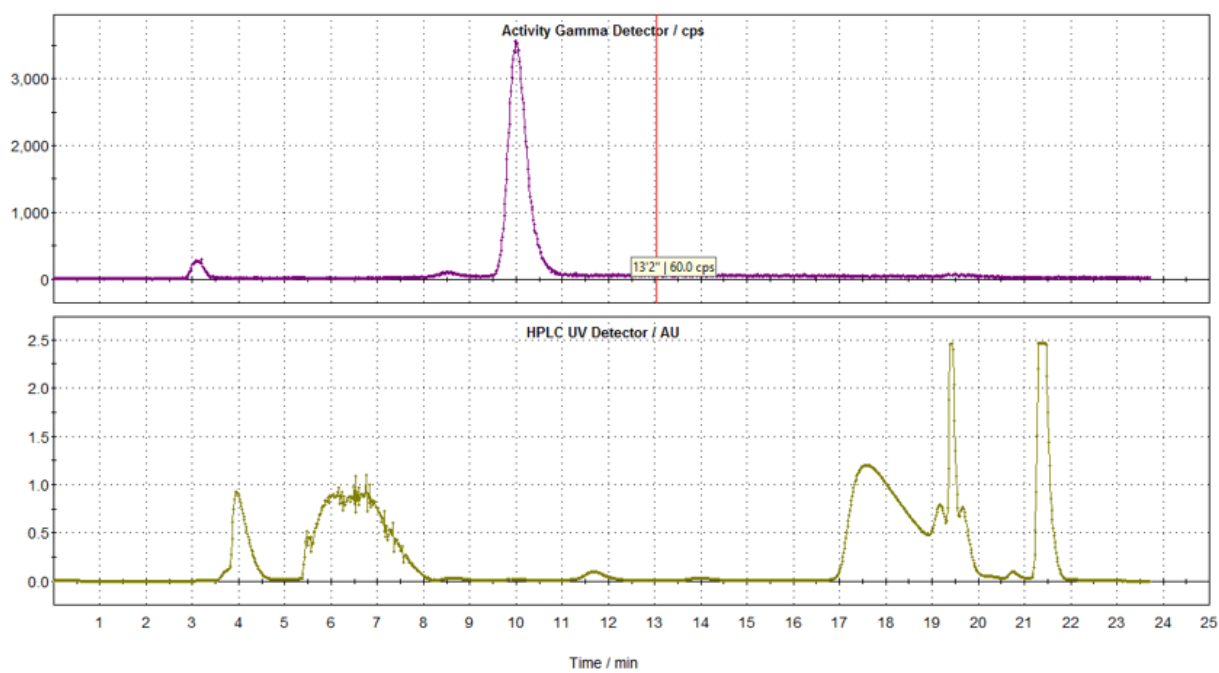


Figure S2. Semipreparative HPLC trace of a typical radiosynthesis of $[^{18}\text{F}]$ FPPEB using precursor (6).

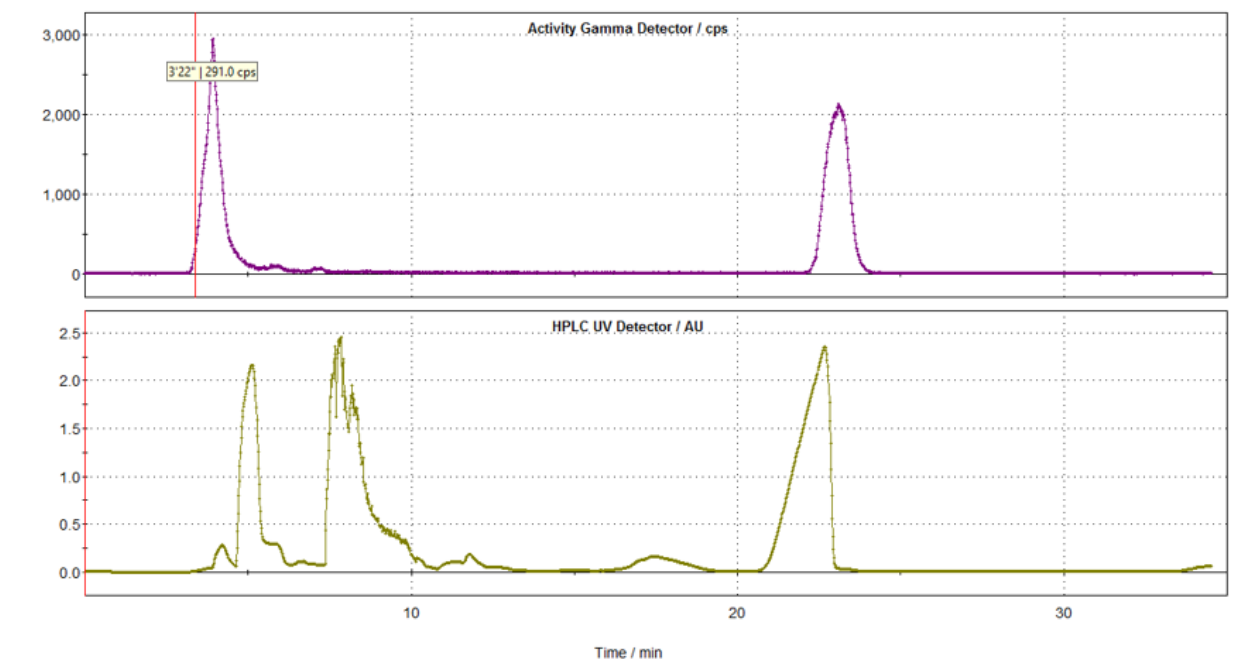


Figure S3. Semipreparative HPLC trace of a typical radiosynthesis of [^{18}F]FPEB using precursor (7).