

Communication

Mesothelial-to-Mesenchymal Transition Contributes to the Generation of Carcinoma-Associated Fibroblasts in Locally Advanced Primary Colorectal Carcinomas

Carlos H. Gordillo ^{1,†}, Pilar Sandoval ^{2,†}, Patricia Muñoz-Hernández ¹, Lucía Pascual-Antón ², Manuel López-Cabrera ^{2,*} and José A. Jiménez-Heffernan ^{1,*}

Supplementary Material

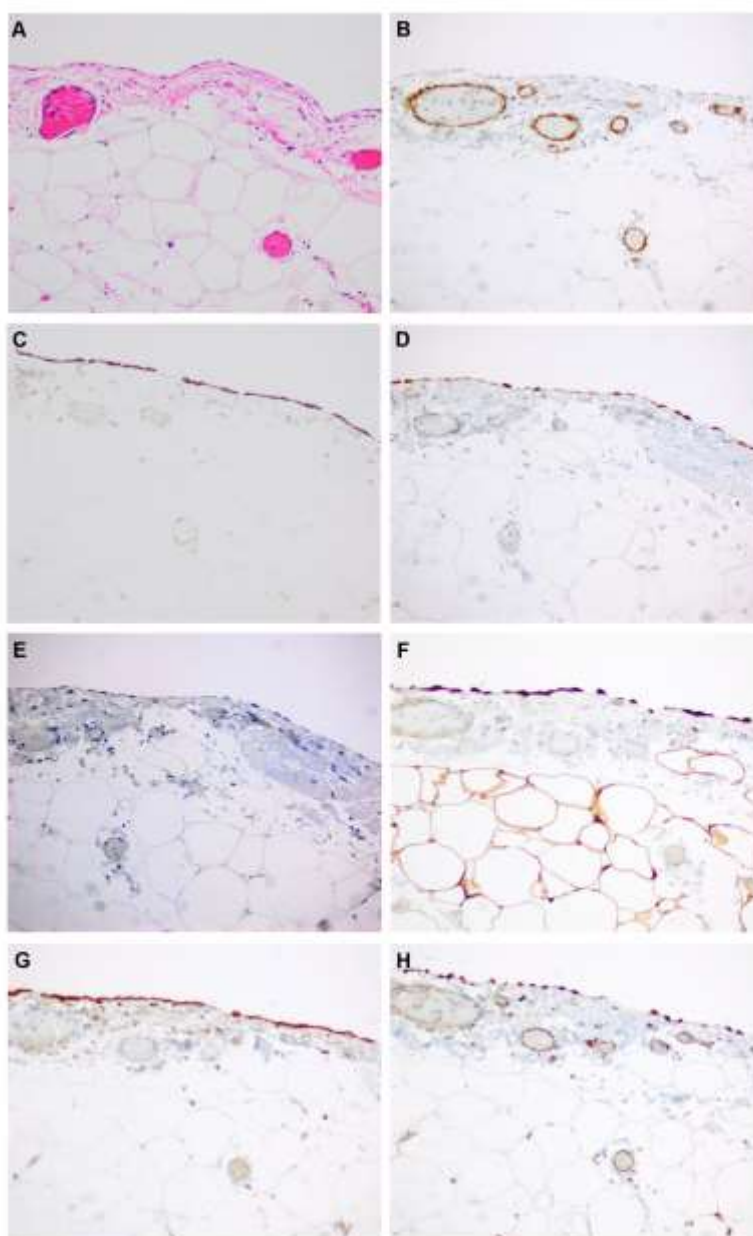


Figure 1. Control visceral peritoneum.