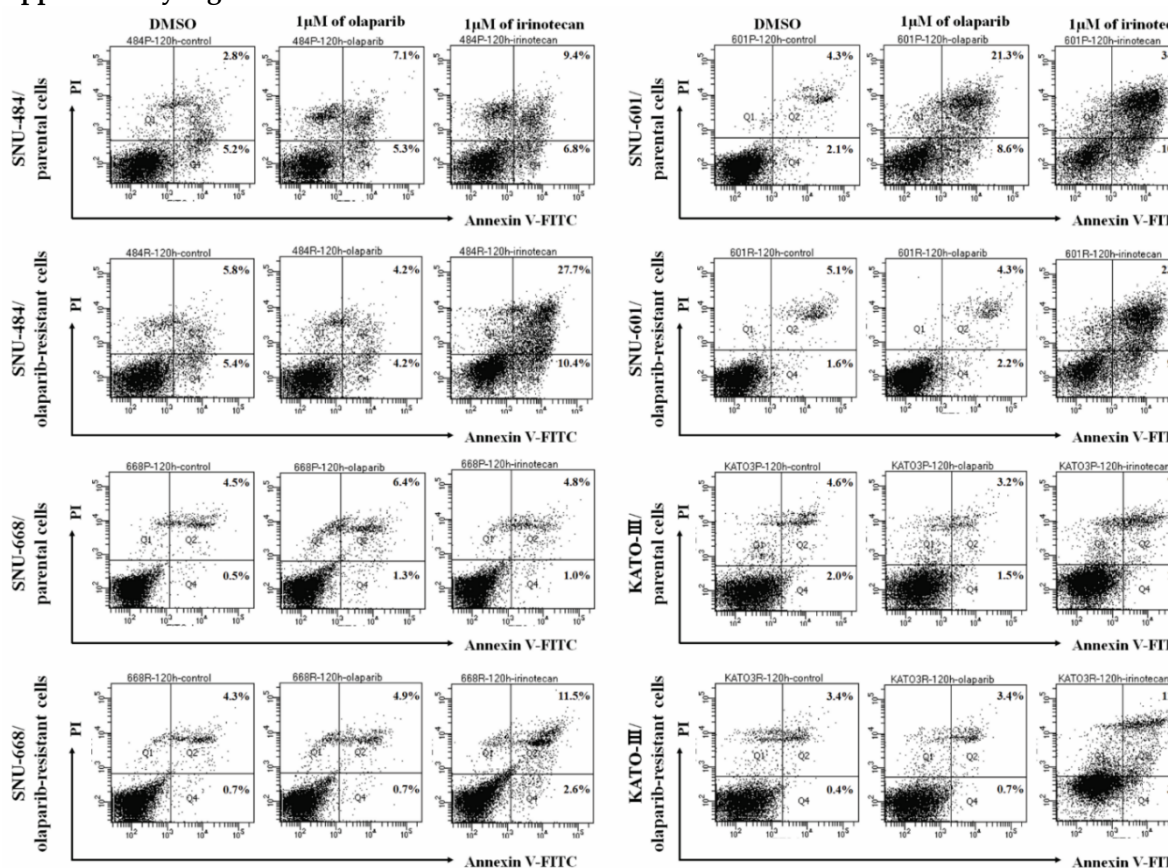


TDP1 and TOP1 Modulation in Olaparib-Resistant Cancer Determines the Efficacy of Subsequent Chemotherapy

Jin Won Kim, Ahrum Min, Seock-Ah Im, Hyemin Jang, Yu Jin Kim, Hee-Jun Kim, Kyung-Hun Lee, Tae-Yong Kim, Keun Wook Lee, Do-Youn Oh, Jee-Hyun Kim and Yung-Jue Bang

Supplementary Figure S1



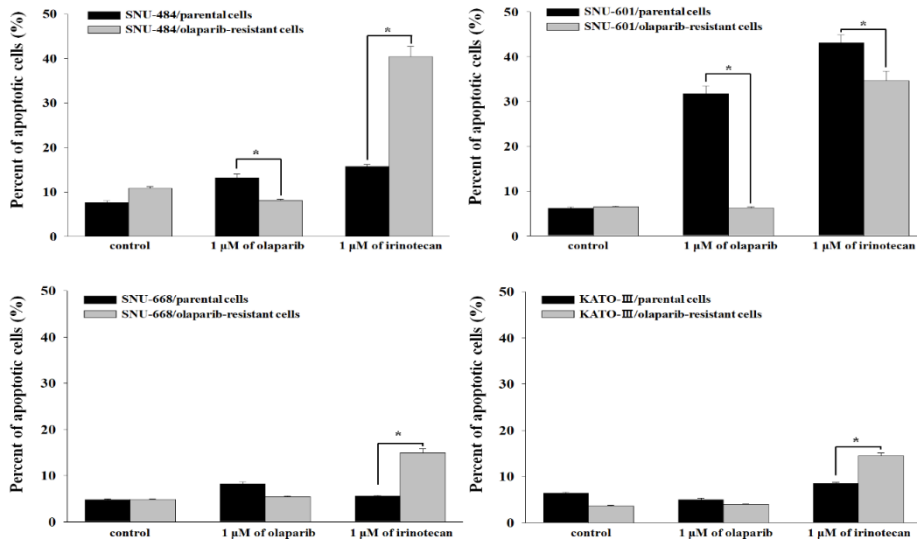
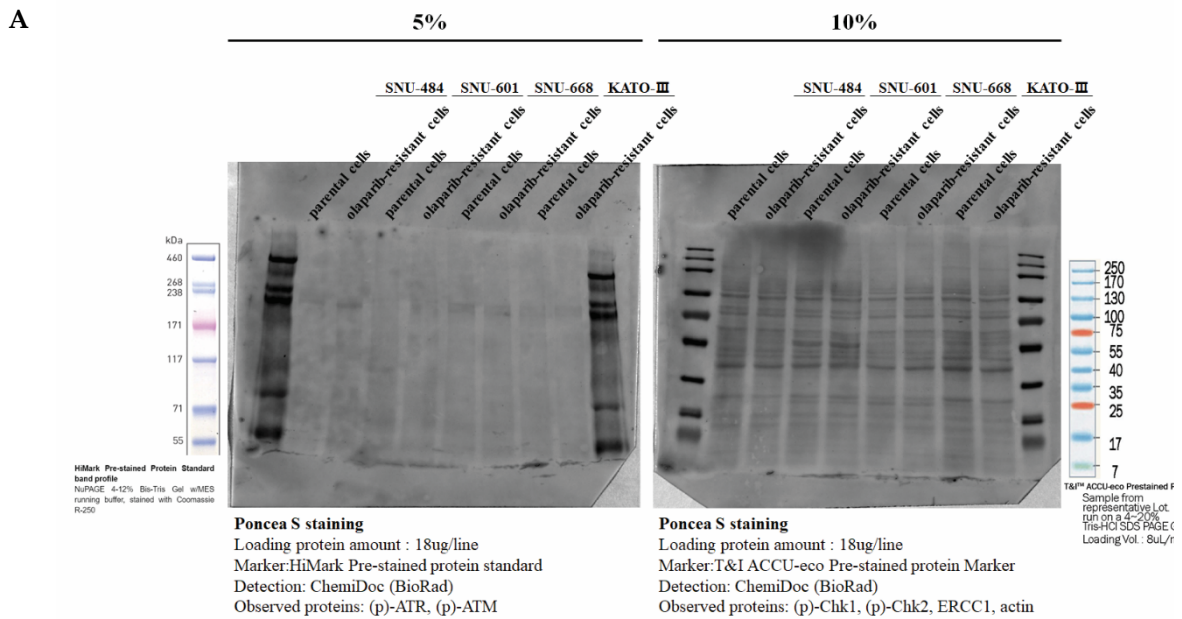


Figure S1. The populations of apoptotic cells following irinotecan or olaparib treatment. The percent of apoptotic cells were analyzed by performing Annexin V assay. The population of Annexin and PI dual positive cells were calculated and presented in a bar graph with SEs (n = 3), * p < 0.005.

Supplementary Figure S2



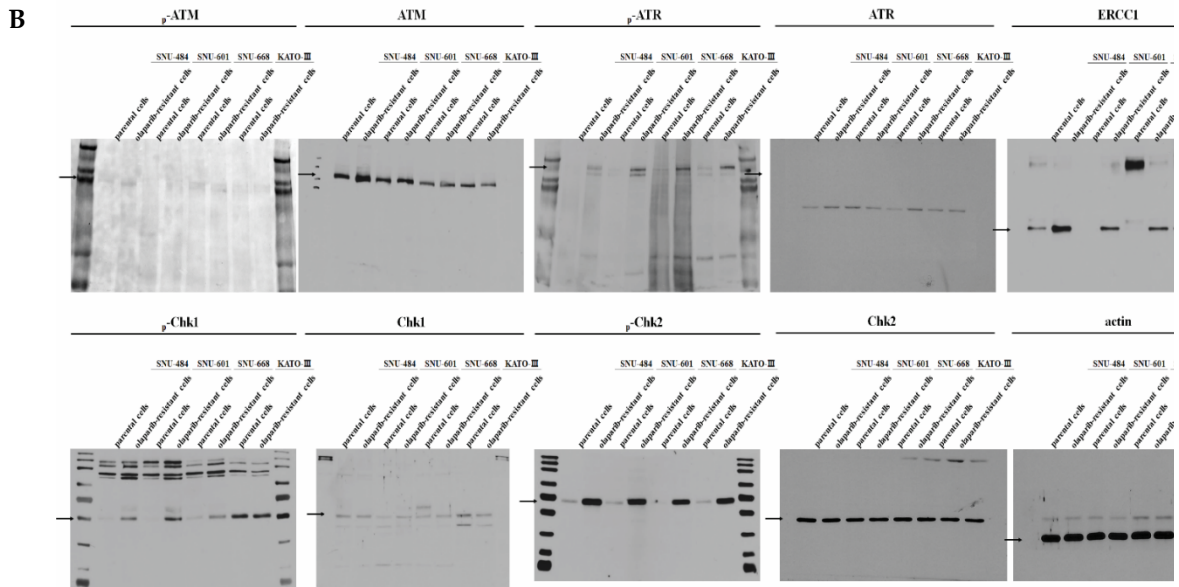


Figure S2. Protein expression levels of parental and olaparib-resistant cells. (A) Whole protein staining with Ponceau S reveals different expression levels of DDR molecules in parental and olaparib-resistant gastric cancer cells. (B) The basal expression levels of DDR proteins were detected in uncropped blots.

Supplementary Table S1. Sequences of the siRNAs.

gene	target sequence (5' → 3')
non-specific	5'-AATTCTCCGAACGTGTCACG-3' 5'-GGGAAGGACTCCATCAGATACTATA-3'
TOP1	5'-AAGTGGAATGGTGGGAAGAA-3' 5'-CGAAGAAGGTAGTAGAGTC-3'
TDP1	5'-GACCATATCTAGTAGTGAT-3' 5'-GGAGTTAAGCCAAAGTATA-3' 5'-CTAGACAGTTTCAAAGTG-3'