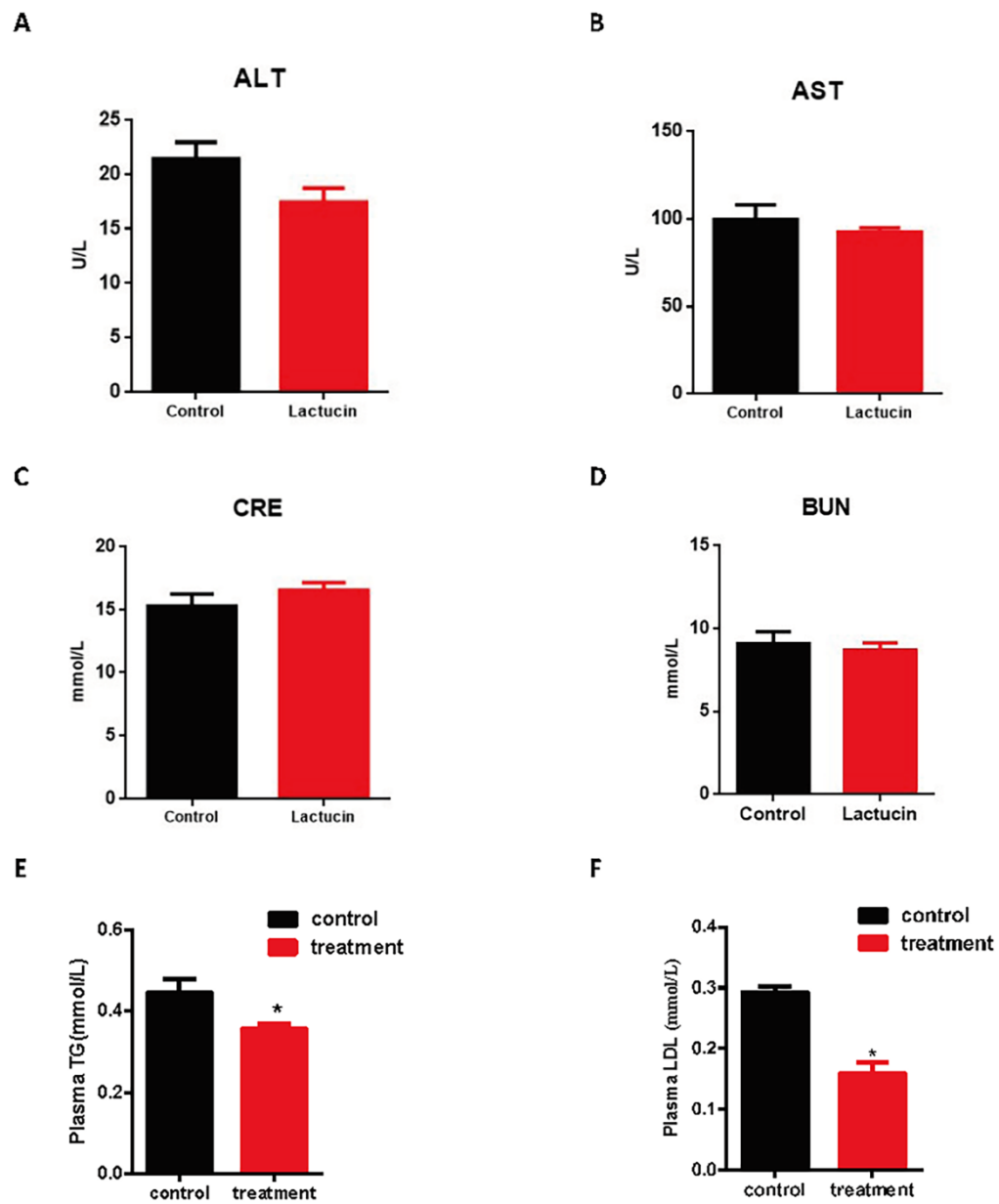


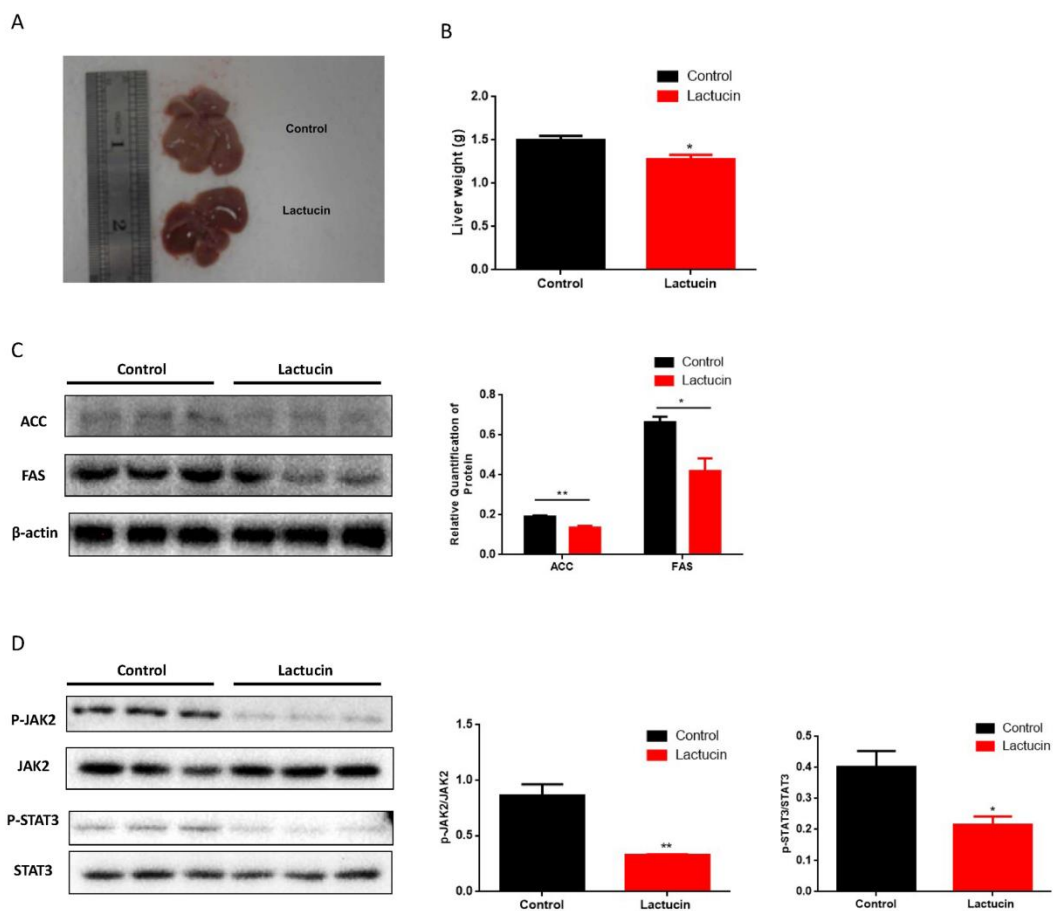
1 Supplemental Figure 1



2
3
4
5
6
7
8

Supplemental Figure 1. (A-B) Levels of plasma alanine aminotransferase (ALT) and aspartate aminotransferase (AST) (n=6). (C-D) Levels of plasma urea nitrogen (BUN) and creatinine (CREA) (n=6). (E-F) Levels of plasma TG and LDL. Values are mean \pm S.E.M. * $p < 0.05$, ** $p < 0.01$, *** $p < 0.001$.

9 Supplemental Figure 2



10
 11 Supplemental Figure 2. (A) Morphology of the liver. (B) The weight of liver (n=7). (C) The
 12 immunoblot analysis of ACC and FAS in liver (n=3). (D) The immunoblot analysis of JAK2/STAT3
 13 signaling pathway in adipose tissue of mice treated with vehicle or lactucin (n=3). Values are mean
 14 ± S.E.M. * p < 0.05, ** p < 0.01, *** p < 0.001.

15

16

17 Supplemental Tables

18 Supplemental Table 1. Primers used in real-time quantitative PCR.

Target gene	Forward (5'-3')	Reverse (5'-3')
<i>β-Actin</i>	GTCCCTGACCCTCCCAAAG	GCTGCCTCAACACCTCAACCC
<i>CCAAT Enhancer Binding Protein β (C/EBP β)</i>	AAGCTGAGCGACGAGTACAAGA	GTCAGCTCCAGCACCTTGTG
<i>Peroxisome proliferator activated receptor γ (PPAR γ)</i>	CCAAGAATACCAAAGTGCGATCA	CCCACAGACTCGGCACTCAAT
<i>CCAAT Enhancer Binding Protein α (C/EBP α)</i>	TGGACAAGAACAGCAACGAG	TCACTGGTCAACTCCAGCAC
<i>Diacylglycerol O-Acyltransferase 1 (DGAT 1)</i>	CCGTGTTTGCTCTGGCATC	TGACCTTCTTCCCTGTAGAG
<i>Diacylglycerol O-Acyltransferase 2 (DGAT 2)</i>	CCTTCCTGGTGCTAGGAGTG	CCAGTCAAATGCCAGCCA
<i>adipocyte protein 2 (aP2)</i>	AAGAAGTGGGAGTGGGCTTTG	CTCTTCACCTTCCTGTCGTCTG
<i>Glucose transporter 4 (Glut4)</i>	CTGATTCTGCTGCCCTTCTGTCCT	GACATTGGACGCTCTCTCTCCAACTT
<i>CD36 Molecule (Cd36)</i>	CCTTAAAGGAATCCCCGTGT	TGCATTTGCCAATGTCTAGC
<i>p27</i>	GGGCTCGTCTTTTCGGGGTGTTT	GAGCGGGAGGGCGGAGAGGAG
<i>p21</i>	AGTGTGCCGTTGTCTCTTCG	ACACCAGAGTGCAAGACAGC
<i>Cyclin-dependent kinase 2 (CDK 2)</i>	AGGCATGAGGAATCTGGGAG	GAGGTGGACGTCAGAGGAAA

19

20

21 **Supplemental Table 2.** Anti-body used in western-blot and immunofluorescence.

Antibody	From	Dilution (WB/IF)
β -Actin	Cell signaling Technology (4970S)	1:5000
CCAAT Enhancer Binding Protein β (C/EBP β)	Santa Cruz Biotechnology (sc-7962)	1:1000/1:250
CCAAT Enhancer Binding Protein α (C/EBP α)	Santa Cruz Biotechnology (sc-365318)	1:1000
CD36 Molecule (Cd36)	Cell signaling Technology (14347S)	1:1000
Peroxisome proliferator-activated receptor gamma coactivator 1-alpha (PGC1 α)	Cell signaling Technology (2179S)	1:1000
Peroxisome proliferator activated receptor γ (PPAR γ)	Cell signaling Technology (2430S)	1:2000
Fatty acid binding protein 4 (FABP4)	Cell signaling Technology (2120S)	1:1000
Acetyl-CoA carboxylase (ACC)	Cell signaling Technology (3662)	1:1000
Fatty acid synthase (FAS)	Cell signaling Technology (3180)	1:1000
Cyclin-dependent kinase 2 (CDK 2)	Santa Cruz Biotechnology (sc-6268)	1:1000
p27	Santa Cruz Biotechnology (sc-1641)	1:1000
p21	Santa Cruz Biotechnology (sc-6246)	1:1000
Glucose transporter 4 (Glut4)	Abcam (ab654)	1:2000/1:250
Janus kinase 2 (JAK 2)	Wanleibio (WL02188)	1:500

Phospho JAK 2 (Tyr1007/1008)	Wanleibio (WL02997)	1:500
Signal transducer and activator of transcription 3 (STAT3)	Wanleibio (WL01836)	1:500
Phospho-Stat3 (Tyr705)	Wanleibio (WLP2412)	1:500
Goat anti-rabbit (FITC)	Abbkine A23420	1:1000
Goat anti-mouse (FITC)	Abbkine A23210	1:1000
