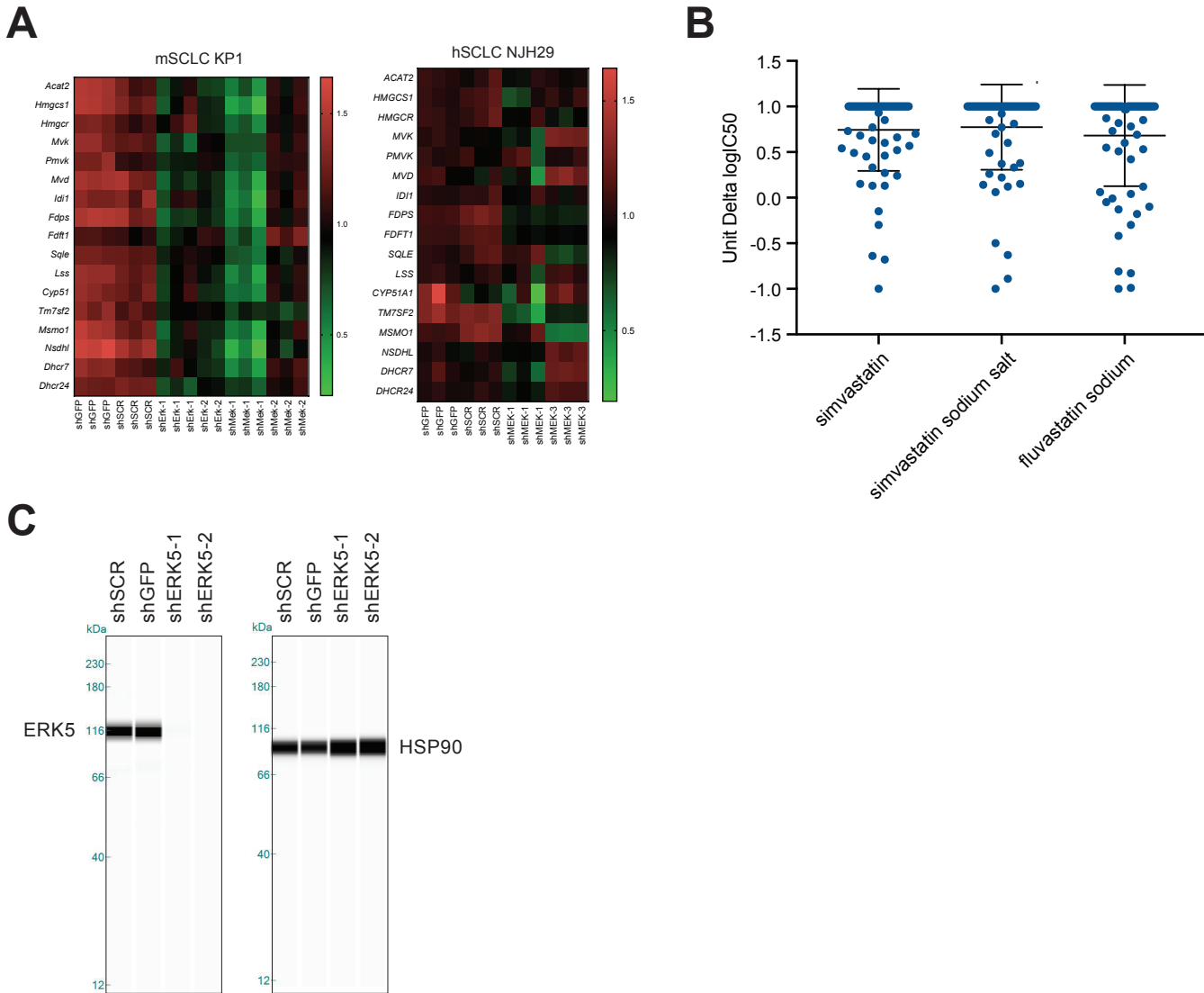


# Figure S7



**Figure S7: Human SCLC cells are sensitive to inhibition of the mevalonate pathway**

**(A)** Data from the normalized RNA-seq analysis (FPM values) with MEK5 and ERK5 knockdown cells and downregulation of the mevalonate pathway (fold-changes are shown in Figure 5A).

**(B)** 70 human SCLC cell lines treated with 3 drugs inhibiting the mevalonate pathway. Data shown are mean with standard deviation, relative to controls. Values below 1 indicate growth inhibition. Note that ~1/3rd of the cell lines show some sensitivity to these inhibitors (with good concordance for each inhibitor - data not shown).

**(C)** Protein analysis of hSCLC NJH29 cells for ERK5 levels (by Simple Western<sup>TM</sup> immunoassays, on the right) in control and knock-down cells. HSP90 was used as a loading control; n=1 per individual hairpin. Molecular weights (kDa) are indicated.