

Supplemental material

Figure S1.	PRISMA Flow Diagram
Figure S2.	Changes in TC levels after administration of grape products as compared with controls
Figure S3.	Changes in HDL-C levels after administration of grape products as compared with controls.
Figure S4.	Changes in TG levels after administration of grape products as compared with control
Figure S5.	Funnel plots of effect size versus standard error for studies evaluating levels of TC (panel A), HDL-C (panel B), LDL-C (panel C) levels after administration of grape products or placebo.
Figure S6.	Funnel plots of effect size versus standard error (panel A) and Duval and Tweedie's trim and fill analysis (panel B) for studies evaluating levels of TG after administration of grape products or placebo.
Table S1.	Meta-regression analyses for TC, HDL-C, TG and LDL-C.

Figure S1. PRISMA Flow Diagram

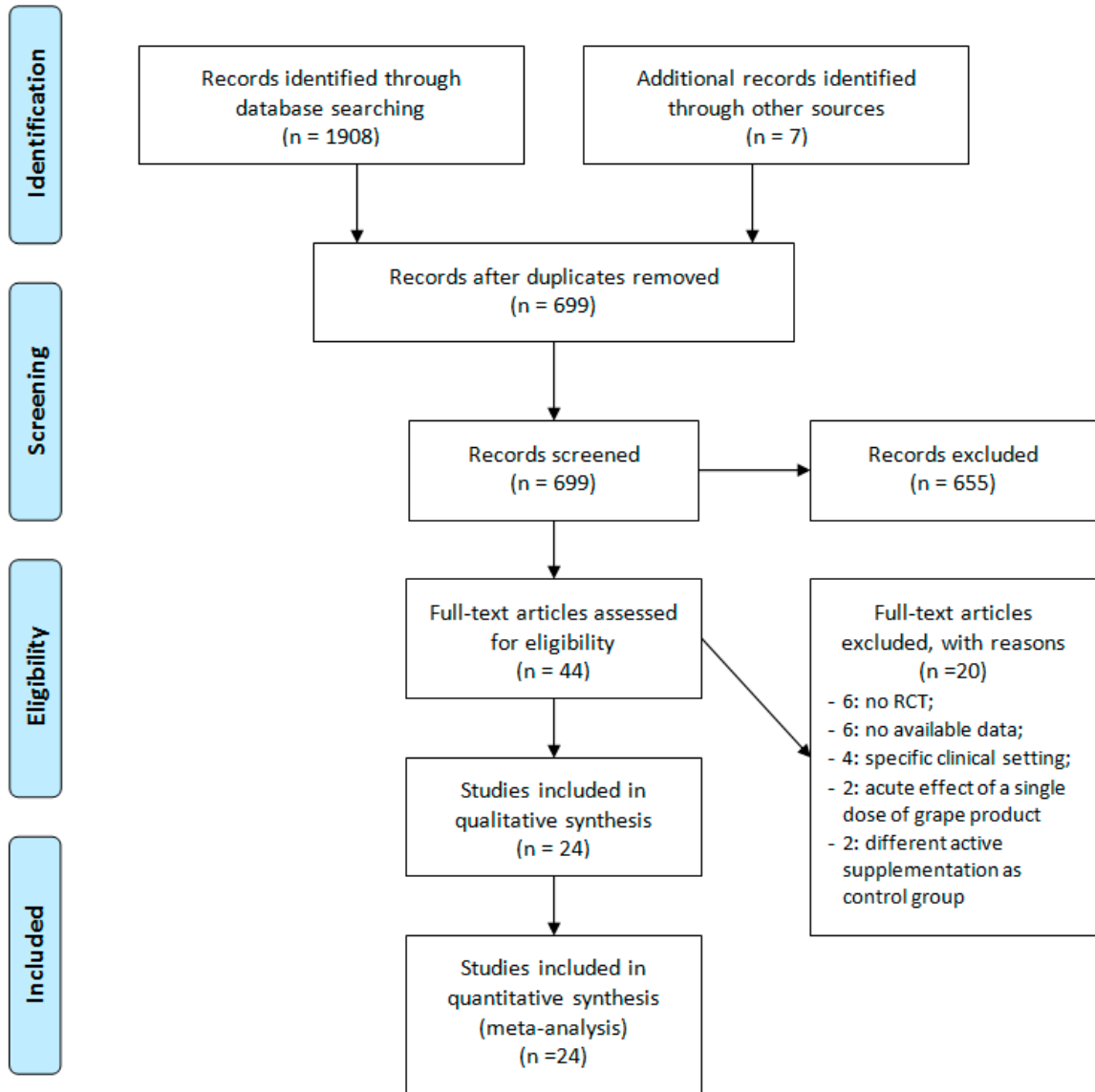


Figure S2. Changes in TC levels after administration of grape products as compared with controls

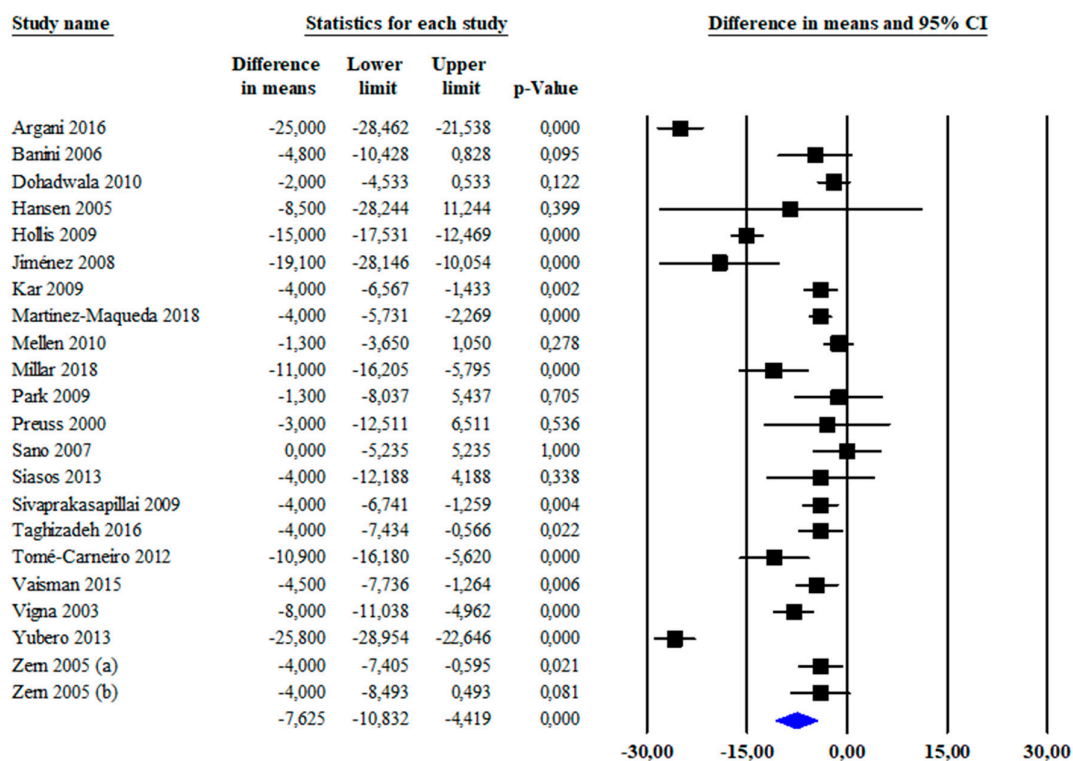


Figure S3. Changes in HDL-C levels after administration of grape products as compared with controls.

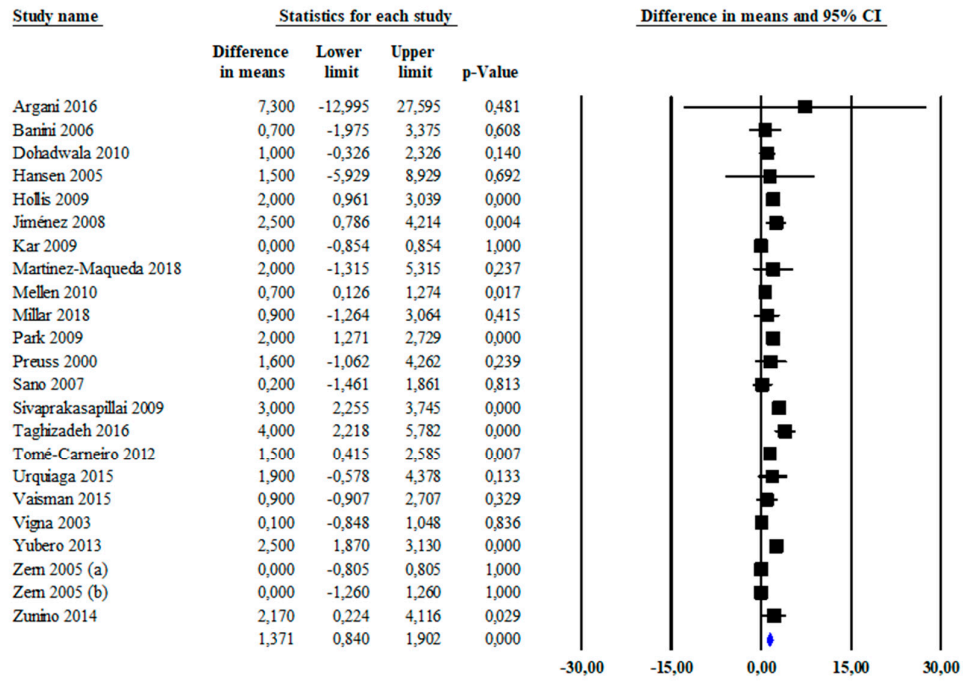


Figure S4. Changes in TG levels after administration of grape products as compared with controls

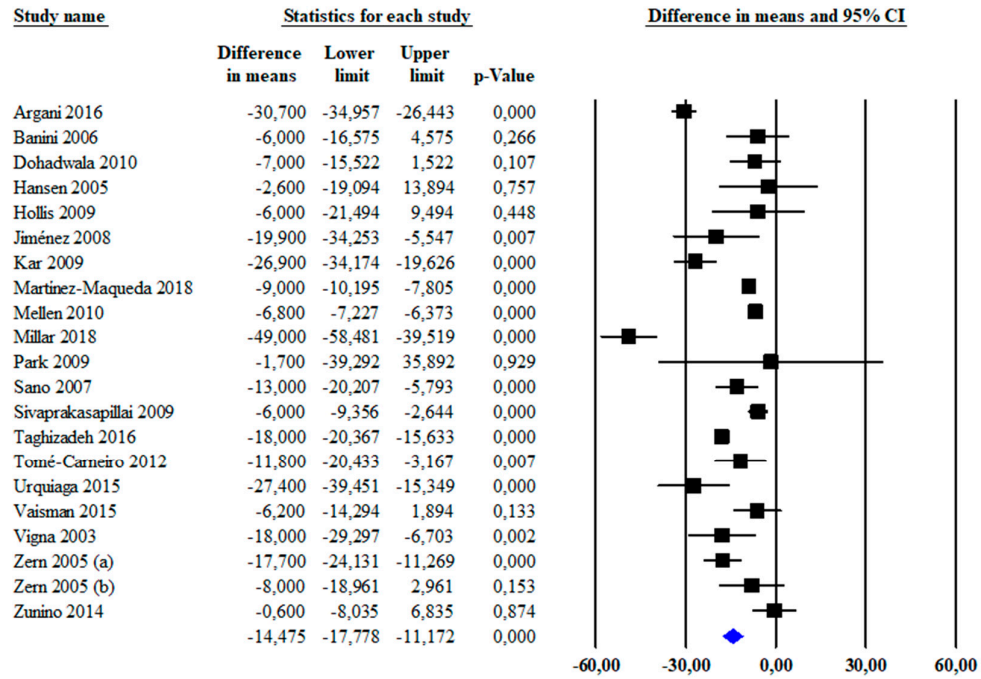


Figure S5. Funnel plots of effect size versus standard error for studies evaluating levels of TC (panel A), HDL-C (panel B), LDL-C (panel C) after administration of grape products or placebo.

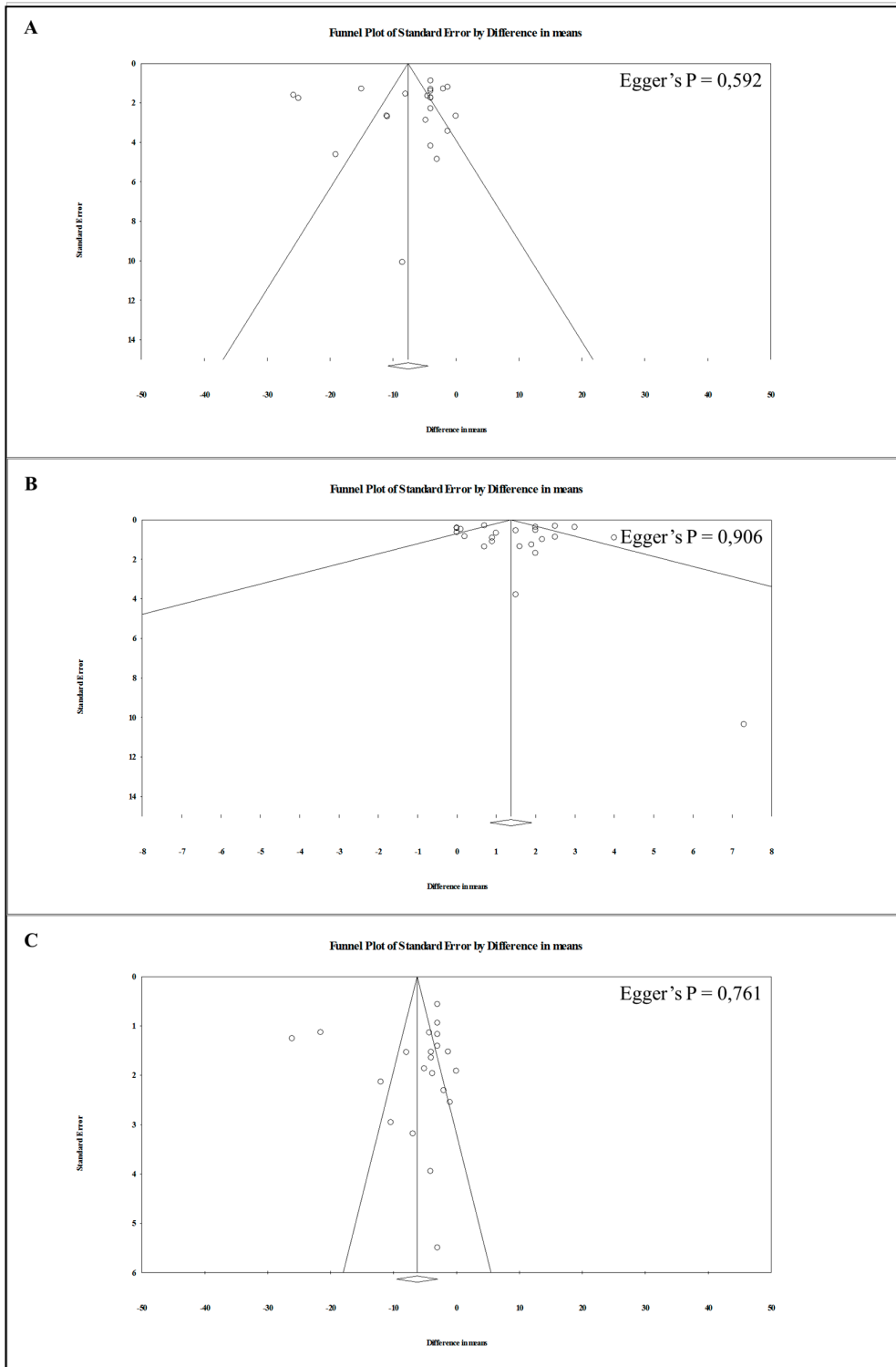


Figure S6. Funnel plots of effect size versus standard error (panel A) and Duval and Tweedie's trim and fill analysis (panel B) for studies evaluating levels of TG after administration of grape products or placebo.

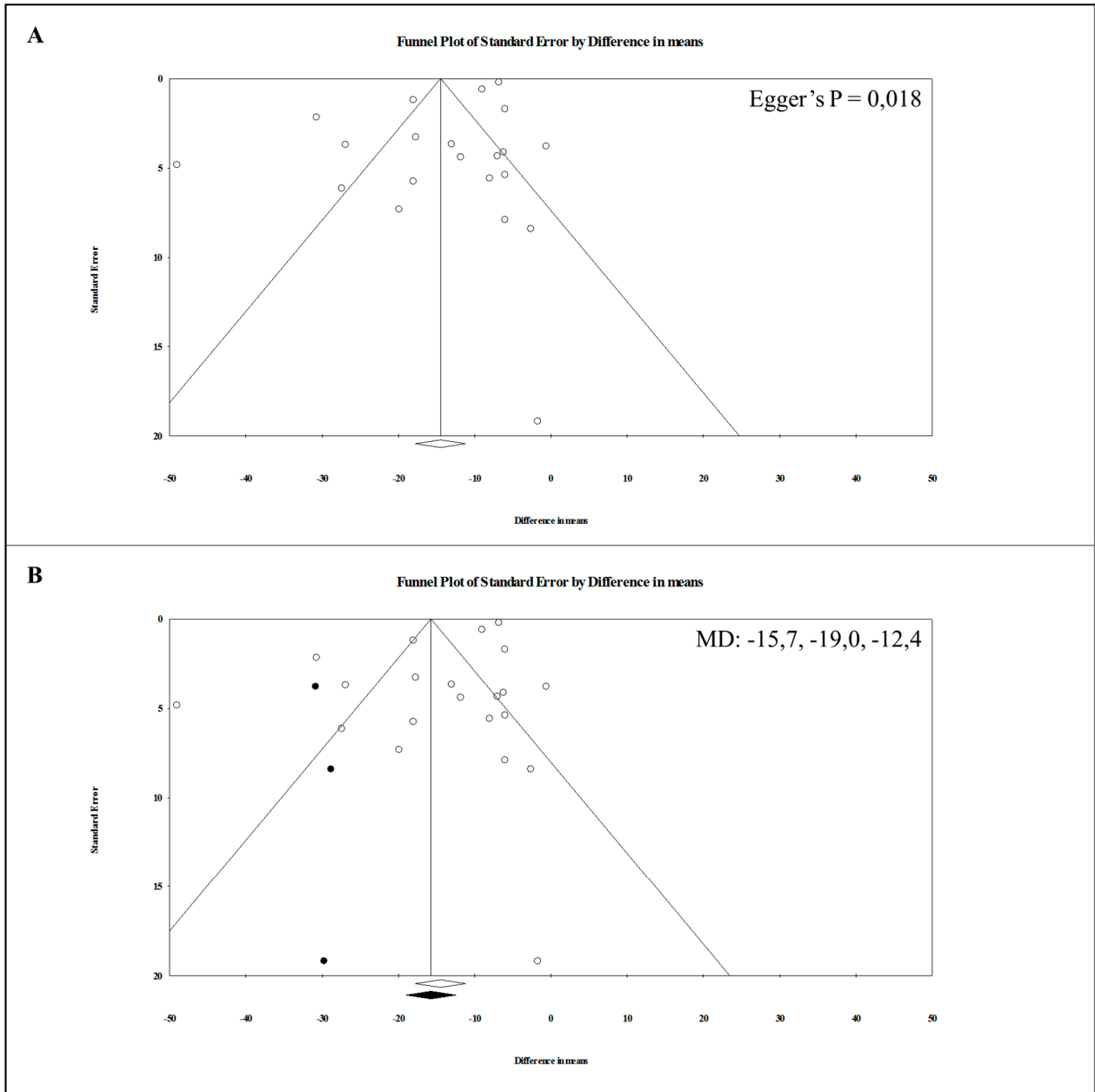


Table S1. Meta-regression analyses for TC, HDL-C, TG and LDL-C.

A) TC (22 datasets -21 studies)	Z-value	P-value
Age	0.29	0.77
Male gender	0.34	0.73
BMI	0.34	0.74
Diabetes	0.63	0.53
Dyslipidemia	0.19	0.85
Follow up	-1.33	0.19

B) HDL-C (23 datasets – 22 studies)	Z-value	P-value
Age	-2.58	0.01
Male gender	-0.19	0.85
BMI	-0.34	0.74
Diabetes	-1.54	0.12
Dyslipidemia	-0.51	0.61
Follow up	1.02	0.31

C) TG (21 datasets – 20 studies)	Z-value	P-value
Age	-0.59	0.56
Male gender	-0.34	0.73
BMI	0.82	0.41
Diabetes	-1.25	0.21
Dyslipidemia	-1.86	0.06
Follow up	-0,29	0.77

D) LDL-C (21 datasets – 20 studies)	Z-value	P-value
Age	-0.19	0.84
Male gender	0.97	0.33
BMI	-0.24	0.81
Diabetes	0.72	0.47
Dyslipidemia	-0.13	0.90
Follow up	0.23	0.82