

Supplementary data

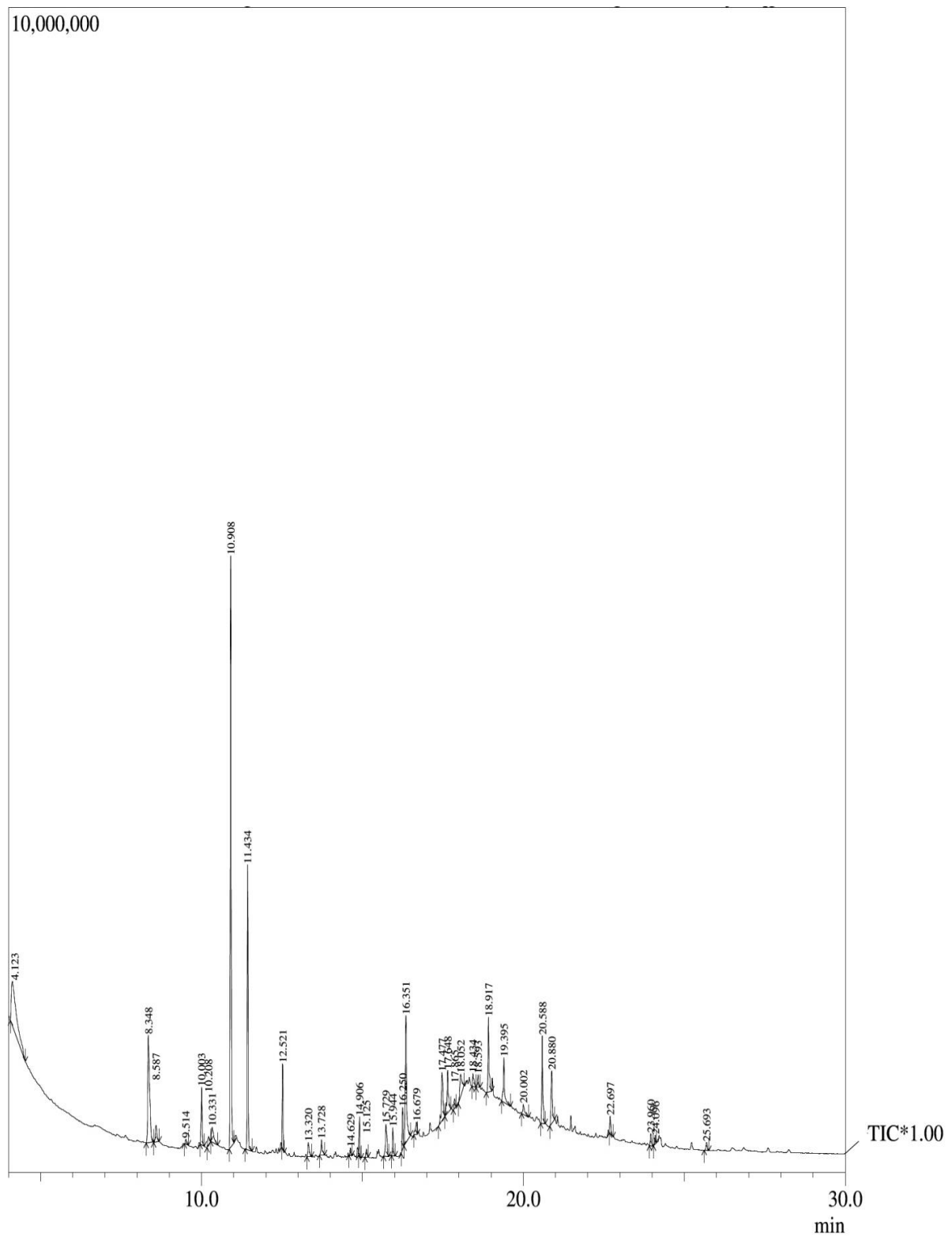


Figure S1. GC-MS chromatogram of cypermethrin with *Bacillus thuringiensis* strain SG4.

Table S1. Morphological and biochemical characteristics of *Bacillus thuringiensis* strain SG4.

Morphological and Biochemical Test	Response
Gram reaction	+
Catalase	+

Gelatin liquefaction	-
Lipase	-
Siderophore production	+
P-solubilization	+
IAA production	+
Cell shape	Rods
Arrangement	Scattered