

Supplementary figure

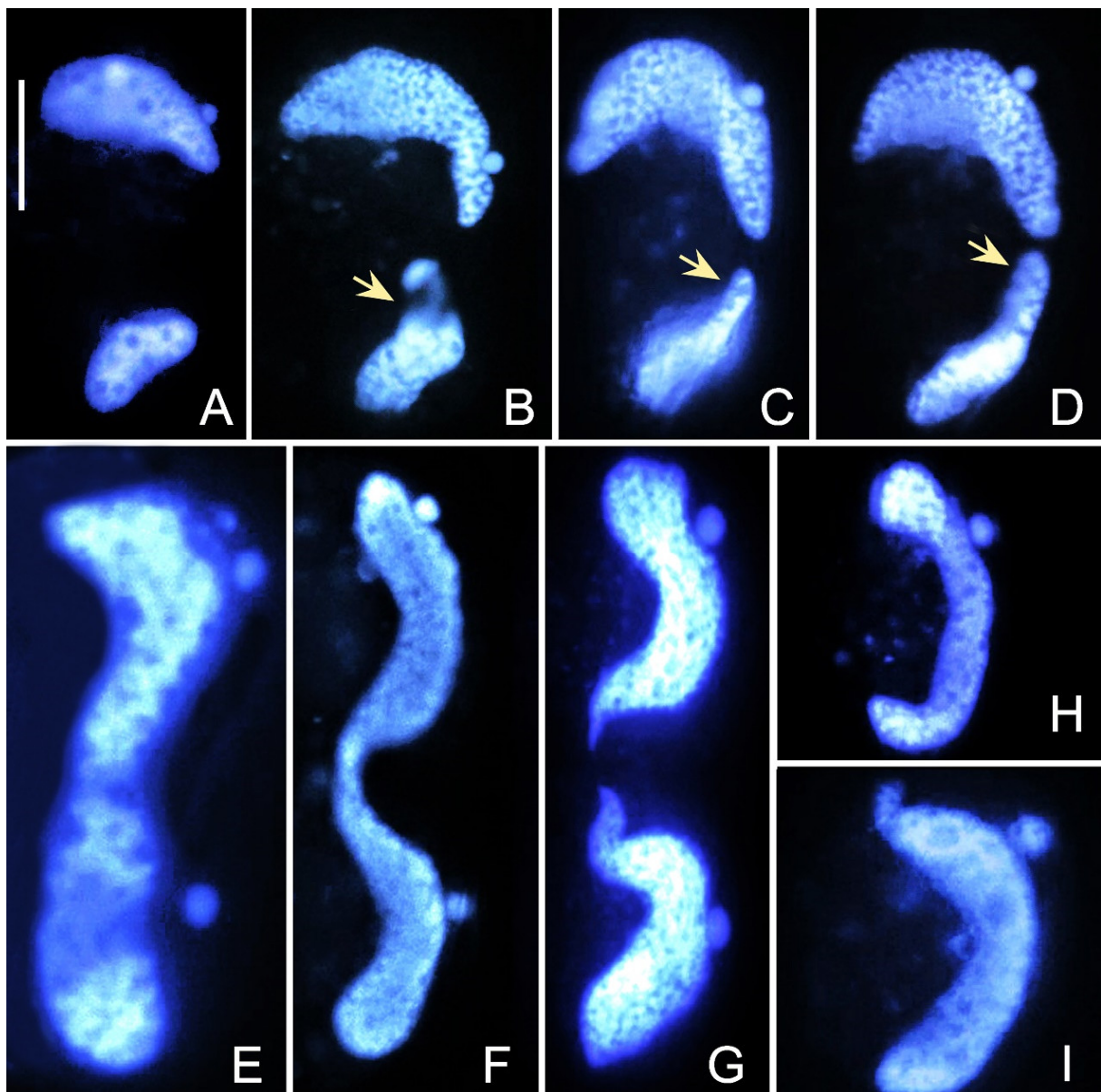


Figure S1. Nuclear events during new MAC development and the first postconjugational cell division in *Euplotes raikovi*. (A-D) Both the parental MAC (indicated in yellow arrows) and the MAC anlage increase in size, fuse together, and finally develop into the new MAC. (E-I) Nuclear events during the first postconjugational cell division. There is no observations of the degeneration of the fused parental MAC. Scale bar = 20 μm .