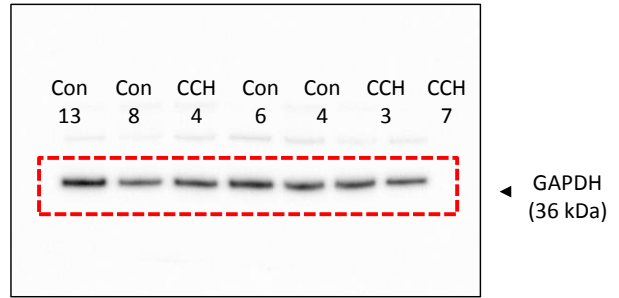
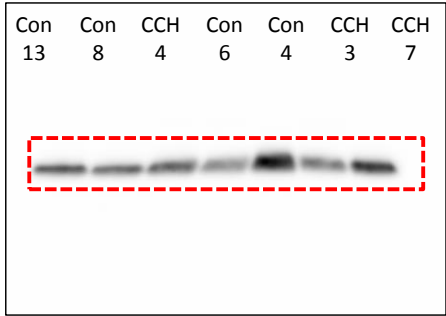


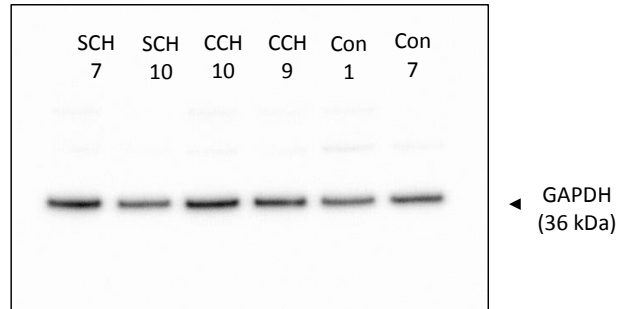
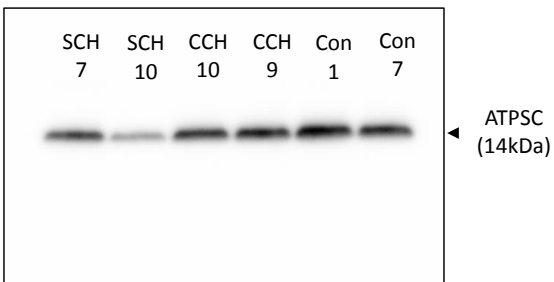
### S5 Fig.

Immunoblotting of cardiac ATPSC and GAPDH. A membrane was cut at around 25 kDa and independently stained with the primary antibody. Exposure time was set at 30 s for ATPSC detection, and 10s for GAPDH detection. Dashed lines indicate cropped immunoblots presented in Fig 1e.

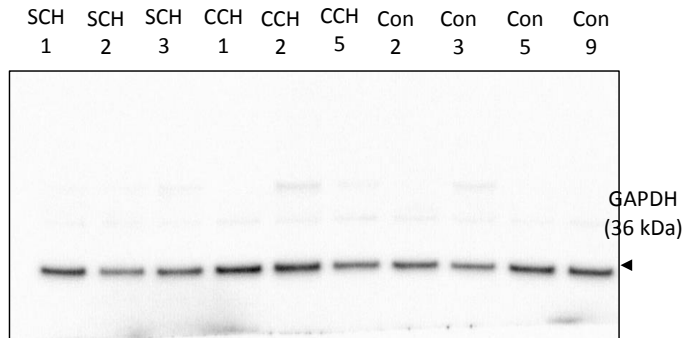
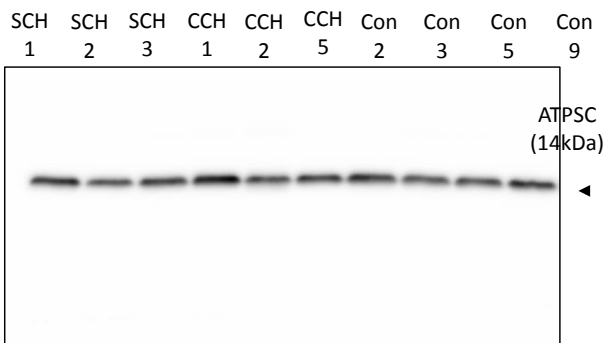
#### WB1



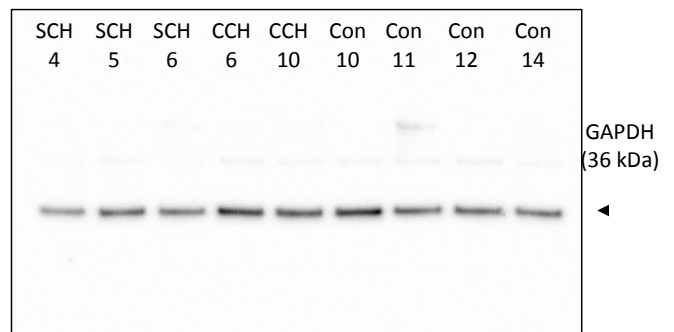
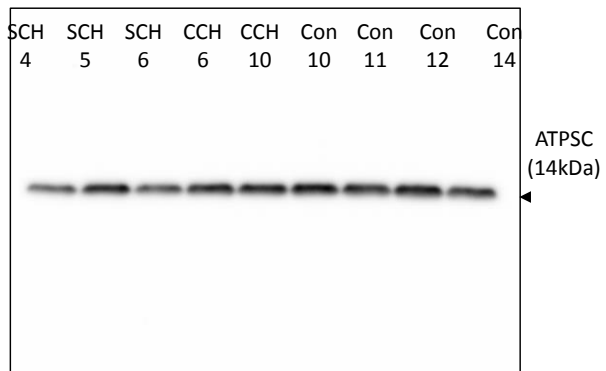
#### WB2



#### WB3



## WB4



## WB5

