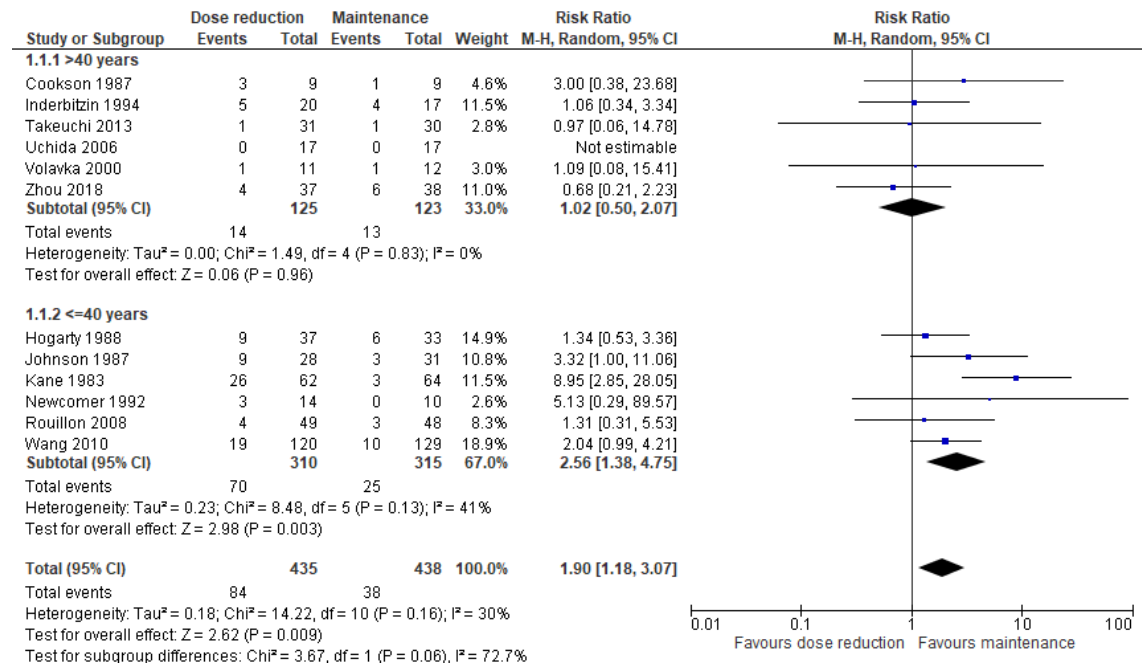


Supplementary Figure S6. Forest plot: Subgroup analysis, factors related to patients' demographic and clinical characteristics

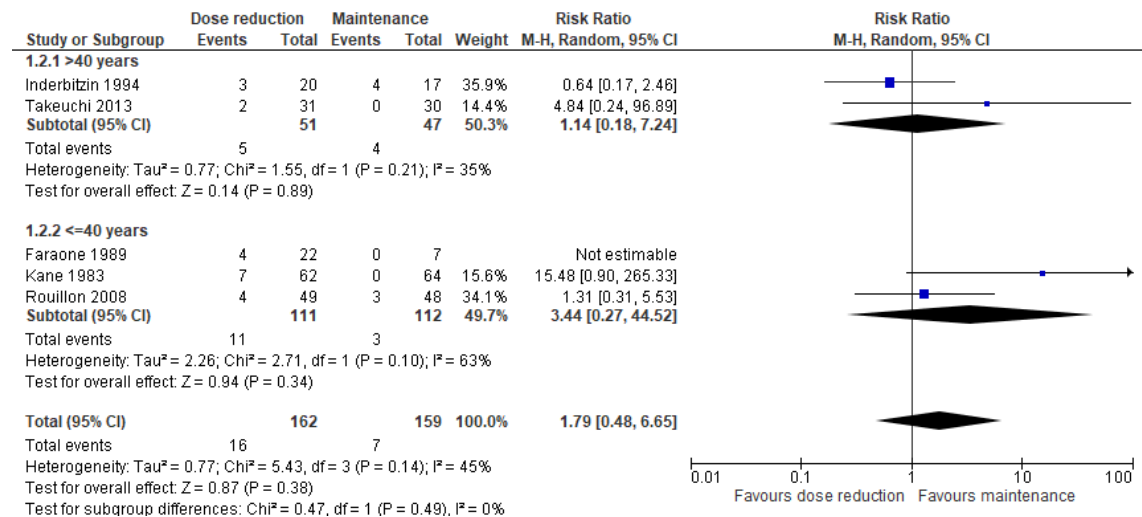
A. Mean age

1. Relapse/Hospitalization

1.1 Relapse (primary outcome)

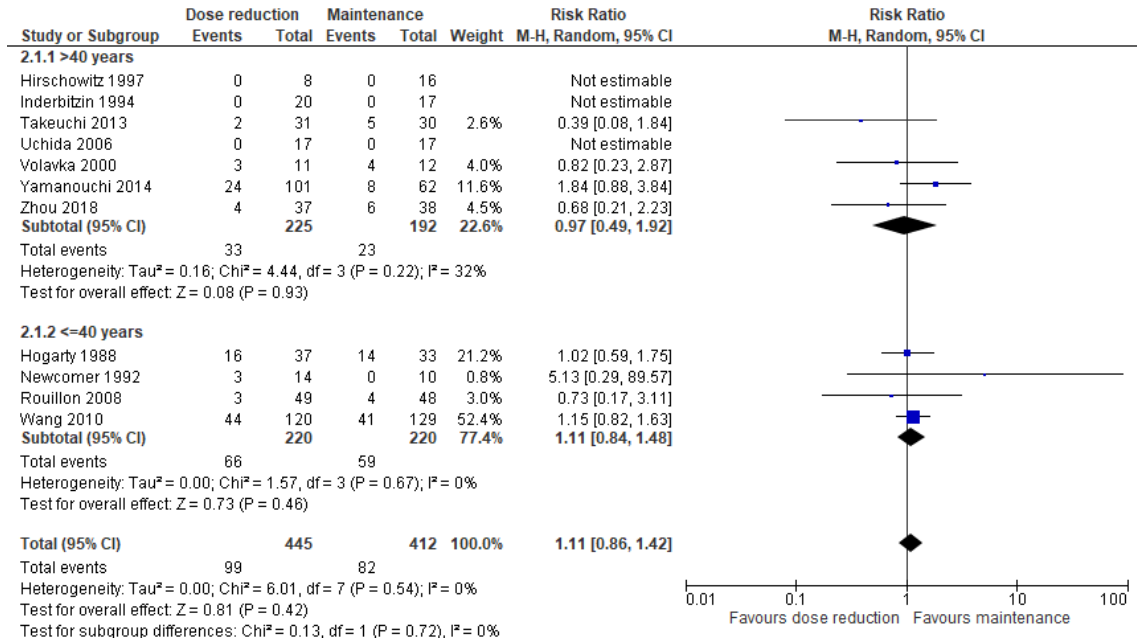


1.2 Hospitalization

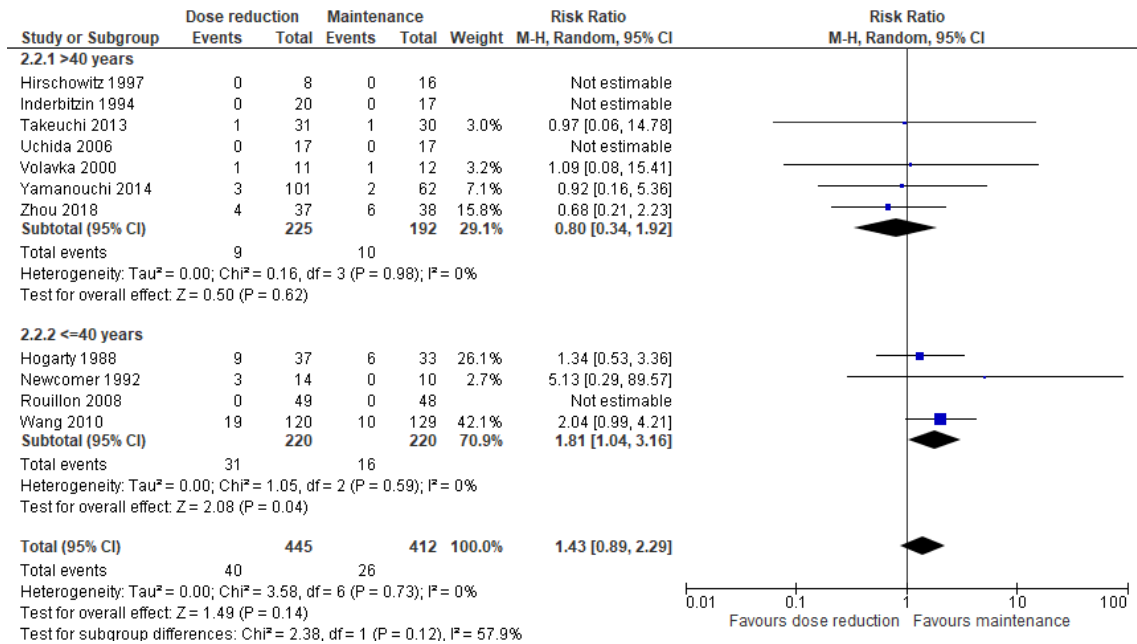


2. Study discontinuation

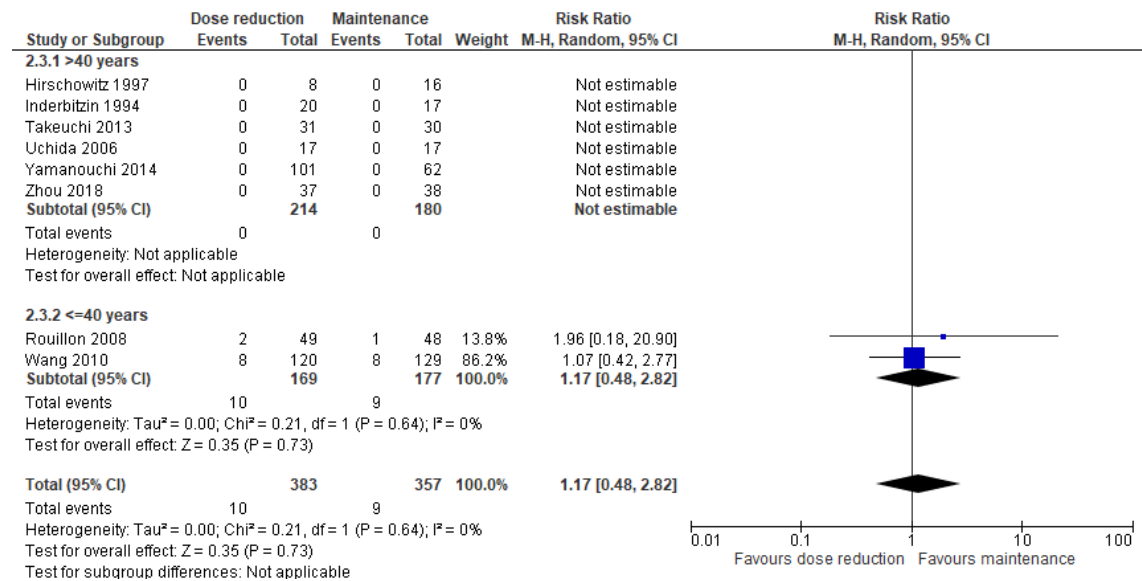
2.1 Study discontinuation due to all causes



2.2 Study discontinuation due to inefficacy

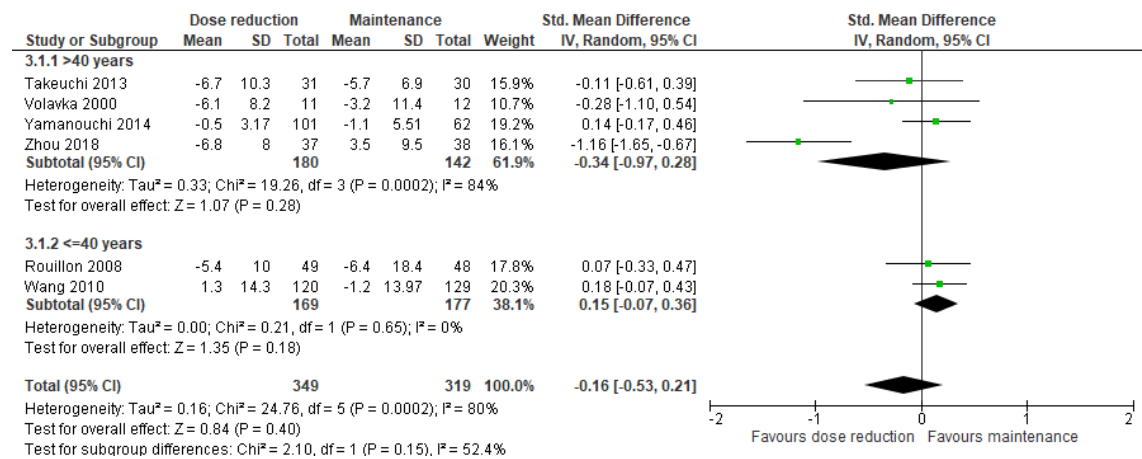


2.3 Study discontinuation due to intolerance

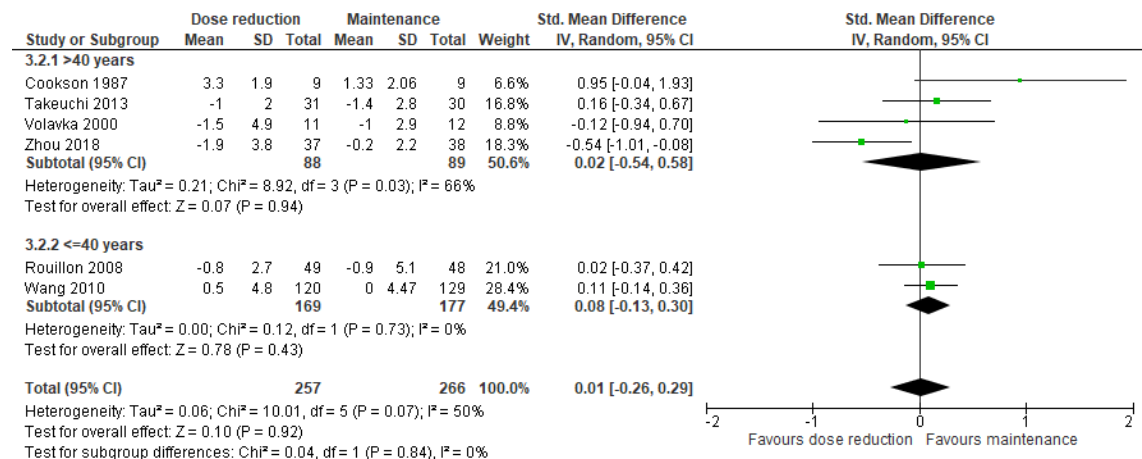


3. Psychopathology

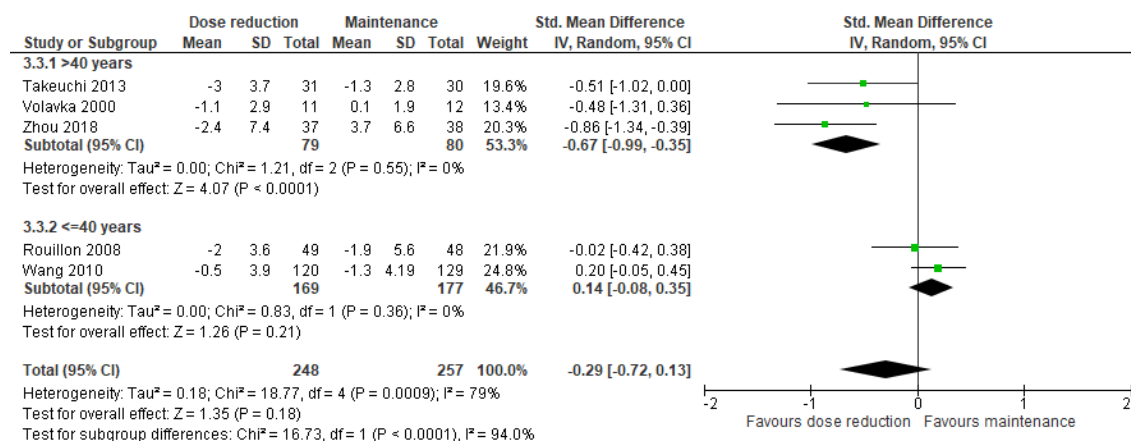
3.1 Total



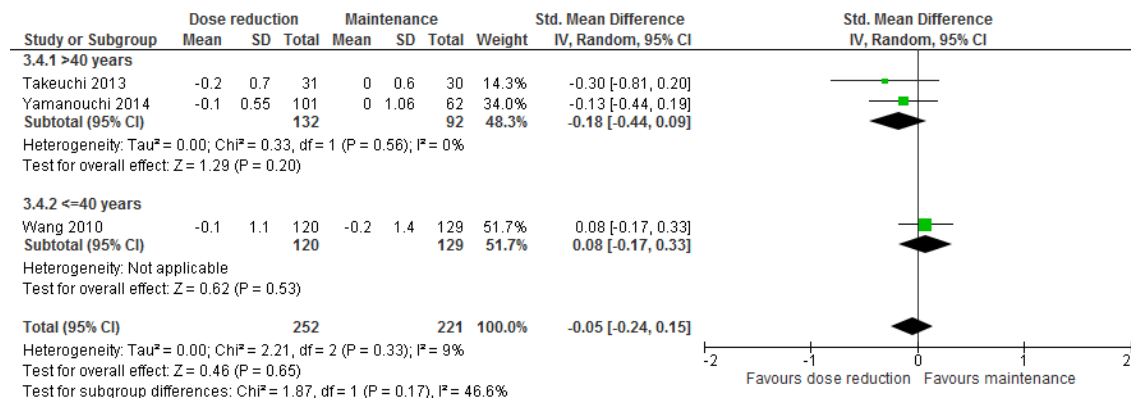
3.2 Positive symptoms



3.3 Negative symptoms

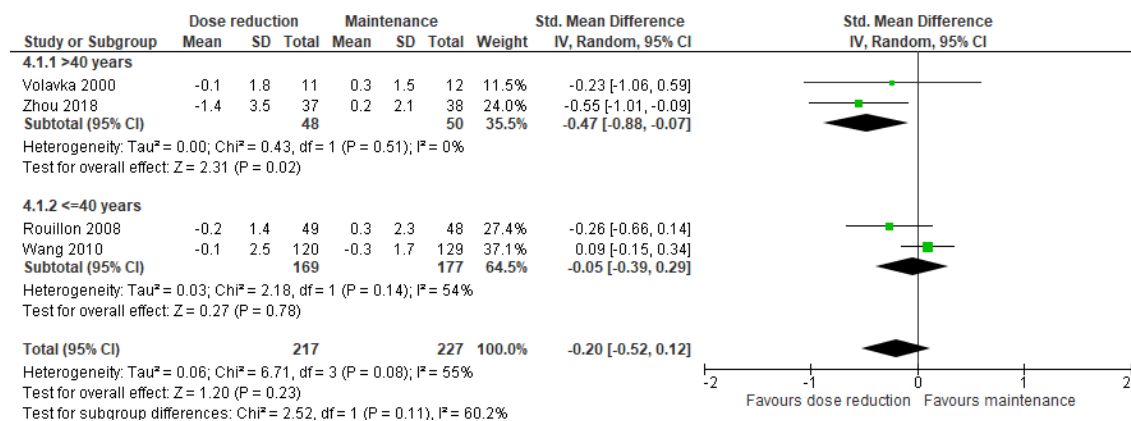


3.4 CGI-S

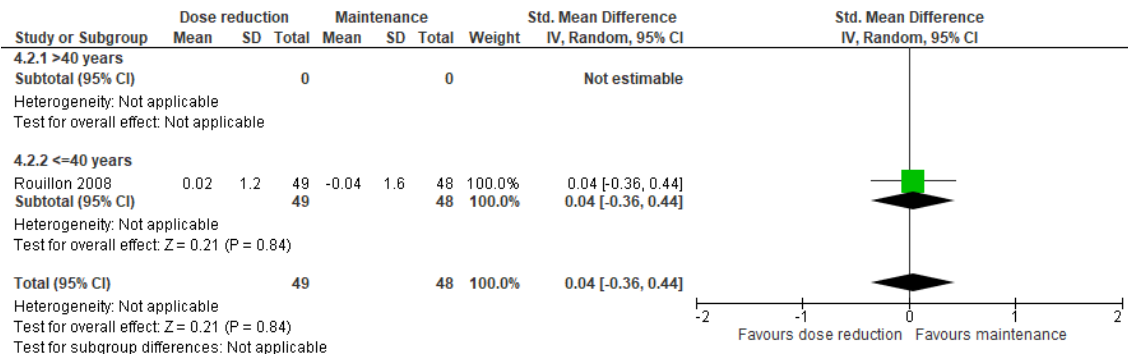


4. Adverse effects

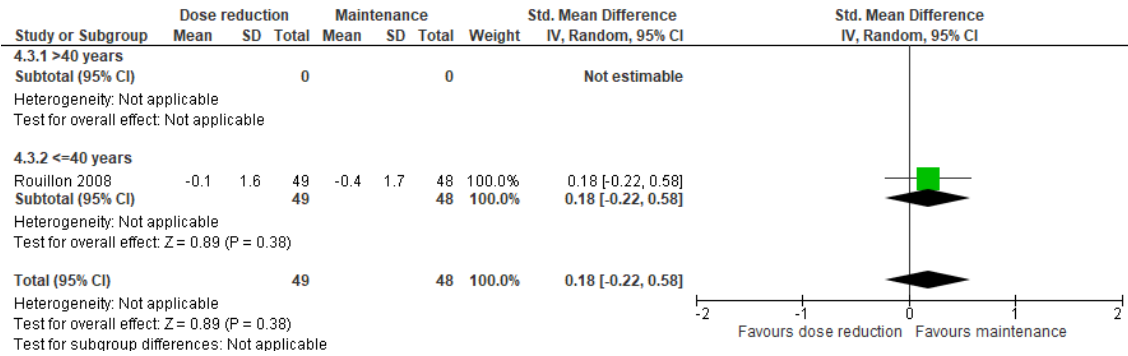
4.1 SAS



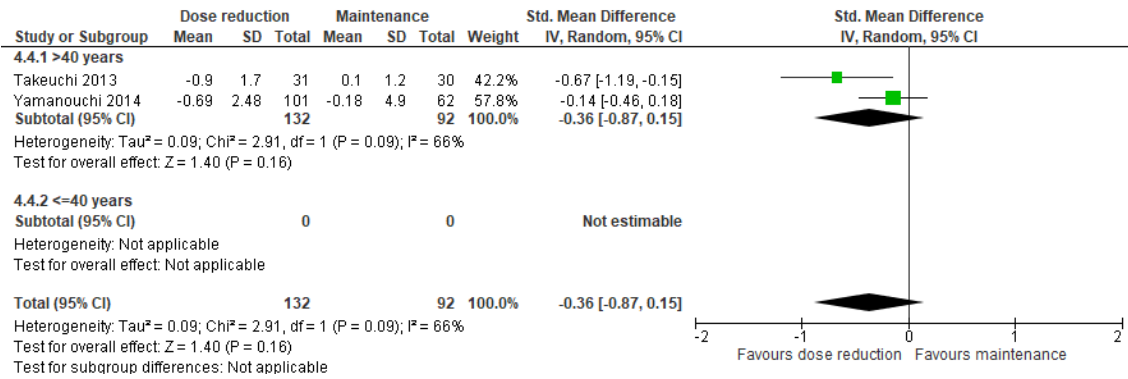
4.2 BARS



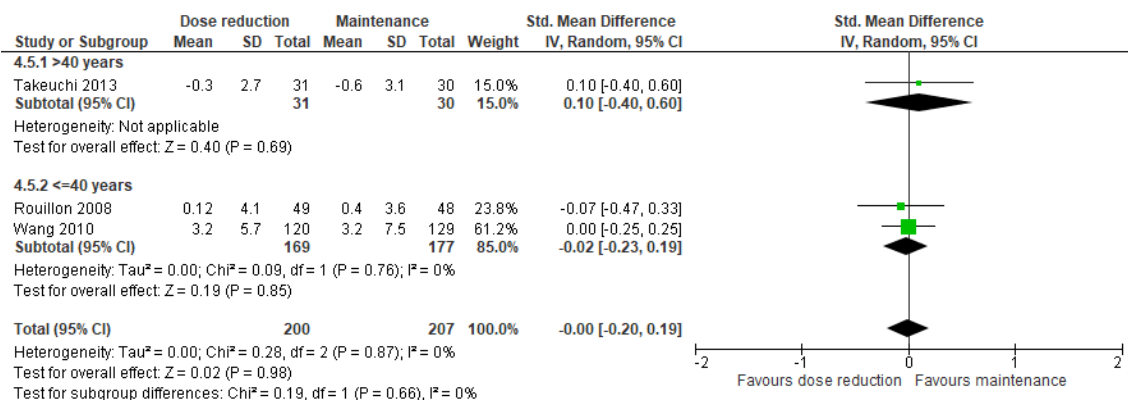
4.3 AIMS



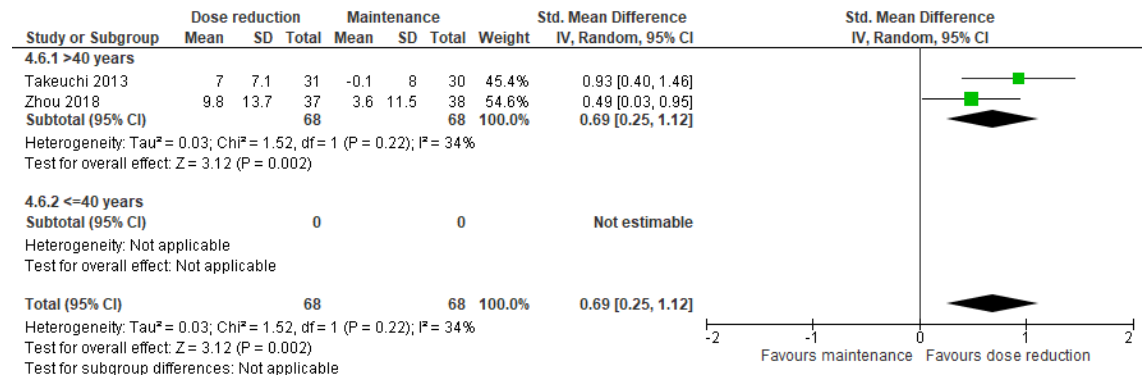
4.4 DIEPSS



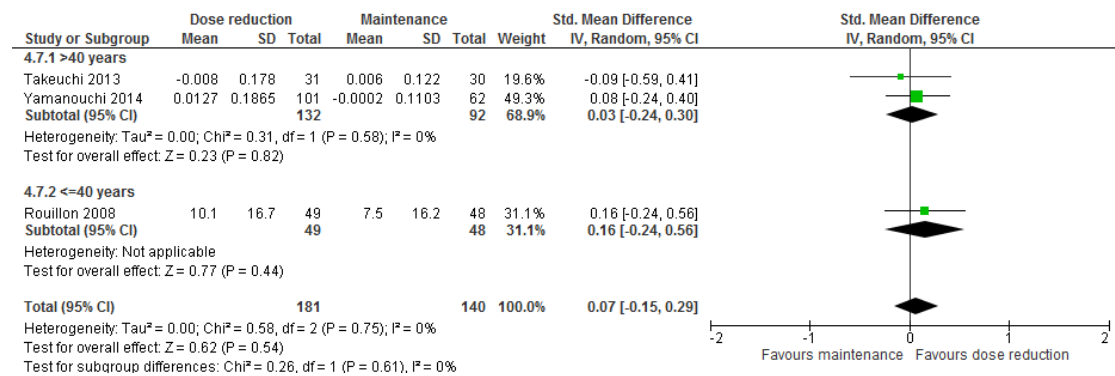
4.5 Body weight



4.6 Neurocognition



4.7 QOL

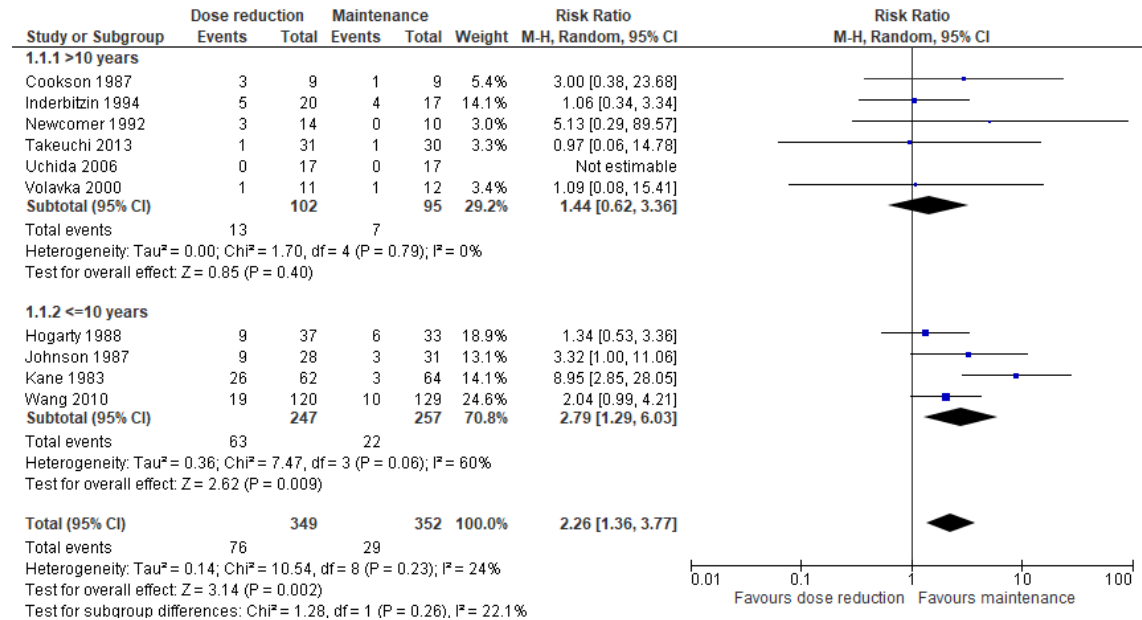


Abbreviations: AIMS, Abnormal Involuntary Movement Scale; BARS, Barnes Akathisia Rating Scale; CGI-S, Clinical Global Impressions – Severity scale; DIEPSS, Drug-Induced Extrapyrimal Symptoms Scale; QOL, quality of life; SAS, Simpson-Angus Scale

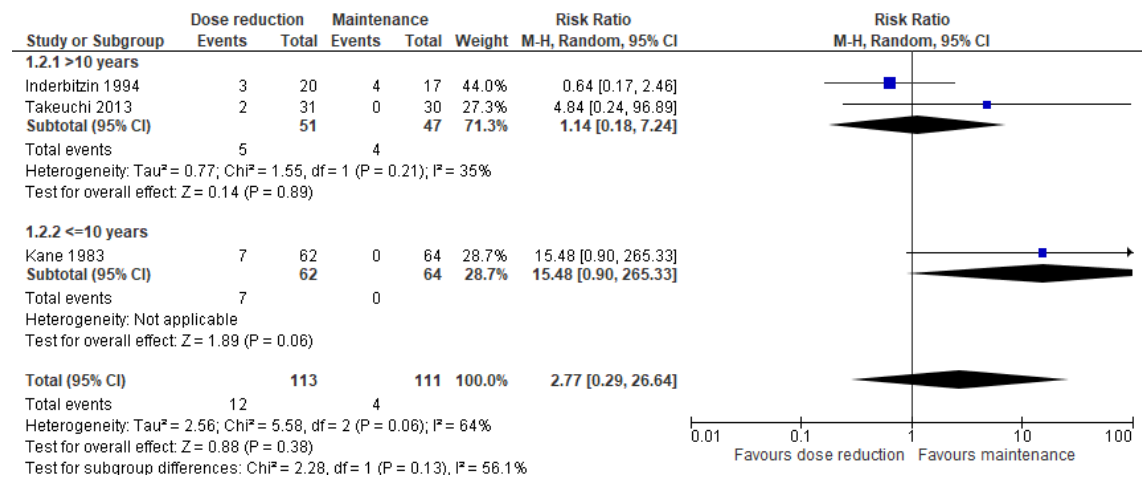
B. Mean illness duration

1. Relapse/Hospitalization

1.1 Relapse (primary outcome)

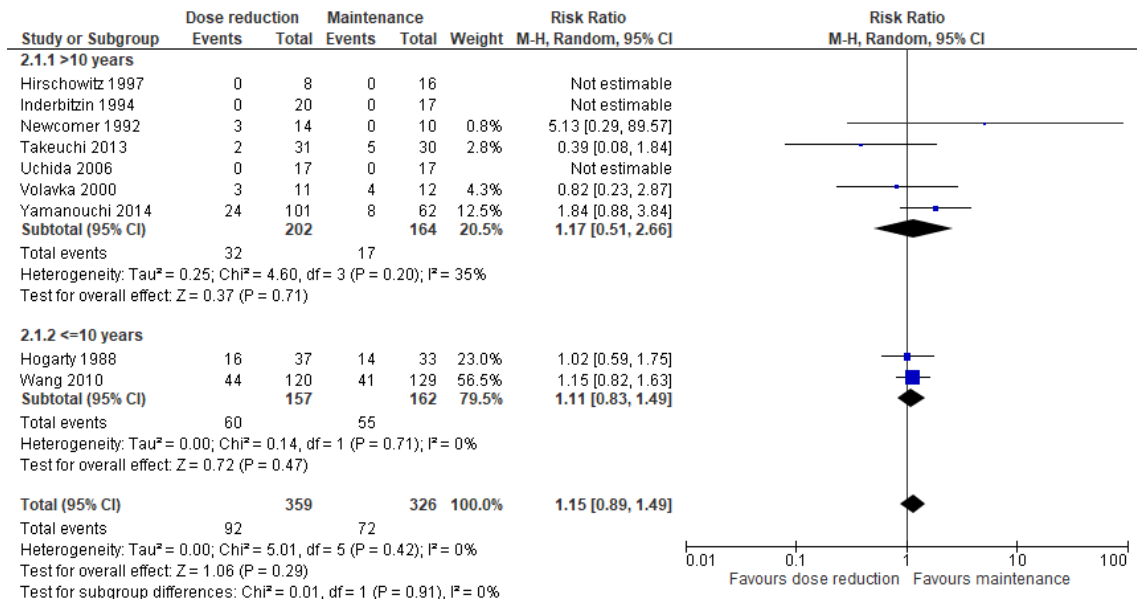


1.2 Hospitalization

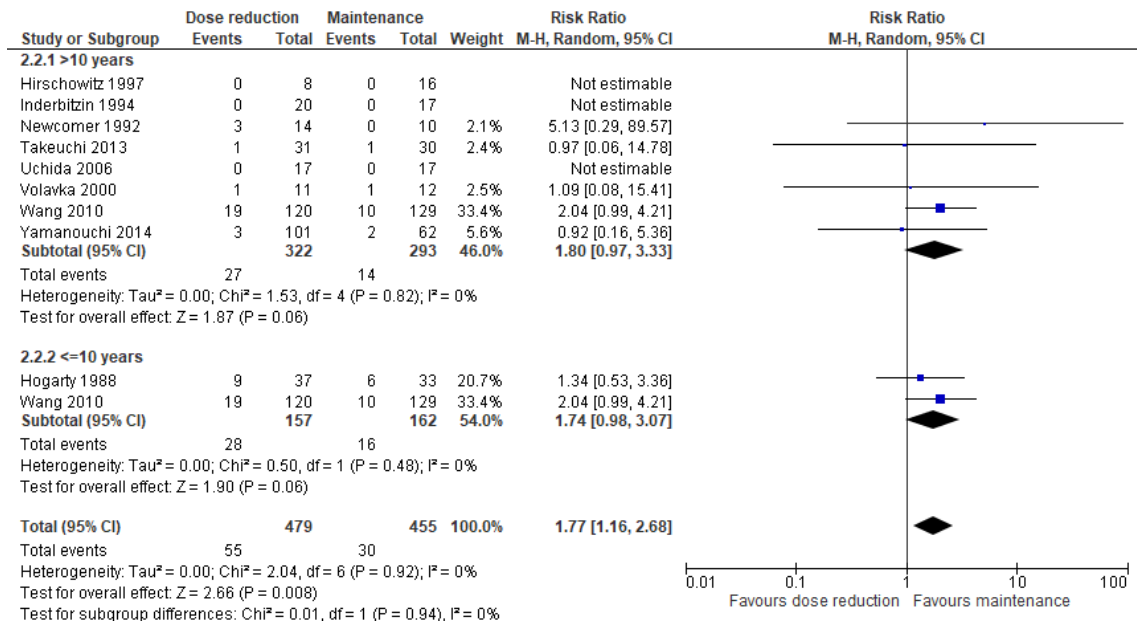


2. Study discontinuation

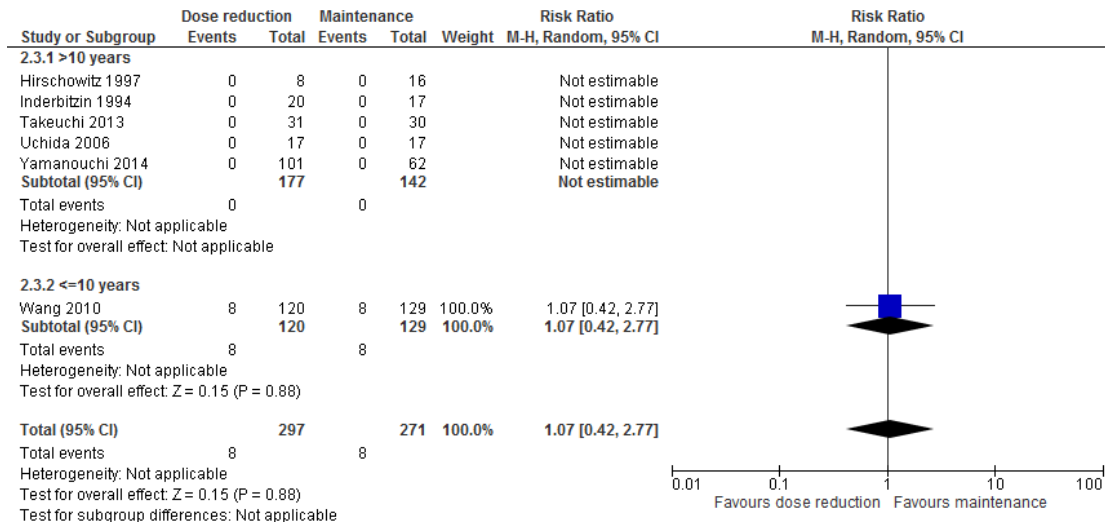
2.1 Study discontinuation due to all causes



2.2 Study discontinuation due to inefficacy

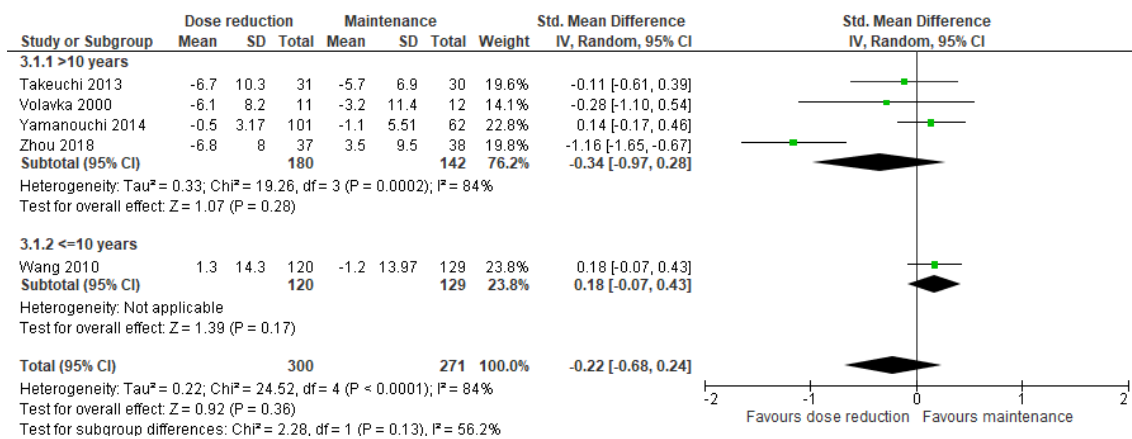


2.3 Study discontinuation due to intolerability

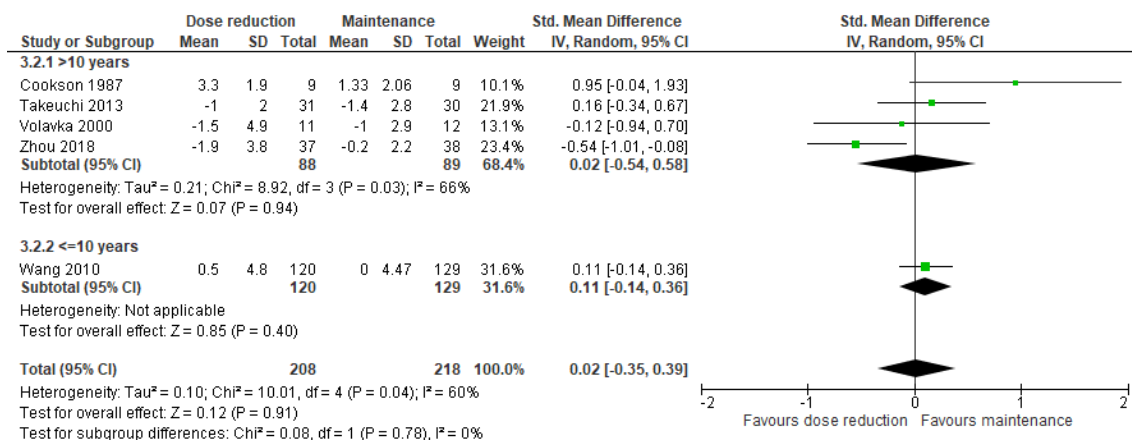


3. Psychopathology

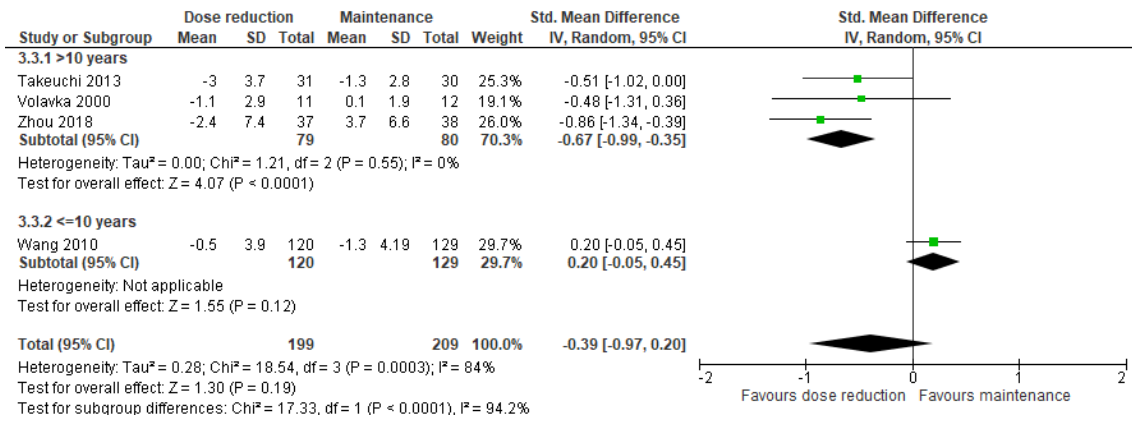
3.1 Total



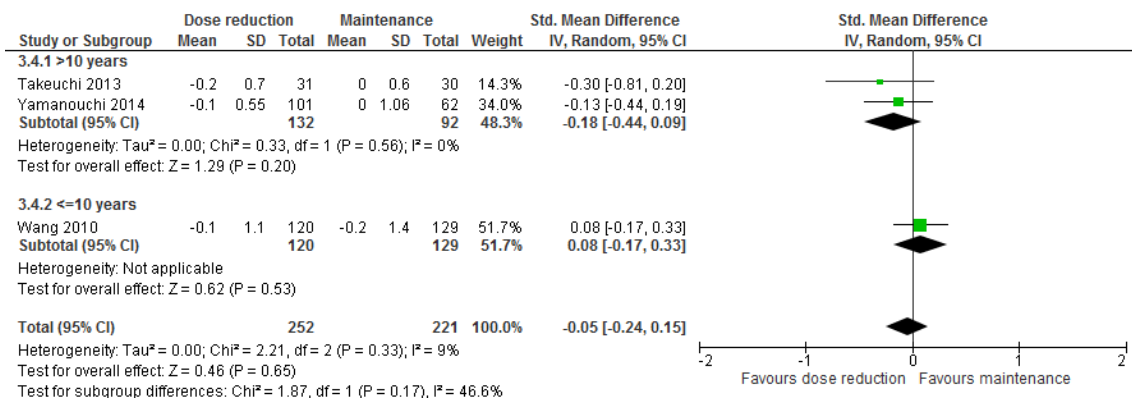
3.2 Positive symptoms



3.3 Negative symptoms

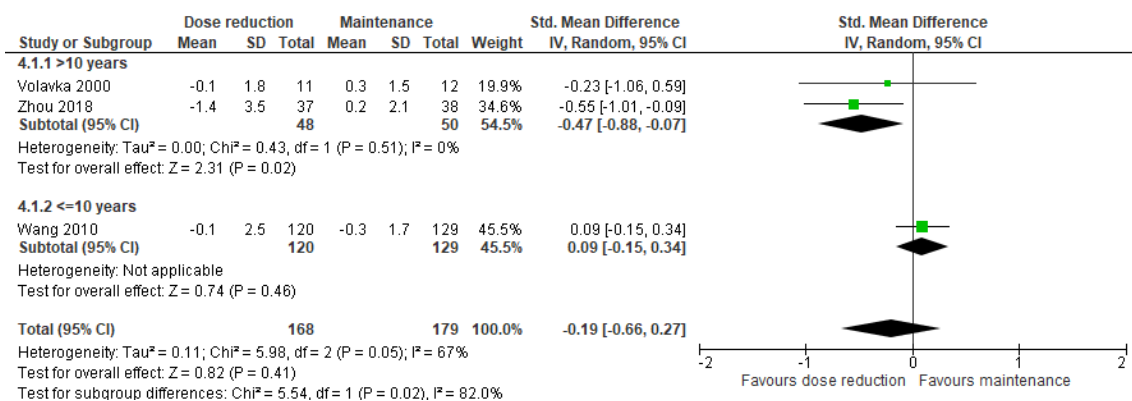


3.4 CGI-S

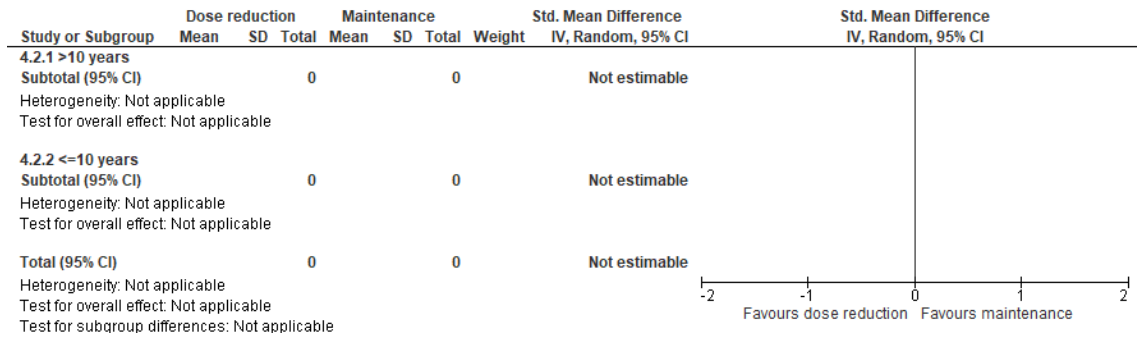


4. Adverse effects

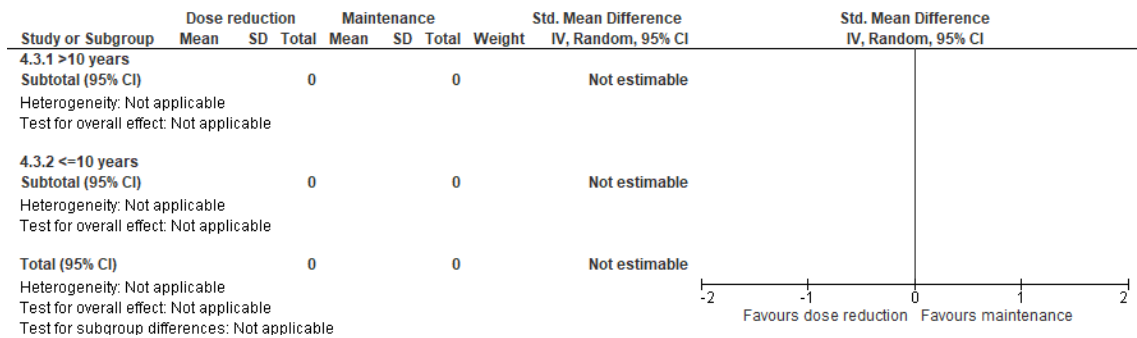
4.1 SAS



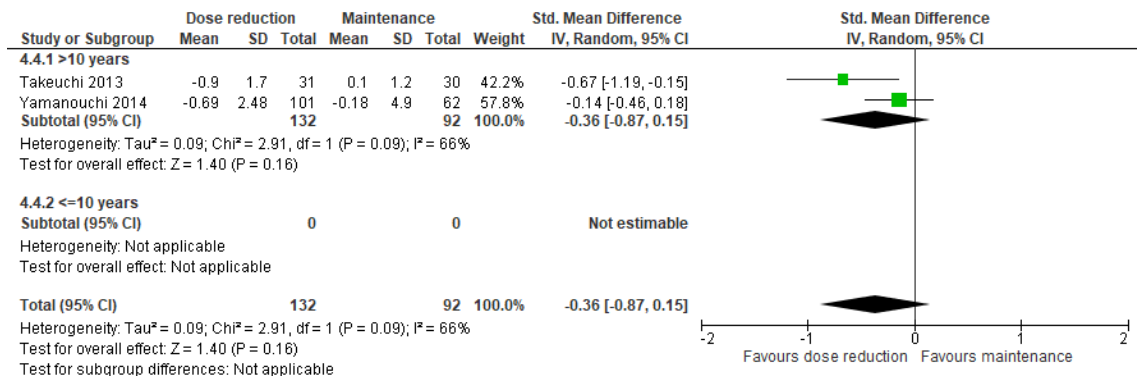
4.2 BARS



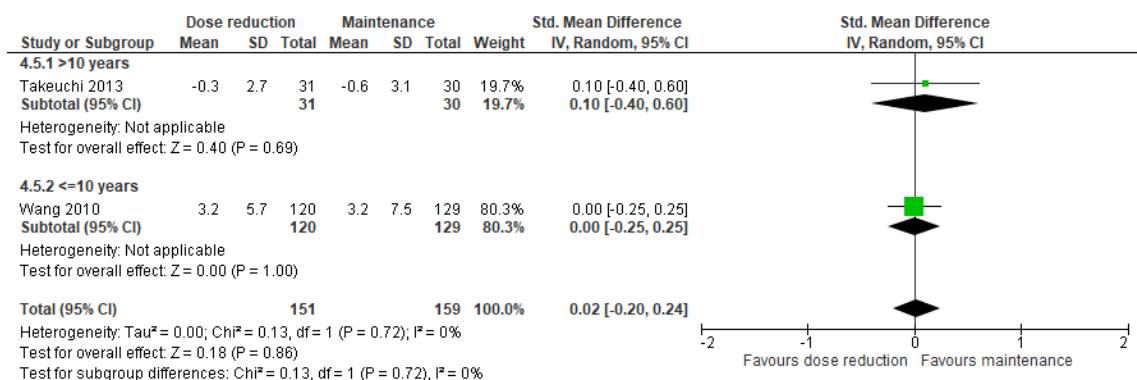
4.3 AIMS



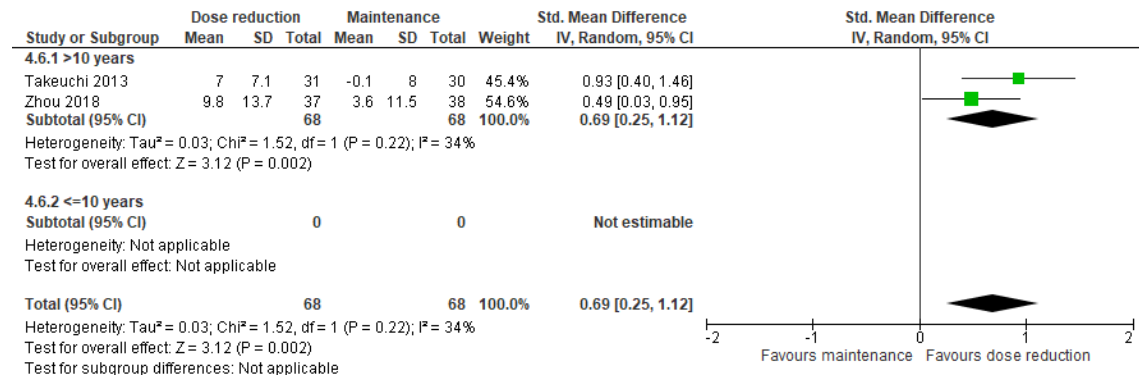
4.4 DIEPSS



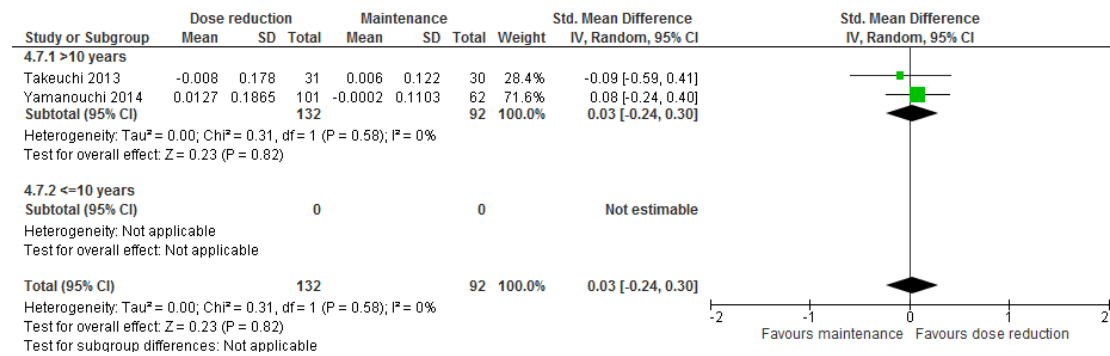
4.5 Body weight



4.6 Neurocognition



4.7 QOL

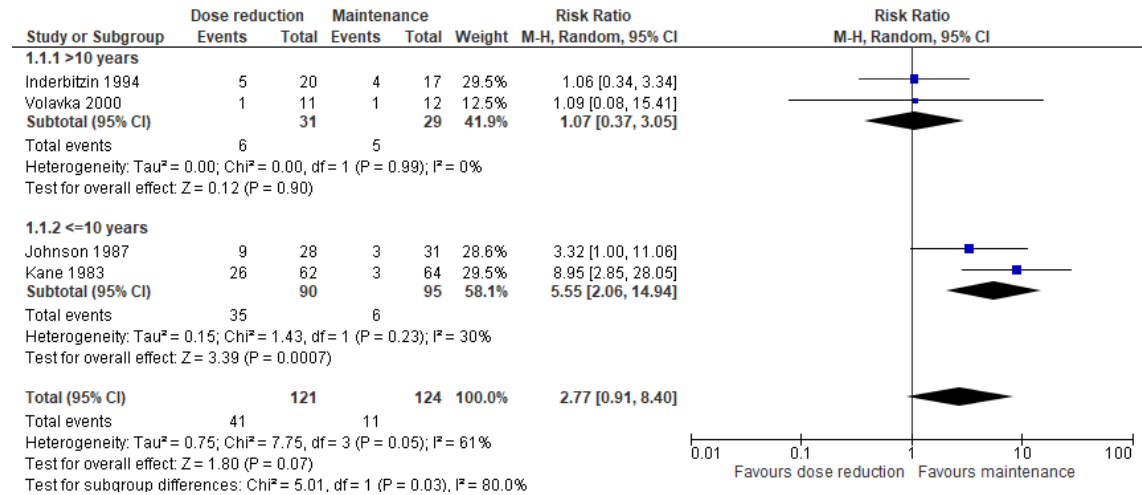


Abbreviations: AIMS, Abnormal Involuntary Movement Scale; BARS, Barnes Akathisia Rating Scale; CGI-S, Clinical Global Impressions – Severity scale; DIEPSS, Drug-Induced Extrapyrarnidal Symptoms Scale; QOL, quality of life; SAS, Simpson-Angus Scale

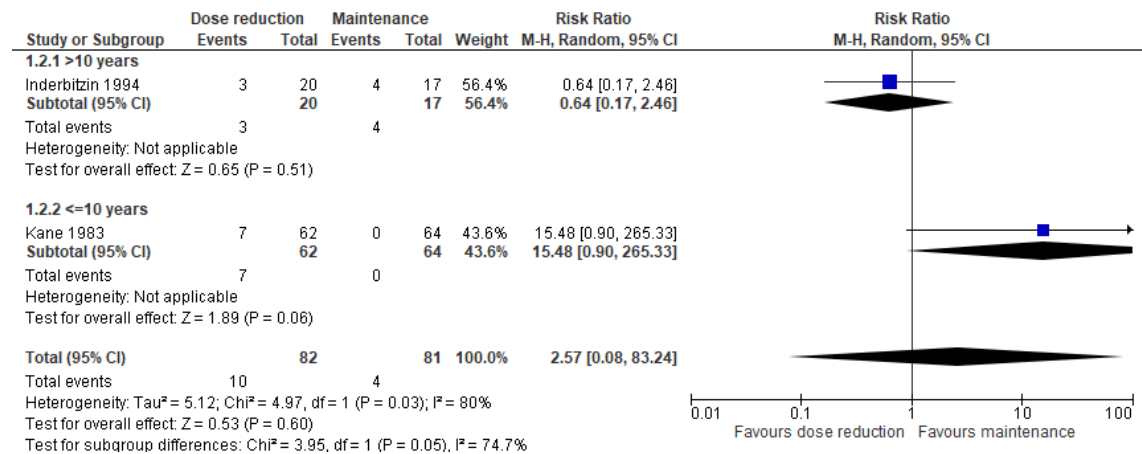
C. Mean treatment duration

1. Relapse/Hospitalization

1.1 Relapse (primary outcome)

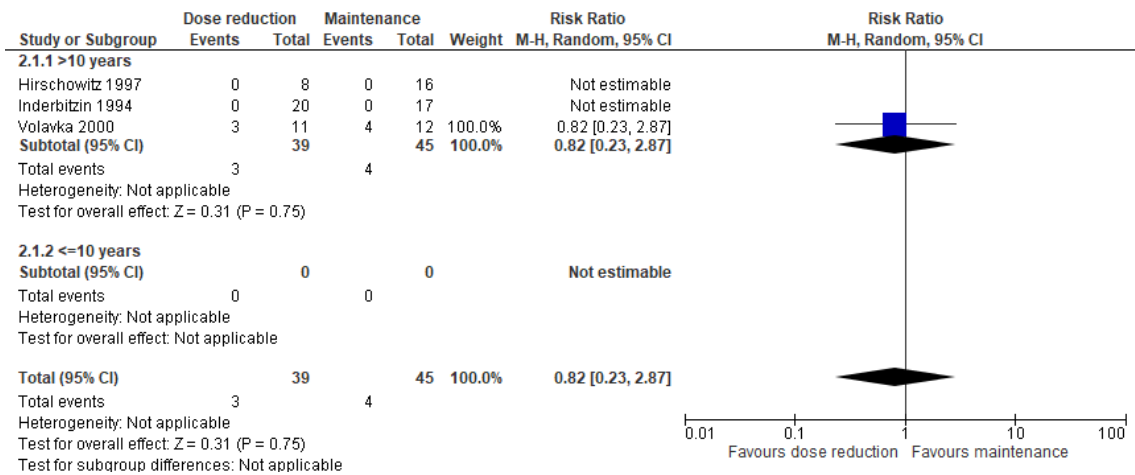


1.2 Hospitalization

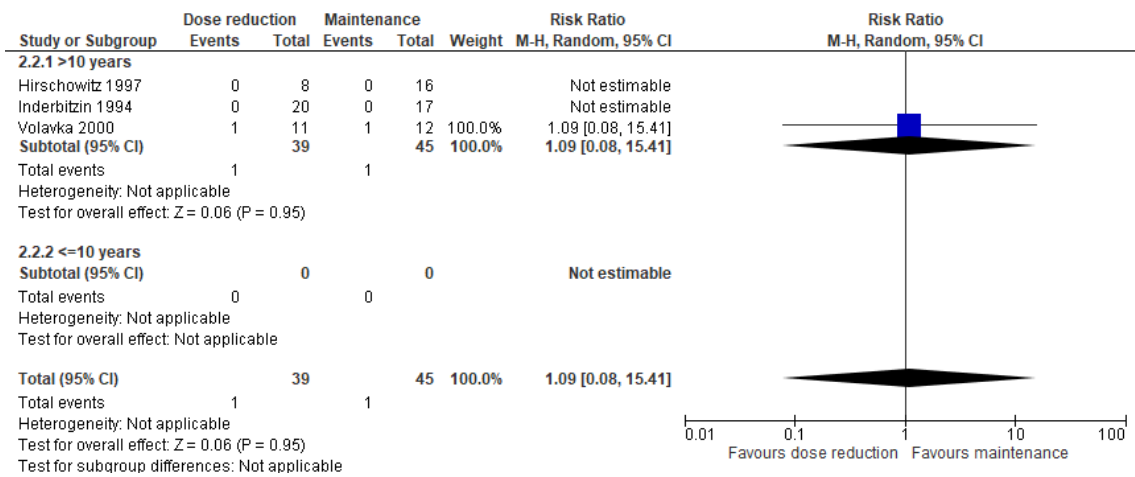


2. Study discontinuation

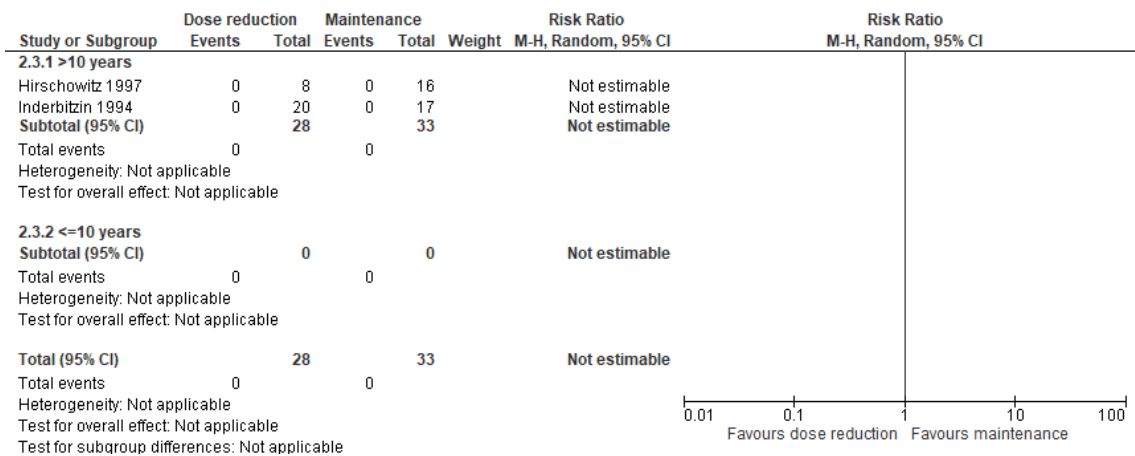
2.1 Study discontinuation due to all causes



2.2 Study discontinuation due to inefficacy

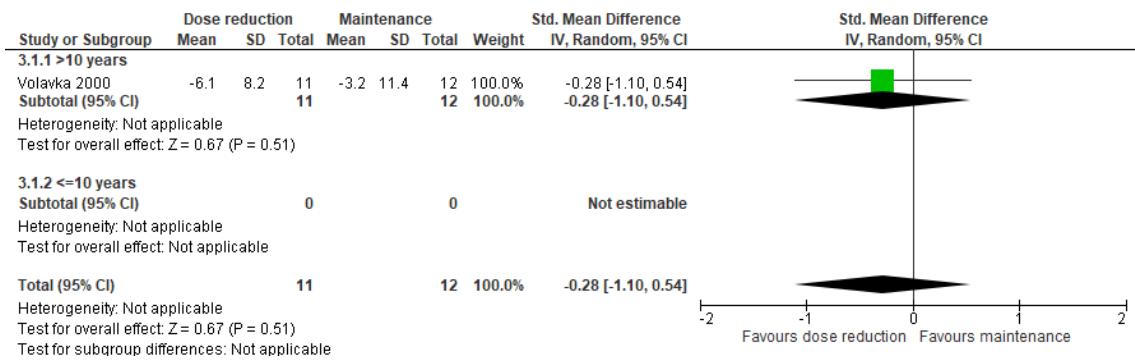


2.3 Study discontinuation due to intolerability

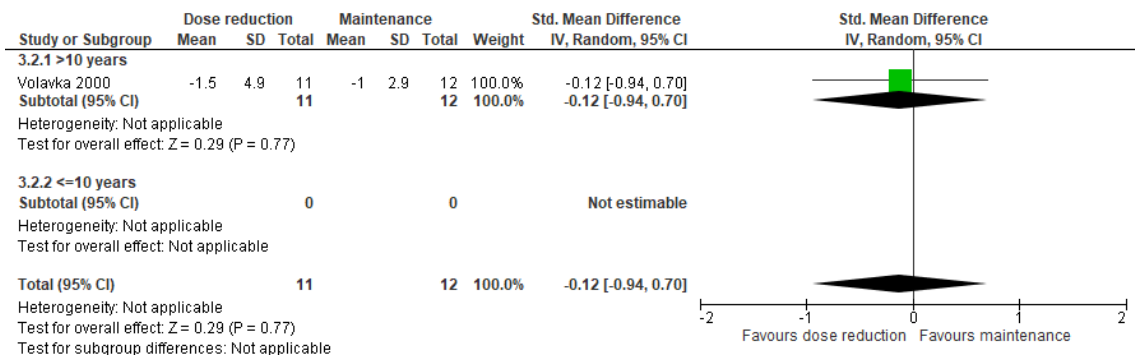


3. Psychopathology

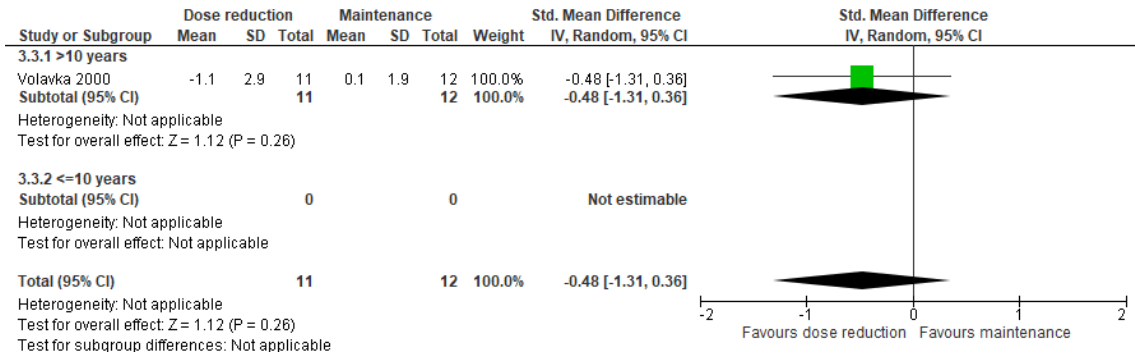
3.1 Total



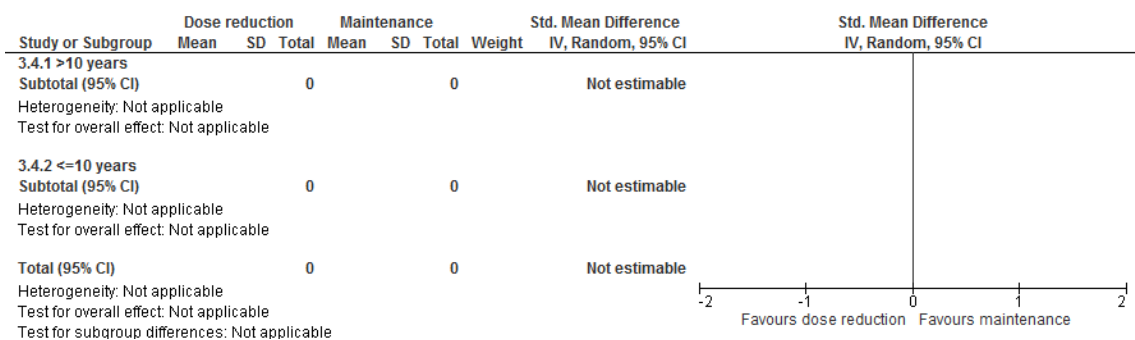
3.2 Positive symptoms



3.3 Negative symptoms

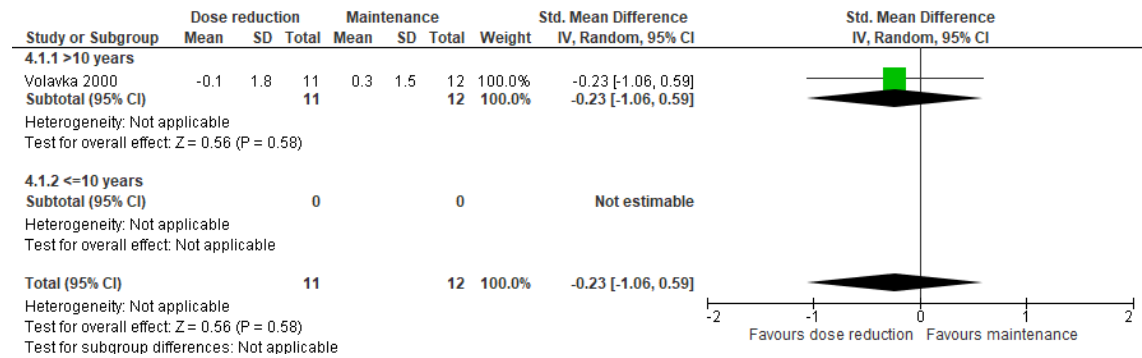


3.4 CGI-S

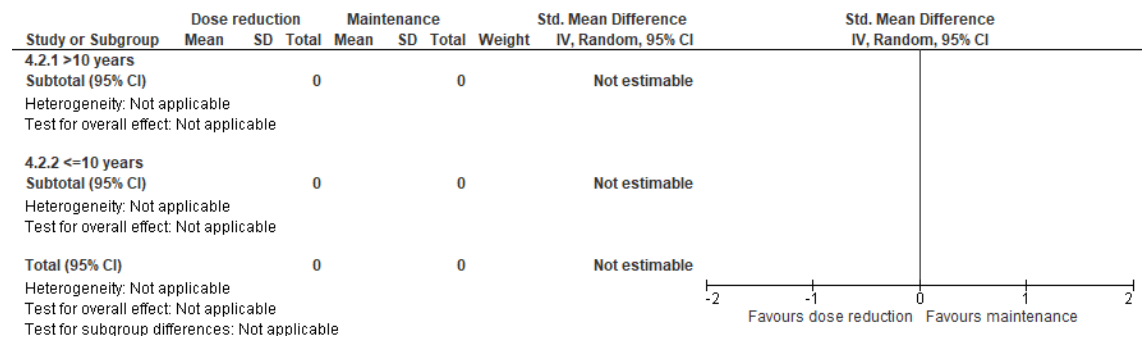


4. Adverse effects

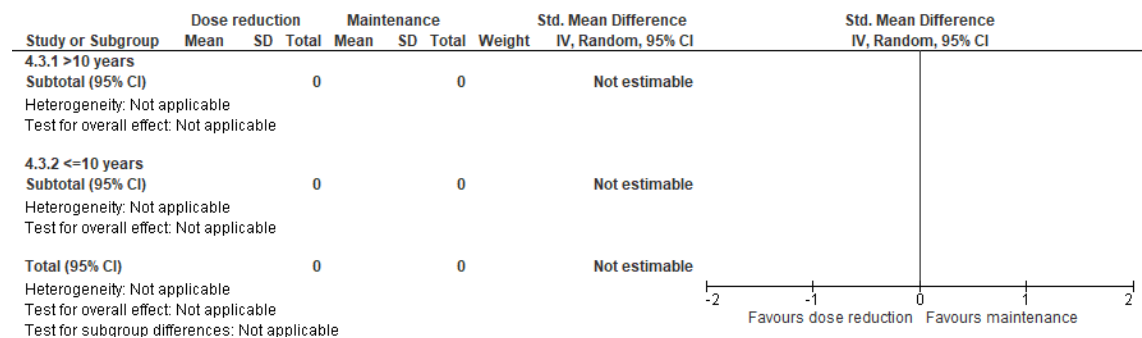
4.1 SAS



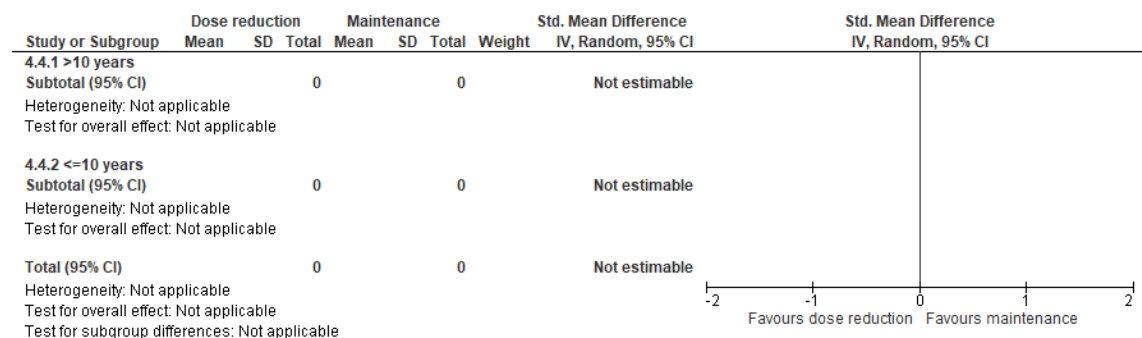
4.2 BARS



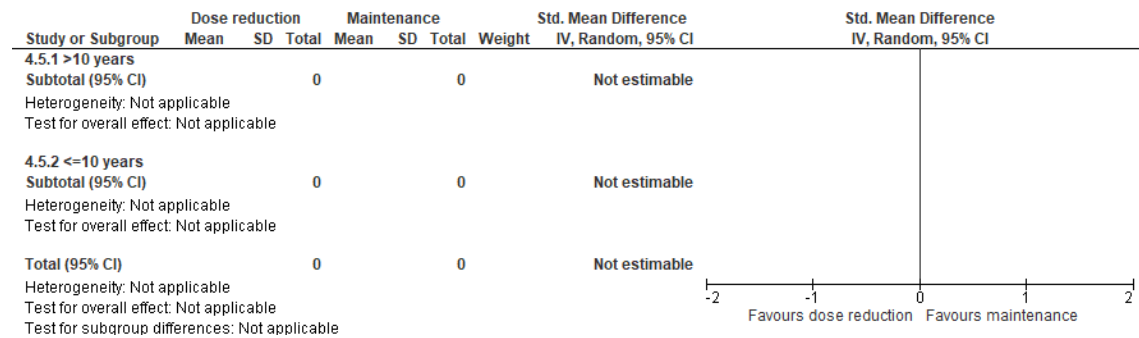
4.3 AIMS



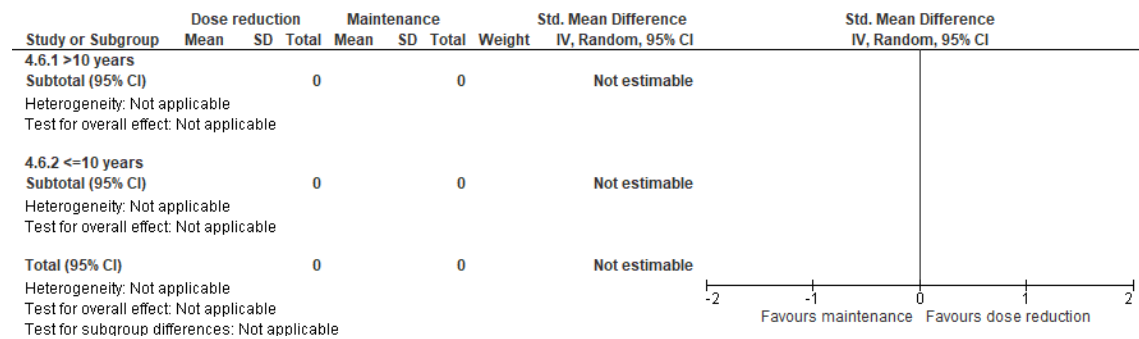
4.4 DIEPSS



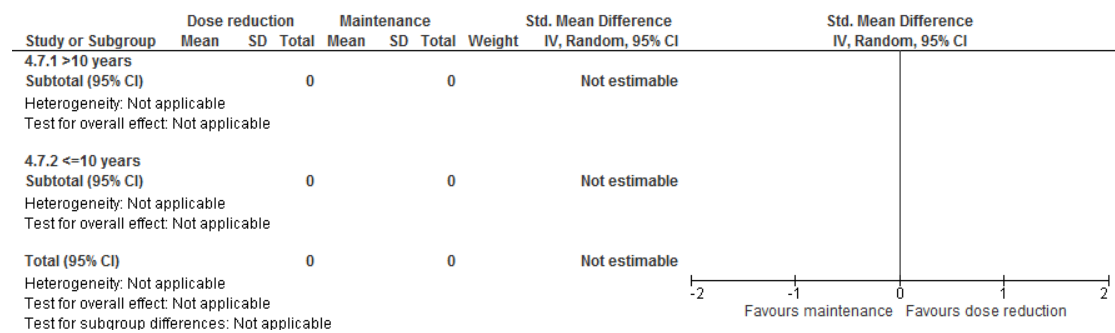
4.5 Body weight



4.6 Neurocognition



4.7 QOL

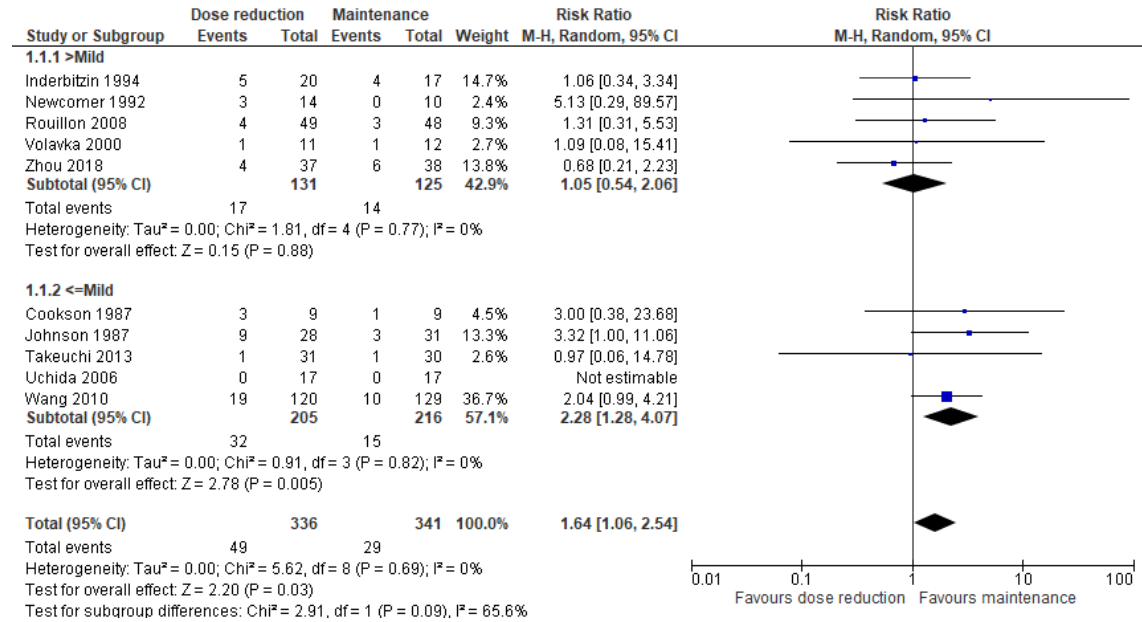


Abbreviations: AIMS, Abnormal Involuntary Movement Scale; BARS, Barnes Akathisia Rating Scale; CGI-S, Clinical Global Impressions – Severity scale; DIEPSS, Drug-Induced Extrapyrimal Symptoms Scale; QOL, quality of life; SAS, Simpson-Angus Scale

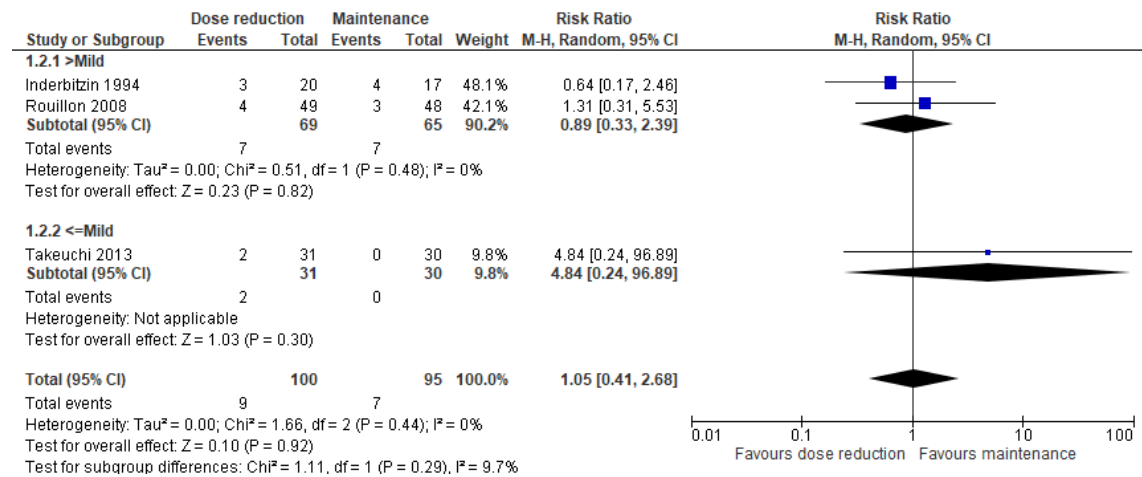
D. Mean symptom severity

1. Relapse/Hospitalization

1.1 Relapse (primary outcome)

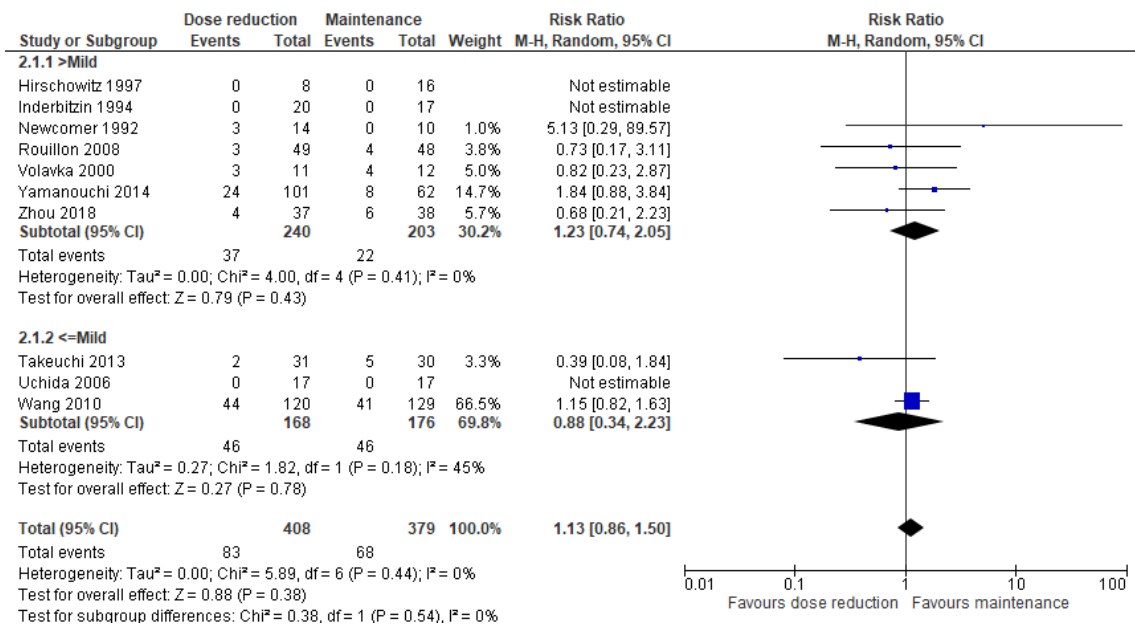


1.2 Hospitalization

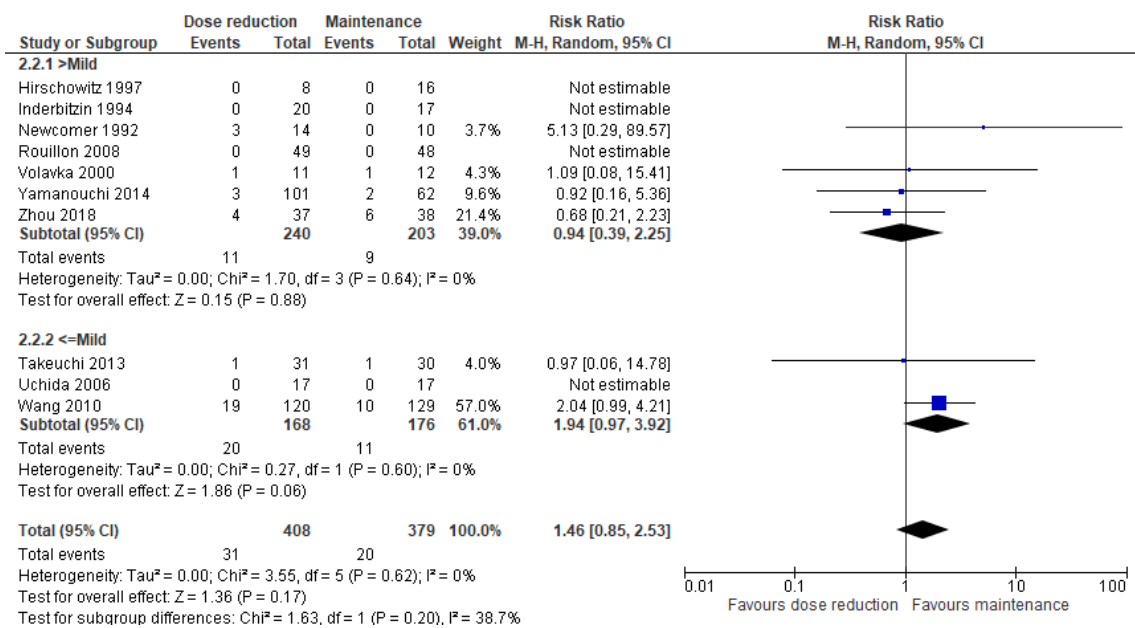


2. Study discontinuation

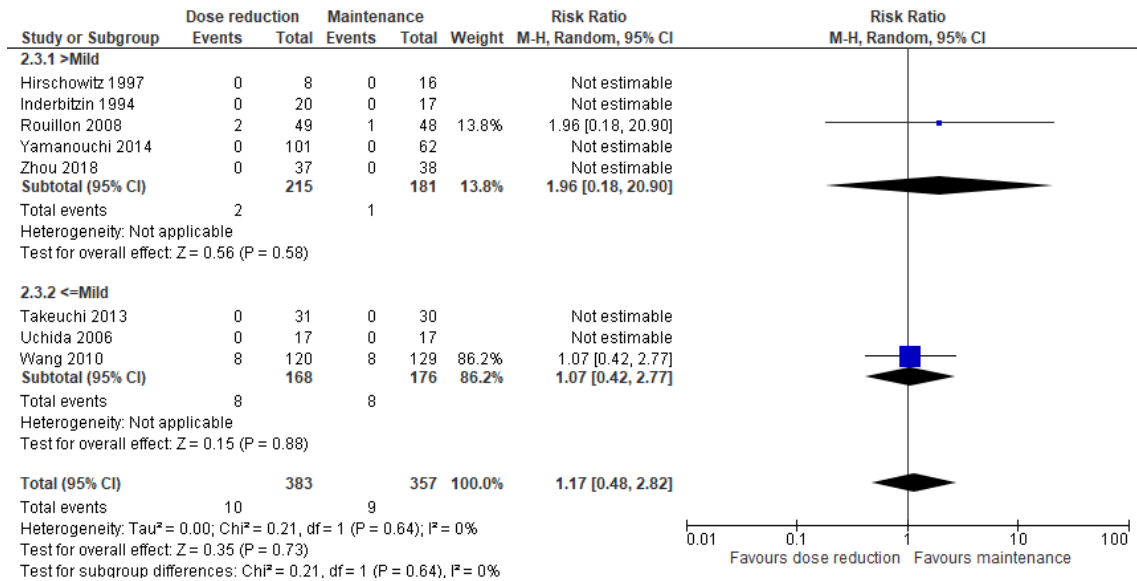
2.1 Study discontinuation due to all causes



2.2 Study discontinuation due to inefficacy

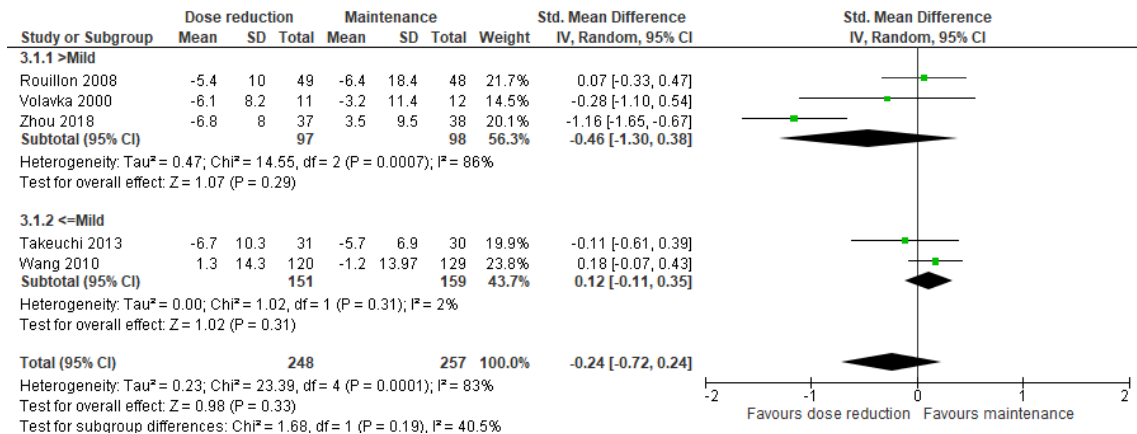


2.3 Study discontinuation due to intolerability

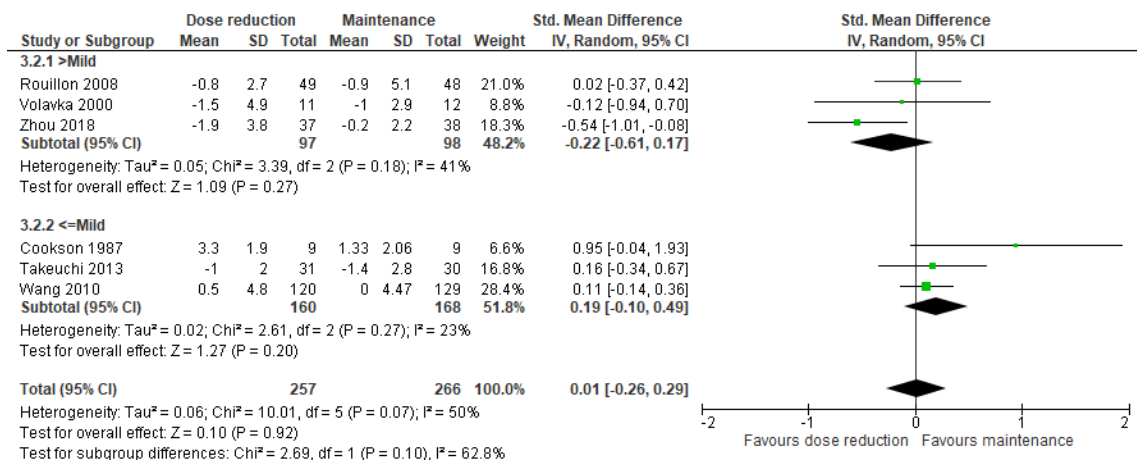


3. Psychopathology

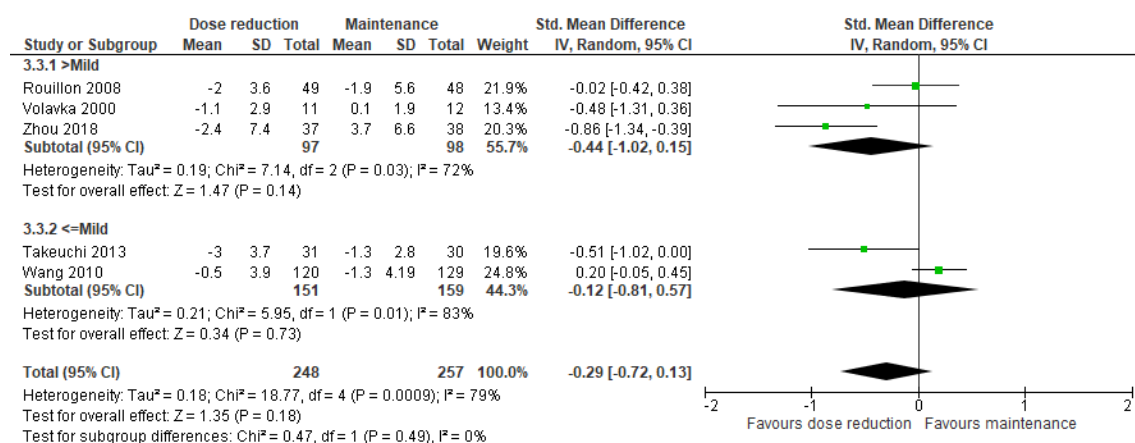
3.1 Total



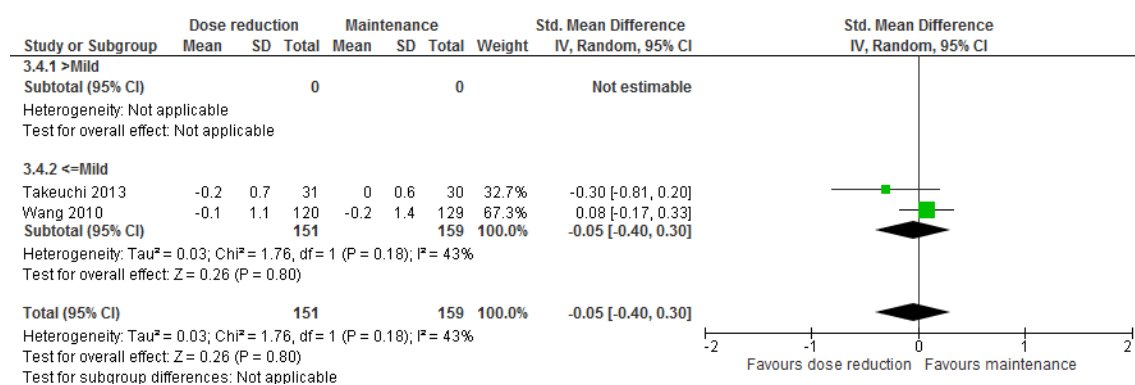
3.2 Positive symptoms



3.3 Negative symptoms

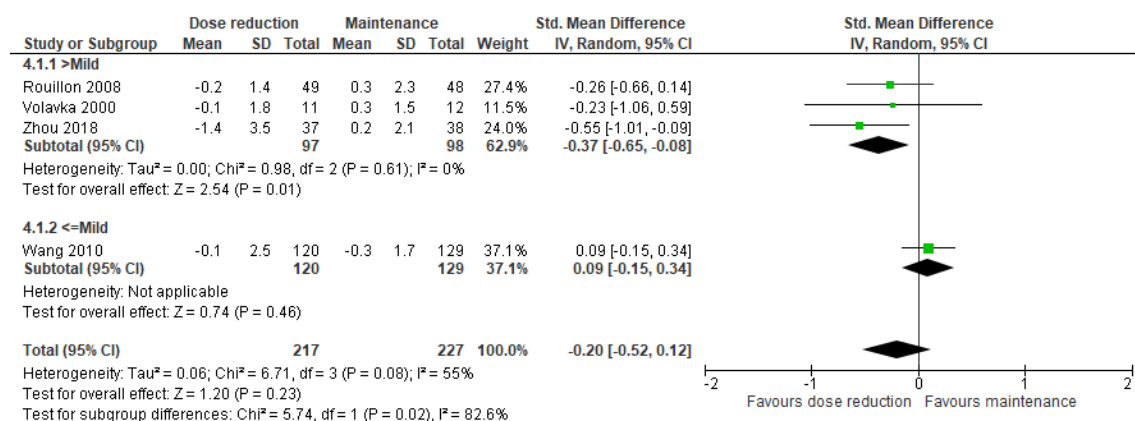


3.4 CGI-S

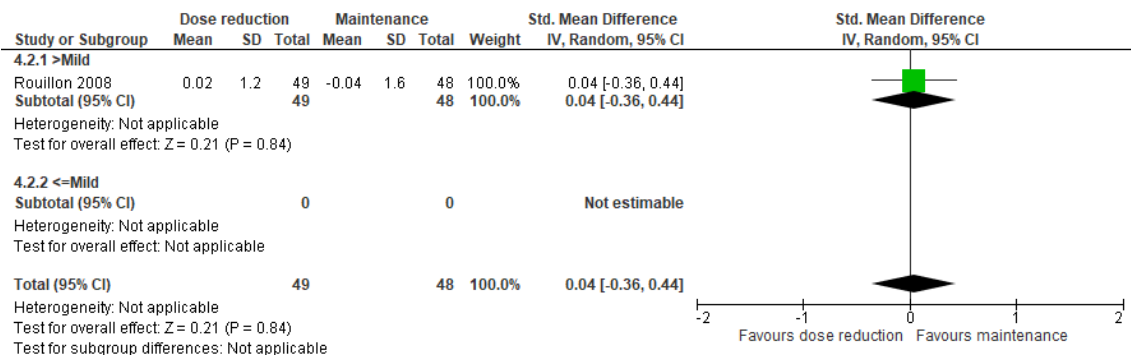


4. Adverse effects

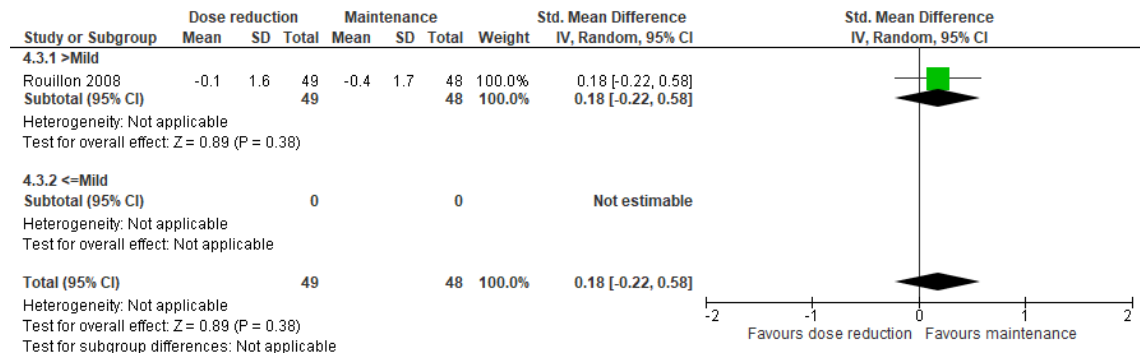
4.1 SAS



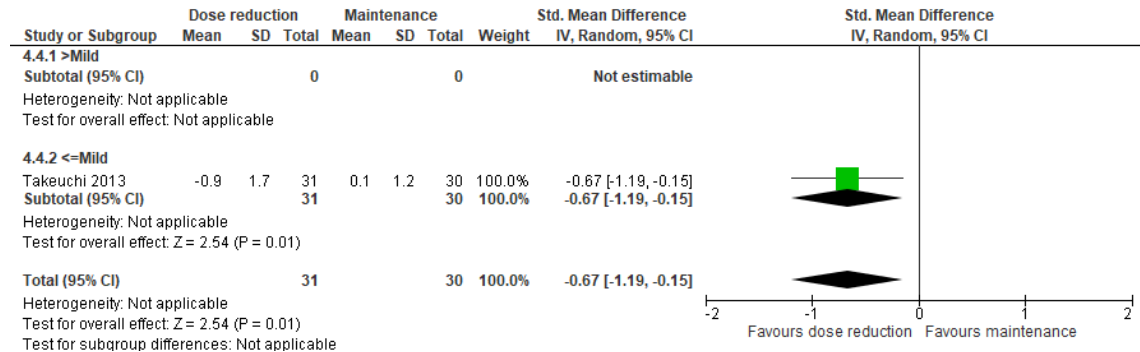
4.2 BARS



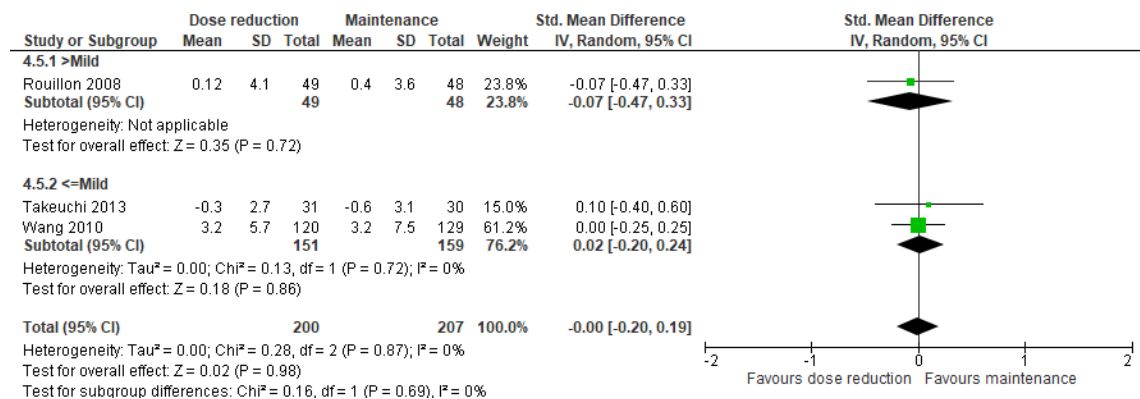
4.3 AIMS



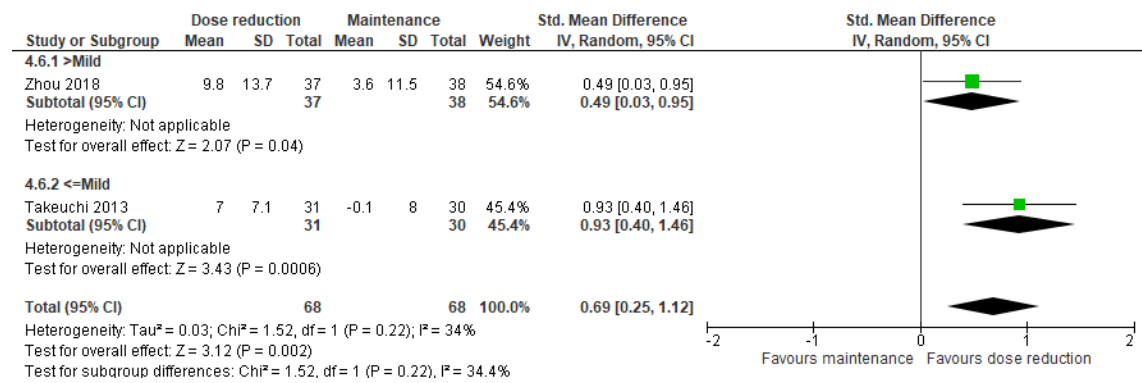
4.4 DIEPSS



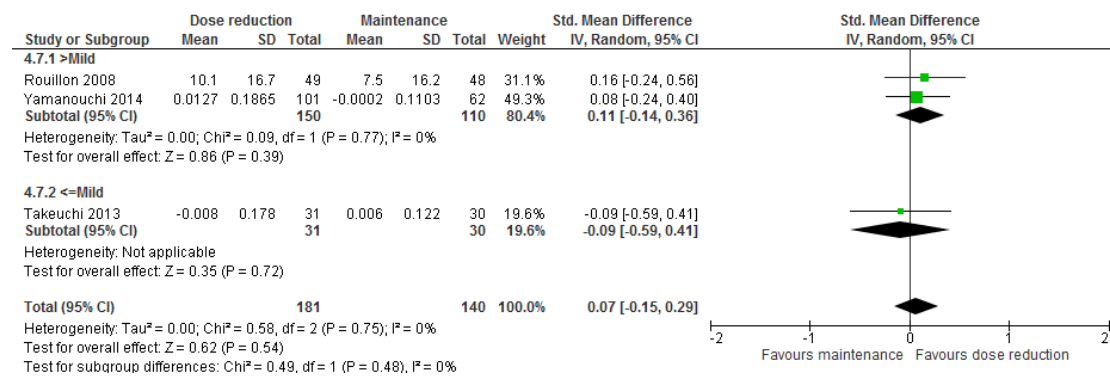
4.5 Body weight



4.6 Neurocognition



4.7 QOL



Abbreviations: AIMS, Abnormal Involuntary Movement Scale; BARS, Barnes Akathisia Rating Scale; CGI-S, Clinical Global Impressions – Severity scale; DIEPSS, Drug-Induced Extrapyrimal Symptoms Scale; QOL, quality of life; SAS, Simpson-Angus Scale