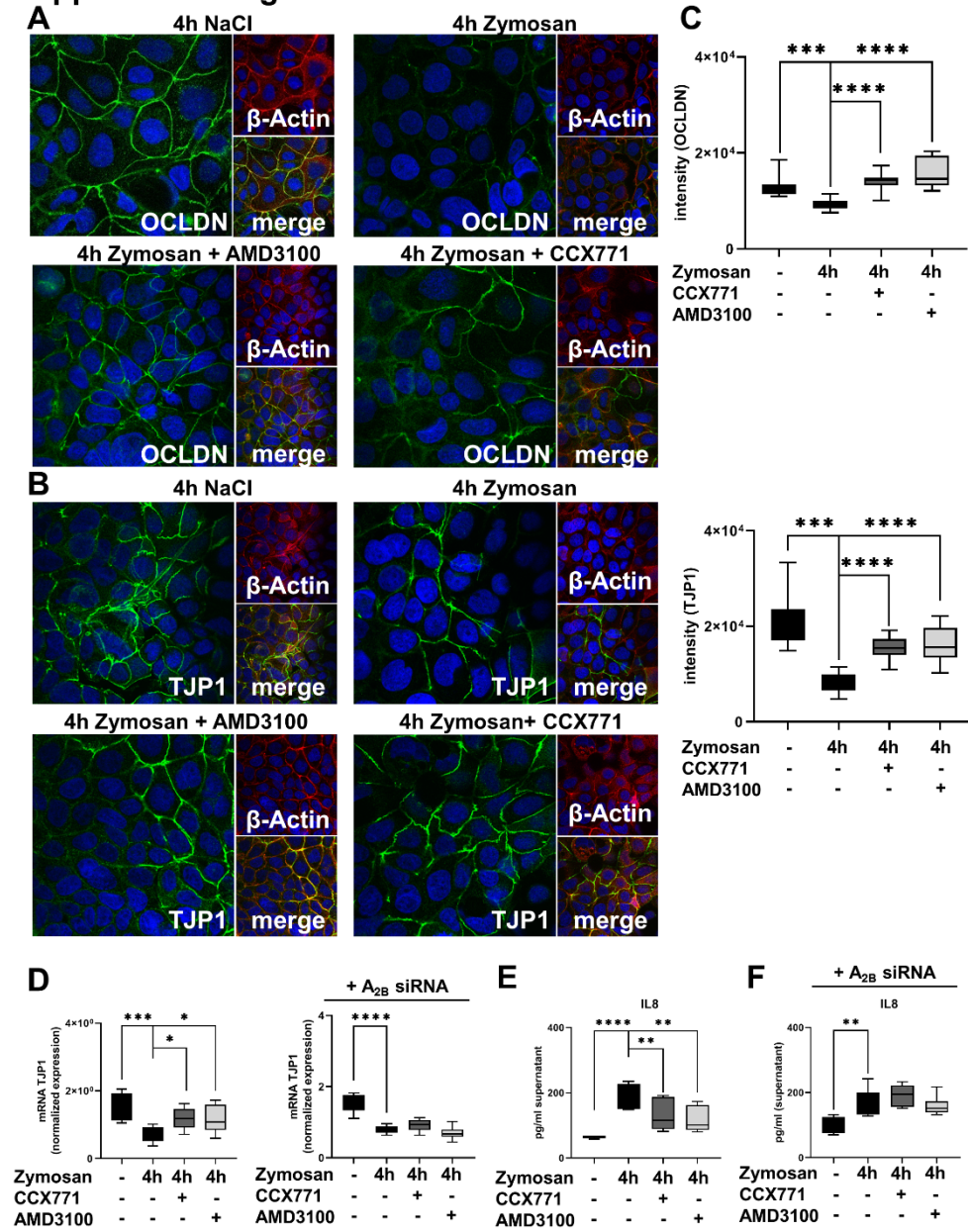
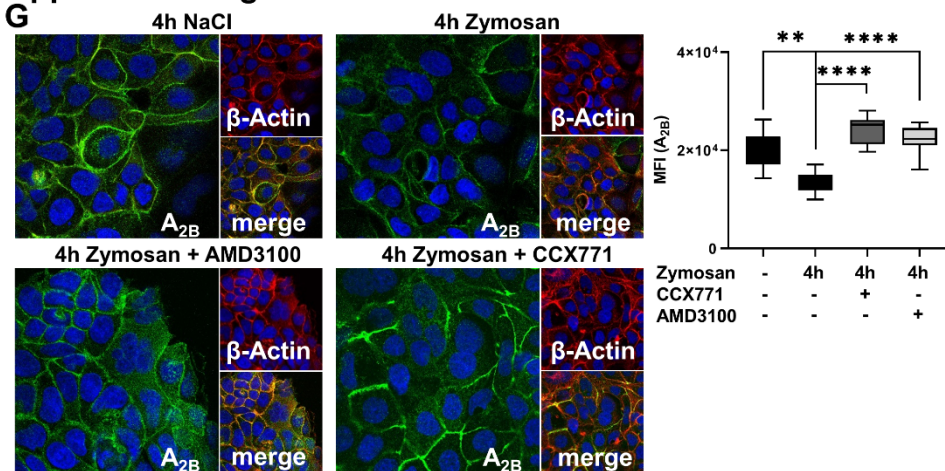


### Supplemental Figure 3



### Supplemental Figure 3



**Supplemental Figure 3. Effects of the CXCR4 and CXCR7 blockade on epithelial integrity of human intestinal cell line CaCo2.** **A)** Expression of occludin (OCLDN; green) and **B)** tight junction protein 1 (TJP1; green) in human epithelial CaCo2 cells ( $\beta$ -Actin; red) four hours after NaCl or zymosan with or without AMD3100 or CCX771 (63x original magnification). Images are representatives of n=3 experiments. **C)** Fluorescence intensity of occludin and TJP1 was measured at indicated conditions by using ImageJ (n=8-12). **D)** TJP1 expression and the effects of CXCR4 and CXCR7 inhibition without and after adenosine receptor  $A_{2B}$  knock down was evaluated (n=6-8). **E)** The inflammation-related release of human IL8 from CaCo2 cells (n=6-8) and **F)** the effects of  $A_{2B}$ -siRNA were determined in cell supernatants at indicated conditions (n=4-8). **G)** Presentation of the surface expression of  $A_{2B}$  (green) in human CaCo2 cells ( $\beta$ -Actin; red) at indicated conditions (63x original magnification). Image are representatives of n=3 experiments. Fluorescence intensity was measured by using ImageJ (n=8-12). For statistical analysis, one-way ANOVA was used with Bonferroni post hoc test. Data are presented as box and whisker graph with error bars indicating the range from minimum to maximum value; \* p<0.05; \*\* p<0.01; \*\*\* p<0.001; \*\*\*\* p<0.0001.