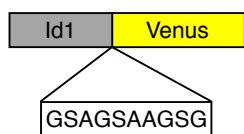


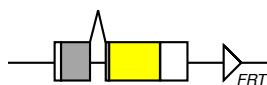
Lrig1 in Id1^{high} neural stem cells cultured in vitro

Adapted from Nam and Benezra, 2009

A Id1-VenusYFP fusion protein

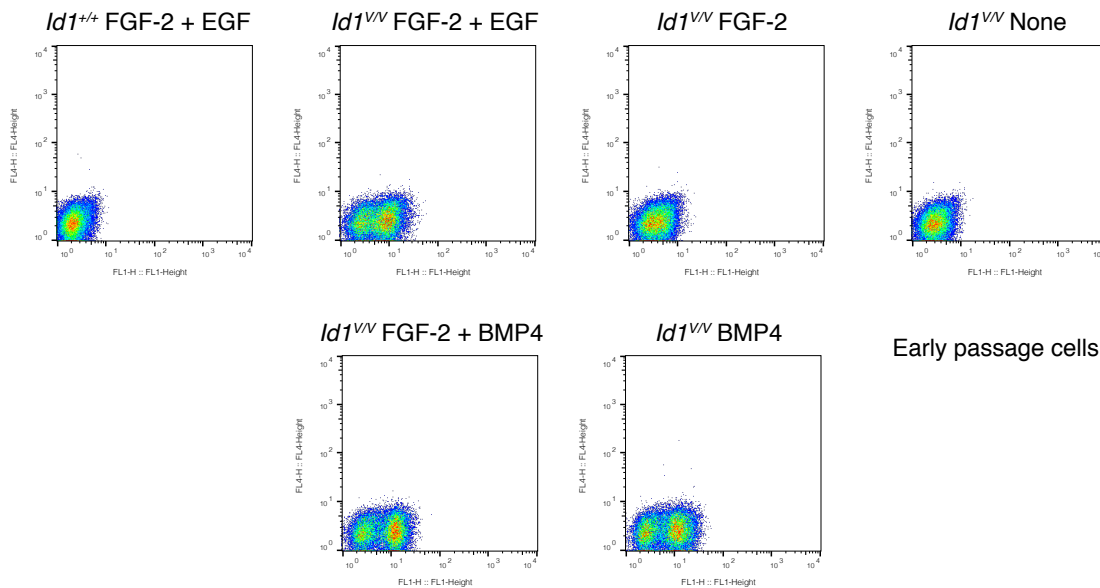


Id1^{Venus} knock-in allele

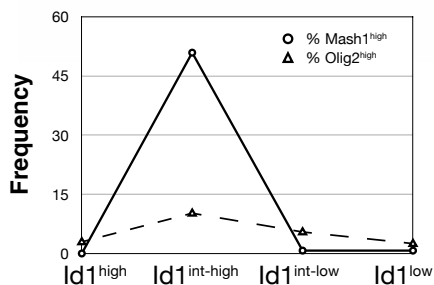


Establish NSPC cultures with unfractionated lateral wall cells of *Id1*^{Venus/Venus} mice using FGF-2 and EGF

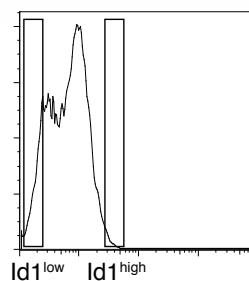
B The Id1-Venus signal in these cells responds to exogenous factors (~24 h after changing)



C Marker protein expression in cultured *Id1*^{VV} NSPC fractions (+FE)



D FACS sort of *Id1*^{high} fraction (+FE)



→ Microarray analyses of RNA from *Id1*^{high} and *Id1*^{low} fractions of *Id1*^{VV} NSPC cultured with FGF-2 + EGF
 → Transcripts >1.5-fold enriched in the *Id1*^{high} fraction
 → Candidate genes for further studies, *Lrig1*, *Cdk6*, *Clu*, etc

