

400

SUPPLEMENTARY MATERIAL

401 **Supplemental Figure 1. *Comparison of EF and LVESV progression from 4 to 6 weeks post***

402 ***MI.*** Intervention at 4 days post-MI slows progression towards HF compared to 2 weeks by better
403 preserving EF and preventing LV dilation.

404 **Supplemental Figure 2. *Representative IHC panel for scar and borderzone regions of***

405 ***STG+EV treatments groups 4 weeks post-MI.*** Populations of cardiomyocytes (troponin T) and
406 cardiac fibroblasts (vimentin) were studied in sections of infarcted hearts at 4 weeks post-MI
407 with the designated treatment group. Intervention at 4 days post-MI had the greatest myocyte
408 preservation within the infarcted region compared to other treatment groups. Images were
409 visualized under 20x magnification.

410 **Supplemental Figure 3. *IVC occlusion yields changes in pressure-volume loops that yield end***

411 ***systolic pressure-volume relationship (ESPVR).*** The slope of ESPVR is the end systolic

412 elastance (E_{es}), a volume-independent measure of contractility

413

414

415

Figure E1

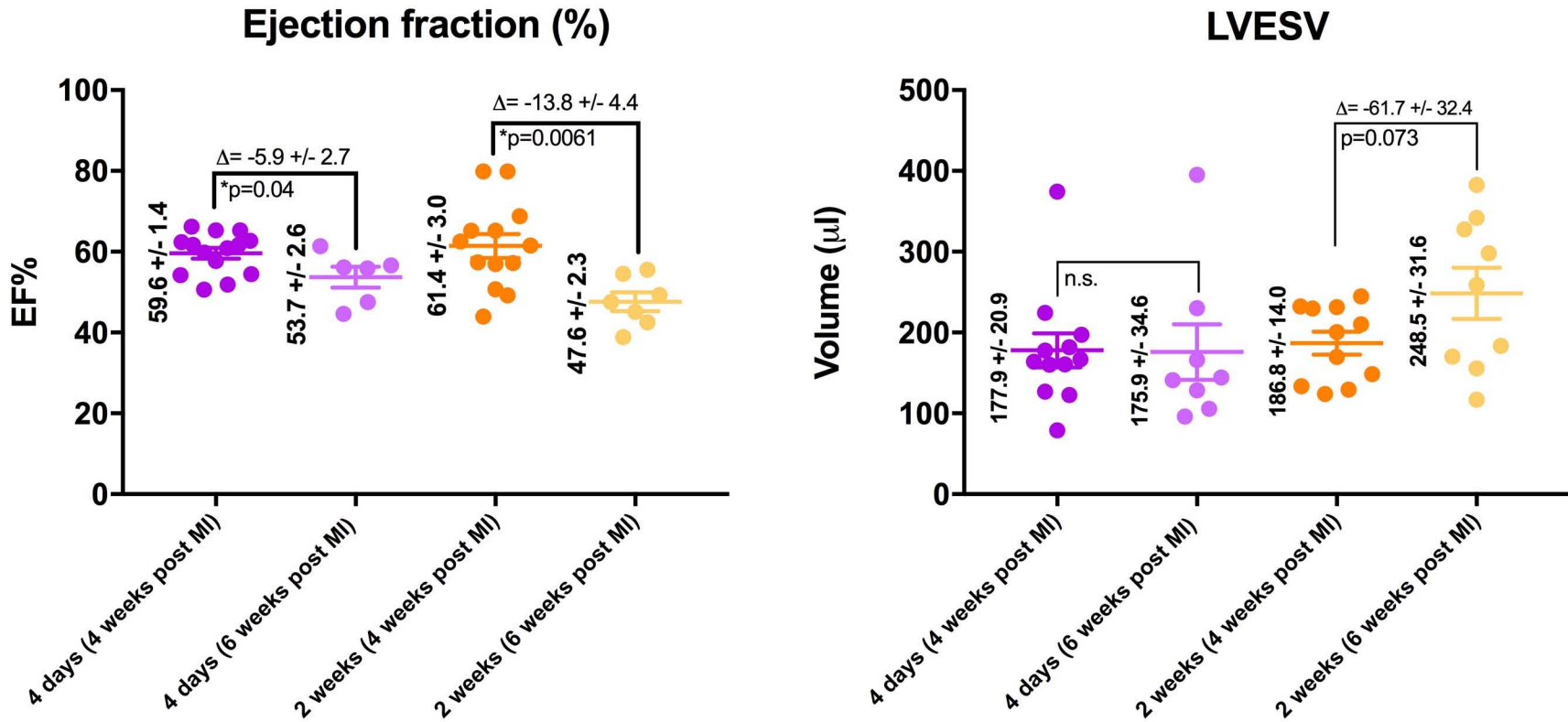


Figure E2

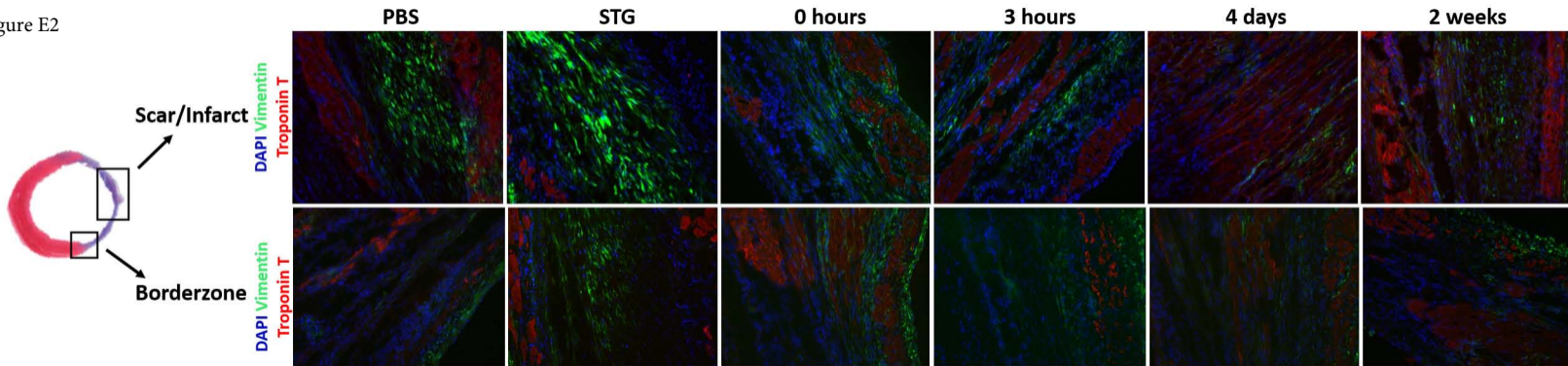
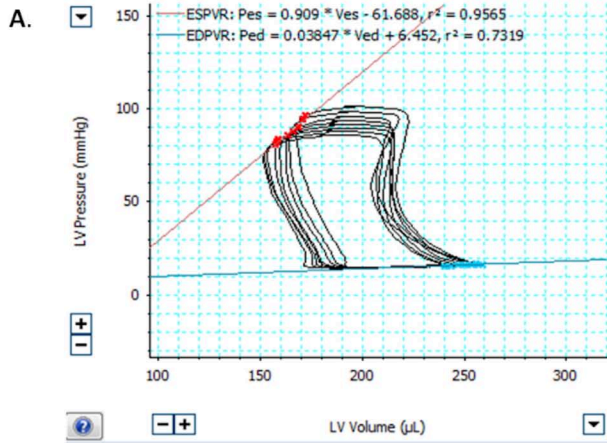
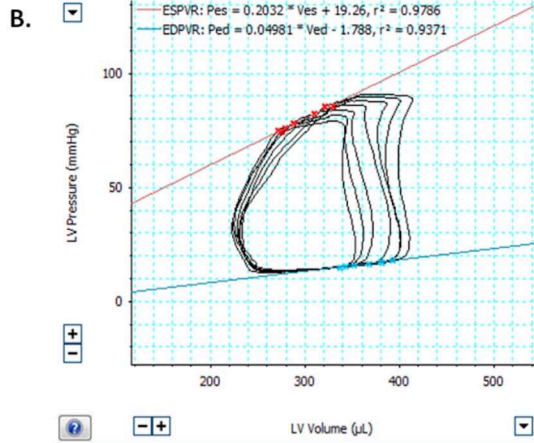


Figure E3



4 day



PBS control