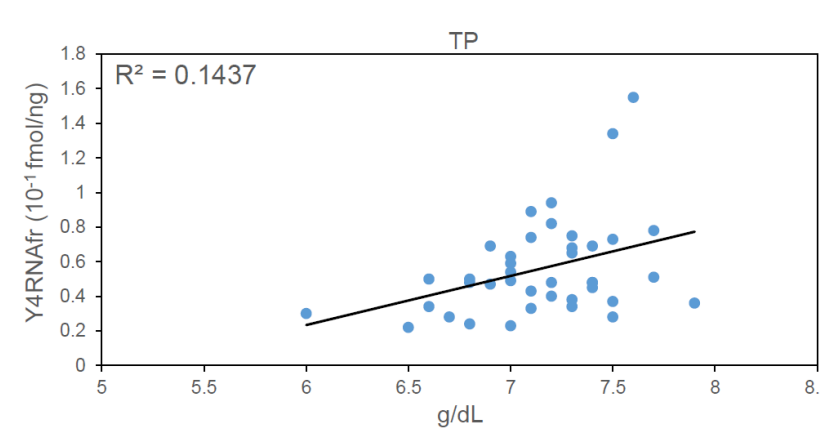
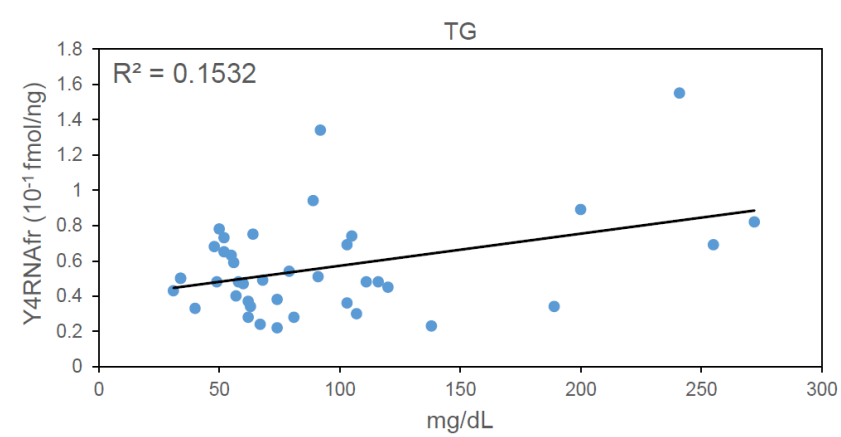
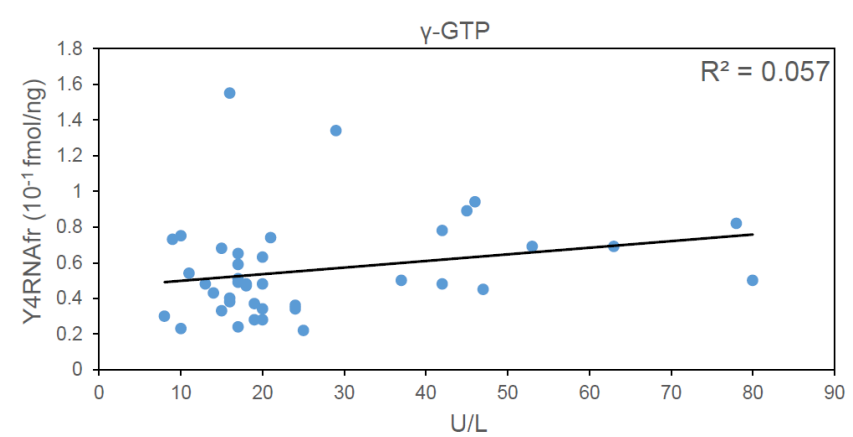
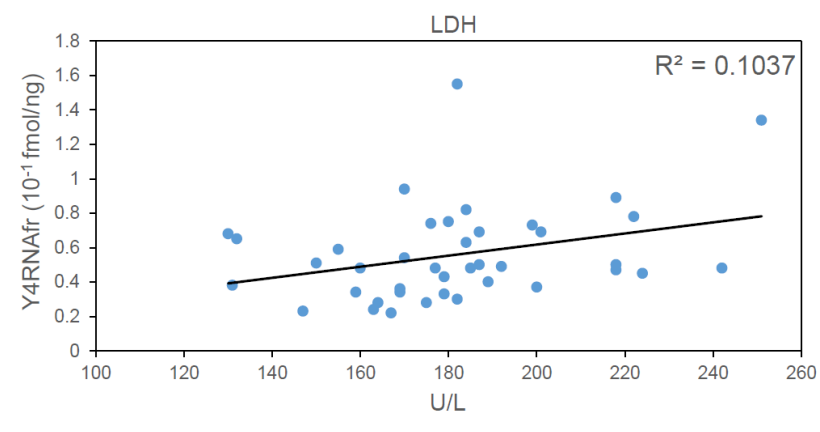
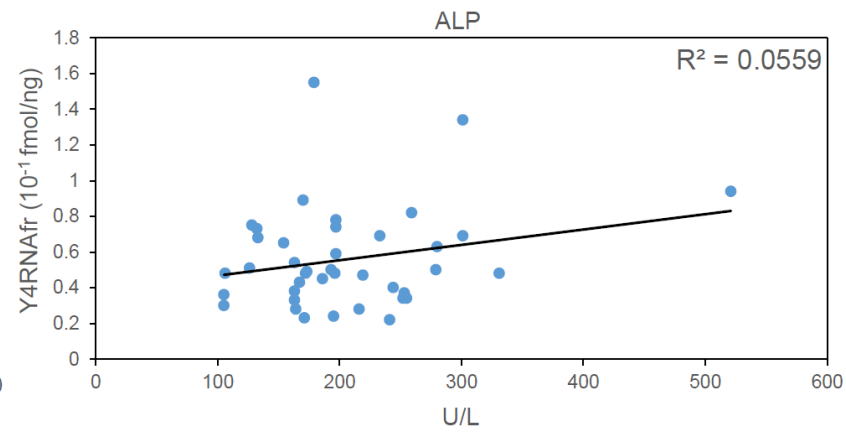
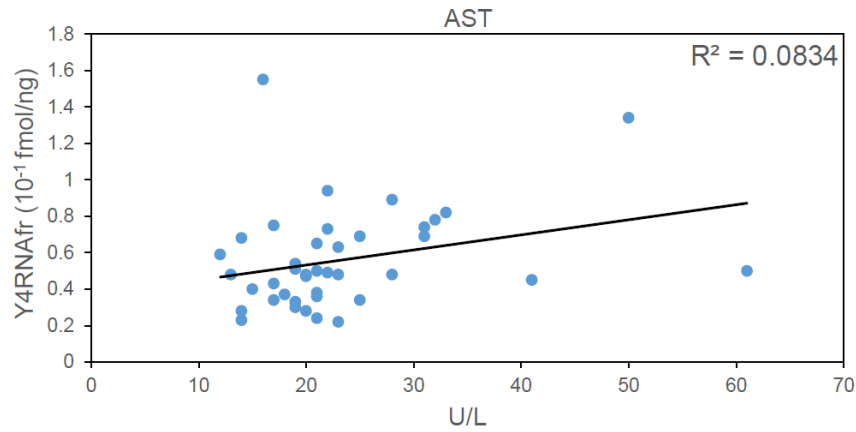
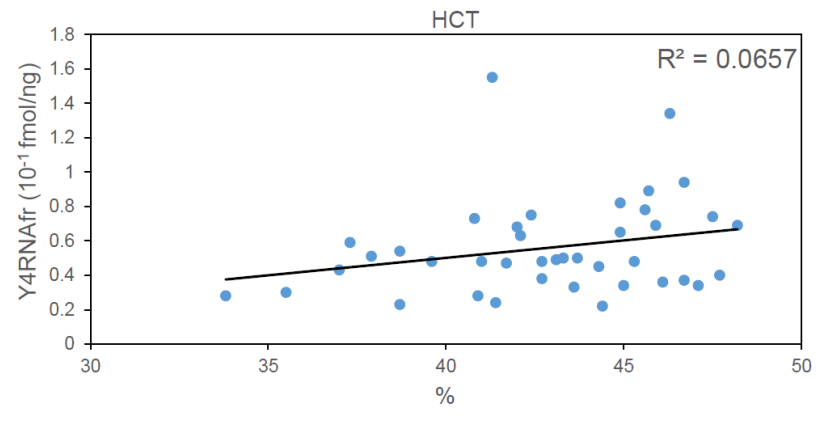
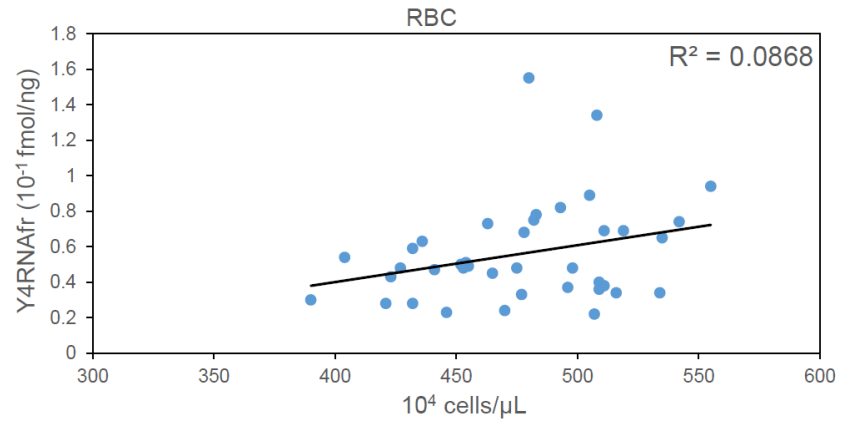
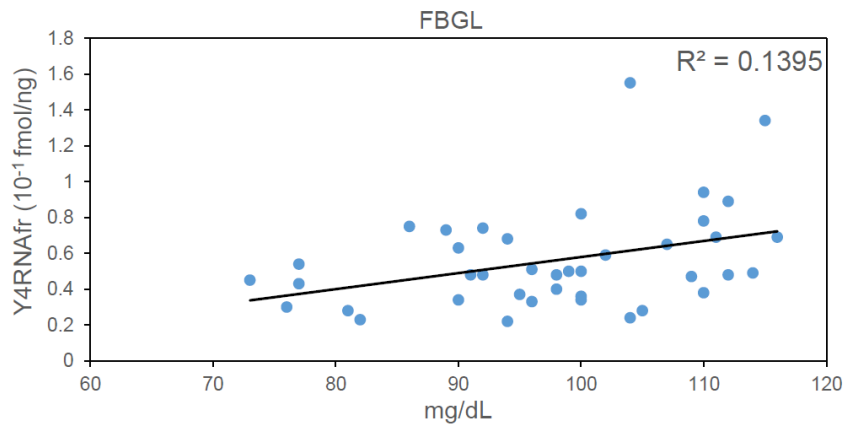
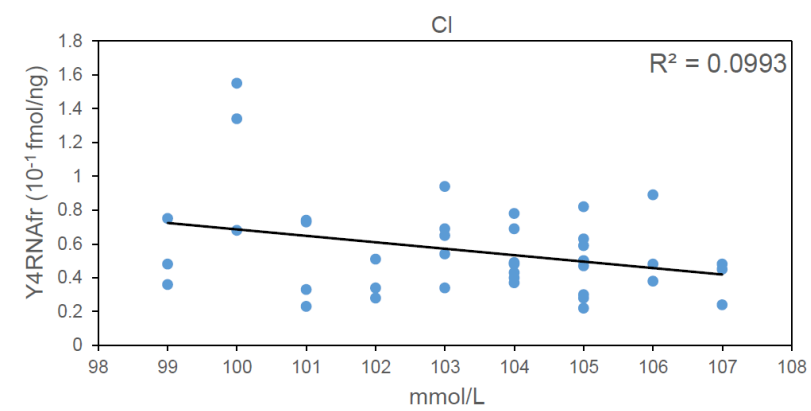
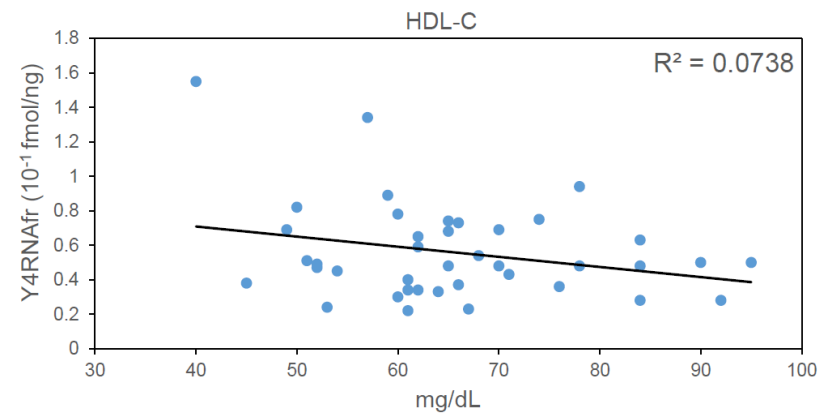
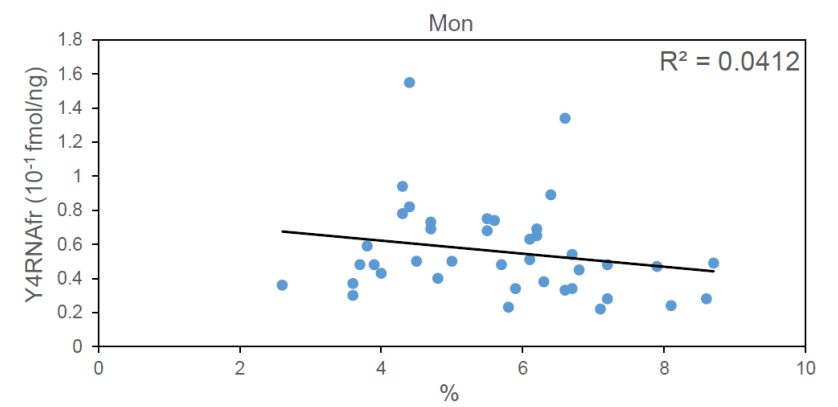
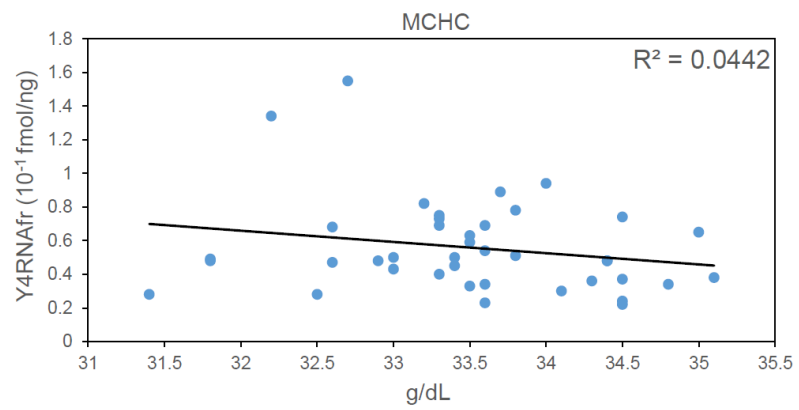
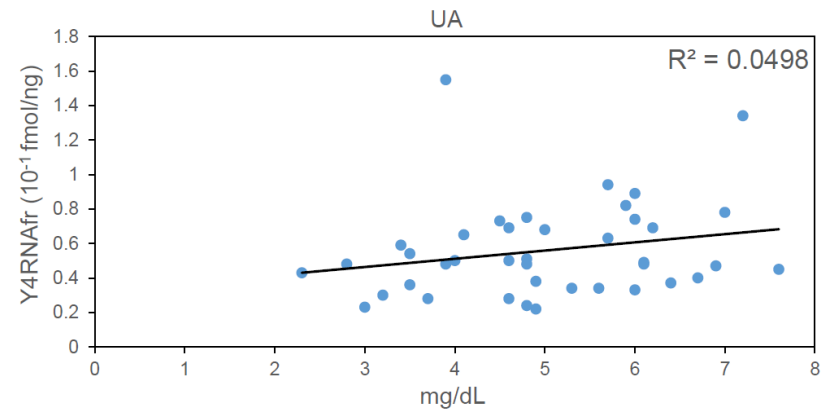


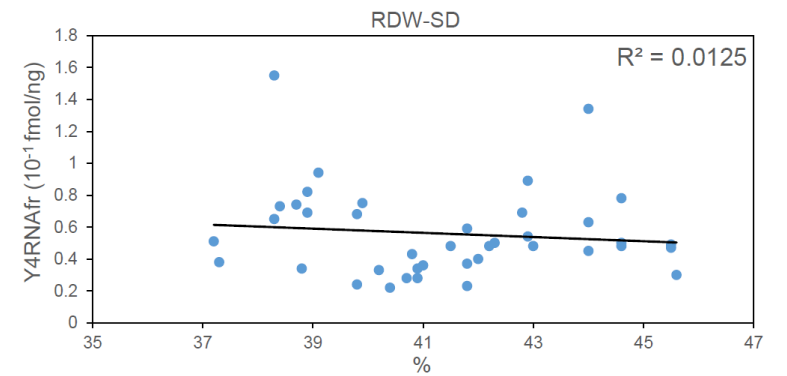
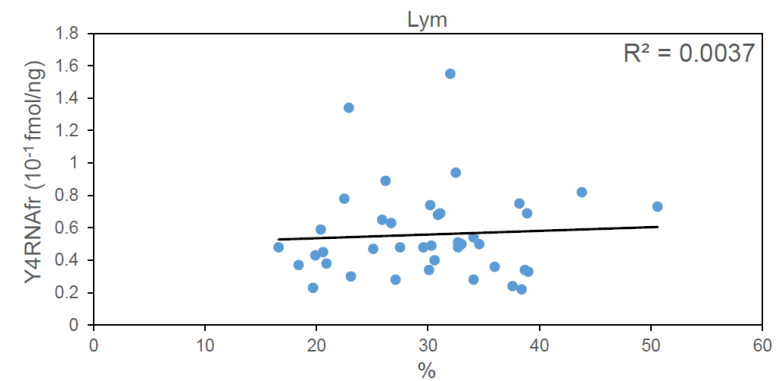
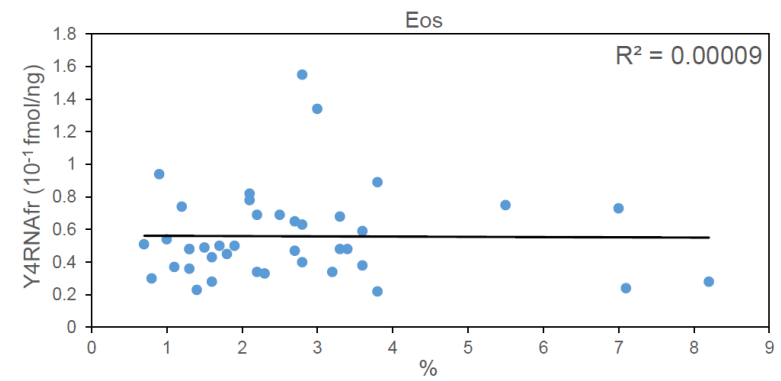
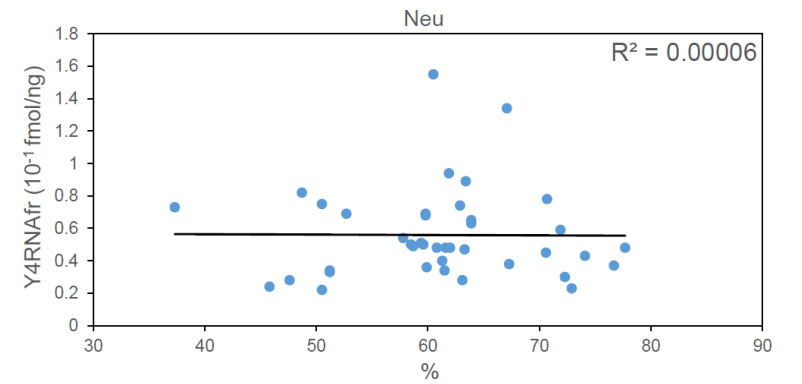
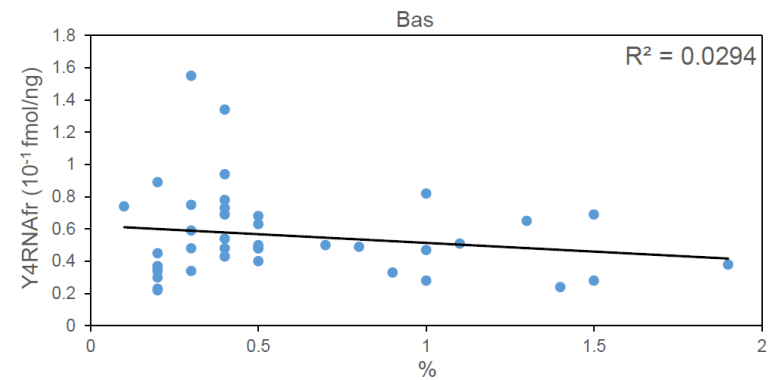
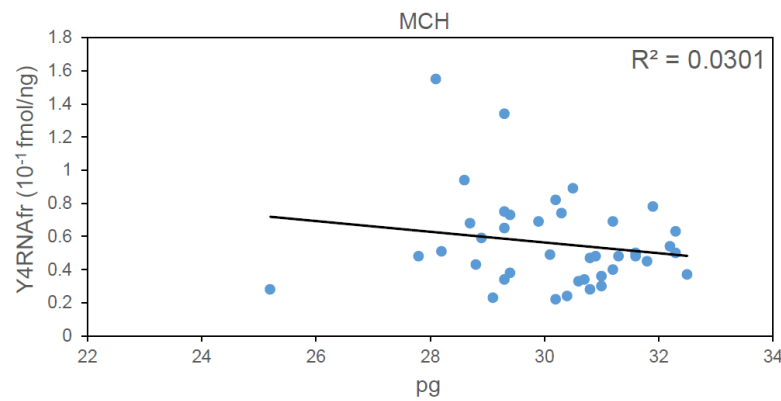
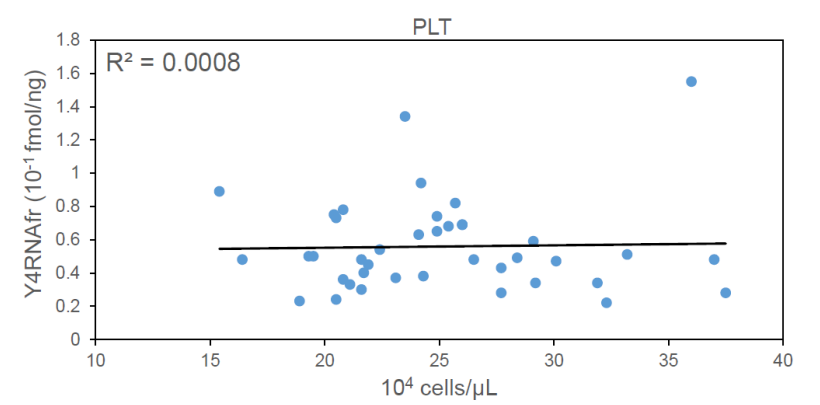
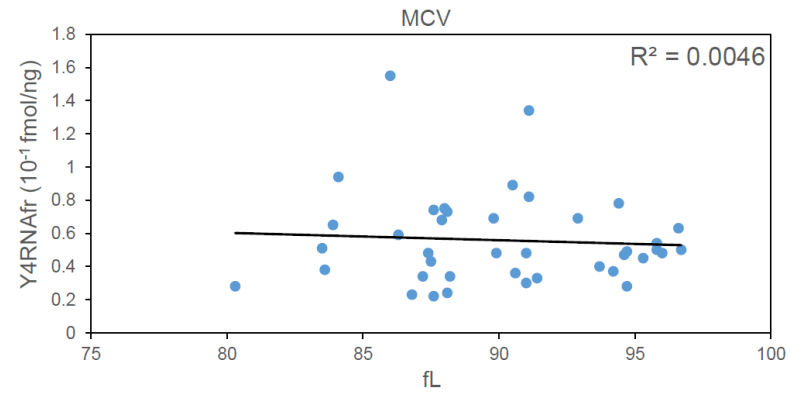
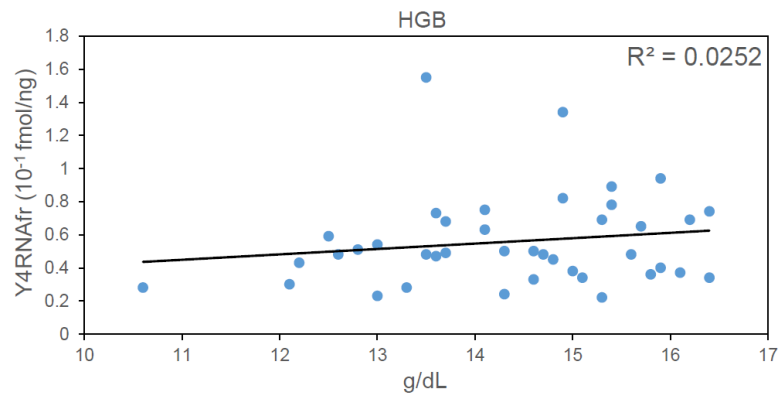
Supplementary Figure S1A



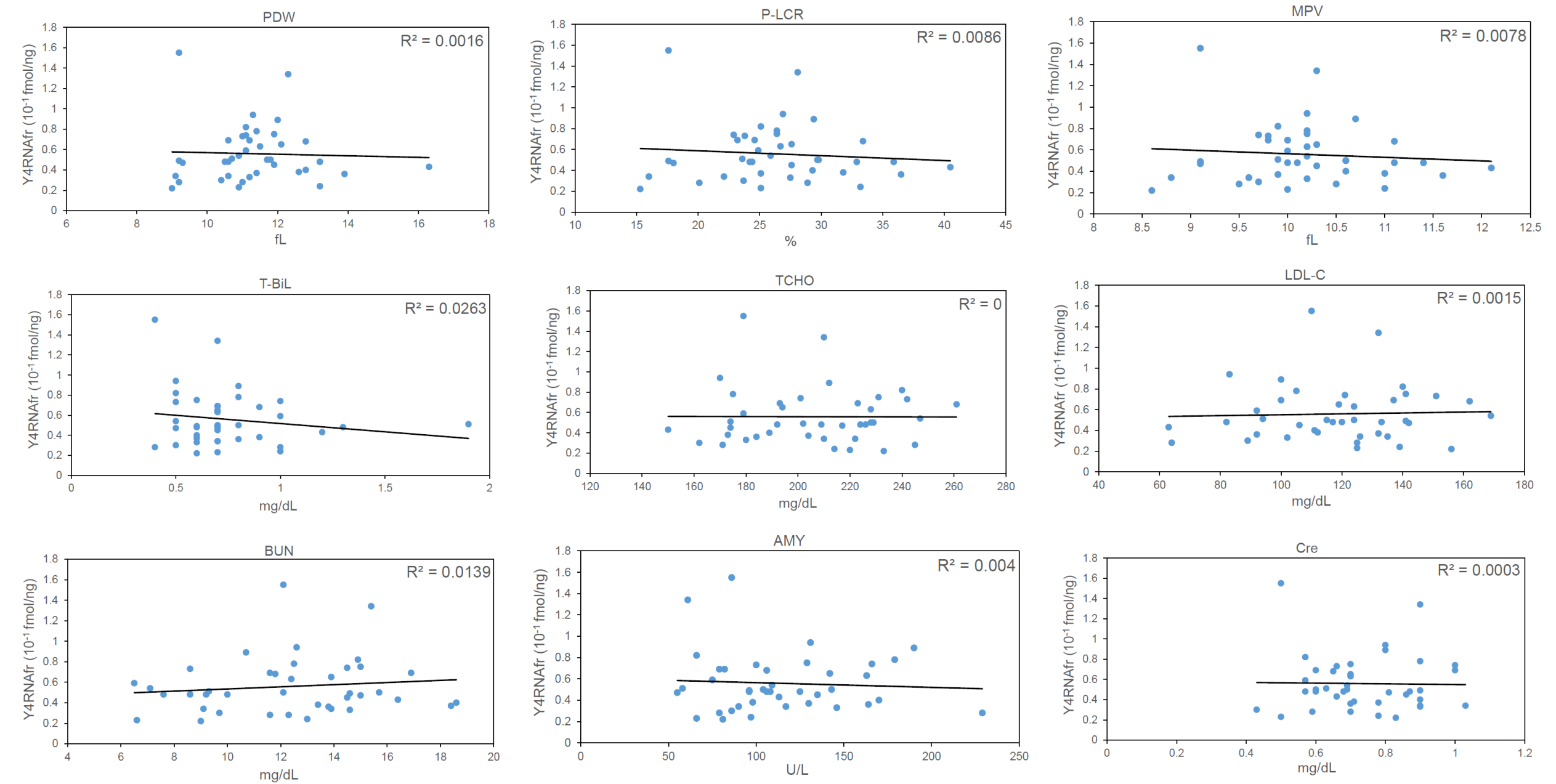
Supplementary Figure S1A



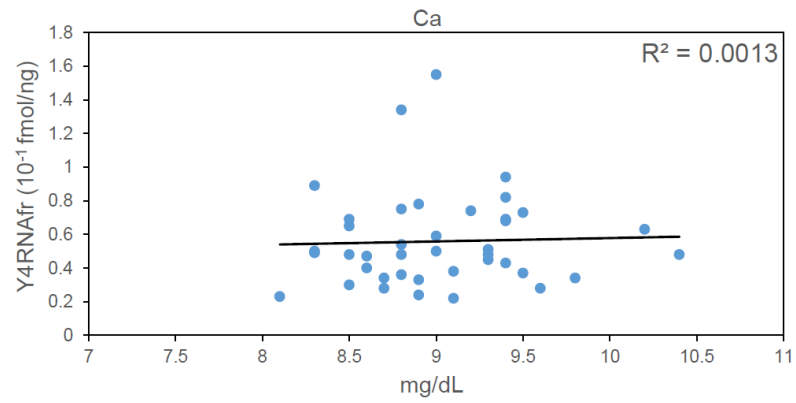
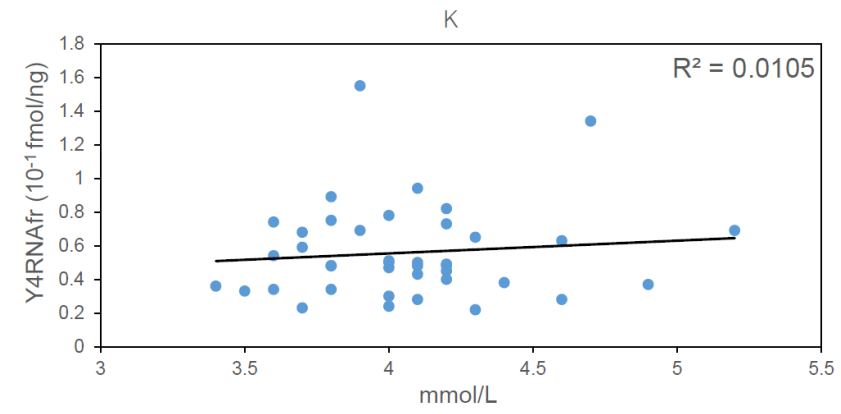
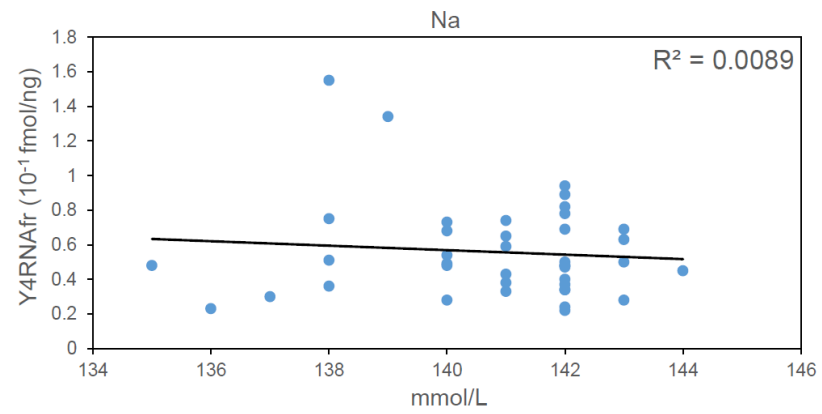
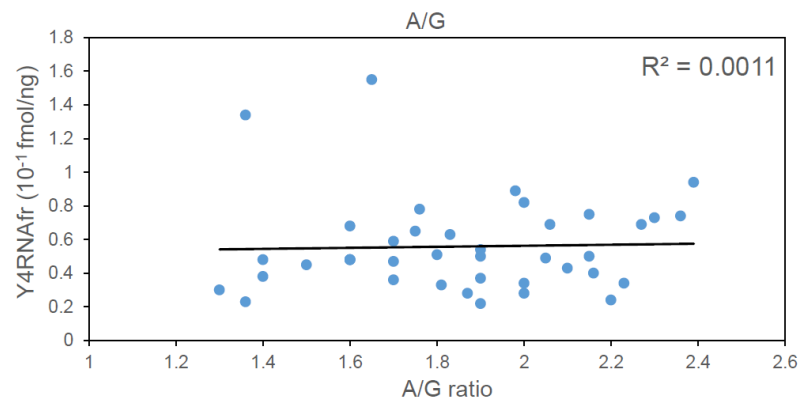
Supplementary Figure S1B



Supplementary Figure S1B



Supplementary Figure S1B



Supplementary Fig. S1. Correlations of the Y4RNAfr level in peripheral blood plasma with the levels of 36 test items in blood. (A) Weak positive correlations with the levels of FBGL, RBC, HCT, AST, ALP, LDH, γ -GTP, TG, TP, and UA, and weak negative correlations with the levels of MCHC, Mon, HDL-C, and Cl are observed. (B) Correlations with the levels of the other 22 test items are shown. R, correlation coefficient.