

Supplementary Figure 1

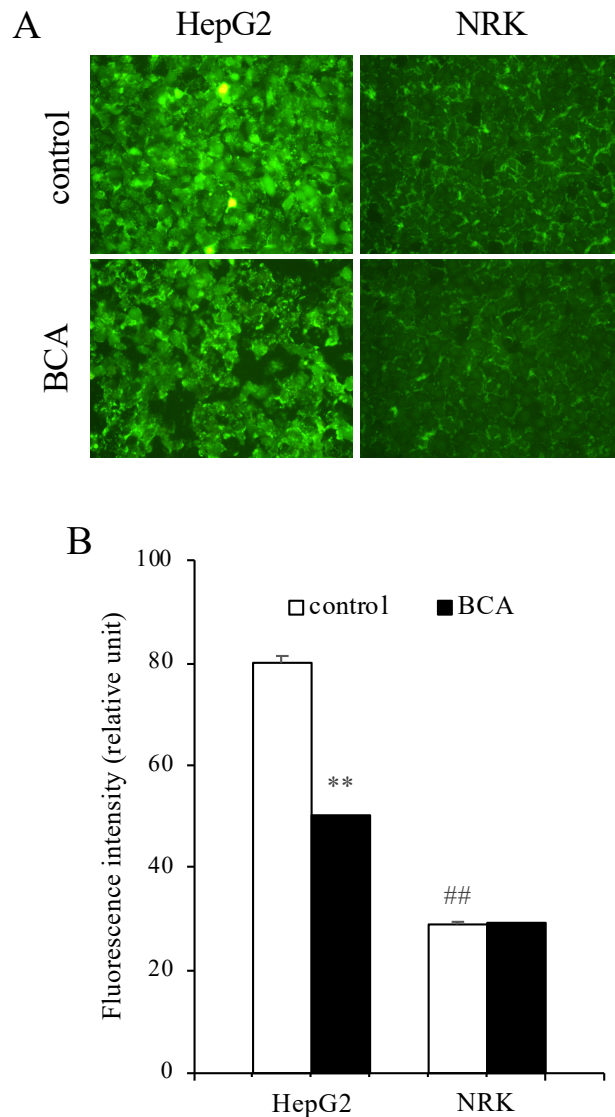


Fig. S1 Comparison of H₂S production between HepG2 and NRK cells. (A) Fluorescent images of HepG2 and NRK cells after incubation with HSip-1 DA. HepG2 and NRK cells were incubated with or without 2 mM BCA for 12 h. Afterward, cells were incubated with H₂S detection probe HSip-1 DA (5 μ M) for 30 min. After washing out the probe, cells were maintained in HBSS and photographed (magnification: \times 400). (B) Quantification of relative fluorescence intensity using ImageJ software. Data shown are mean \pm S.E. (n = 25), ** P < 0.01 vs. control, ## P < 0.01 vs. HepG2 cells.