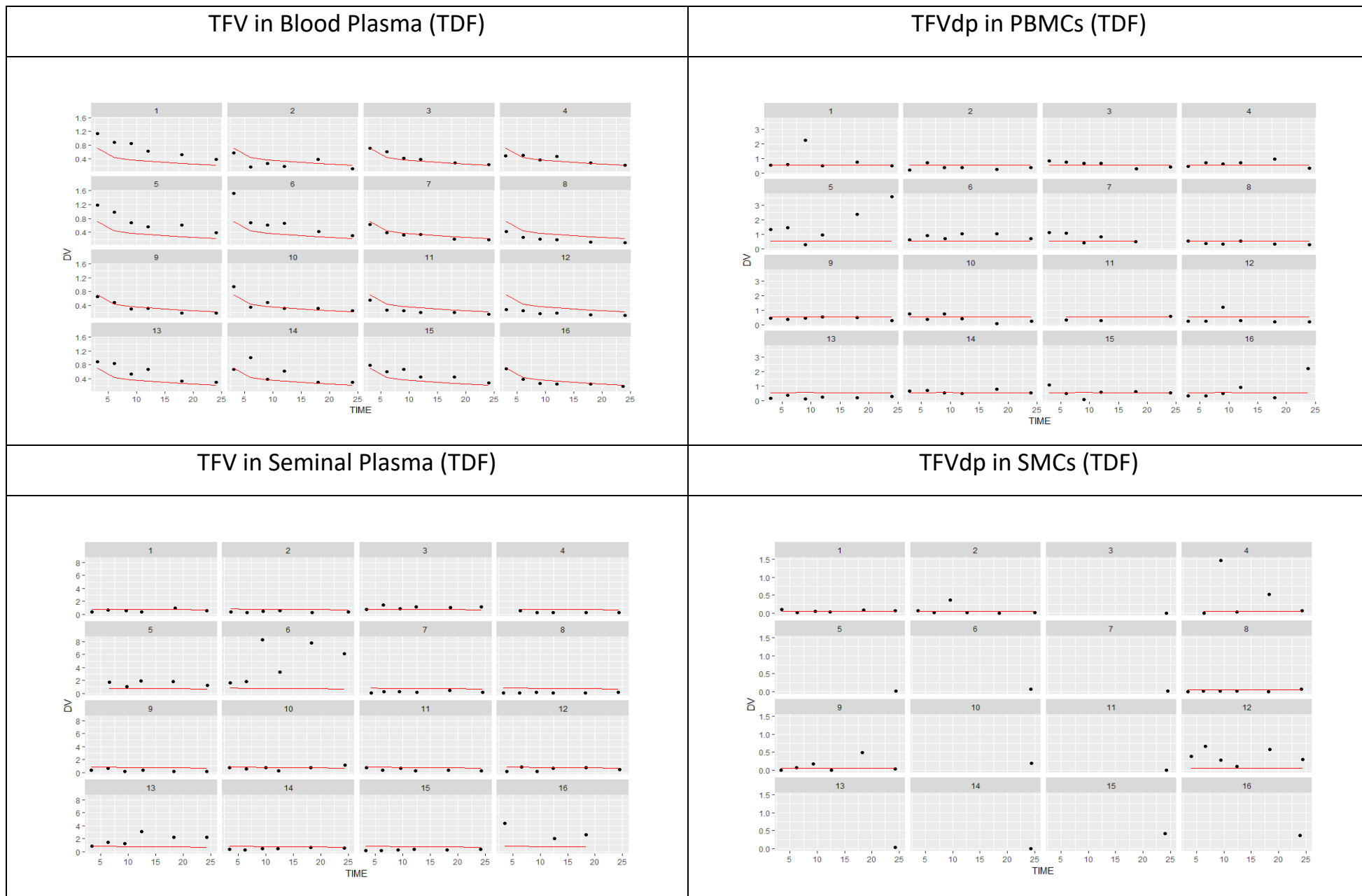


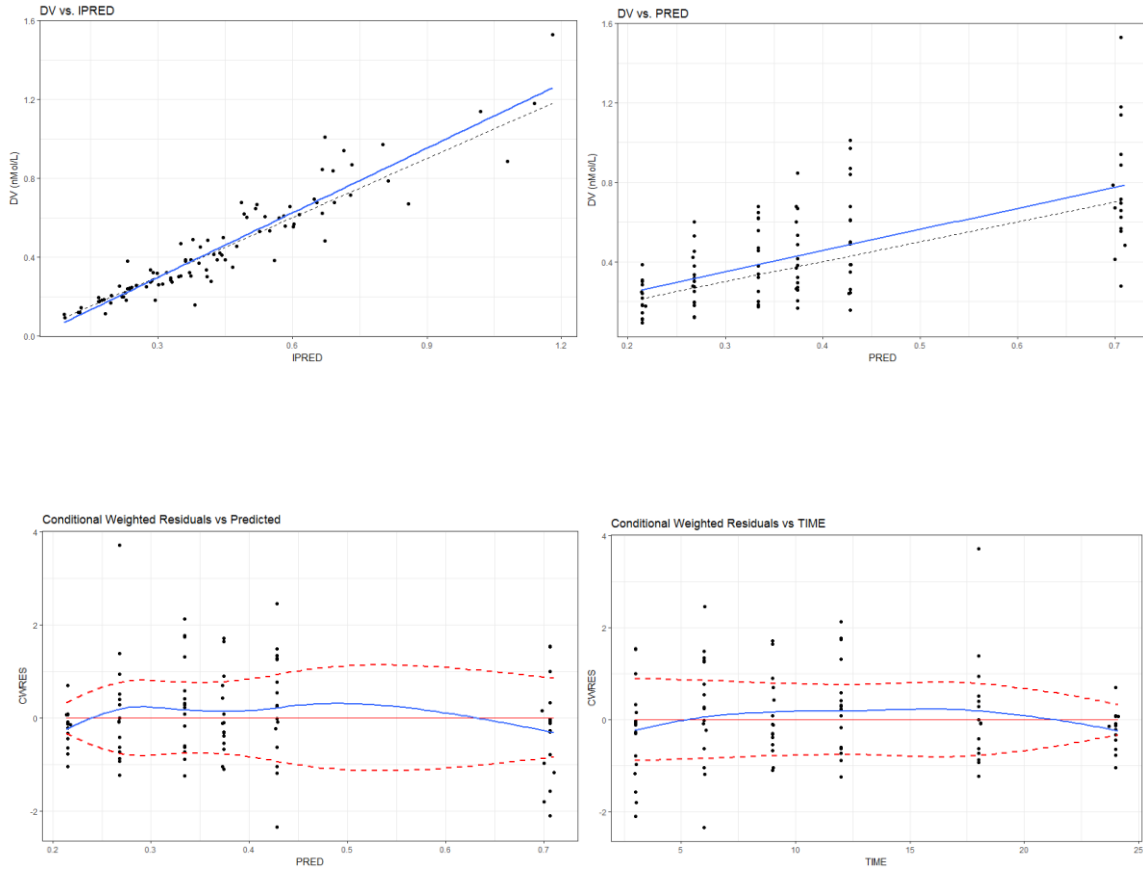
Figure S3:  
Goodness of Fit  
Plots for TDF,  
TAF, and FTC

Goodness of Fit  
Plots for Tenofovir  
Disoproxil  
Fumarate (TDF)

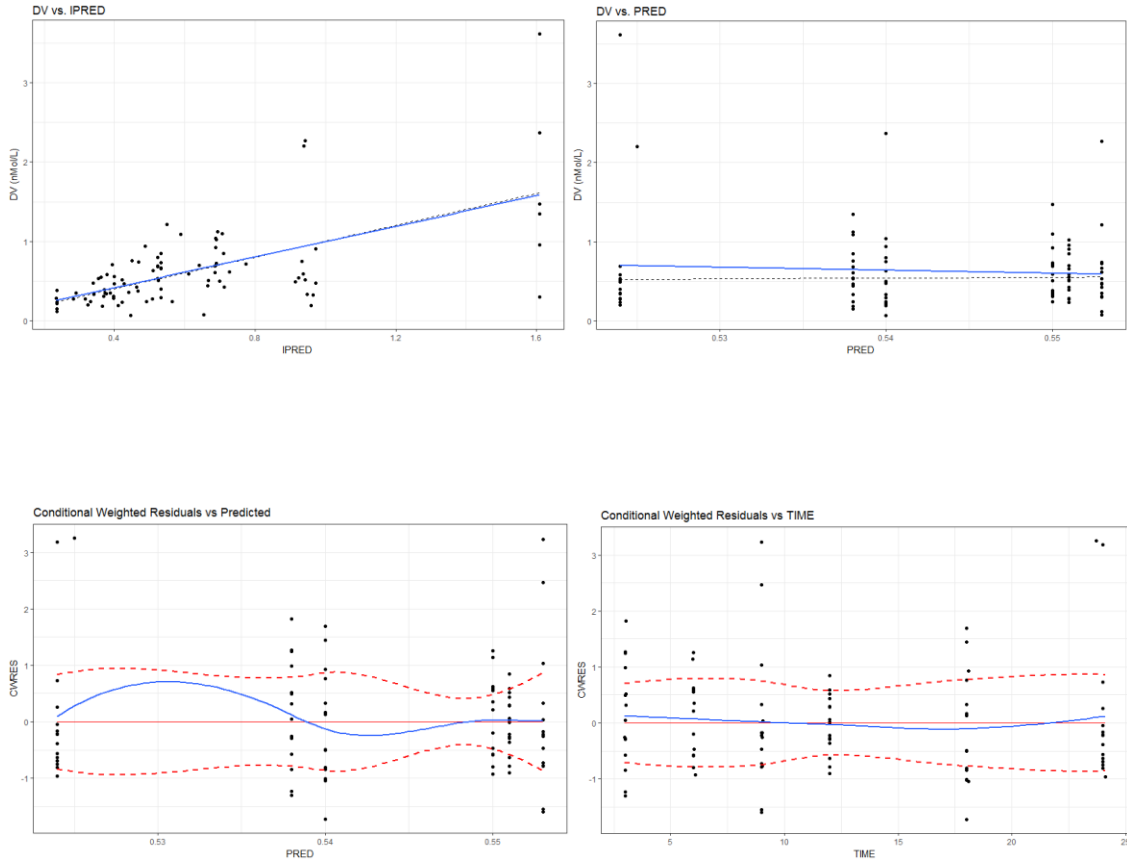
Individual Concentration vs. Time Plots (TDF)



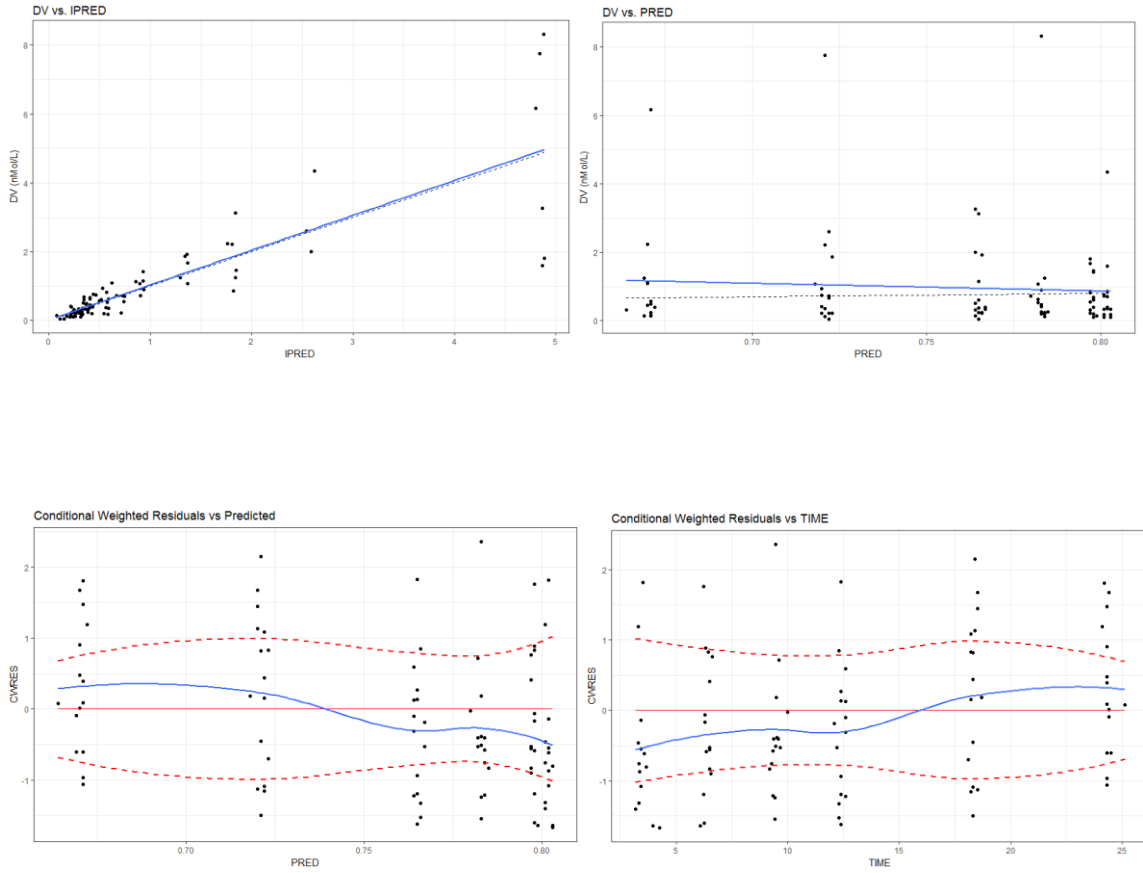
# TFV in Blood Plasma (TDF)



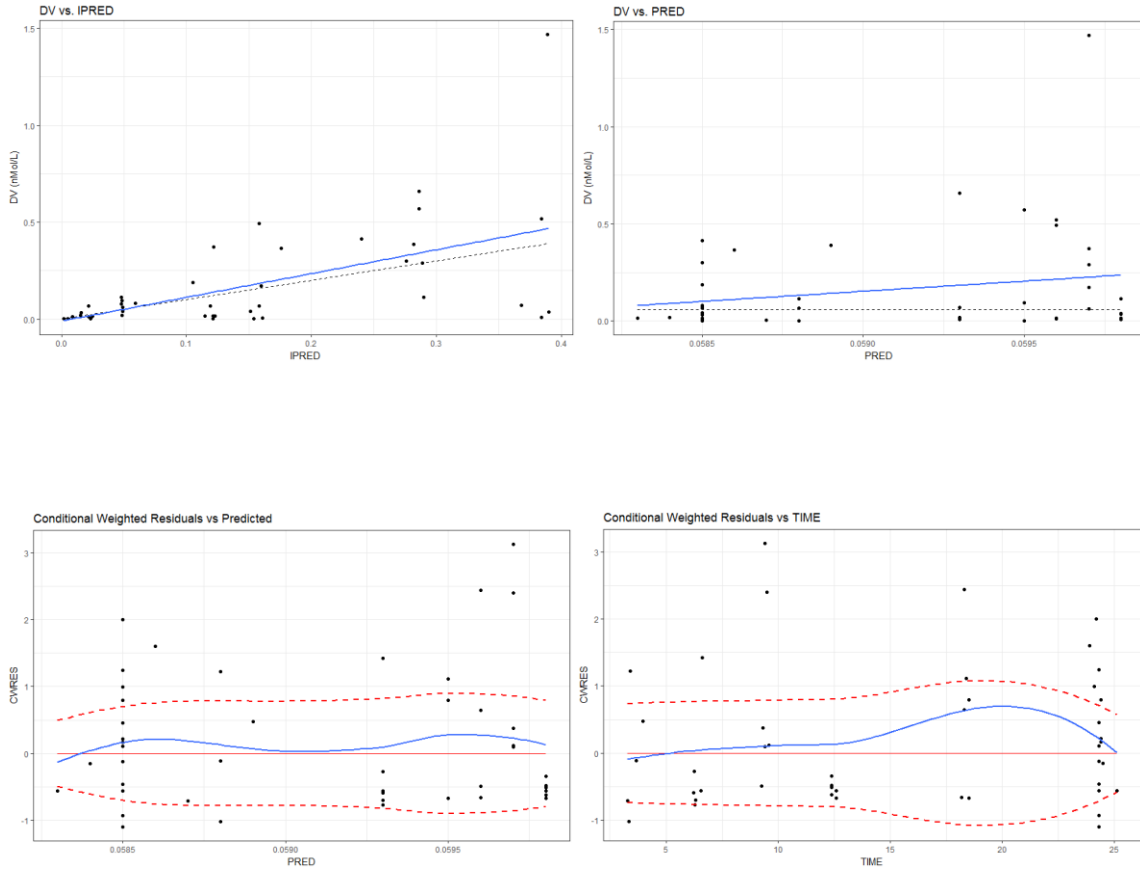
# TFVdp in PBMCs (TDF)



# TFV in Seminal Plasma (TDF)



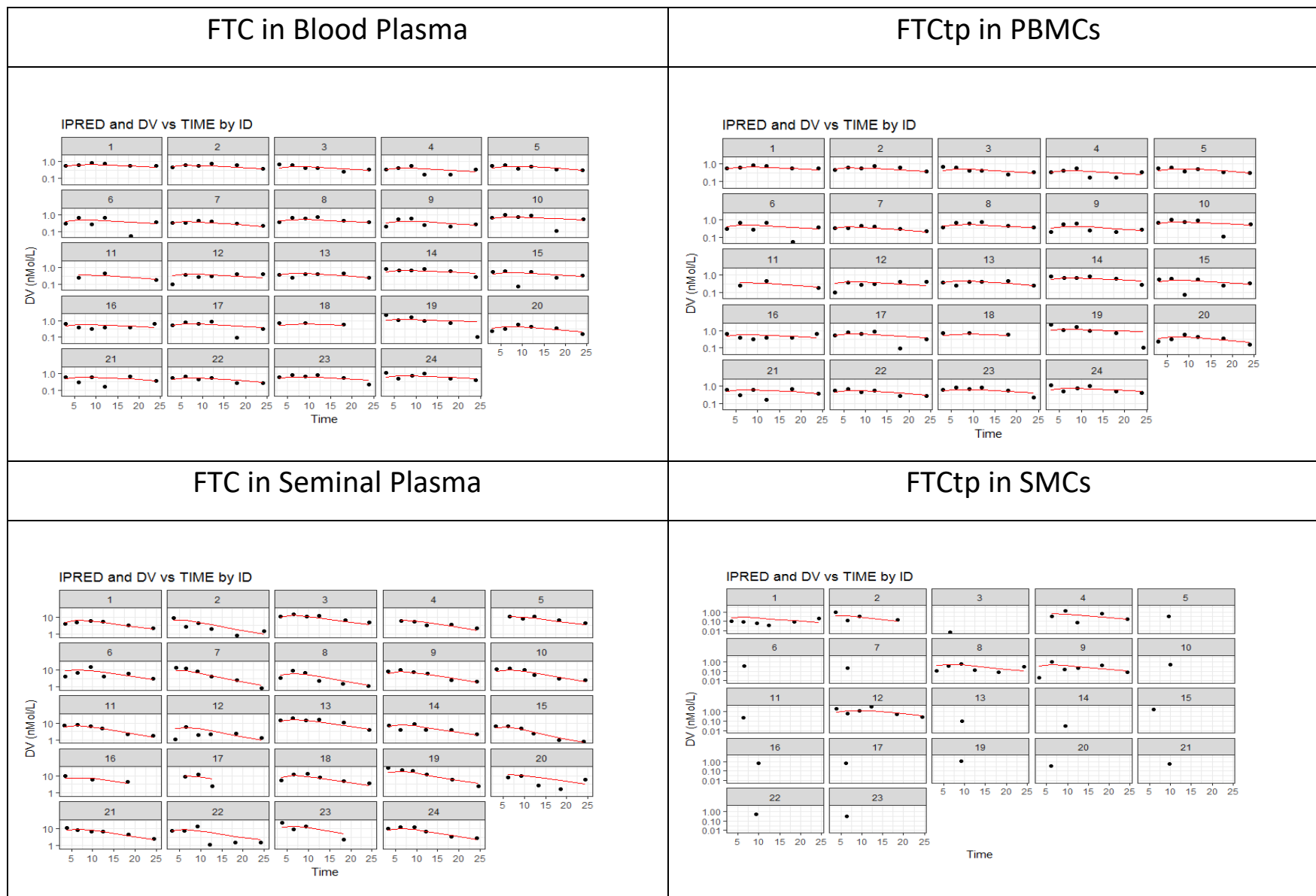
# TFVdp in SMCs (TDF)



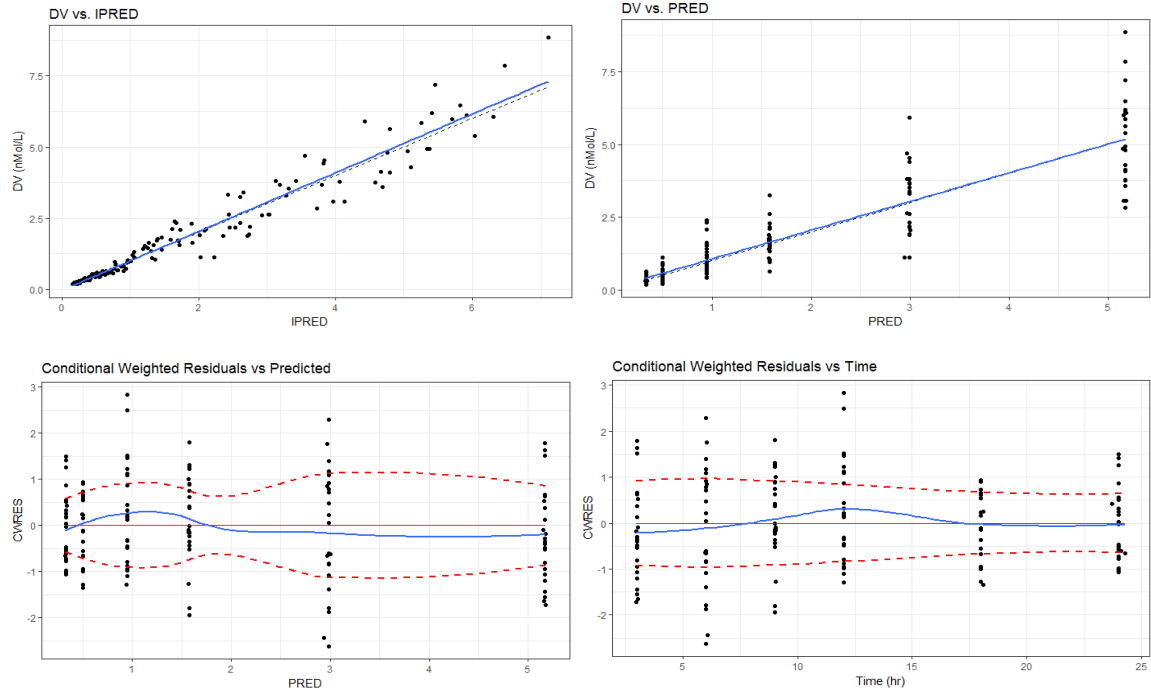
# Goodness of Fit Plots for Emtricitabine (FTC)



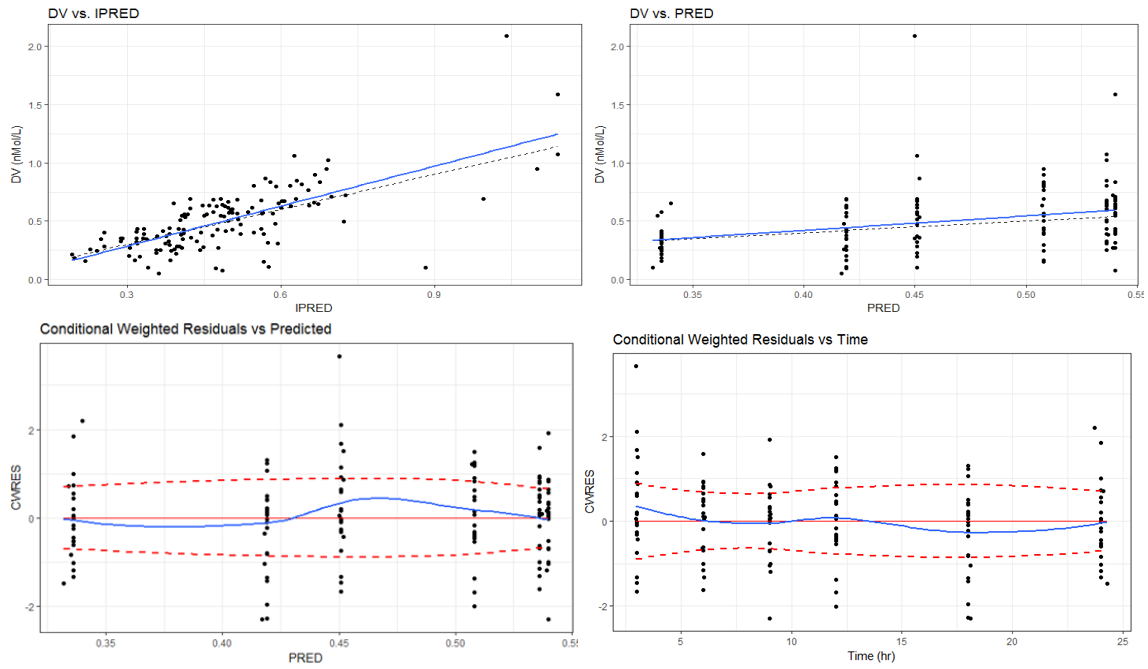
## Individual Concentration vs. Time Plots (FTC)



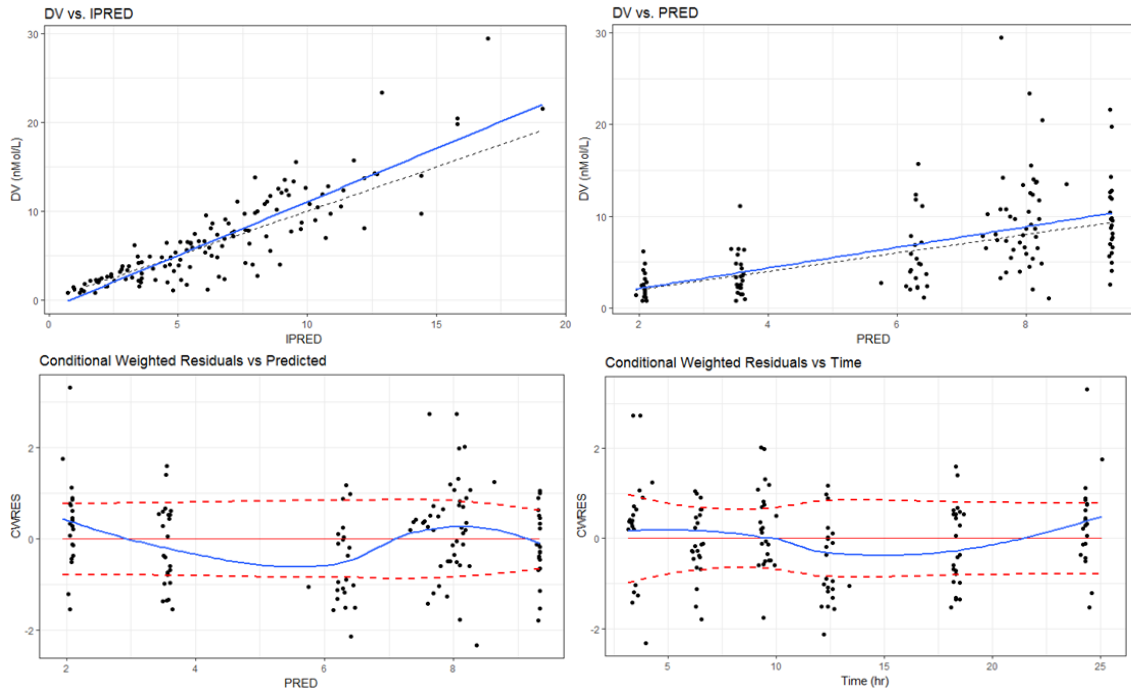
## FTC in Blood Plasma



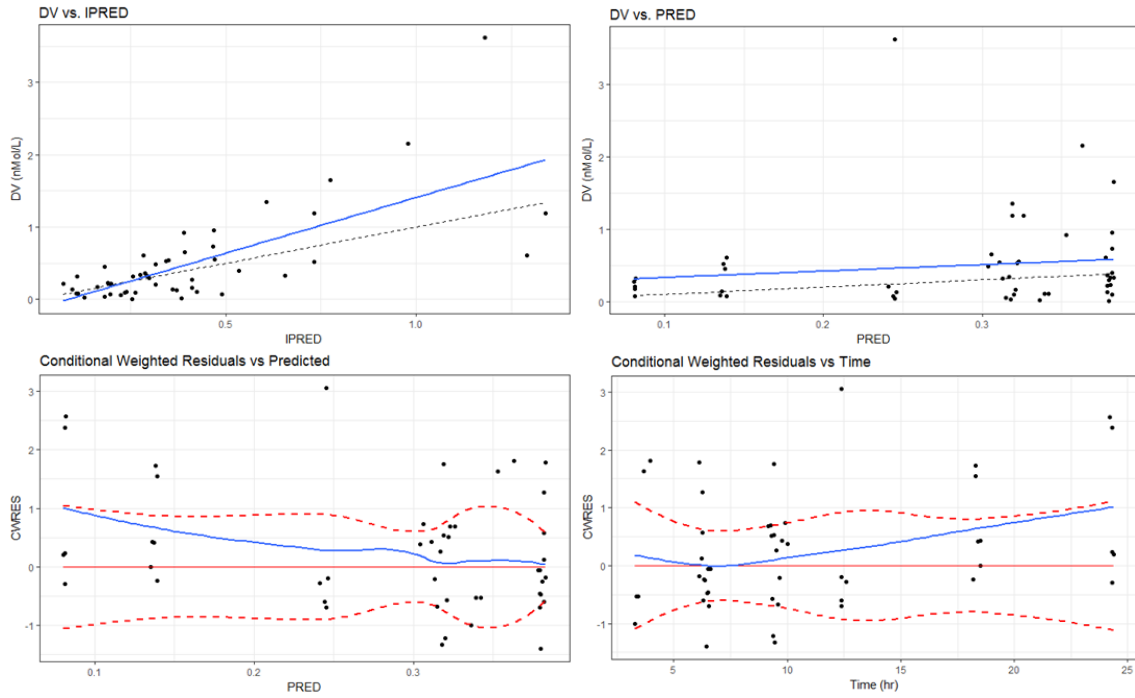
# FTCtp in PBMCs



# FTC in Seminal Plasma

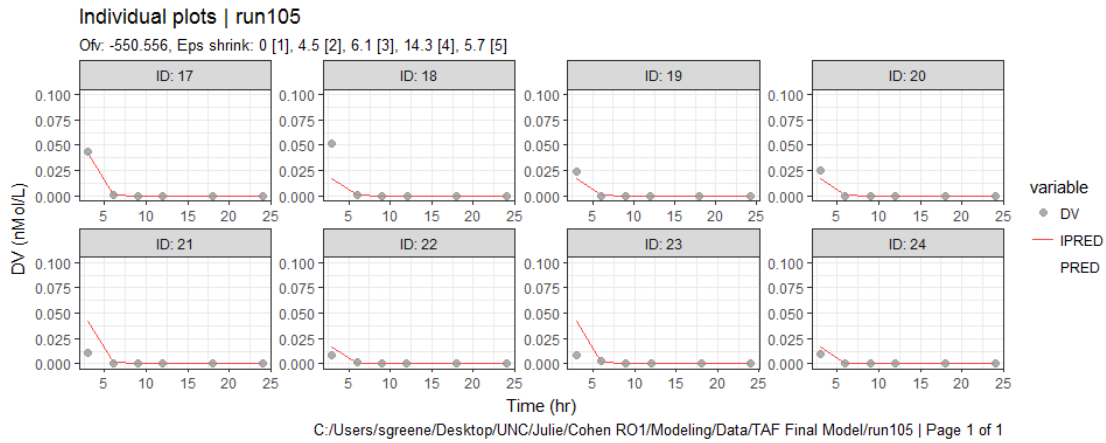


# FTCtp in SMCs

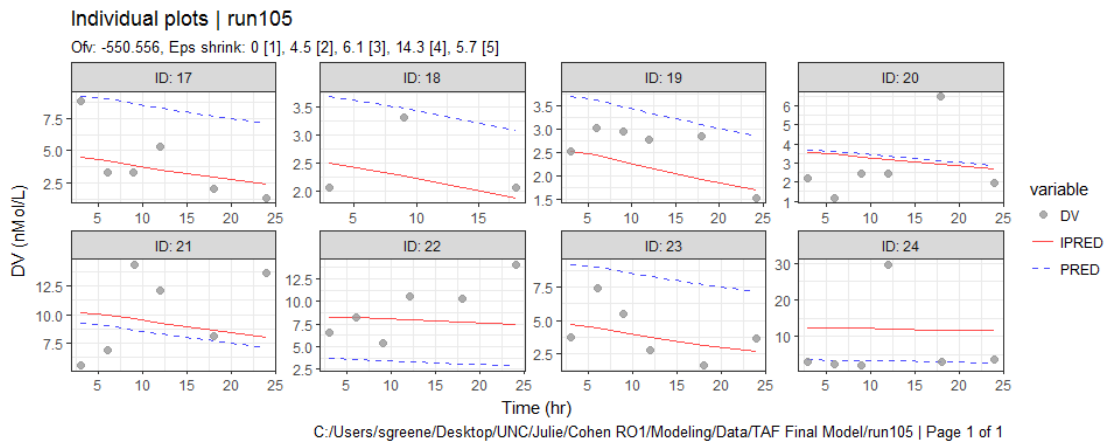


# Goodness of Fit Plots for Tenofovir Alafenamide (TAF)

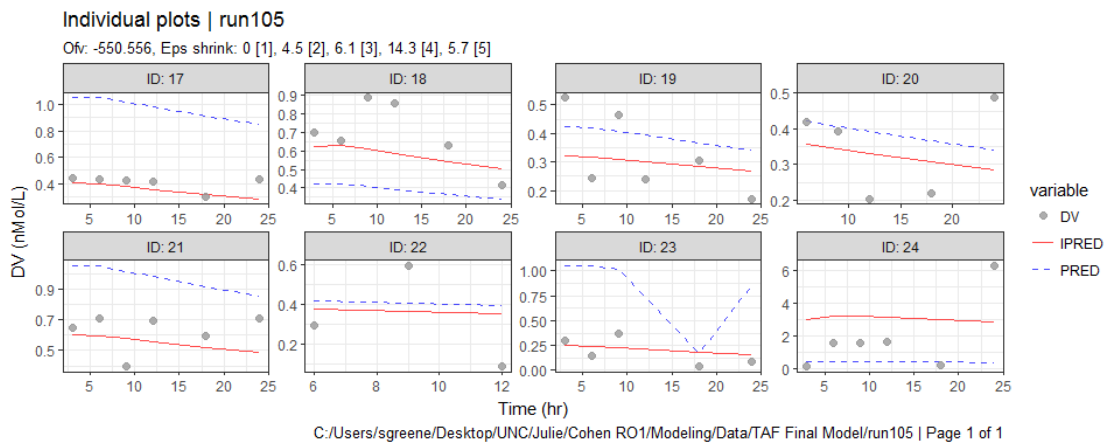
## TAF in Blood Plasma



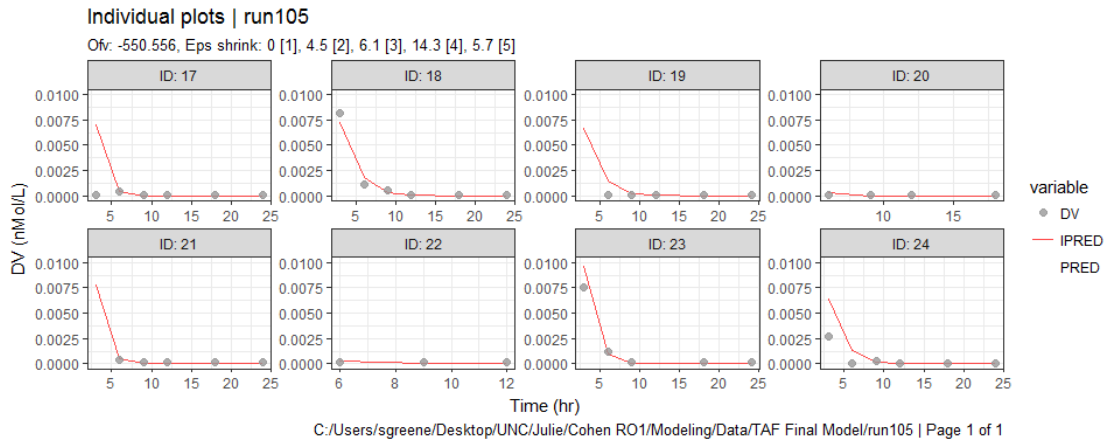
## TFVdp in PBMCs



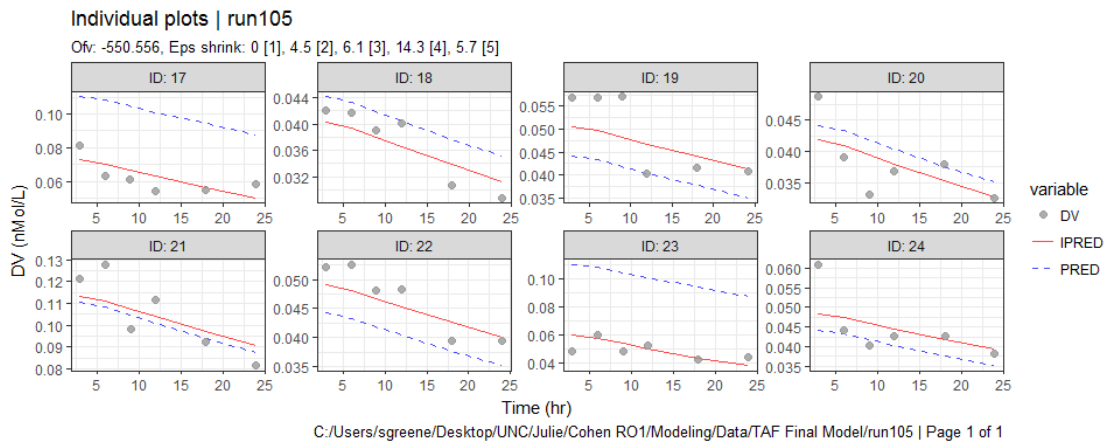
## TFV in Blood Plasma



## TAF in Seminal Plasma

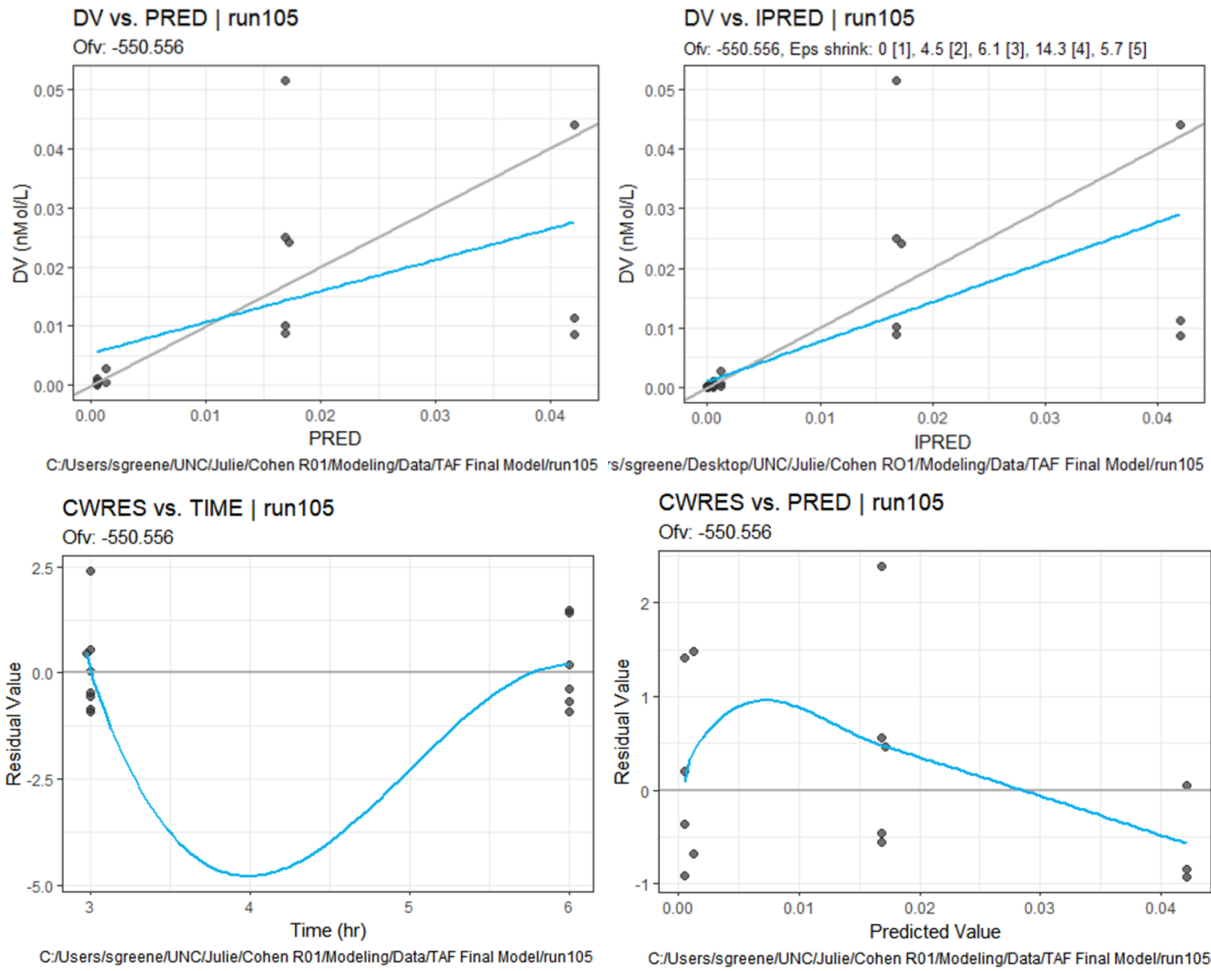


## TFV in Seminal Plasma

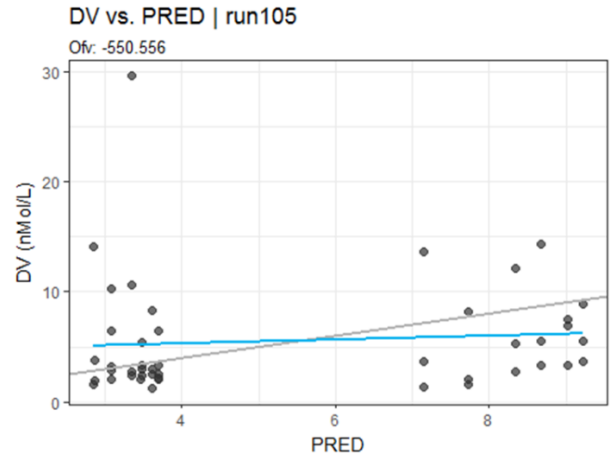
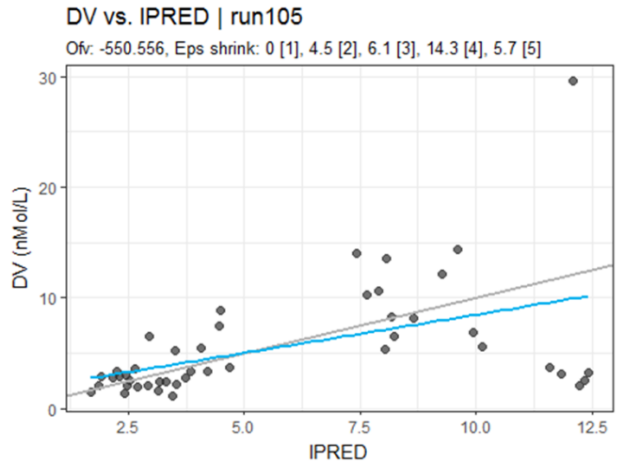




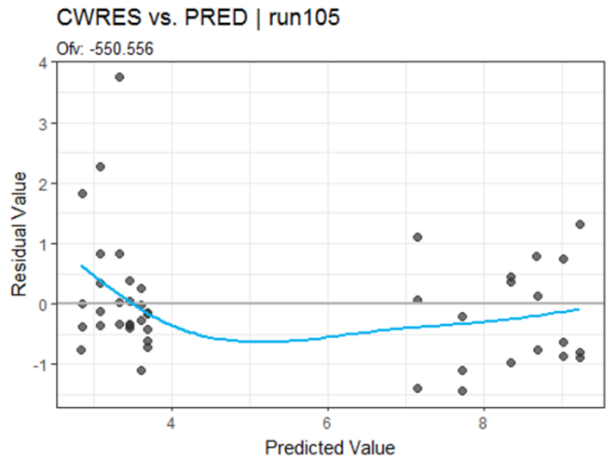
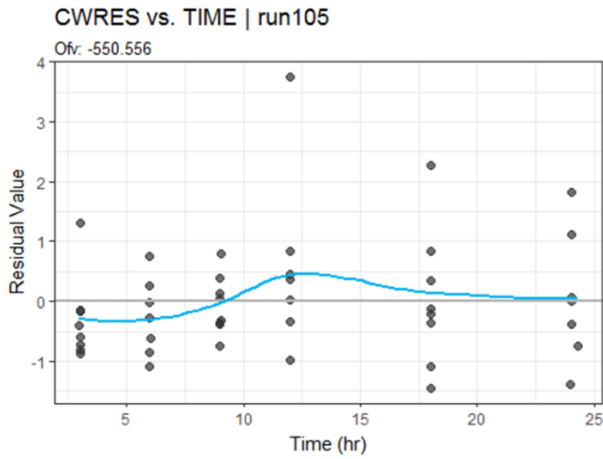
# TAF in Blood Plasma



# TFVdp in PBMCs

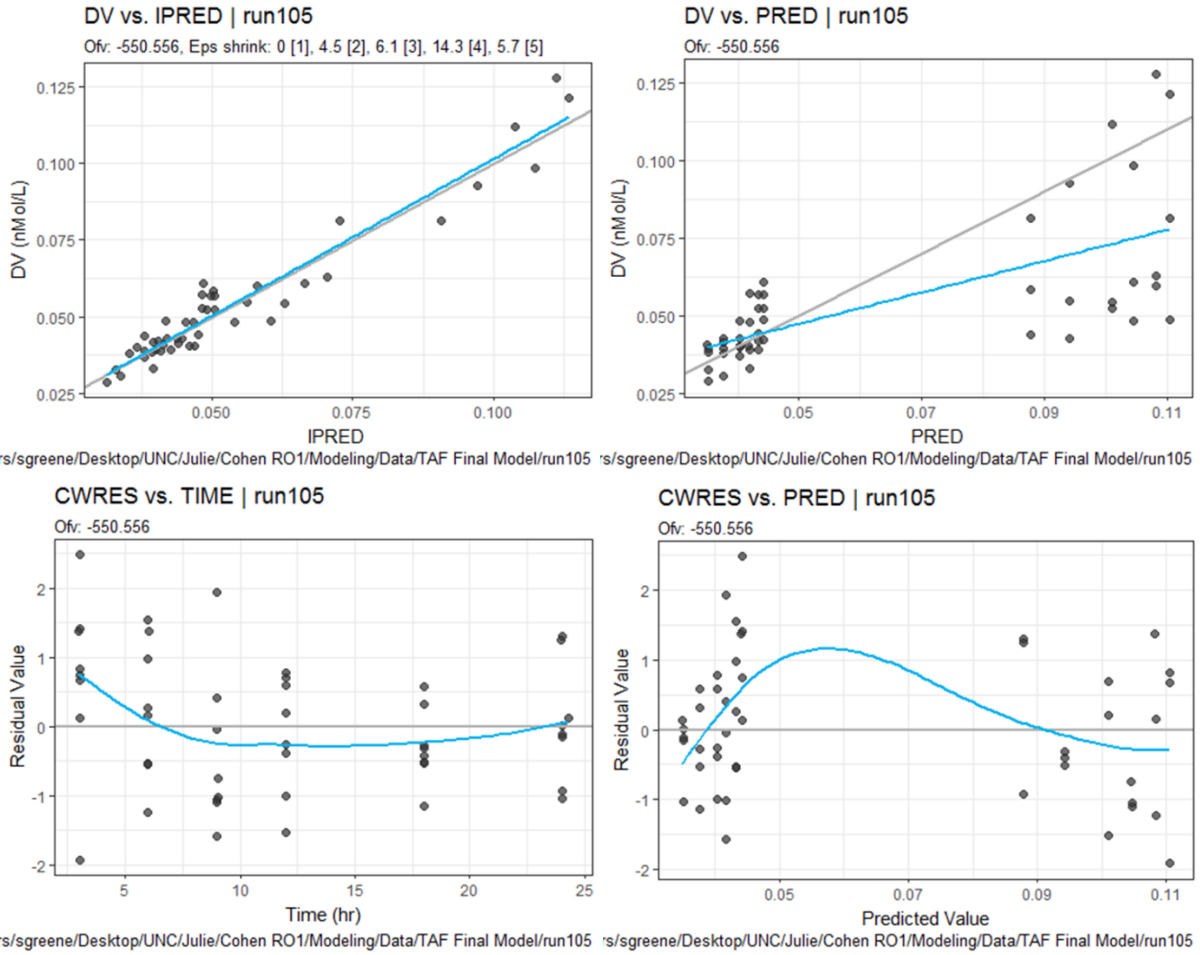


's/sgreene/Desktop/UNC/Julie/Cohen RO1/Modeling/Data/TAF Final Model/run105 's/sgreene/Desktop/UNC/Julie/Cohen RO1/Modeling/Data/TAF Final Model/run105

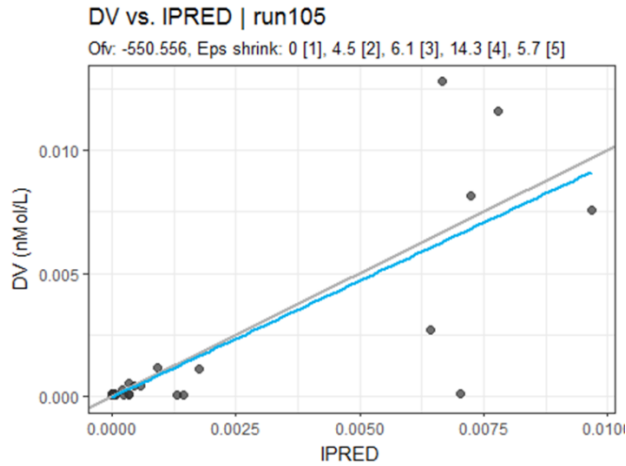


's/sgreene/Desktop/UNC/Julie/Cohen RO1/Modeling/Data/TAF Final Model/run105 's/sgreene/Desktop/UNC/Julie/Cohen RO1/Modeling/Data/TAF Final Model/run105

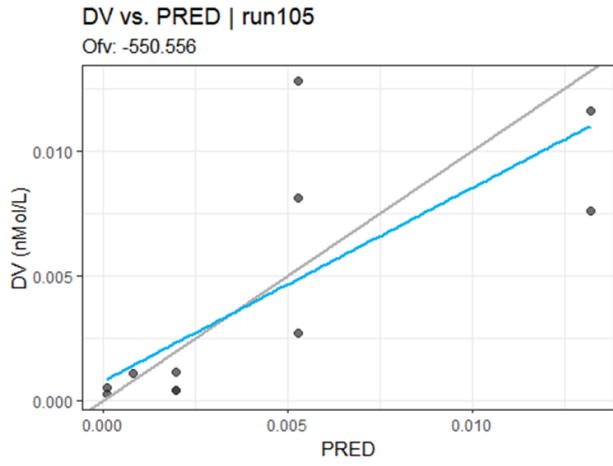
# TFV in Blood Plasma



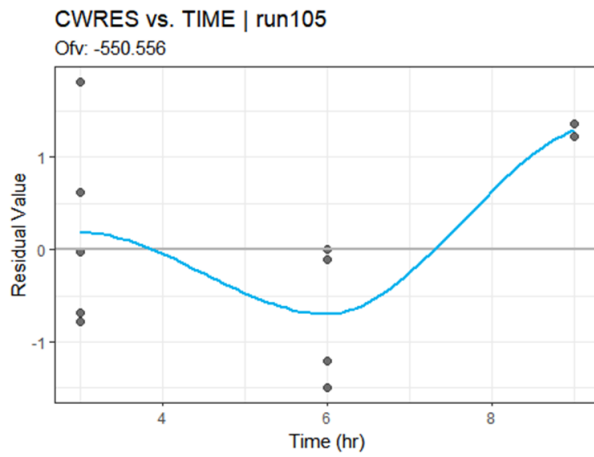
# TAF in Seminal Plasma



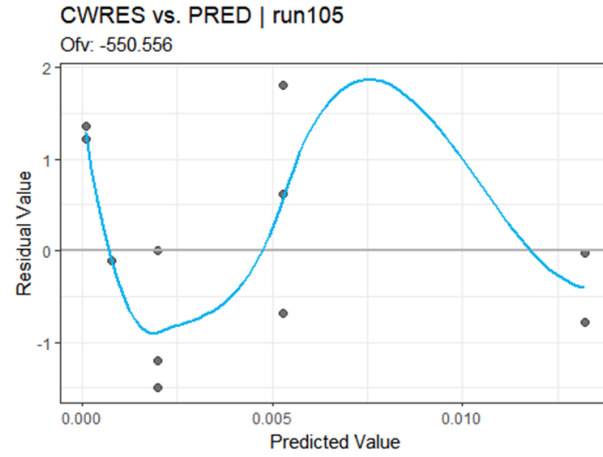
C:/Users/sgreene/Desktop/UNC/Julie/Cohen R01/Modeling/Data/TAF Final Model/run105



C:/Users/sgreene/UNC/Julie/Cohen R01/Modeling/Data/TAF Final Model/run105



C:/Users/sgreene/UNC/Julie/Cohen R01/Modeling/Data/TAF Final Model/run105



C:/Users/sgreene/UNC/Julie/Cohen R01/Modeling/Data/TAF Final Model/run105

# TFV in Seminal Plasma

