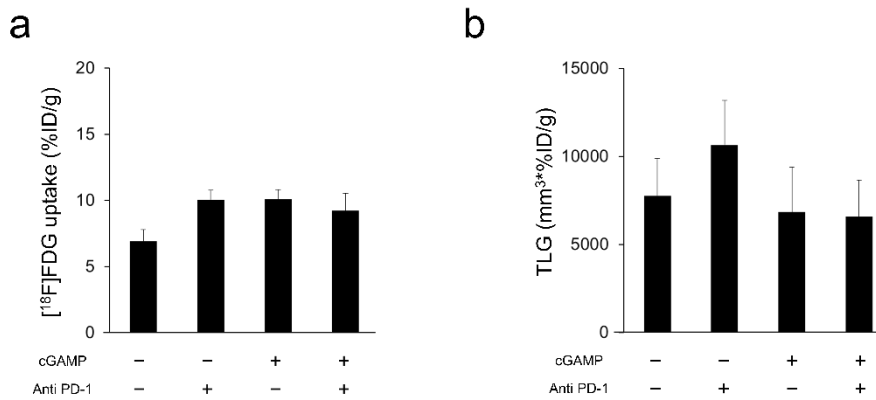
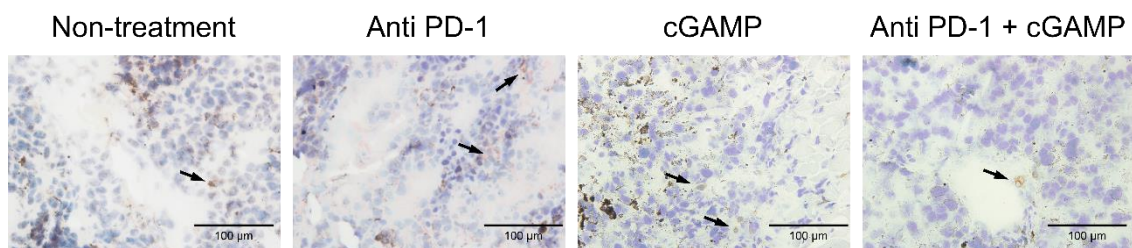


### Supporting information



**Fig. S1**

Analysis of [<sup>18</sup>F]FDG-PET data to exclude necrotic regions of the tumor. **a** Mean<sub>30%</sub> [<sup>18</sup>F]FDG uptake calculated by PET-CT images in tumors on day 7 (n = 6-7). Data of the non-treatment group and anti PD-1 treated group were quoted and reanalyzed from [11]. **b** TLG calculated by PET-CT images in tumors on day 7 (n = 6-7). Data of the non-treatment group and anti PD-1 treated group were adopted and reanalyzed from [11]. Data represent the mean ± SEM.



**Fig. S2**

CD3 staining of tumor samples in each group.

**Table S1**

Non-treatment	Anti PD-1	cGAMP	Anti PD-1 + cGAMP
86.8 ± 3.7 mg/dL	101.3 ± 8.2 mg/dL	74.0 ± 12.3 mg/dL	76.0 ± 21.9 mg/dL

Blood glucose levels on day 7 (n = 4). Data represent the mean ± SEM.