

The immunoblotting signal was developed by the ECL-Western Blotting reagent, and detected in a luminescent imager analyzer LAS3000 after 10 min. Quantitation of the signal was performed using the computer program Multigauge V3.0.

CBS signal was obtained using Coomassie Blue Staining R-250.

Coomassie

IgE binding

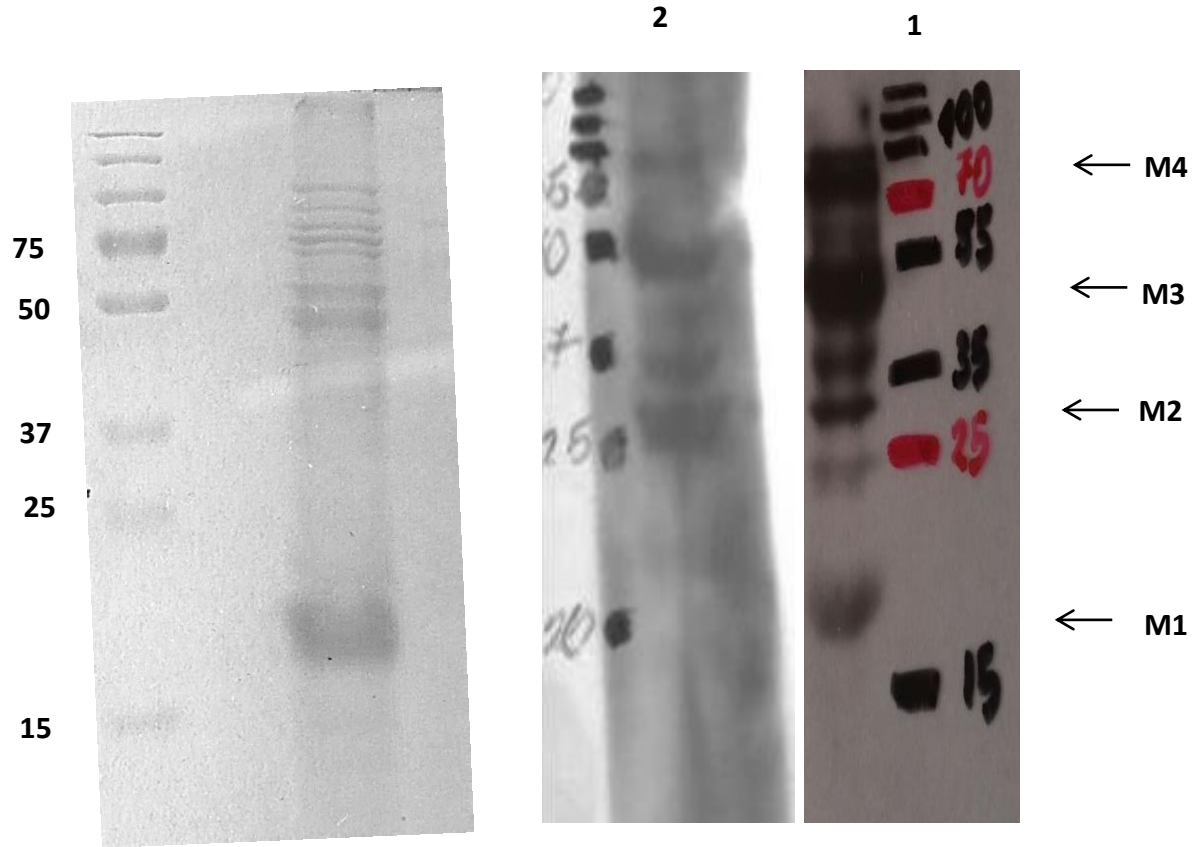


Figure 1.

1: peach tree pollen allergic subjects

2: pollen allergic subjects.

M1: Pathogenesis related protein 1A.

M2: glucan endo-1,3-beta-glucosidase-like.

M3: Polygalacturonase.

M4: UTP-glucose-1-phosphate uridylyltransferase.

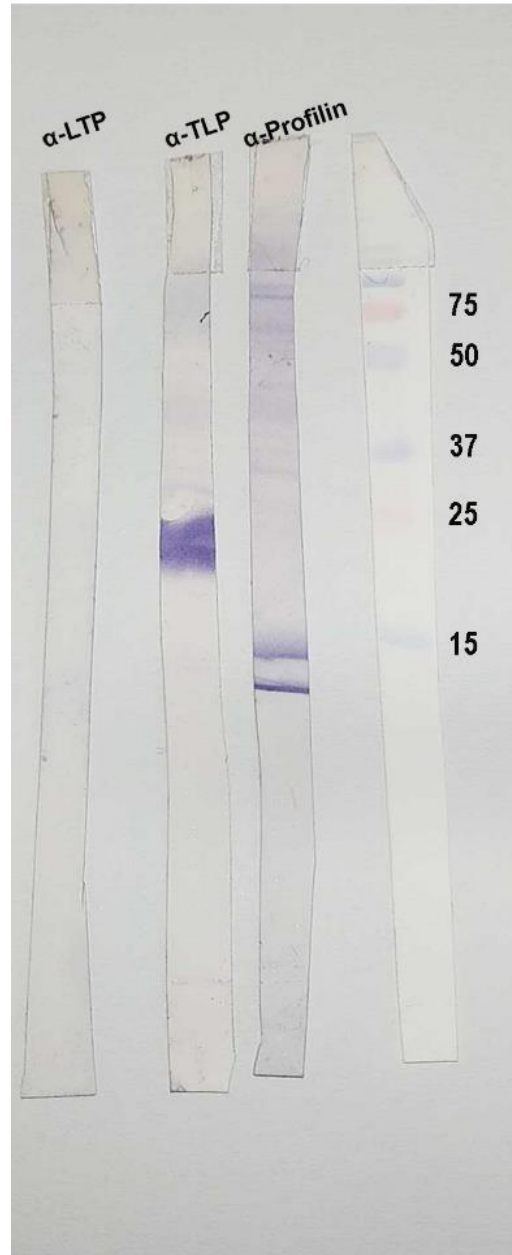


Figure 2.

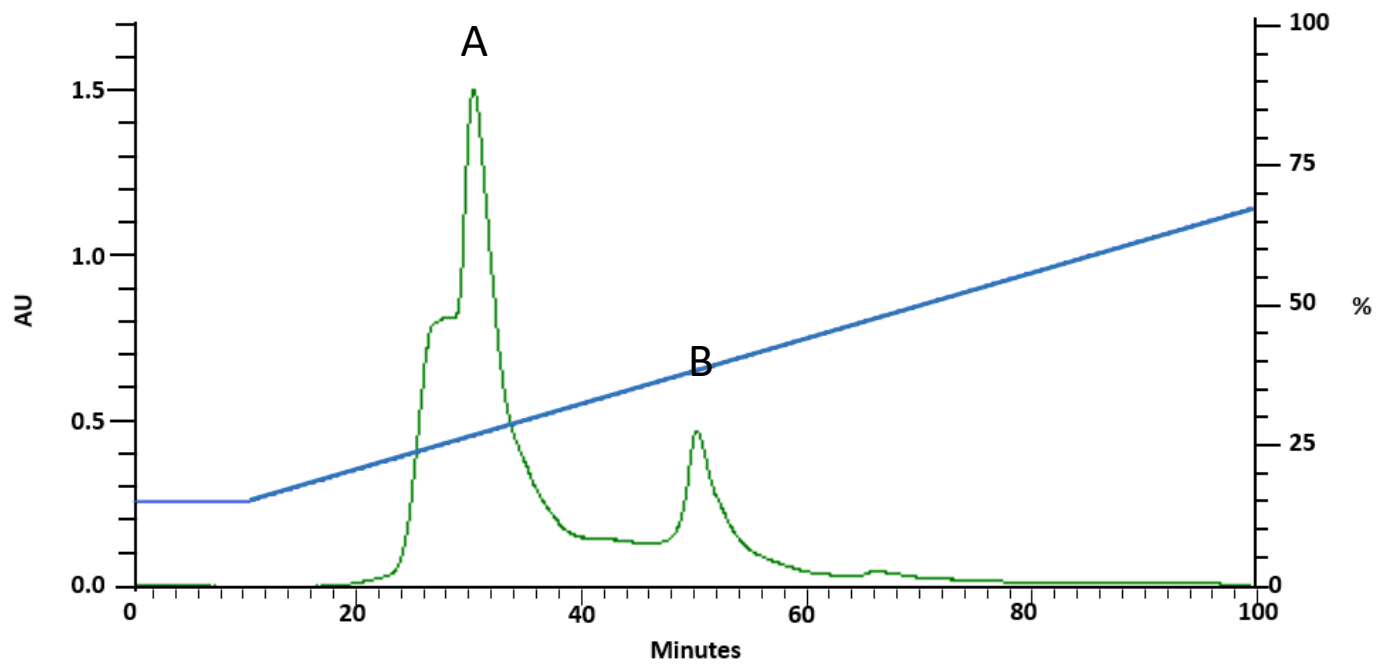
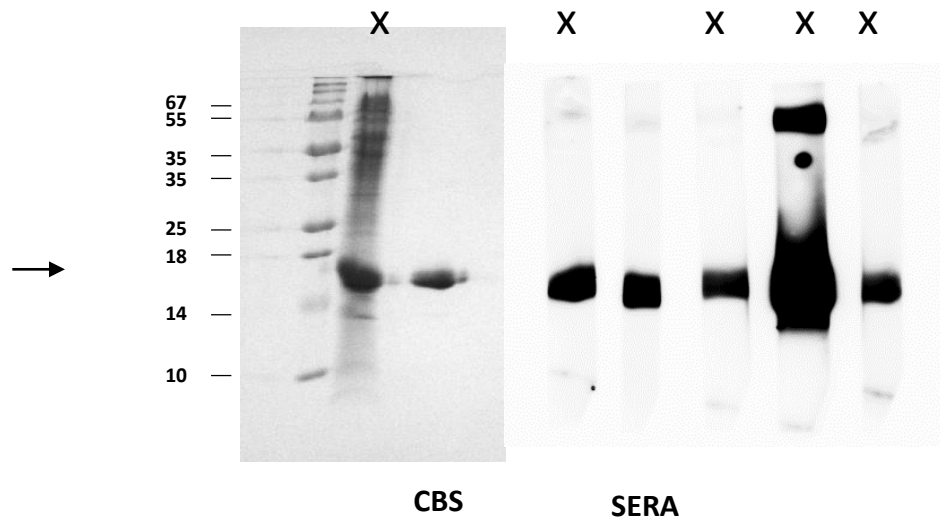


Figure 3.

Skin prick test (SPT) + to Peach tree pollen

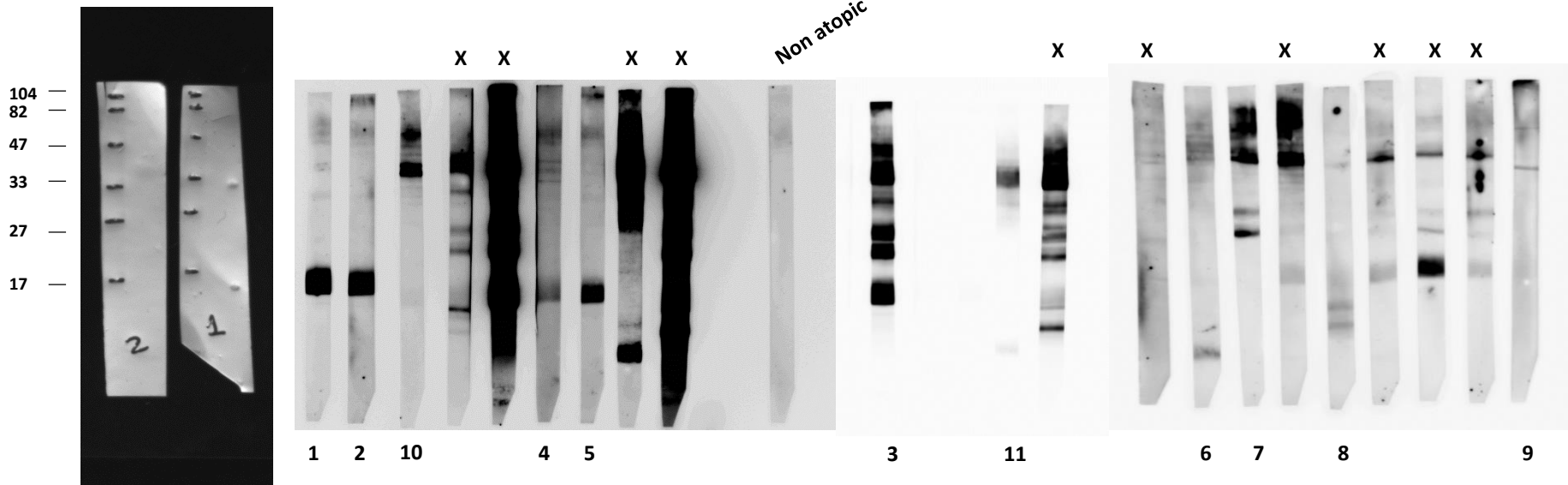


Figure 4.