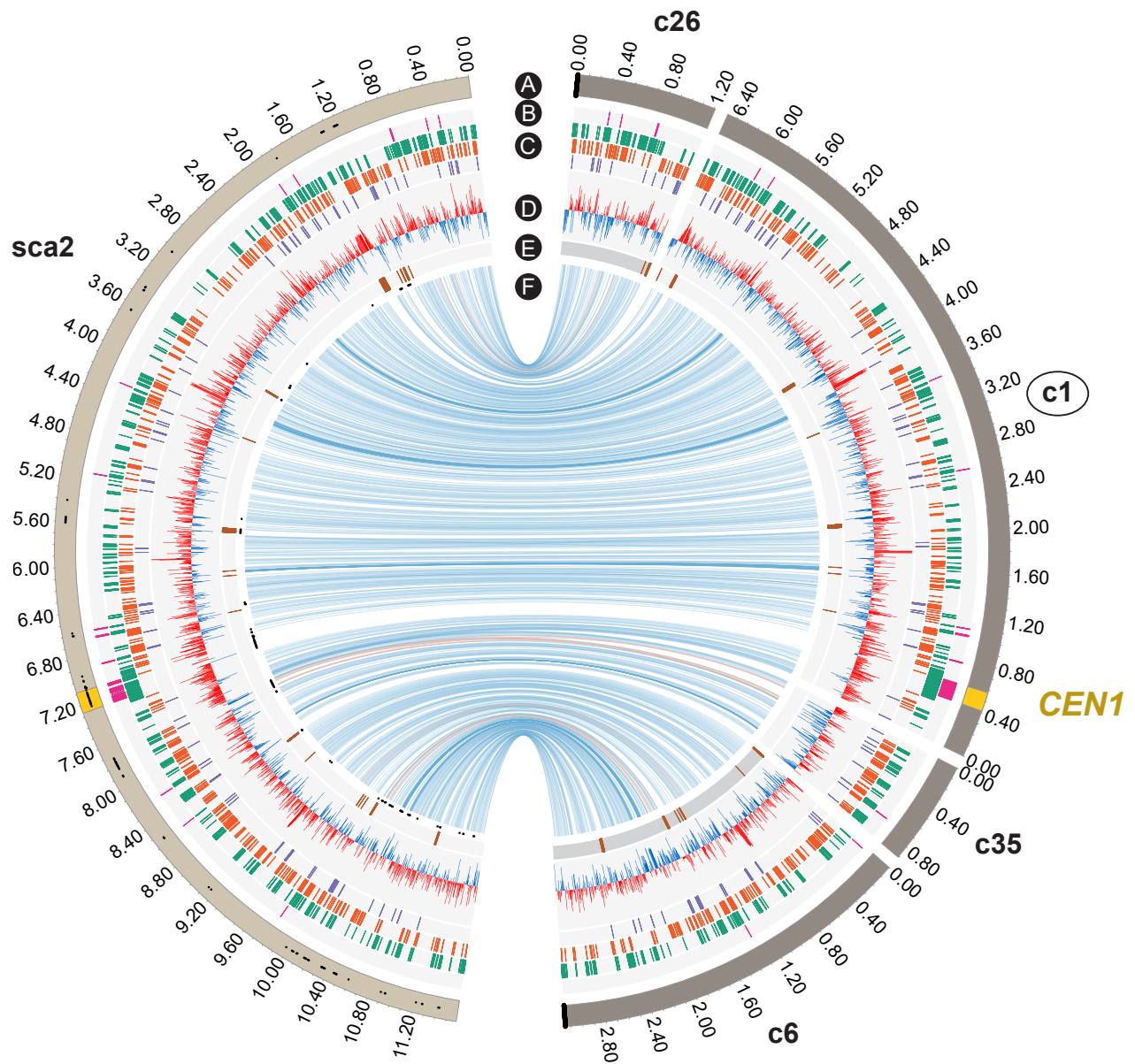


A

P. sojae V3

*Psojae*2019.1



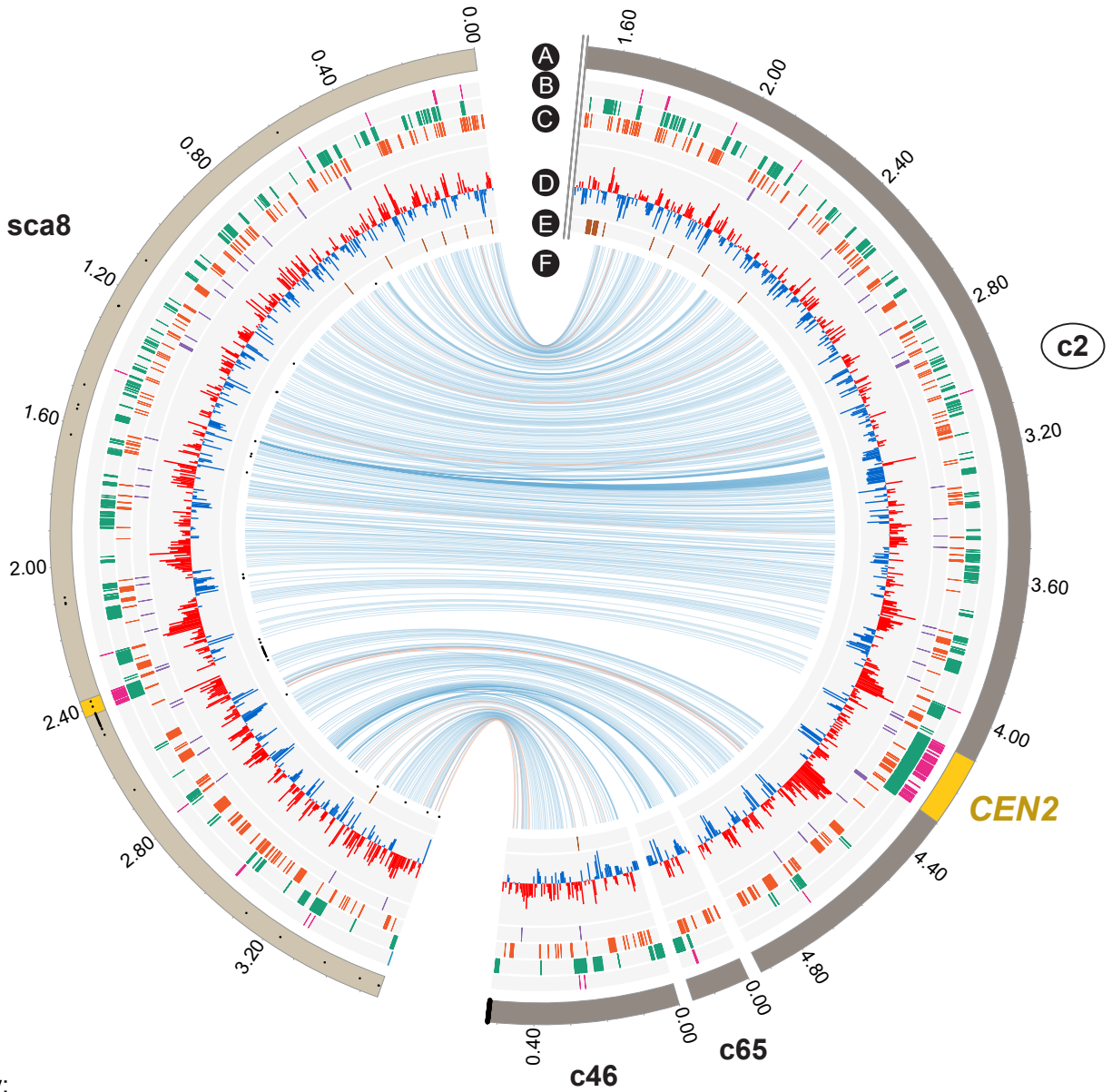
key:

A Telomeric repeats	B <i>Copia</i> -like transposon (CoLT)	D GC content (red above / blue below genome average (5 kb non-overlapping window))
C Transposable elements (from the outside inward): LTR retrotransposons (green), DNA transposons (orange), Other transposons (purple)	E tRNA genes (brown), contigs broken at tRNA clusters (grey)	F BLASTn links (> 2 kb)
Centromeres (yellow)	Assembly gaps (dotted line)	

B

P. sojae V3

Psojae2019.1



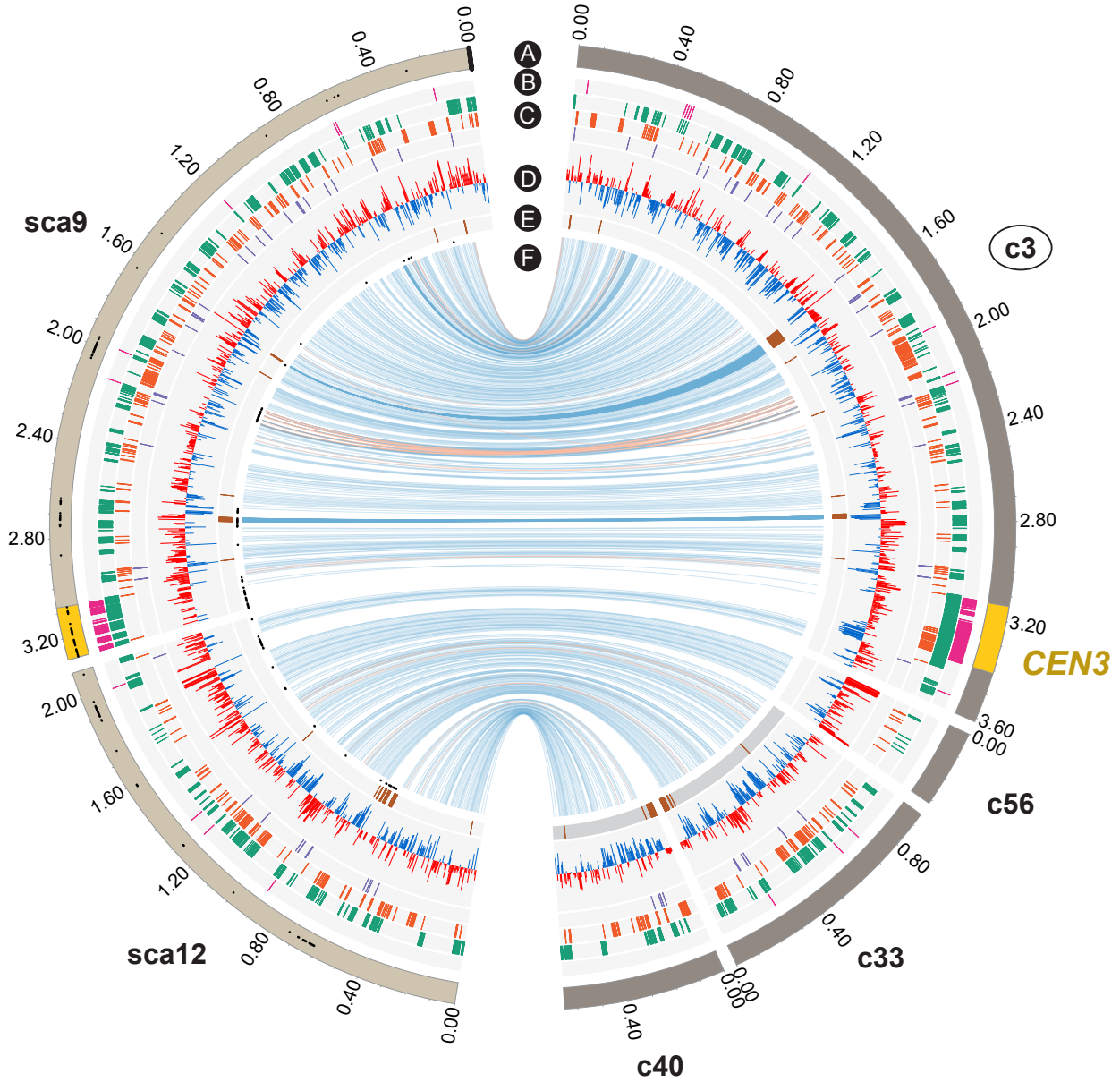
key:

- (A) | Telomeric repeats ■ Centromeres ... Assembly gaps
- (B) ■ Copia-like transposon (CoLT)
- (C) Transposable elements (from the outside inward):
 - LTR retrotransposons ■ DNA transposons ■ Other transposons

- (D) ■ GC content red above / blue below genome average (5 kb non-overlapping window)
- (E) ■ tRNA genes ■ contigs broken at tRNA clusters
- (F) ■ BLASTn links (> 2 kb)

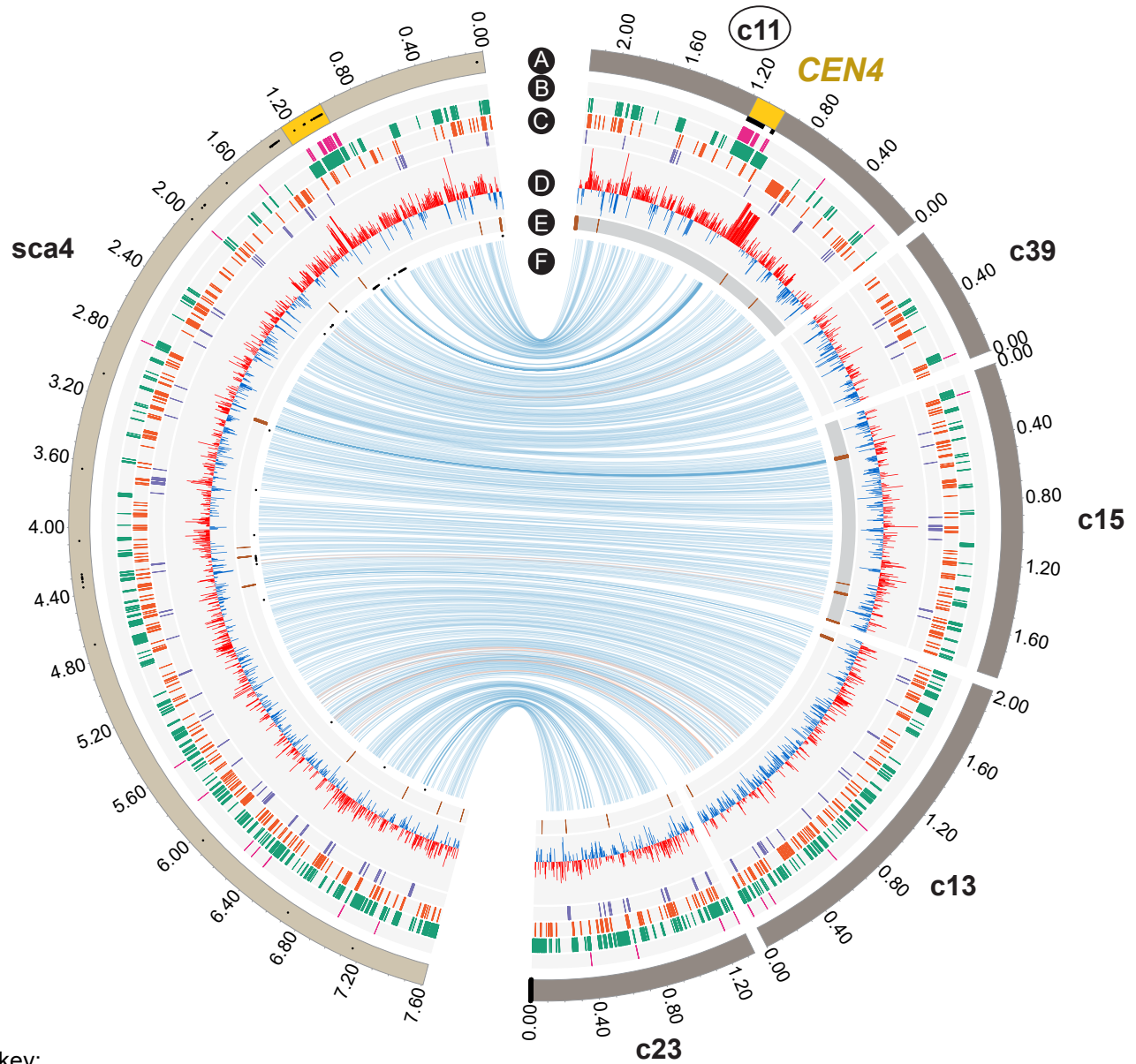
C

P. sojae V3 Psojae2019.1



key:

- | | |
|--|---|
| <ul style="list-style-type: none"> (A) Telomeric repeats Centromeres - - - Assembly gaps (B) <i>Copia</i>-like transposon (CoLT) (C) Transposable elements (from the outside inward): <ul style="list-style-type: none"> LTR retrotransposons DNA transposons Other transposons | <ul style="list-style-type: none"> (D) GC content red above / blue below genome average (5 kb non-overlapping window) (E) tRNA genes contigs broken at tRNA clusters (F) BLASTn links (> 2 kb) |
|--|---|

D**P. sojae V3****Psojae2019.1**

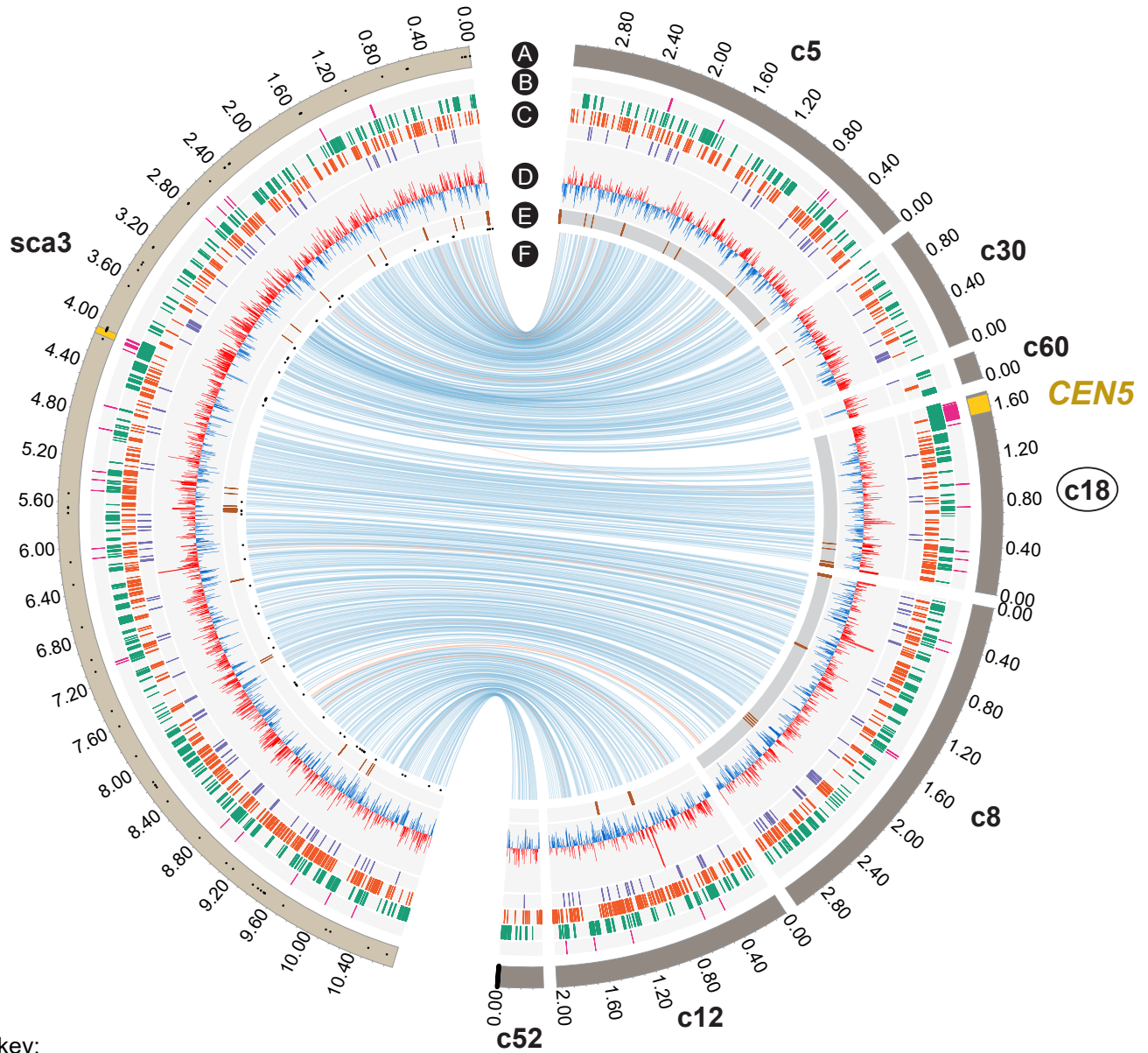
key:

- A** | Telomeric repeats **C** Centromeres --- Assembly gaps
- B** | *Copia*-like transposon (CoLT)
- C** | Transposable elements (from the outside inward):
 - █ LTR retrotransposons █ DNA transposons █ Other transposons

- D** | **+** GC content red above / blue below genome average
(5 kb non-overlapping window)
- E** | tRNA genes █ contigs broken at tRNA clusters
- F** | BLASTn links (> 2 kb)

E

P. sojae V3 Psojae2019.1

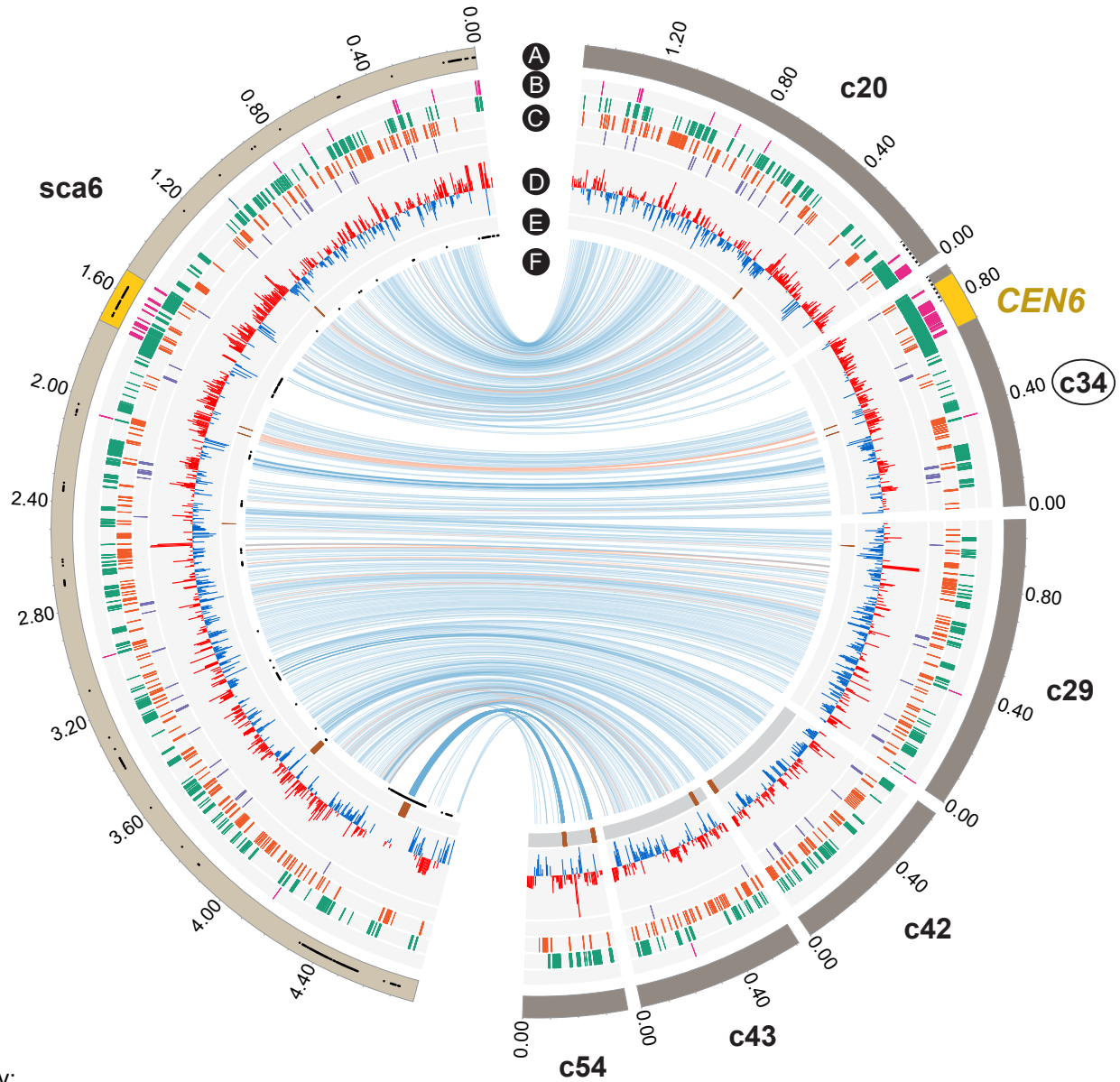


key:

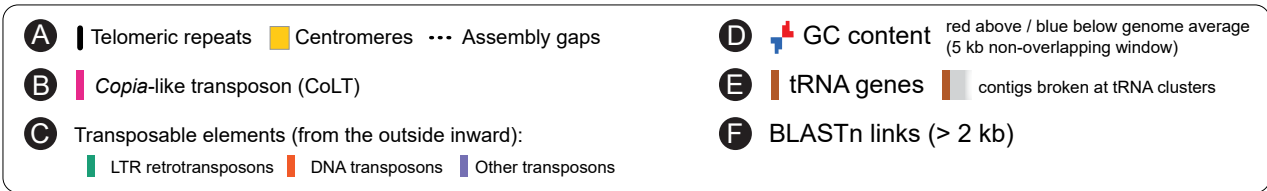
A Telomeric repeats	Centromeres 	... Assembly gaps	D GC content	red above / blue below genome average (5 kb non-overlapping window)
B Copia-like transposon (CoLT)			E tRNA genes	 contigs broken at tRNA clusters
C Transposable elements (from the outside inward):			F BLASTn links (> 2 kb)	
 LTR retrotransposons	 DNA transposons	 Other transposons		

F

P. sojae V3 Psojae2019.1



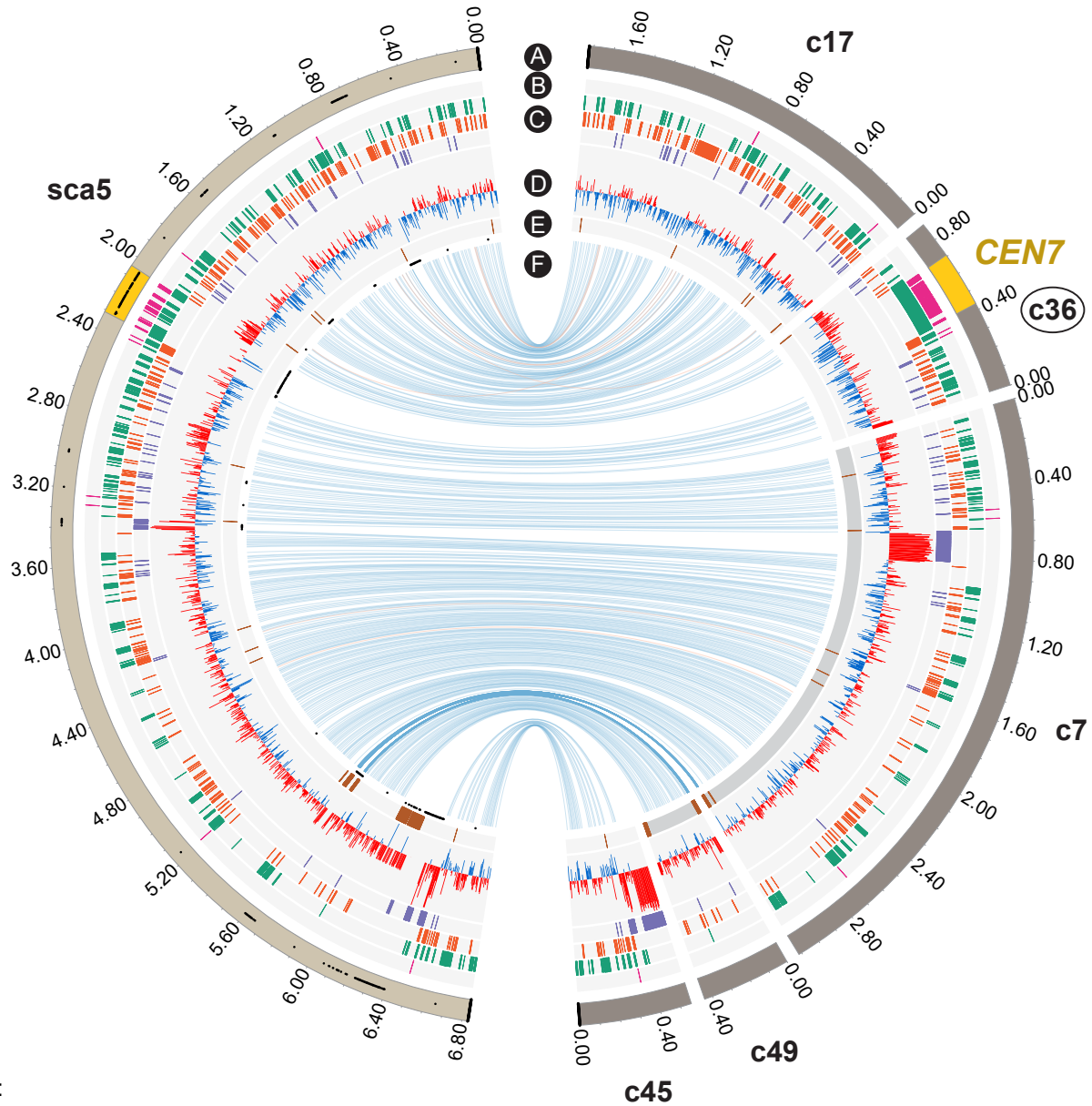
key:



G

P. sojae V3

Psojae2019.1



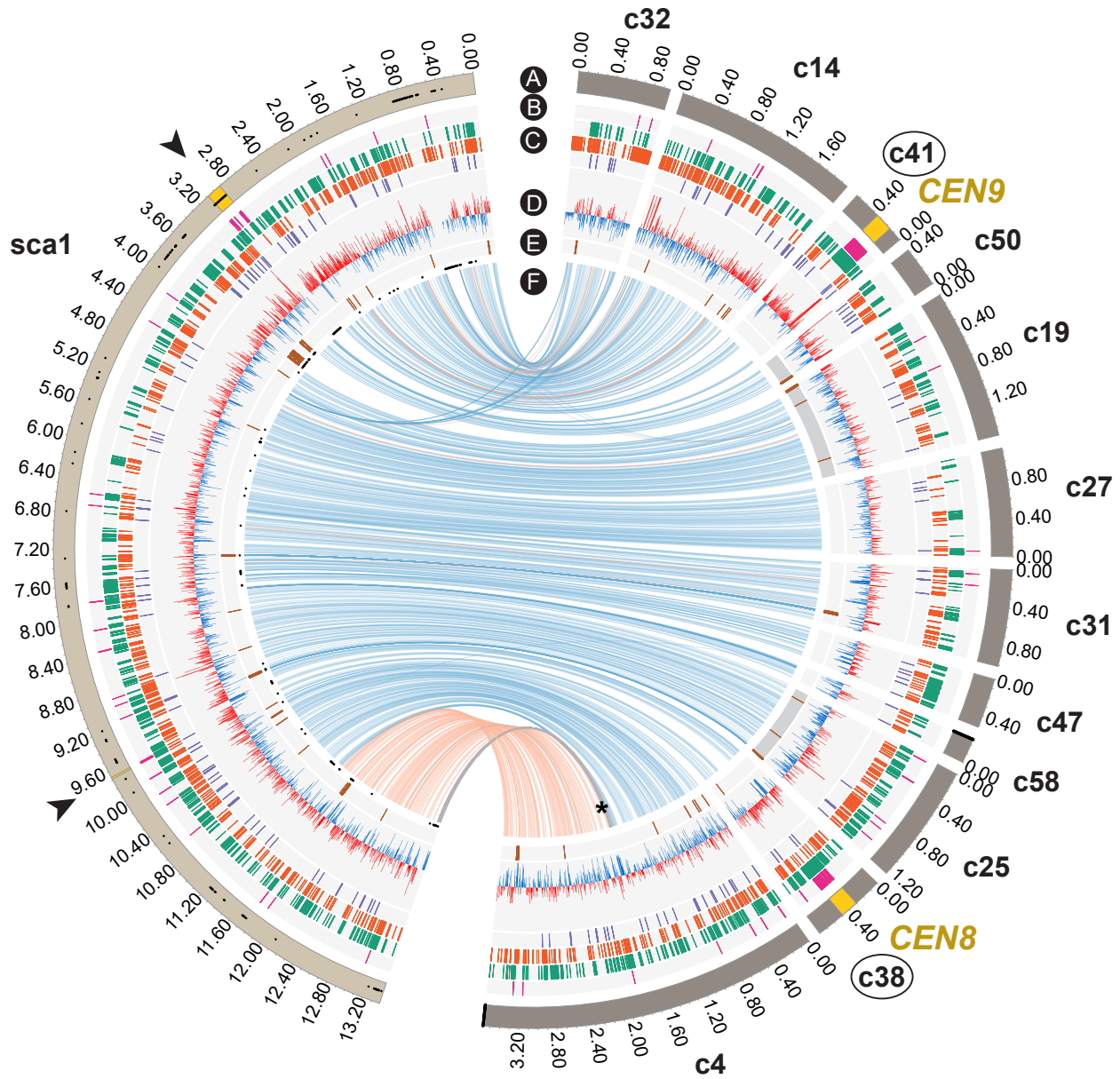
key:

- A** | Telomeric repeats **■** Centromeres **...** Assembly gaps
- B** | *Copia*-like transposon (CoLT)
- C** | Transposable elements (from the outside inward):
 - LTR retrotransposons **■** DNA transposons **■** Other transposons

- D** | **+** GC content red above / blue below genome average (5 kb non-overlapping window)
- E** | tRNA genes **■** contigs broken at tRNA clusters
- F** | BLASTn links (> 2 kb)

H

P. sojae V3 *Psojae2019.1*



key:

A	Telomeric repeats	B	<i>Copia</i> -like transposon (CoLT)	D	GC content red above / blue below genome average (5 kb non-overlapping window)
C	Transposable elements (from the outside inward): █ LTR retrotransposons █ DNA transposons █ Other transposons	E	tRNA genes	F	BLASTn links (> 2 kb)
	█ Centromeres		█ contigs broken at tRNA clusters		
	--- Assembly gaps				