

(A)

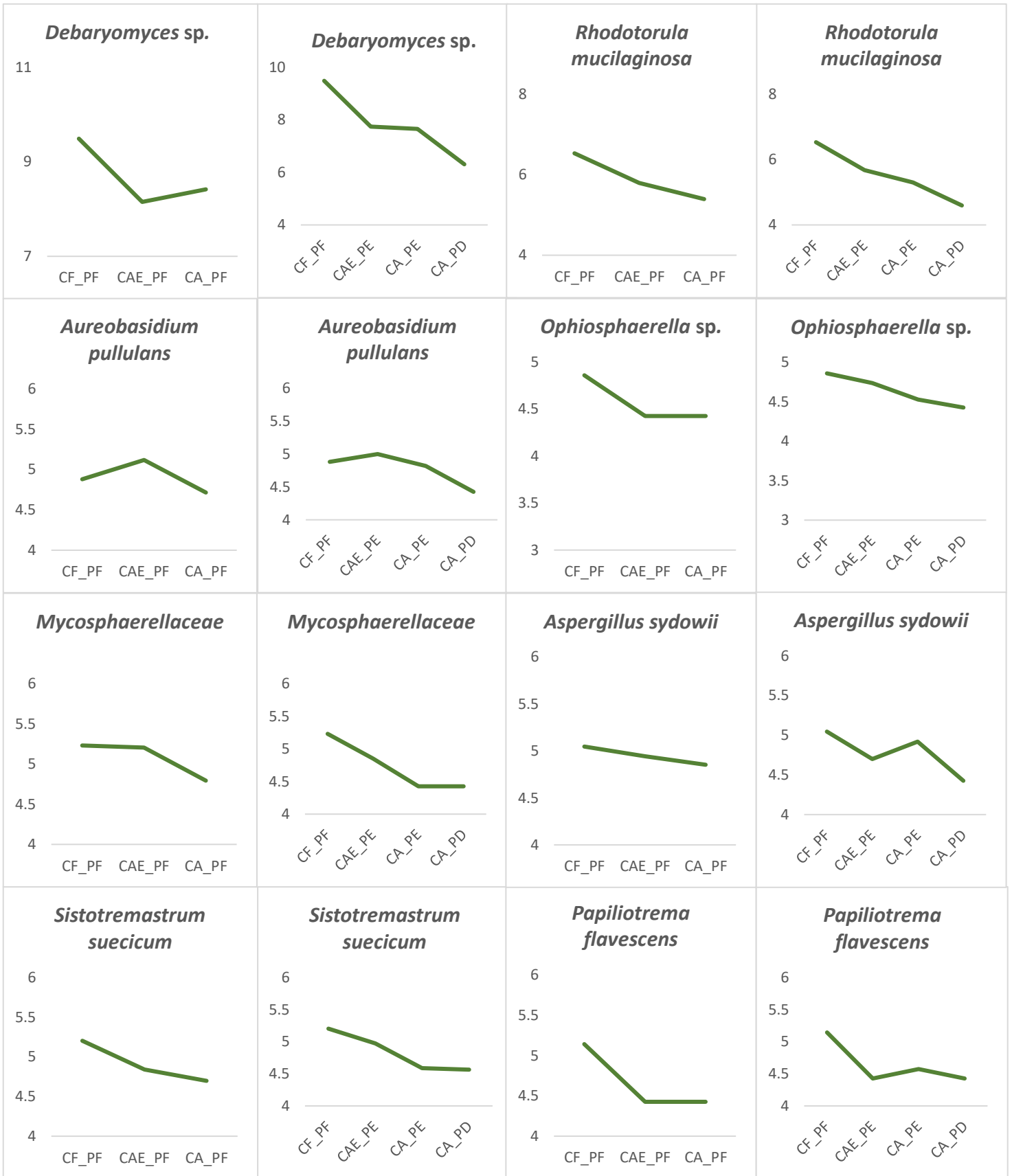




Figure S4: Significantly differentially abundant taxa enriched in dental caries and in health. (A) Compares CF-PF (healthy teeth in a healthy mouth) samples with samples collected from a healthy tooth in a diseased mouth (CAE-PF and CA-PF) for taxa correlated with tooth health (green lines). (B) Compares Compares CF-PF (healthy teeth in a healthy mouth) samples with samples collected from diseased teeth in a diseased mouth (CAE-PE, CA-PE, and CA-PD) for taxa correlated with dental caries (red lines).

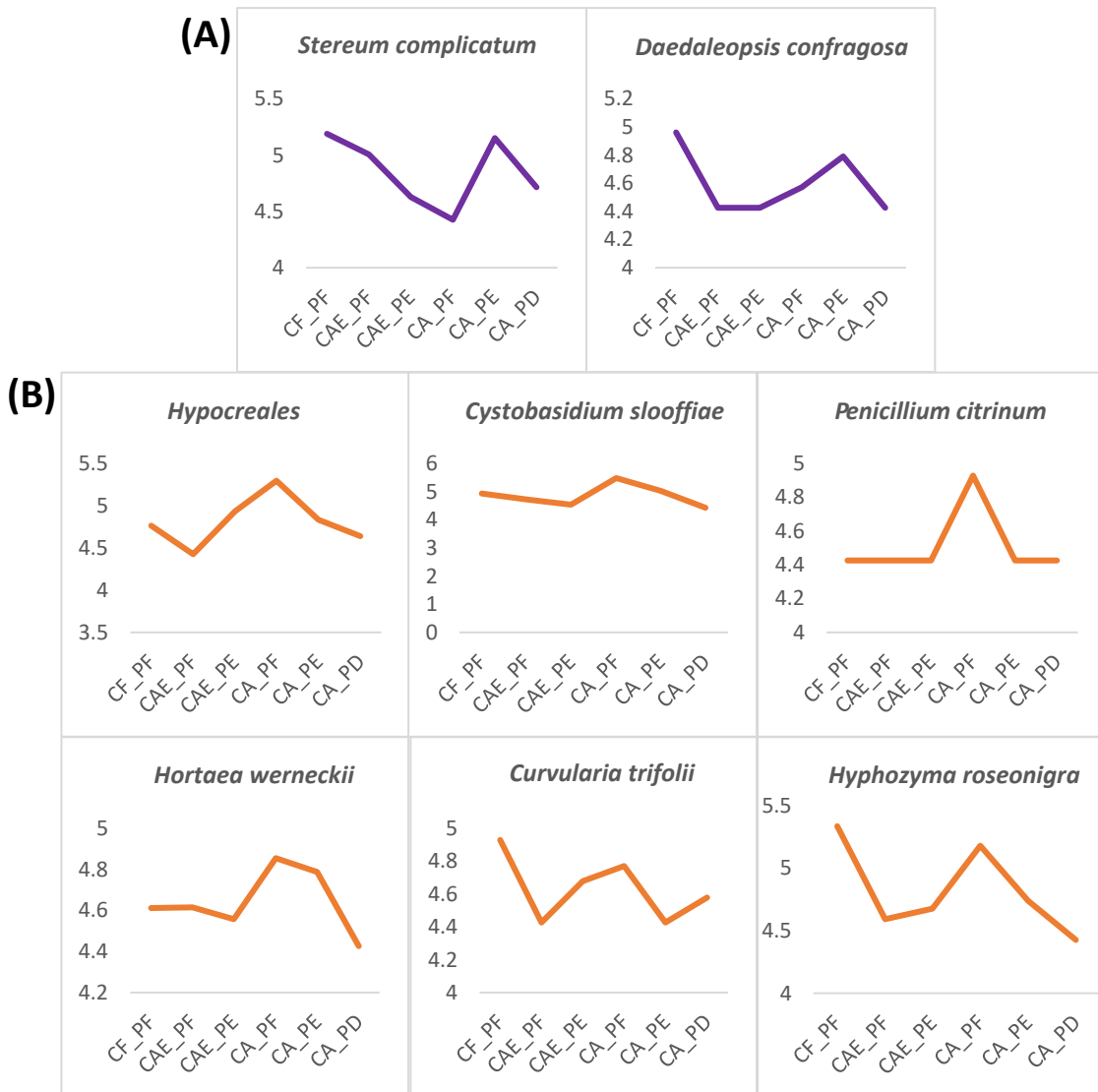


Figure S5: Significantly differentially abundant taxa enriched in dental caries and in health. (A) Two statistically significant taxa enriched in CA-PE samples. (B) The six statistically significant taxa enriched in CA-PF samples. All graphs were generated from a variance stabilizing transformation of counts within DESeq2.

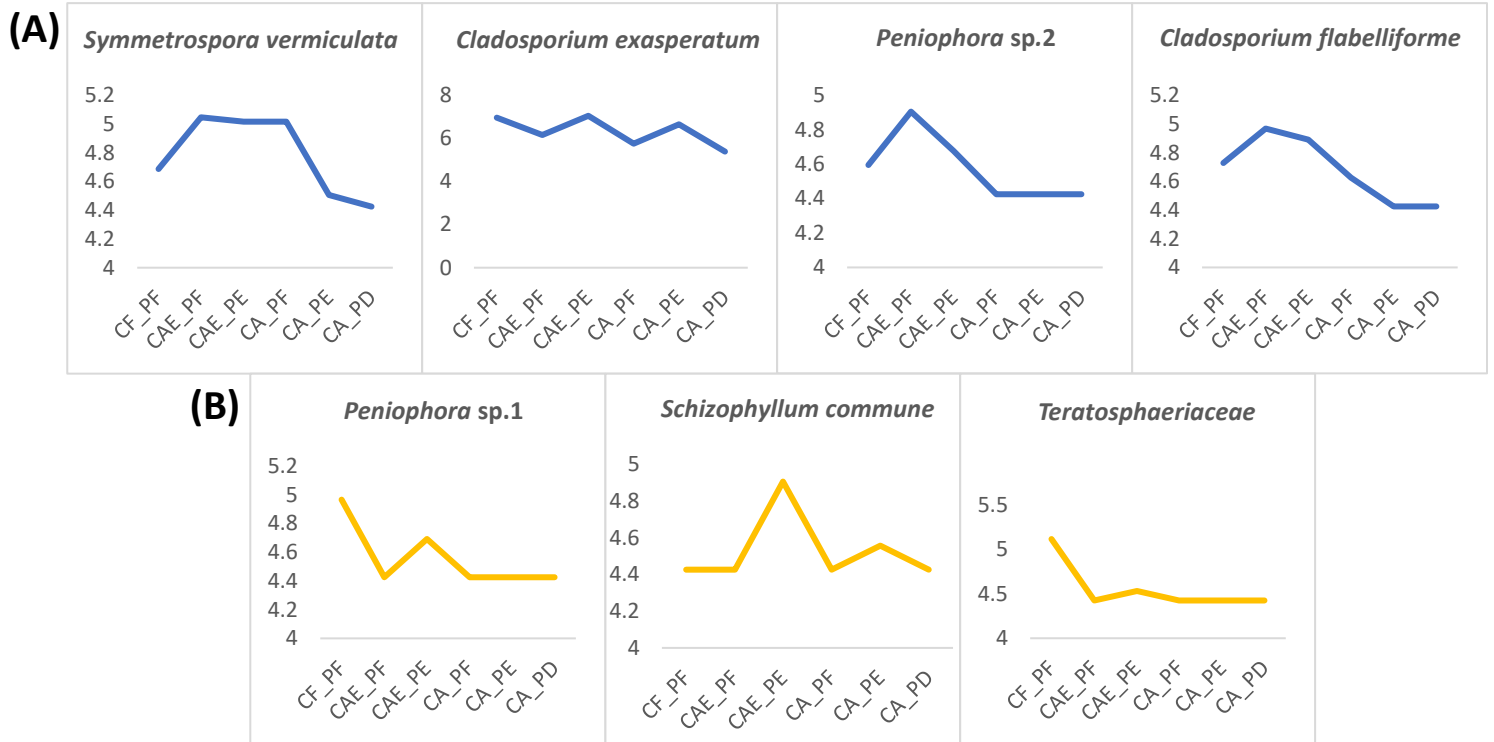


Figure S6: Significantly differentially abundant taxa enriched in dental caries and in health. (A) Four statistically significant taxa enriched in CAE-PF samples. (B) The three statistically significant taxa enriched in CAE-PE samples. All graphs were generated from a variance stabilizing transformation of counts within DESeq2.