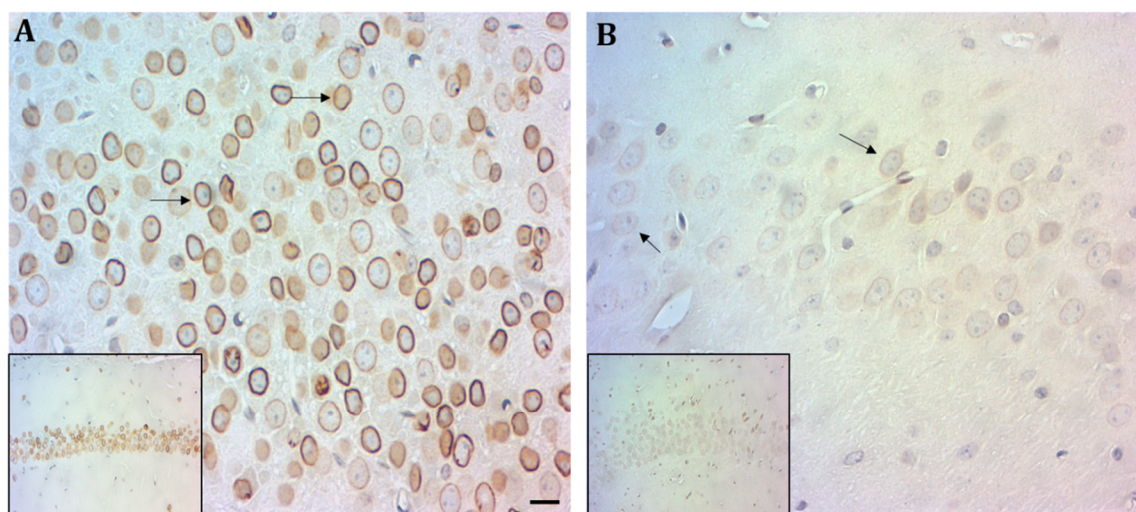


Supp. Figure S1 Lamin C. Immunopositivity to Lamin C antibody was clearly observed in the hippocampus of *wild type* mouse (A), triple transgenic AD mouse model (B) and human epidermis (C), but it was completely absent from human hippocampus (D), scale bar 10 μ m



Supp. Figure S2. Test of Lamin B2 and Lamin A in the triple transgenic AD mouse model. Populations of nucleoplasmic and perinuclear Lamin B2 (A,arrows) in the CA1 region (insert). Slight perinuclear Lamin A immunopositivity (B, arrows) in the CA1 region (insert). Scale bar 10 μ m