

## Supplementary material

**Table S1.** Comparison between worsening and non- worsening groups (increase in gingival bleeding) among all students (n = 457).

At Baseline	Worsening (n = 211)	Non-Worsening (n = 246)	p -Value
Age (years)	18.2 ± 0.4 <sup>1</sup>	18.2 ± 0.4	0.778 <sup>3</sup>
Sex (Male)	108 (51.2) <sup>2</sup>	109 (44.3)	0.142 <sup>4</sup>
OHI-S score	0.4 ± 0.4	0.7 ± 0.6	<0.001 <sup>3</sup>
BMI (kg/m <sup>2</sup> )	20.9 ± 3.1	20.5 ± 2.6	0.218 <sup>3</sup>
BOP (%)	18.3 ± 18.7	37.6 ± 24.7	<0.001 <sup>3</sup>
DMFT (number)	2.4 ± 2.9	2.2 ± 2.8	0.497 <sup>3</sup>
Daily brushing frequency (≥2 times)	169 (80.1)	205 (83.3)	0.371 <sup>4</sup>
Daily flossing (Yes)	10 (4.8)	16 (6.5)	0.417 <sup>4</sup>
Regular dental checkup (Yes)	32 (15.2)	38 (15.4)	0.934 <sup>4</sup>
PPD ≥4 mm (Yes)	29 (13.7)	40 (16.3)	0.454 <sup>4</sup>
Daily brushing frequency (Increased)	39 (18.5)	0 (16.3)	<0.001 <sup>4</sup>
Flossing (Increased)	16 (7.6)	37 (15.1)	0.013 <sup>4</sup>
Regular dental checkup (Increased)	11 (5.2)	31 (12.6)	0.006 <sup>4</sup>

OHI-S, simplified oral hygiene index; BMI, body mass index; BOP, bleeding on probing; DMFT, decayed, missing, and filled teeth; PPD, probing pocket depth. <sup>1</sup> mean ± standard deviation, <sup>2</sup> number (%), <sup>3</sup> unpaired *t*-test, <sup>4</sup> chi-square test.

**Table S2.** Comparison between worsening and non- worsening groups (increase in probing pocket depth) among all students (n = 457).

At Baseline	Worsening (n = 216)	Non-Worsening (n = 241)	p -Value
Age (years)	18.2 ± 0.4 <sup>1</sup>	18.2 ± 0.5	0.568 <sup>3</sup>
Sex (Male)	107 (49.5) <sup>2</sup>	110 (45.6)	0.405 <sup>4</sup>
OHI-S score	0.6 ± 0.5	0.5 ± 0.6	0.019 <sup>3</sup>
BMI (kg/m <sup>2</sup> )	20.8 ± 3.1	20.6 ± 2.6	0.375 <sup>3</sup>
BOP (%)	31.3 ± 23.7	26.4 ± 24.3	0.030 <sup>3</sup>
DMFT (number)	2.6 ± 2.9	2.1 ± 2.7	0.221 <sup>3</sup>
Daily brushing frequency (≥2 times)	167 (77.3)	208 (86.3)	0.012 <sup>4</sup>
Daily flossing (Yes)	13 (6.0)	13 (5.4)	0.774 <sup>4</sup>
Regular dental checkup (Yes)	26 (12.0)	44 (18.3)	0.065 <sup>4</sup>
PPD ≥4 mm (Yes)	45 (20.8)	24 (9.9)	0.001 <sup>4</sup>
Changes in oral health behaviors after 3 years			
Daily brushing frequency (Increased)	23 (10.6)	27 (11.2)	0.849 <sup>4</sup>
Flossing (Increased)	19 (8.8)	10 (4.14)	0.041 <sup>4</sup>
Regular dental checkup (Increased)	17 (7.9)	25 (10.4)	0.355 <sup>4</sup>

OHI-S, simplified oral hygiene index; BMI, body mass index; BOP, bleeding on probing; DMFT, decayed, missing, and filled teeth; PPD, probing pocket depth. <sup>1</sup> mean ± standard deviation, <sup>2</sup> number (%), <sup>3</sup> unpaired *t*-test, <sup>4</sup> chi-square test.

**Table S3.** Conditional odds ratios (ORs) and 95% confidence intervals (CIs) for increase in gingival bleeding or probing pocket depth among all students (n = 457).

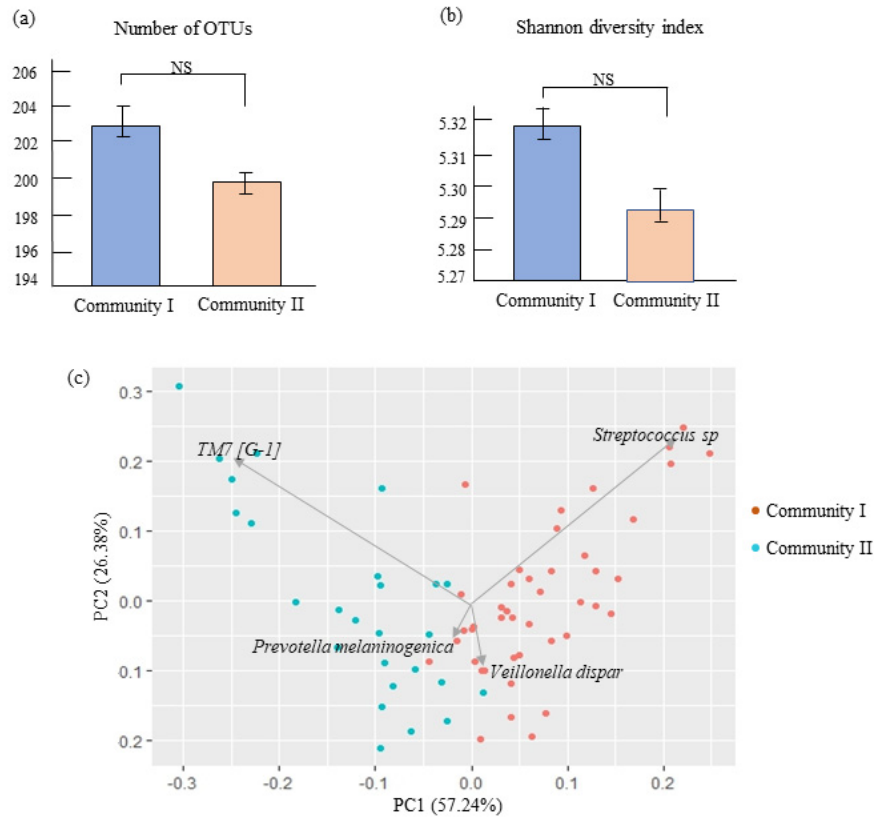
Dependent Variable	Independent Variable at Baseline		OR (95% CI) <sup>1</sup>	p-Value
Increase in BOP	Sex	Male	1	
		Female	0.65 (0.45–0.95)	0.028
		OHI-S score	0.32 (0.21–0.48)	<0.001
		BMI	1.03 (0.97–1.09)	0.301
	Daily brushing frequency	≥2 times	1	
		<2 times	0.85 (0.61–1.18)	0.338
	Daily flossing	Yes	1	
		No	1.46 (0.74–2.88)	0.275
	Regular dental checkup	Yes	1	
		No	1.05 (0.63–1.74)	0.849
	PPD ≥4 mm	No	1	
		Yes	0.88 (0.51–1.50)	0.632
Increase in PPD	Sex	Male	1	
		Female	0.92 (0.64–1.33)	0.685
		OHI-S score	1.33 (0.84–2.14)	0.221
		BMI	1.01 (0.96–1.08)	0.544
	Daily brushing frequency	≥2 times	1	
		<2 times	0.75 (0.54–1.04)	0.086
	Daily flossing	Yes	1	
		No	0.70 (0.36–1.37)	0.300
	Regular dental checkup	Yes	1	
		No	1.38 (0.83–2.31)	0.211
	PPD ≥4 mm	No	1	
		Yes	2.16 (1.24–3.75)	0.006

<sup>1</sup> Adjusted for sex, OHI-S, BMI, oral health behaviours and PPD ≥4 mm. Abbreviations: BOP, bleeding on probing; OHI-S, simplified oral hygiene index; BMI, body mass index; PPD, probing pocket depth.

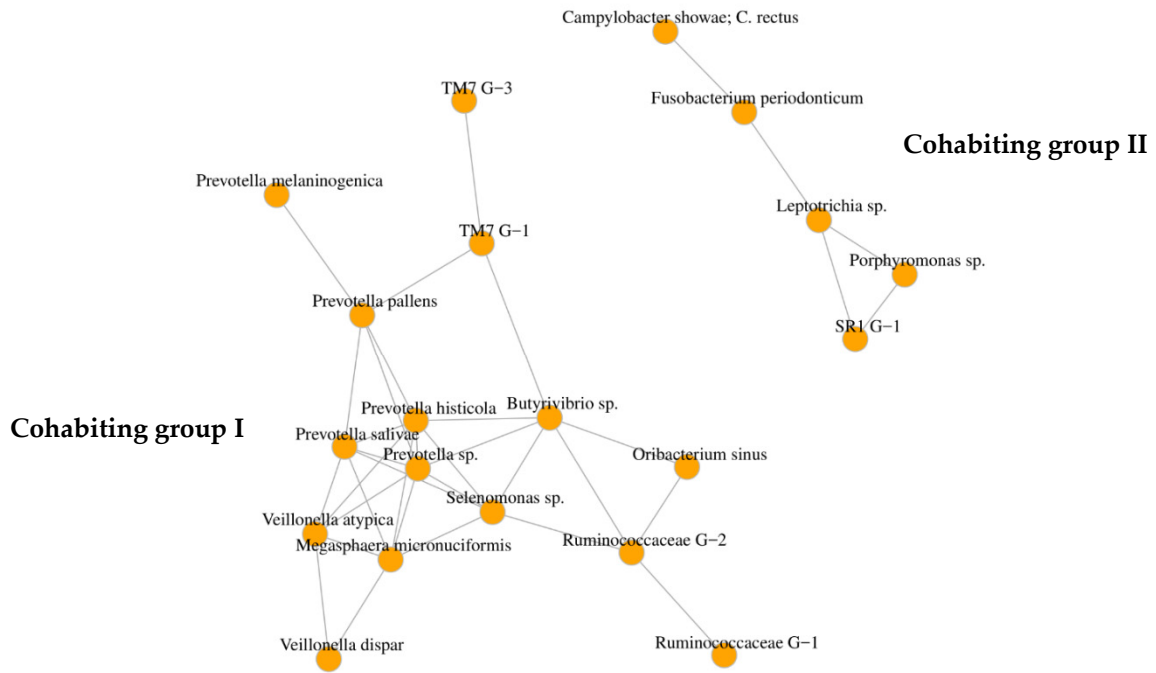
**Table S4.** Comparisons between the two communities.

Parameters	Community I (n = 43)	Community II (n = 26)	p-Value
Age (years)	21.3 ± 0.5 <sup>1</sup>	21.1 ± 0.3	0.201 <sup>3</sup>
Sex (Male)	12 (27.9) <sup>2</sup>	9 (34.6)	0.557 <sup>4</sup>
Daily brushing frequency (≥2 times)	36 (83.7)	23 (88.5)	0.588 <sup>4</sup>
Daily flossing (Yes)	12 (27.9)	3 (11.5)	0.110 <sup>4</sup>
Regular dental checkup (Yes)	12 (27.9)	3 (11.5)	0.110 <sup>4</sup>
PPD ≥4 mm (Yes)	29 (67.4)	14 (53.8)	0.259 <sup>4</sup>
OHI-S score	0.4 ± 0.5	0.4 ± 0.6	0.943 <sup>3</sup>
BOP (%)	34.2 ± 20.6	31.2 ± 21.9	0.565 <sup>3</sup>
BMI (kg/m <sup>2</sup> )	20.6 ± 3.3	20.4 ± 2.6	0.780 <sup>3</sup>

Abbreviations: OHI-S, simplified oral hygiene index; BOP, bleeding on probing; BMI, body mass index; PPD, probing pocket depth. <sup>1</sup> mean ± standard deviation, <sup>2</sup> number (%), <sup>3</sup> unpaired *t*-test, <sup>4</sup> chi-square test.



**Figure S1.** Differences in salivary microbiome between the two communities. (a) Mean number of operational taxonomic units (OTUs); (b) Shannon diversity index values and (c) Principal component analysis (PCA) of 69 participants (among two communities). There were no significant differences in number of OTUs, Shannon diversity index values and PCA between the community I and II.



**Figure S2.** Microbial co-occurrence networks of species. Co-occurrence networks were constructed based on the relative abundances of 28 species (mean  $\geq 1\%$ ). Each node represents species [in operational taxonomic units (OTUs)]. Only positive correlations between the two OTUs ( $p < 0.001$  by Spearman's rank-correlation test) are displayed. (Cohabiting group I; *TM7 [G-3]*, *TM7 [G-1]*, *Prevotella pallens*, *Prevotella melaninogenica*, *Prevotella histocola*, *Butyrivibrio sp.*, *Prevotella salivae*, *Prevotella sp.*, *Selenomonas sp.*, *Veillonella atypica*, *Megasphaera micronuciformis*, *Veillonella dispar*, *Oribacterium sinus*, *Ruminococcaceae [G-2]* and *Ruminococcaceae [G-1]*. Cohabiting group II; *Campylobacter showae*, *Campylobacter rectus*, *Fusobacterium periodonticum*, *Leptotrichia sp.*, *Porphyromonas sp.* and *SR1 [G-1]*).