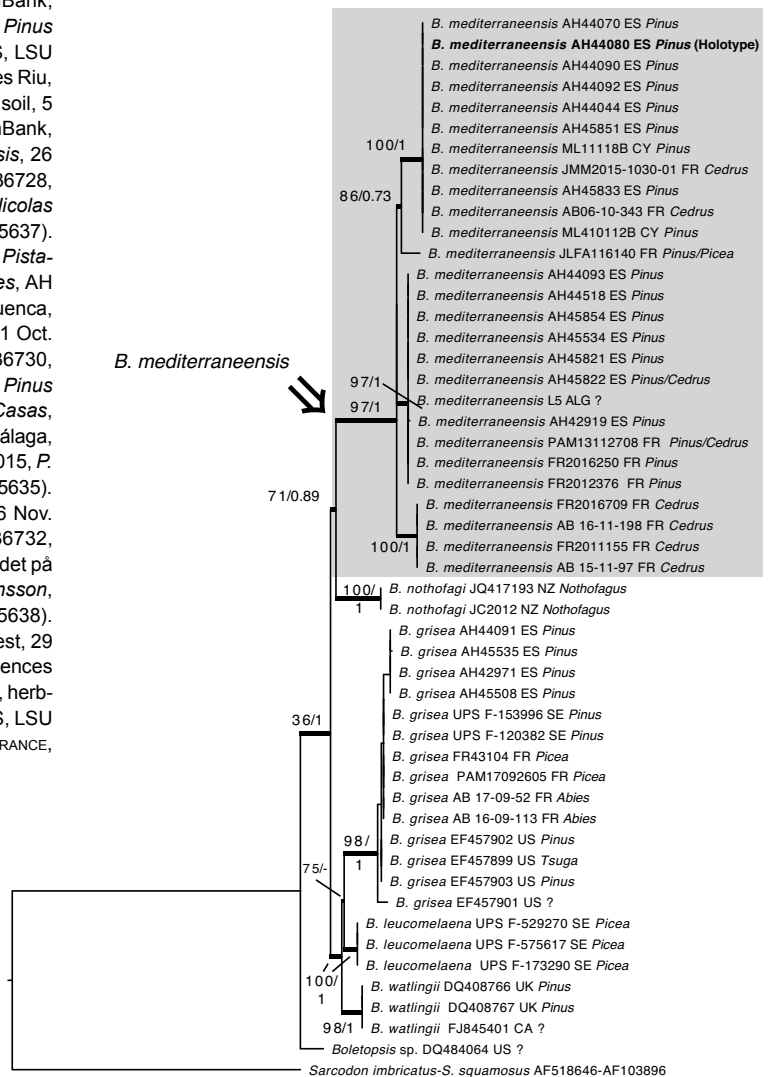


Fungal Planet 1001 – *Boletopsis mediterraneensis*

FP1001-1 Additional specimens examined.

Additional specimens examined. *Boletopsis mediterraneensis*: CYPRUS, Troodos, under *Pinus nigra* subsp. *pallasiana*, 8 Nov. 2011, *M. Loizides*, ML11118B (ITS sequence GenBank, MN536718); 21 Oct. 2014, ML410112B (ITS sequence GenBank, MN536719). FRANCE, under *Pinus halepensis*, 27 Oct 2002, *V. Dumas*, FR2016250 (ITS sequence GenBank, MN536726). Ardèche, Lagorce, under *Cedrus atlantica*, 1 Nov. 2015, *A. Bidaud*, AB 15-11-97 (ITS sequences GenBank, MN536736). Côte d'Or, Dijon, under *Cedrus atlantica*, 13 Nov. 2015, *J.-M. Moingeon*, FR2016709 (ITS sequence GenBank, MN536737). Drôme, Ourches, under *Cedrus atlantica*, Nov. 2016, *G. Essertier*, AB 16-11-198 (ITS sequence GenBank, MN536738). Gard, Mialet, under *Cedrus atlantica*, 30 Oct. 2015, *J.-M. Moingeon*, JMM2015-1030-01 (ITS sequences GenBank, MN536752). Hérault, Lauret, under *Pinus halepensis* and *Cedrus sp.*, 27 Nov. 2013, *P.-A. Moreau*, PAM13112708 (ITS sequences GenBank, MN536727); Montarnaud, under *Pinus halepensis* and *Quercus spp.*, 15 Nov. 2012, *Franck Richard*, FR2012376 (ITS, LSU sequences GenBank, MN536716). Isère, Mens, under *Pinus sylvestris* and *Picea abies*, 1 Nov. 2011, *J.-L. Fasciotto*, JLFA116140 (ITS sequence GenBank, MN536734). Vaucluse, Bonnieux, under *Cedrus atlantica*, 1 Oct. 2006, *A. Bidaud*, AB 06-10-343 (ITS sequence GenBank, MN536717) and 27 Nov. 2011, *J.-M. Bellanger*, FR2011155 (ITS sequence GenBank, MN536735). SPAIN, Segovia, El Espinar, under *Pinus pinaster*, 14 Nov. 2010, *S. Métrida*, AH 44092 (ITS, LSU sequences GenBank, MN536721, MN535627). Guadalajara, crta. Tamajón a Majaelrayo, under *Pinus nigra*, basic soil, 15 Nov. 2013, *J.L. Manjón*, AH 44044 (ITS, LSU sequences GenBank, MN536715, MN535625). Guadalajara, crta. Tamajón a Majaelrayo, under *Pinus nigra*, 15 Nov. 2013, *J.L. Manjón*, AH 44070 (ITS, LSU sequences GenBank, MN536724, MN535630). Badajoz, Fuenlabrada de los Montes, under *Pinus pinaster* y *Quercus faginea*, 28 Nov. 2009, *E. Andrés*, AH 44090 (ITS, LSU sequences GenBank, MN536722, MN535628). Ibiza, Santa Eulària des Riu, Atoloia de Sant Llorenç, 31SCD6817, under *Pinus halepensis*, basic soil, 5 Dec. 2009, *JLS 2945* (duplo in AH 44093 ITS, LSU sequences GenBank, MN536725, MN535631). Lleida, Llimiana, forest with *Pinus halepensis*, 26 Oct. 2014, *J. Montón*, AH 45534 (ITS, LSU sequences GenBank, MN536728, MN535632). Barcelona, Gavá, under *Pinus pinaster*, 23 Oct. 2014, *Nicolas del Arco*, AH 44518 (ITS, LSU sequences GenBank, MN536733, MN535637). Cádiz, Sanlúcar de Barrameda, pinar de la Algaida, Doñana, under *Pistacia lentiscus* with *Pinus pinea*, 21 Dec. 2011, *M. Becerra & E. Robles*, AH 42919 (ITS, LSU sequences GenBank, MN536729, MN535633). Cuenca, El Cubillo, Ribazo Gordo, under *Pinus pinea* and *Cedrus deodara*, 11 Oct. 2015, *P. Daniëls*, AH 45822 (ITS, LSU sequences GenBank, MN536730, MN535634). Huesca, San Saturnino, Rodellar, Bierge, 750 m, under *Pinus sylvestris* and *Quercus faginea*, 12 Oct. 2015, *A. Palazón & L. Rubio Casas*, AH 45851 (ITS, LSU sequences GenBank, MN536720, MN535626). Málaga, Montes de Málaga, Las Cantadoras, under *Pinus halepensis*, 5 Dec. 2015, *P. Daniëls*, AH 45854 (ITS, LSU sequences GenBank, MN536731, MN535635). Teruel, entre Valdelinares y Mosqueruela, under *Pinus sylvestris*, 16 Nov. 2016, *T. Melo*, AH 45821 (ITS, LSU sequences GenBank, MN536732, MN535636). ***Boletopsis leucomelaena*:** SWEDEN, Harg par, Kvarngården på Tvärnö, under *Picea abies*, herb-rich old forest, 12 Sept. 2003, *G. Aronsson*, UPS F-173290, (ITS, LSU sequences GenBank, MN536739, MN535638). Uppsala par., Uppsala, Nästen, acidic *Picea* and *Populus tremula* forest, 29 Aug. 2005, *I. Olariaga & A. Felipe*, UPS F-575617, (ITS, LSU sequences GenBank, MN536740, MN535639). Medelpad, Tuna par., Vattjomåsen, herb-rich *Picea abies* forest, 27 Aug. 2010, *S. Muskos*, UPS F-529270, (ITS, LSU sequences GenBank, MN536741, MN535640). ***Boletopsis grisea*:** FRANCE,

Haute-Loire, Cistrières, under *Abies alba*, Sept. 2016, *A. Bidaud*, AB 16-09-113 (ITS sequence GenBank, MN536743); La Chaise-Dieu, under *Pinus sylvestris*, 2 Sept. 2018, *P. Chapon*, FR43104 (ITS sequence GenBank, MN536746). Puy-de-Dôme, Fournols, under *Abies alba*, 24 Sept. 2017, *A. Bidaud*, AB 17-09-52 (ITS sequence GenBank, MN536744). Haute-Savoie, Chamonix, under *Picea abies*, 26 Sept. 2017, *P.-A. Moreau*, PAM17092605 (ITS sequence GenBank, MN536745). SWEDEN, Uppland, Älvkarleby par., gammal grustäkt 1.2 km NNÖ om Marma kyrka, among mosses and reindeer lichens under 120-year-old *Pinus sylvestris* forest, 28 Sept. 2005, *G. Aronsson*, UPS F-120382, (ITS, LSU sequences GenBank, MN536751, MN535646). Medelpad, Njurunda par., Sundsvall, Njurunda, Bergafjärdens camping, *Pinus sylvestris* forest near the coast, on sand dunes, 22 Sept. 2008, *Siw Muskos* no 08-018, UPS F-153996, ITS, LSU sequences GenBank, MN536742, MN535641). SPAIN, Madrid, La Barranca de Navacerrada, humus de *Pinus sylvestris*, 23 Oct. 2014, *M. Benito*, AH 45535 (ITS, LSU sequences GenBank, MN536749, MN535644). Madrid, Hueco de San Blas, Soto del Real, under *Pinus sylvestris*, 12 Oct. 2014, *L. Fernández Hermoso*, AH 45508 (ITS, LSU sequences GenBank, MN536750, MN535645). Madrid, Villa del Prado, humus de *Pinus pinaster*, 30 Nov. 2013, *J.C. Campos*, AH 44091 (ITS, LSU sequences GenBank, MN536748, MN535643). Huelva, Moguer, Cuesta Maneli, dunes with *Pinus pinea*, *Cistus salviaefolius*, *Halimium calycinum* and *H. halimifolium*, 14 Jan. 2012, *Asoc. Bot. Micol. Jaen*, AH 42971 (ITS, LSU sequences GenBank, MN536747, MN535642).



0.03

FP1001-2 The single best tree resulting from the Maximum Likelihood analysis of the ITS-LSU regions of *Boletopsis*. Maximum Likelihood bootstrap values (ML-BP) and Bayesian posterior probabilities (PP) are shown by branches, ordered as ML-BP/PP. Thickened branches received support at least in one analysis (ML-BP ≥ 70% and/or PP ≥ 95%). The holotype of *B. mediterraneensis* is marked in bold.