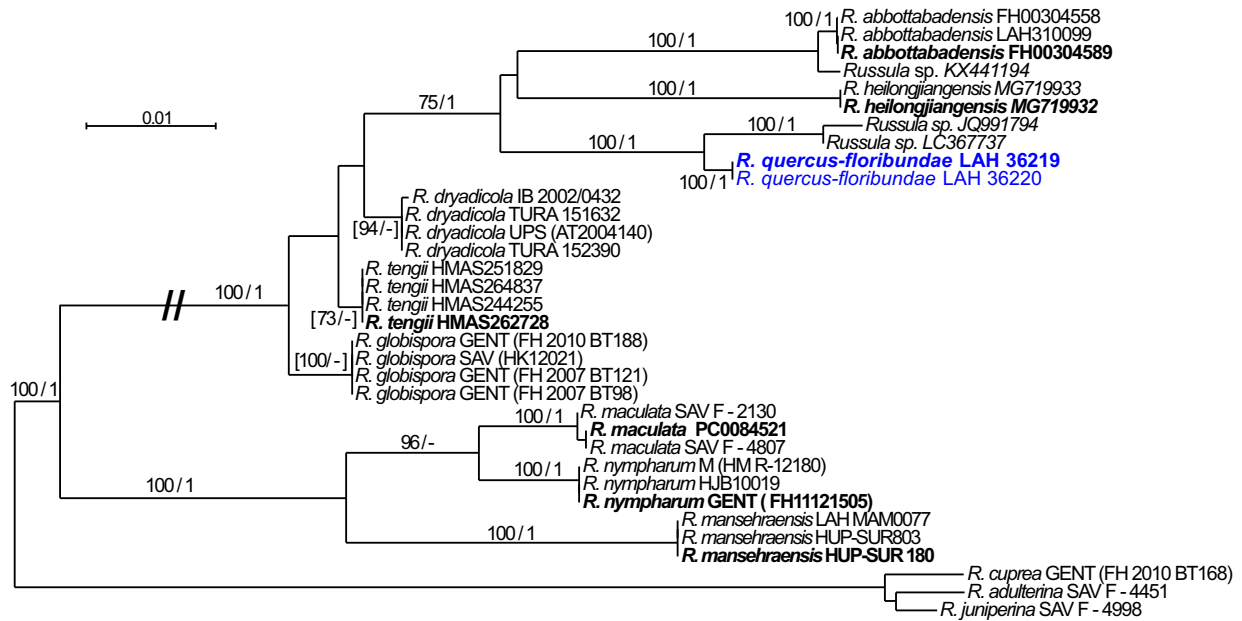


Fungal Planet 1030 – *Russula quercus-floribundae*

**FP1030** Maximum likelihood phylogeny computed in RAxML (Stamatakis 2008) inferred from three loci (nrITS, mtSSU, rpb2), rooted to *Russula juniperina*. Bootstrap support values followed by Bayesian posterior probabilities computed in Mr.Bayes v. 3.2 (Ronquist et al. 2012) are indicated at the nodes with the estimated threshold 70 % / 0.95. All analyses (partitioning, RAxML, Mr.Bayes) were computed using CIPRES portal ([http://www.phylo.org/sub\\_sections/portal/](http://www.phylo.org/sub_sections/portal/)). Types are labeled in **bold** and newly sequenced collections in blue. Species names are followed by herbarium code or GenBank accession numbers in *italics*.