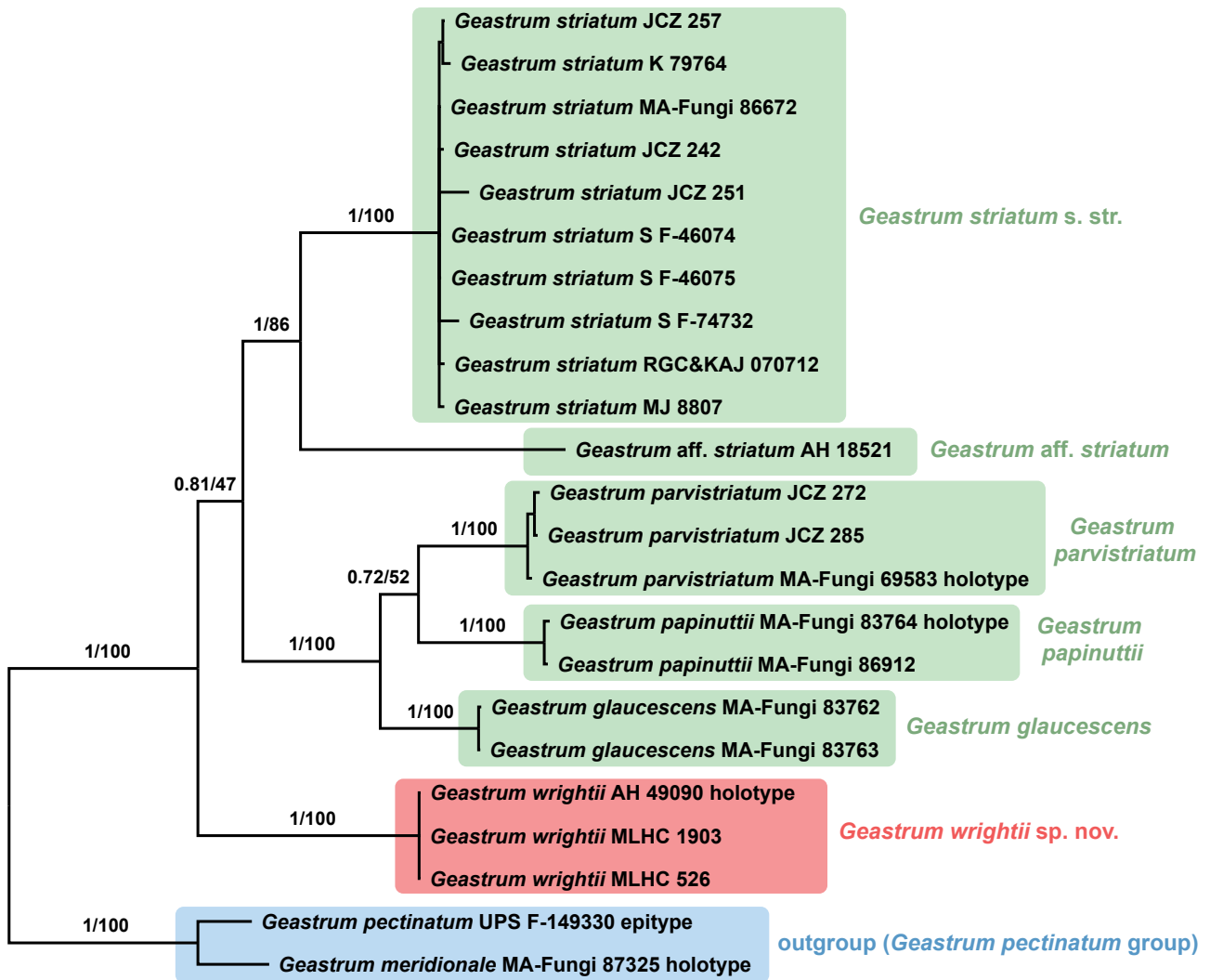


Fungal Planet 1014 – *Geastrum wrightii*

FP1014 Fifty percent majority-rule Bayesian phylogram for the *G. striatum* and *G. glaucescens* groups, obtained in MrBayes v. 3.2 (Ronquist et al. 2012), using the settings indicated in Zamora et al. (2017), based on a concatenated alignment with the following partitions: i) ITS1 + ITS2 + *RPB1* third codon position, *RPB1* introns 1, 3 and 4 + *ATP6* first codon position; ii) 5.8S + 28S + *RPB1* first and second codon positions; iii) *RPB1* intron 2 + *ATP6* second codon position; and iv) *ATP6* third codon position (partitioning scheme selected in IQ-Tree, with edge-linked branch lengths and independent substitution rates, Nguyen et al. 2015). Statistical support on the branches means posterior probabilities from the Bayesian analysis, and bootstrap values based on 1 000 non-parametric replicates in IQ-Tree.