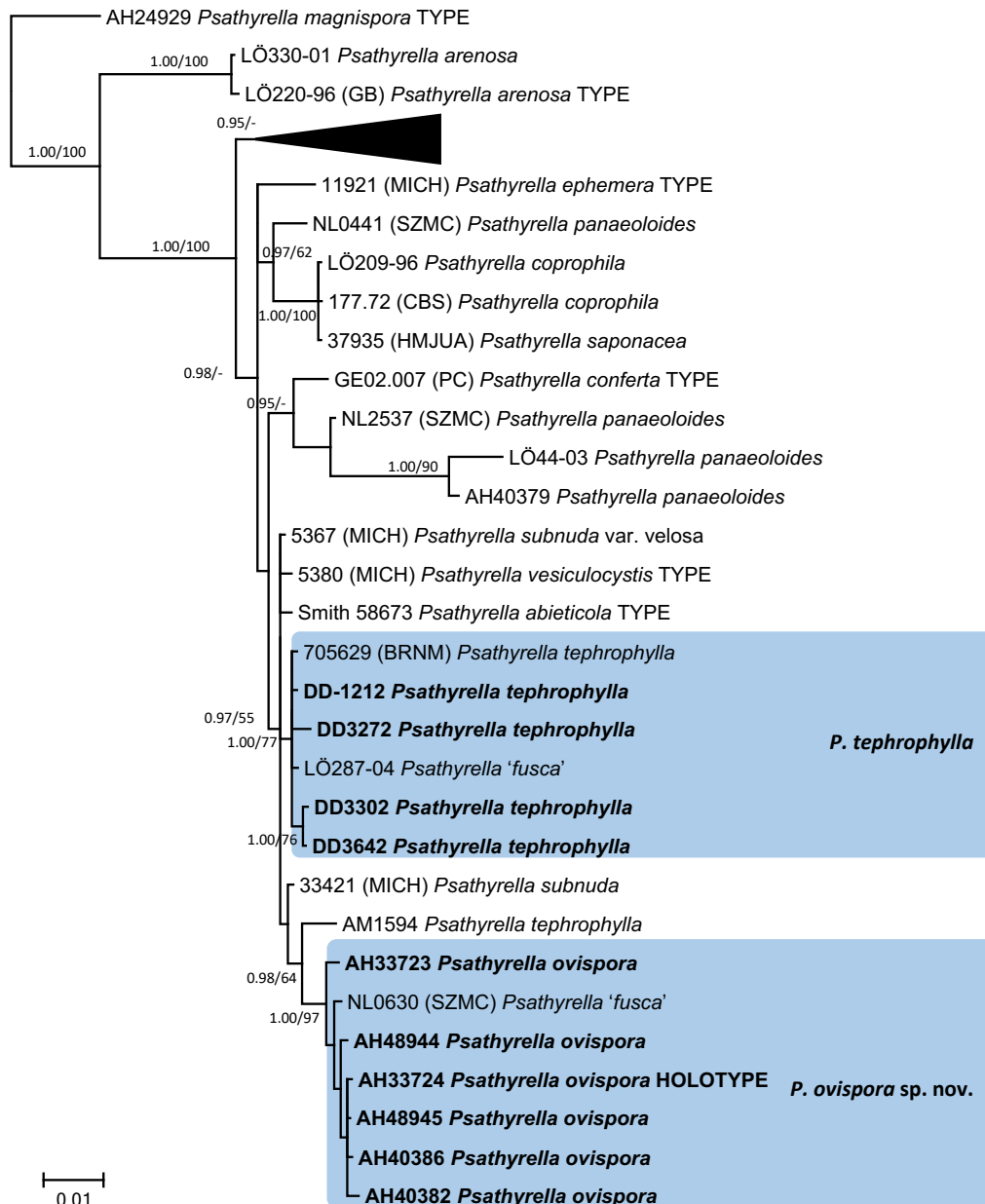


Fungal Planet 1025 – *Psathyrella ovispora*

## FP1025-1 Additional specimens examined.

**Additional specimens examined. *Psathyrella ovispora*:** SPAIN, Madrid, Alcalá de Henares, El Gurugú, on nitrified calcareous loamy soil, among grass with *Conium maculatum* and *Urtica urens*, 2 Dec. 2016, G. Moreno & M. Heykoop, paratype AH 33723, ITS and LSU sequences GenBank MF966496 and MN190261; Madrid, Alcalá de Henares, Campus of the University of Alcalá, Faculty of Sciences, in nitrified calcareous meadow under *Foeniculum vulgare*, 27 Oct. 2006, F. Esteve-Raventós paratype AH 40386, ITS sequence GenBank MF966503; Madrid, Alcalá de Henares, Campus of the University of Alcalá, Faculty of Sciences, in nitrified calcareous meadow, 26 Oct. 2012, J. Rejos & F. Esteve-Raventós, paratype AH 40382, ITS sequence GenBank MN190257; Madrid, Alcalá de Henares, Campus of the University of Alcalá, Faculty of Sciences, in nitrified calcareous meadow, 13 Mar. 2018, J.A. Picado, paratype AH 48944, ITS and LSU

sequences GenBank MN190258 and MN190262; *ibid.*, paratype AH 48945, ITS and LSU sequences GenBank MN190259 and MN190263. ***Psathyrella tephrophylla*:** BELGIUM, Steenokkerseel, in a mixture of humus and mulch under deciduous trees, 10 Dec. 2017, D. Deschuyteneer, (D. Deschuyteneer private herbarium) DD 3272, ITS sequence GenBank MK577903; Melsbroek, Brabantse golf, in a mixture of humus and mulch under deciduous trees, 14 Dec. 2017, D. Deschuyteneer, DD 3302, ITS sequence GenBank MK577904; Kortenberg, Plantsonbos, in a mixture of humus and mulch under deciduous trees, 20 Oct. 2017, D. Deschuyteneer, DD 3642, ITS sequence GenBank MK577902; Fosses-la-Ville, Lac de Bambois, in a mixture of humus and mulch under deciduous trees, 4 Oct. 2018, D. Deschuyteneer, DD 1212, ITS sequence GenBank MK583508.



**FP1025-2** 50 % majority rule ITS-28S rDNA consensus phylogram of the *pygmaea* clade of *Psathyrella* (as delimited in Örstadius et al. 2015), with *P. magnispora* as outgroup. It was obtained in MrBayes from 3900 sampled trees. Values next to nodes represent Bayesian PP and Maximum Likelihood BP. Only nodes supported by > 0.95 PP or > 70 % BP were annotated. Several clades around *P. pygmaea* were condensed (black triangle), and the rooting branch was reduced for publishing. **Bold** names represent samples sequenced in the present work.