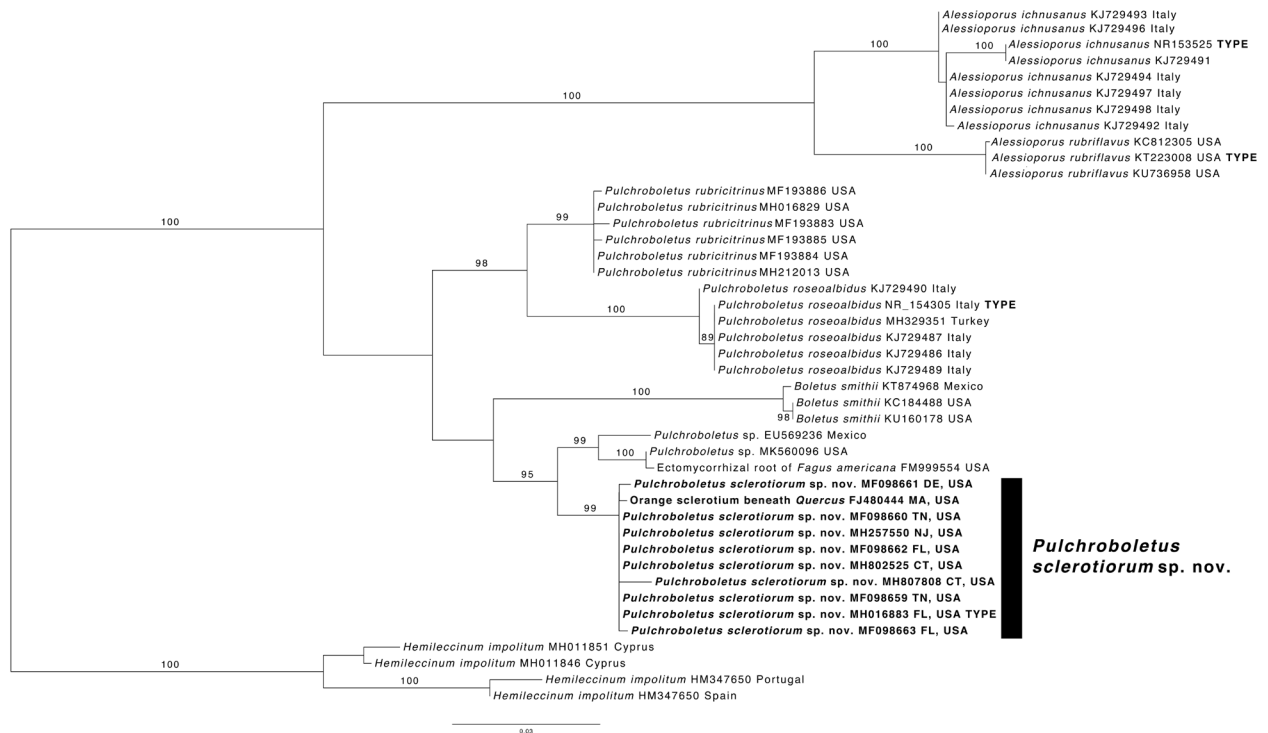


## Fungal Planet 1029 – *Pulchroboletus sclerotiorum*

### FP1029-1 Additional specimens examined.

*Additional materials examined.* USA, Connecticut, Rocky Neck State Park, Lyme, beneath *Quercus*, *Robert of the Connecticut Mycoflora Project*, Mushroom Observer #325447 (Northeast Bolete Consortium), ITS sequence GenBank MH807808; Delaware, New Castle County, Wilmington, Brightwurst Woods, beneath *Fagus* and *Liquidambar*, 2 Aug. 2016, *M. Smiley*, MES2190 (FLAS-F-60335), ITS sequence GenBank MF098661; Florida, Lake County, Clermont, 21 Aug. 2016, *J. Bolin*, MES2188 (FLAS-F-60336), ITS sequence GenBank MF098663; Putnam County, Ordway-Swisher Biological Station, 11 Oct. 2016, *M.E. Smith & P. Kennedy*, MES2198 (FLAS-F-60338), ITS sequence GenBank MF098663; Massachusetts, Middlesex County, Arling-

ton, western side of Arlington's Great Meadow park, in *Quercus*-dominated woods, 19 Aug. 2008, *M.E. Smith*, MES-260 (FH), ITS sequence GenBank FJ480444 (orange sclerotia discussed in Smith & Pfister 2009, photo in Smith et al. 2015); New Jersey, Burlington County, Westampton Township, Rancocas State Park, oak and pine woods, 10 July 2016, *I.G. Safonov*, Mushroom Observer #243879 (Safonov Personal Herbarium, ITS, LSU and *tef1* sequences GenBank MH257550, MH257545 and MH337281); Tennessee, Anderson County, Oak Ridge, beneath *Quercus*, 17 Aug. 2015, *H. Hitchcock*, ARB1368 (FLAS-F-60334, ITS, *rpb2* and *tef1* sequences GenBank MF098660, MF614164 and MH337301).



**FP1029-2** Phylogenetic tree based on Maximum Likelihood analysis of ITS rDNA in RAxML v. 8 shows the placement of *Pulchroboletus sclerotiorum* among *Pulchroboletus* and *Alessioporos* species (Boletaceae, Boletales). *Hemileccinum impolitum* served as the outgroup.