

Supporting information

Serelaxin and the AT₂ receptor agonist, CGP42112 evoked similar, non-additive, cardiac anti-fibrotic effect in high salt-fed mice that were refractory to candesartan cilexetil

Yan Wang^{1,2*}, Lei Han^{1,2}, Matthew Shen^{1,2}, Emma S. Jones^{1,2}, Iresha Spizzo^{1,2}, Sarah L Walton^{1,3}, Kate M Denton^{1,3}, Tracey A. Gaspari^{1,2}, Chrisan S. Samuel^{1,2}, Robert E. Widdop^{1,2}

¹Cardiovascular Disease Program, Biomedicine Discovery Institute and Departments of ²Pharmacology and ³Physiology, Monash University, Clayton, Victoria, 3800 Australia

* Author for correspondence

Table of contents (4 pages total)

Figure S-1 depicts fuller blot of that shown in Fig 3A, 4A and 4C.....	S-2
Figure S-2. All western blots for data in Figure 3B.....	S-3
Table S-1. Animal body weight data.....	S-4

Figure S-1 depicts fuller blot of that shown in Fig 3A, 4A and 4C

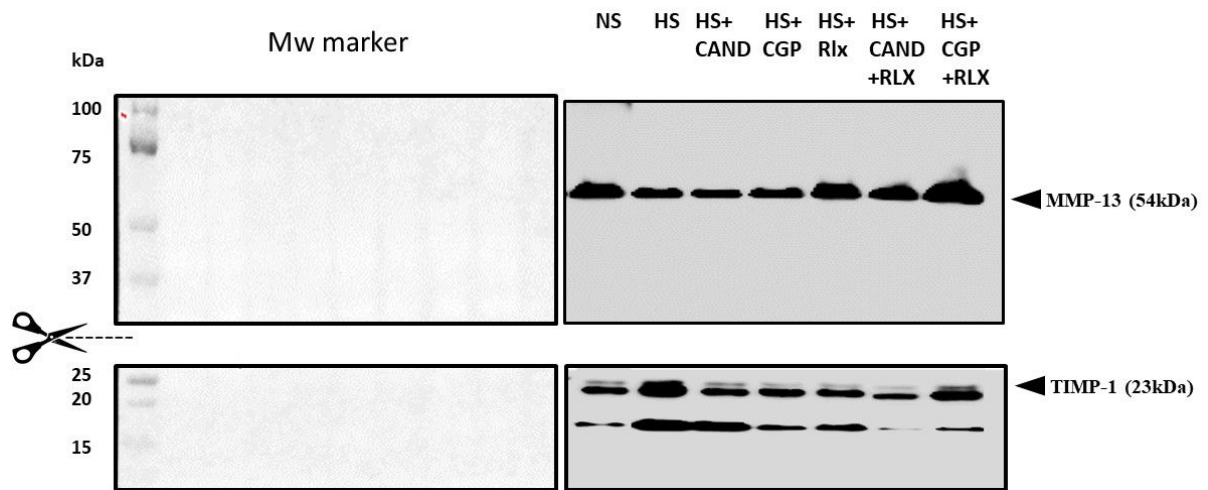
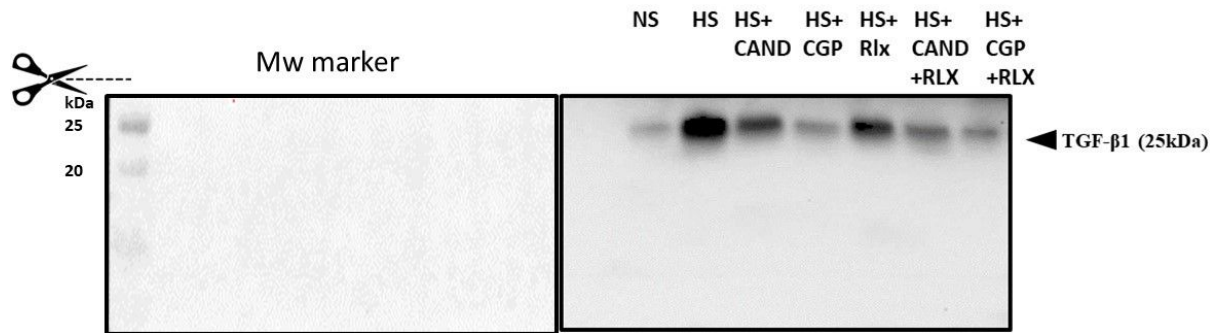


Figure S-2. Additional western blots for all data in Figure 3B

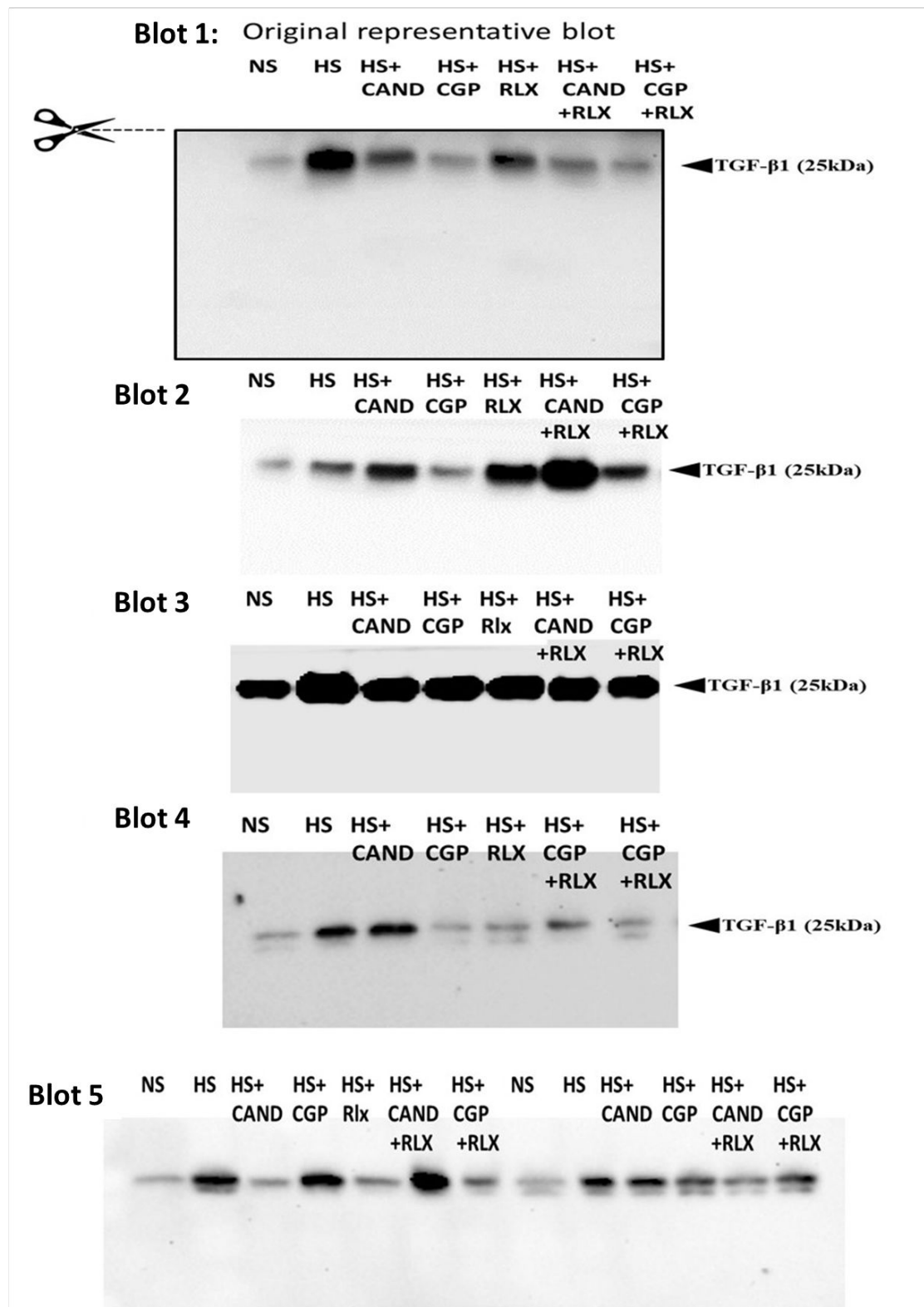


Table S-1. Body weights over 8-week period of HS diet ± drug treatments

	Week 0 (g)	Week 4 (g)	Week 8 (g)
NS	30.2±0.7	32.3±0.8	32.1±1.0
HS	27.7±0.8	29.4±1.1	29.2±1.0
HS+CAND	27.9±0.5	28.7±0.8	29.7±0.7
HS+CGP	27.9±0.6	30.0±0.6	31.5±0.7
HS+RLX	30.4±1.2	33.8±1.5	35.3±1.2
HS+CAND+RLX	31.6±1.2	34.5±1.4	35.2±0.7
HS+CGP+RLX	29.6±1.1	31.9±1.2	34.8±0.9