

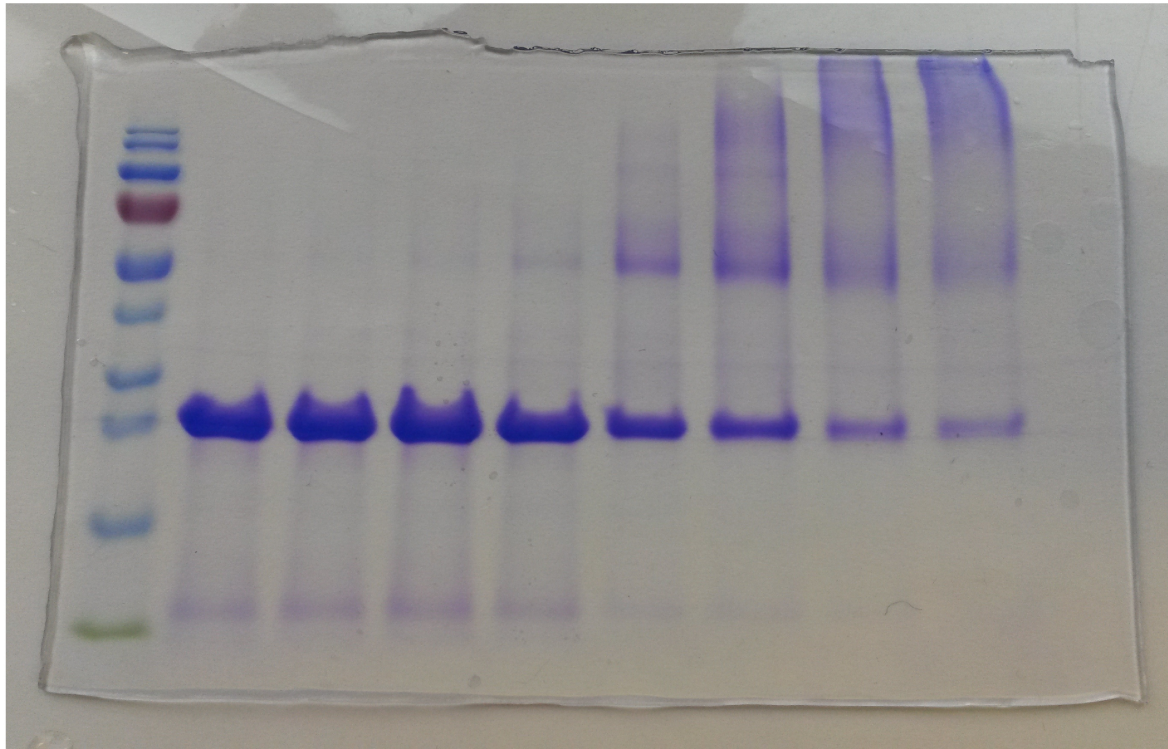
Fig 2D.

glutaraldehyde concentration

MW

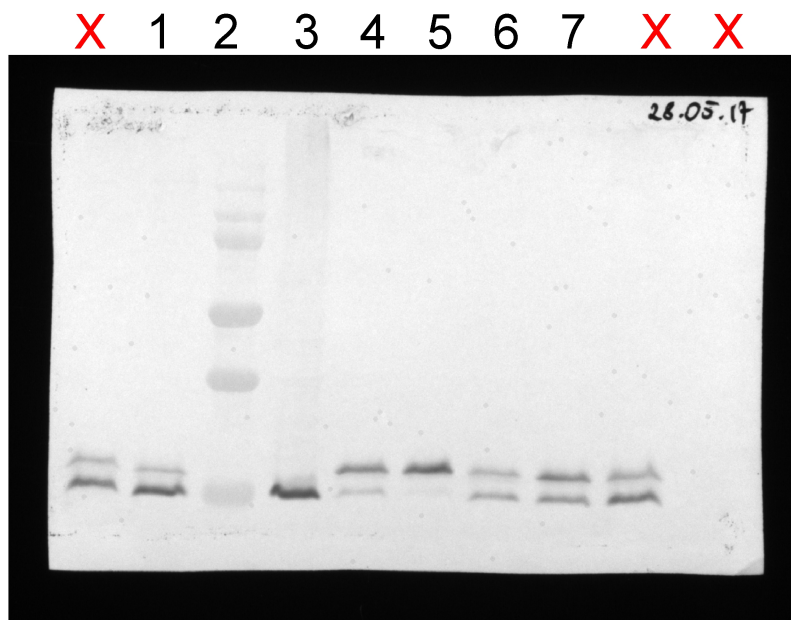
0%

0,02%



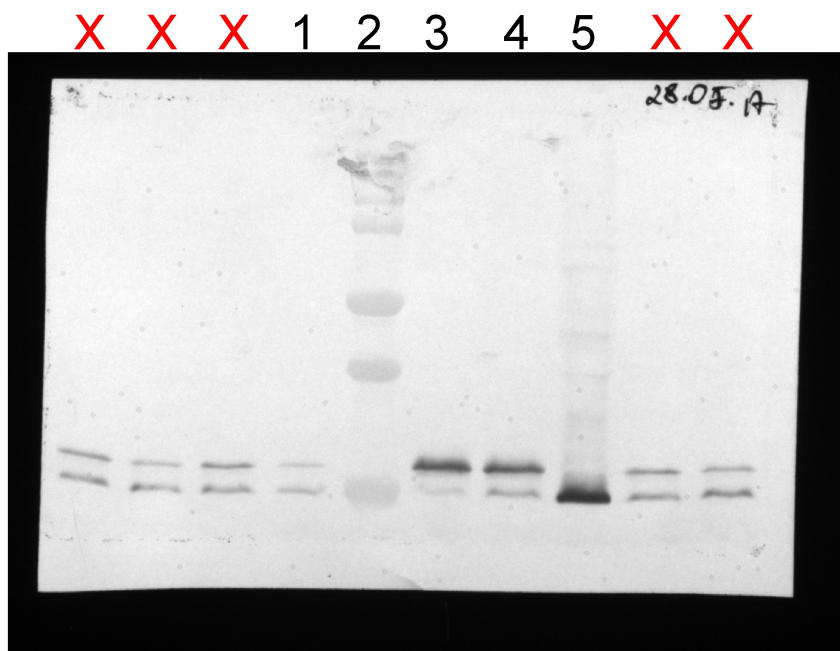
captured using mobile phone

Fig 3A



- 1 - $\Delta dsbD$ + AMS
- 2 - MW
- 3 - WT
- 4 - WT + AMS
- 5 - WT + DTT + AMS
- 6 - $\Delta dsbI$ + AMS
- 7 - $\Delta dsbB$ + AMS

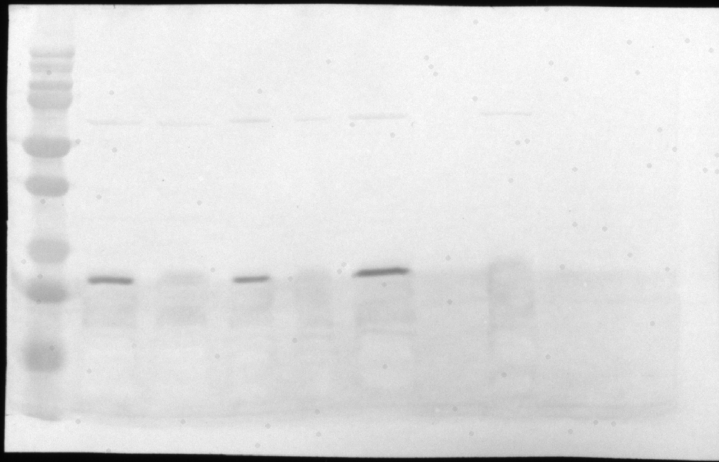
Fig 3B



- 1 - $\Delta dsbA1$ + AMS
- 2 - MW
- 3 - WT+DTT + AMS
- 4 - WT + AMS
- 5 - WT

Fig 4A

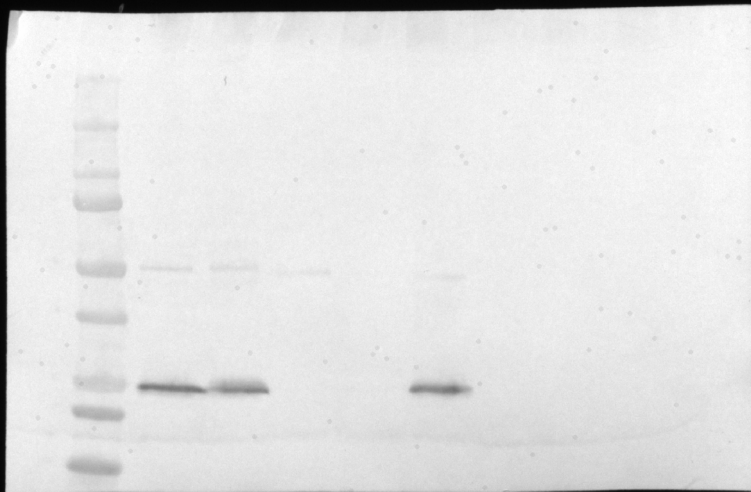
1 2 3 4 5 6 X X X X



- 1 - Molecular weight marker
- 2 - *C. jejuni* 81116 WT
- 3 - $\Delta dsbA1$
- 4 - $\Delta c8j_1298$
- 5 - $\Delta dsbA1\Delta c8j_1298$
- 6 - $\Delta dsbA1\Delta c8j_1298/chrA1$

Fig 4B

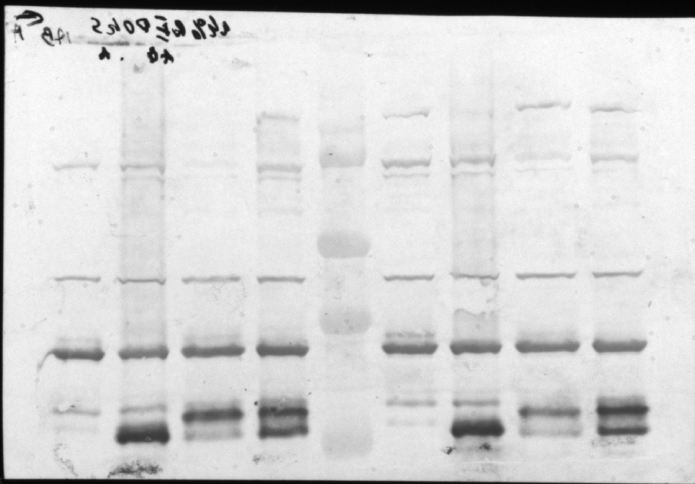
X 1 2 3 4 5 6 X X X X



- 1 - Molecular weight marker
- 2 - *C. jejuni* 81116 WT
- 3 - $\Delta dsbA1$
- 4 - $\Delta c8j_1298$
- 5 - $\Delta dsbA1\Delta c8j_1298$
- 6 - $\Delta dsbA1\Delta c8j_1298/chr1298$

Fig 7A

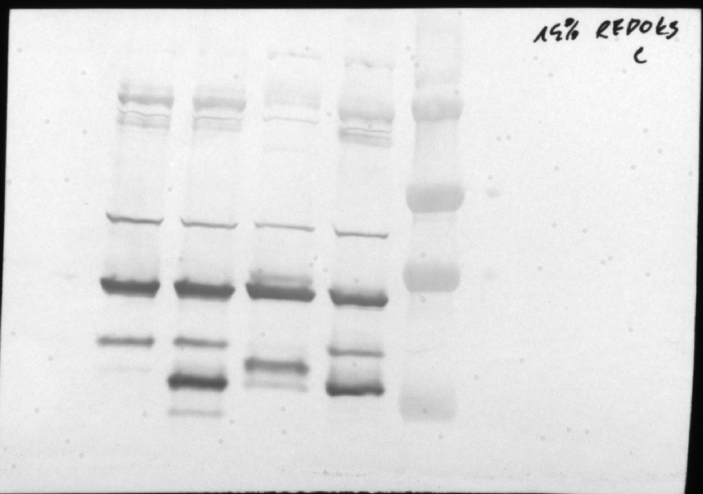
1 2 3 4 5 6 7 8 9



- 1 - $\Delta dsbA$
- 2 - $\Delta dsbA/pI1298$
- 3 - $\Delta dsbA/pI1298 + DTT + AMS$
- 4 - $\Delta dsbA/pI1298 + AMS$
- 5 - Molecular weight marker
- 6 - $\Delta dsbA\Delta dsbB$
- 7 - $\Delta dsbA\Delta dsbB/pI1298$
- 8 - $\Delta dsbA\Delta dsbB/pI1298 + DTT + AMS$
- 9 - $\Delta dsbA\Delta dsbB/pI1298 + AMS$

Fig 7B

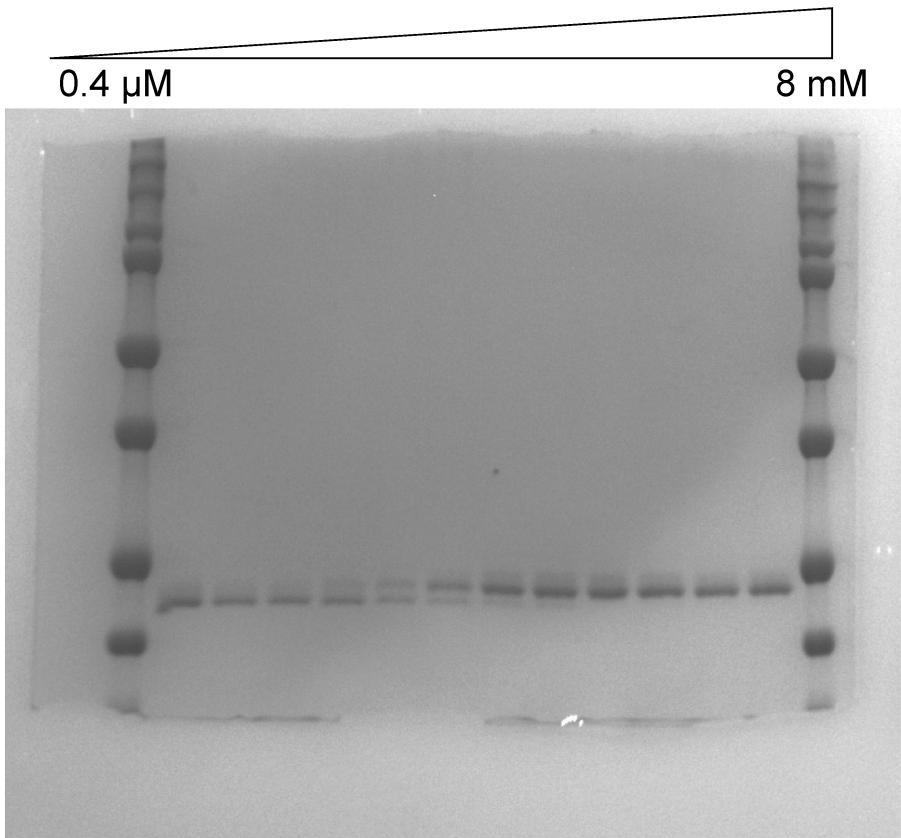
X 1 2 3 4 5 X X X



- 1 - $\Delta dsbC$
- 2 - $\Delta dsbC/pI1298$
- 3 - $\Delta dsbC/pI1298 + DTT + AMS$
- 4 - $\Delta dsbC/pI1298 + AMS$
- 5 - Molecular weight marker

S2 Fig

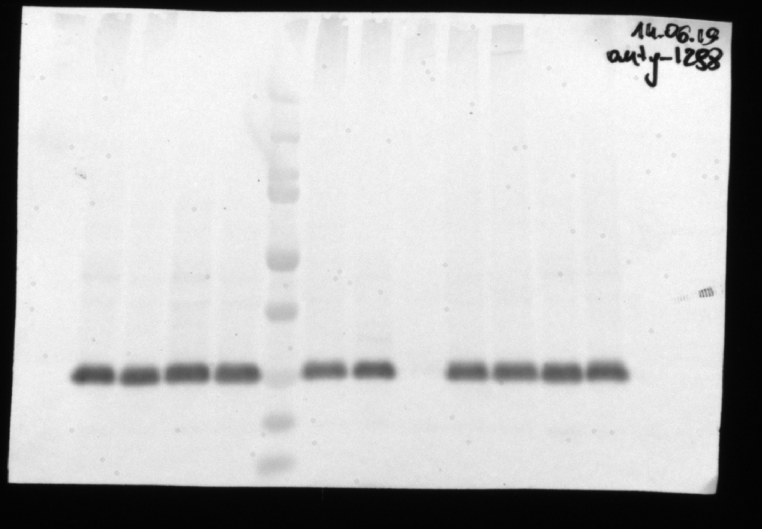
glutathione reduced (GSH)
concentration



captured using Bio-Rad Gel Doc XR+ system

S3A Fig

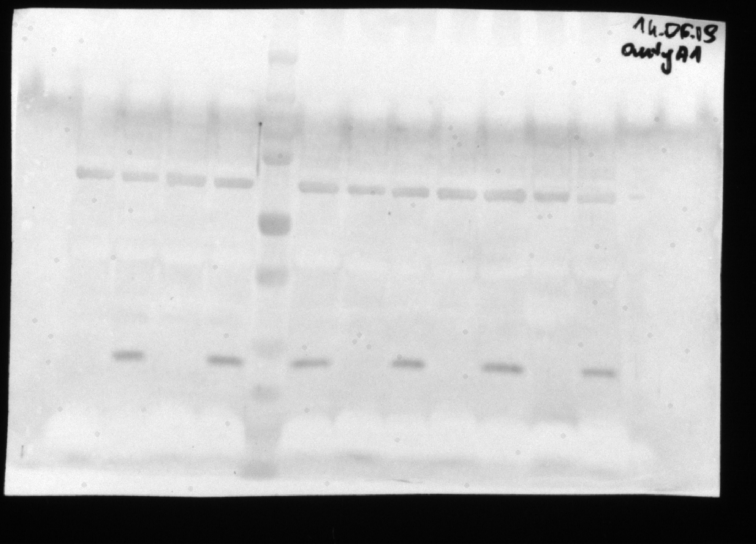
X X X X 1 2 3 4 5 6 X X



- 1 - Molecular weight marker
- 2 - *C. jejuni* 81116 WT
- 3 - $\Delta dsbA1$
- 4 - $\Delta c8j_1298$
- 5 - $\Delta c8j_1298/pI1298$
- 6 - $\Delta c8j_1298/chr1298$

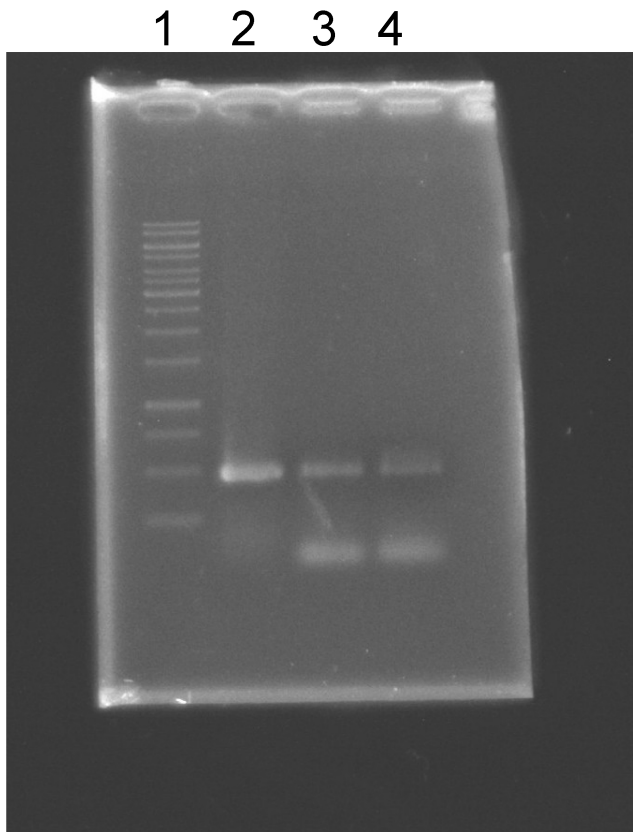
S3B Fig

X X X X 1 2 3 4 5 6 X X



- 1 - Molecular weight marker
- 2 - *C. jejuni* 81116 WT
- 3 - $\Delta dsbA1$
- 4 - $\Delta c8j_1298$
- 5 - $\Delta c8j_1298/pI1298$
- 6 - $\Delta c8j_1298/chr1298$

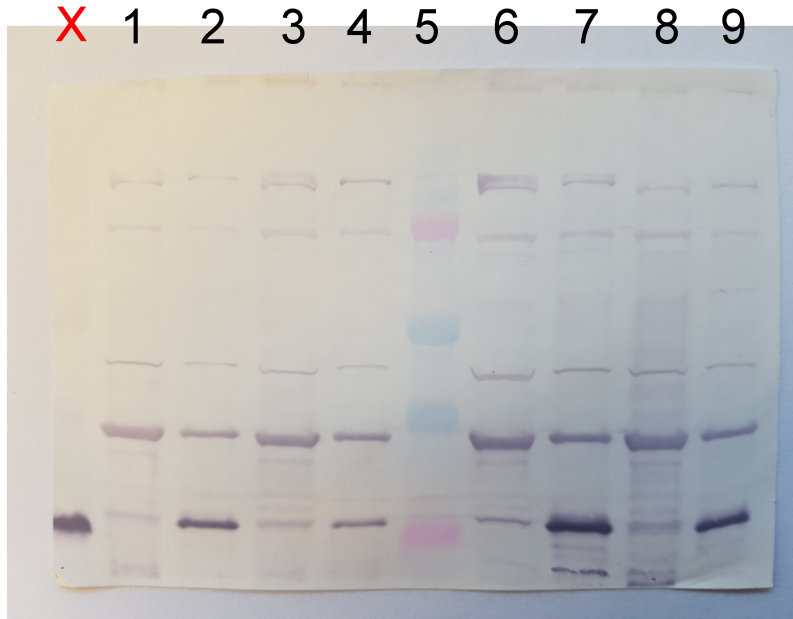
S4 Fig



- 1 - Molecular weight marker
- 2 - gDNA *C. jejuni* 81116 WT
- 3 - cDNA *C. jejuni* 81116 WT
- 4 - cDNA $\Delta c8j_{1298}$

captured using Bio-Rad Gel Doc XR+ system

S6 Fig



- 1 - $\Delta dsbA$ /pI1298 - ara
- 2 - $\Delta dsbA$ /pI1298 + ara
- 3 - $\Delta dsbC$ /pI1298 - ara
- 4 - $\Delta dsbC$ /pI1298 + ara
- 5 - Molecular weight marker
- 6 - $\Delta mdoG\Delta dsbC$ /pI1298 - ara
- 7 - $\Delta mdoG\Delta dsbC$ /pI1298 + ara
- 8 - $\Delta dsbA\Delta dsbB$ /pI1298 - ara
- 9 - $\Delta dsbA\Delta dsbB$ /pI1298 + ara

captured using mobile phone