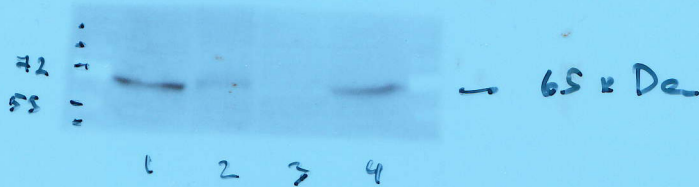


RAW IMAGES FOR FIG 2D



- 1- Primary CD cells Cre+; V2 (+)
- 2- Primary CD cells Cre+; V2 R/D
- 3- E17.5 Kidney Cre-; V2 D/D
- 4- E17.5 Kidney Cre-; V2 R/R

sel 9.5%

Anti-Vangl2 (rat)
1:1000

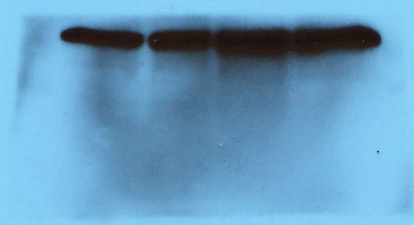
Donkey HRP-goat 1:10000
(in si milk buffer)

15 min (after suppl. wash).

P.S. Dilute HRP-goat in TBST)
1:10000

13/06/19

RAW IMAGES FOR FIG 2D



GAPDH

5 E17.5 kidney P1/P1
2 E17.5 kidney D/D
1 Cre^{+/+}

1 unit

After strip