

The following charts reflect the ranked feature importance of the XGBoost algorithm. Feature importance is the number of times a feature used to split the data across all trees.

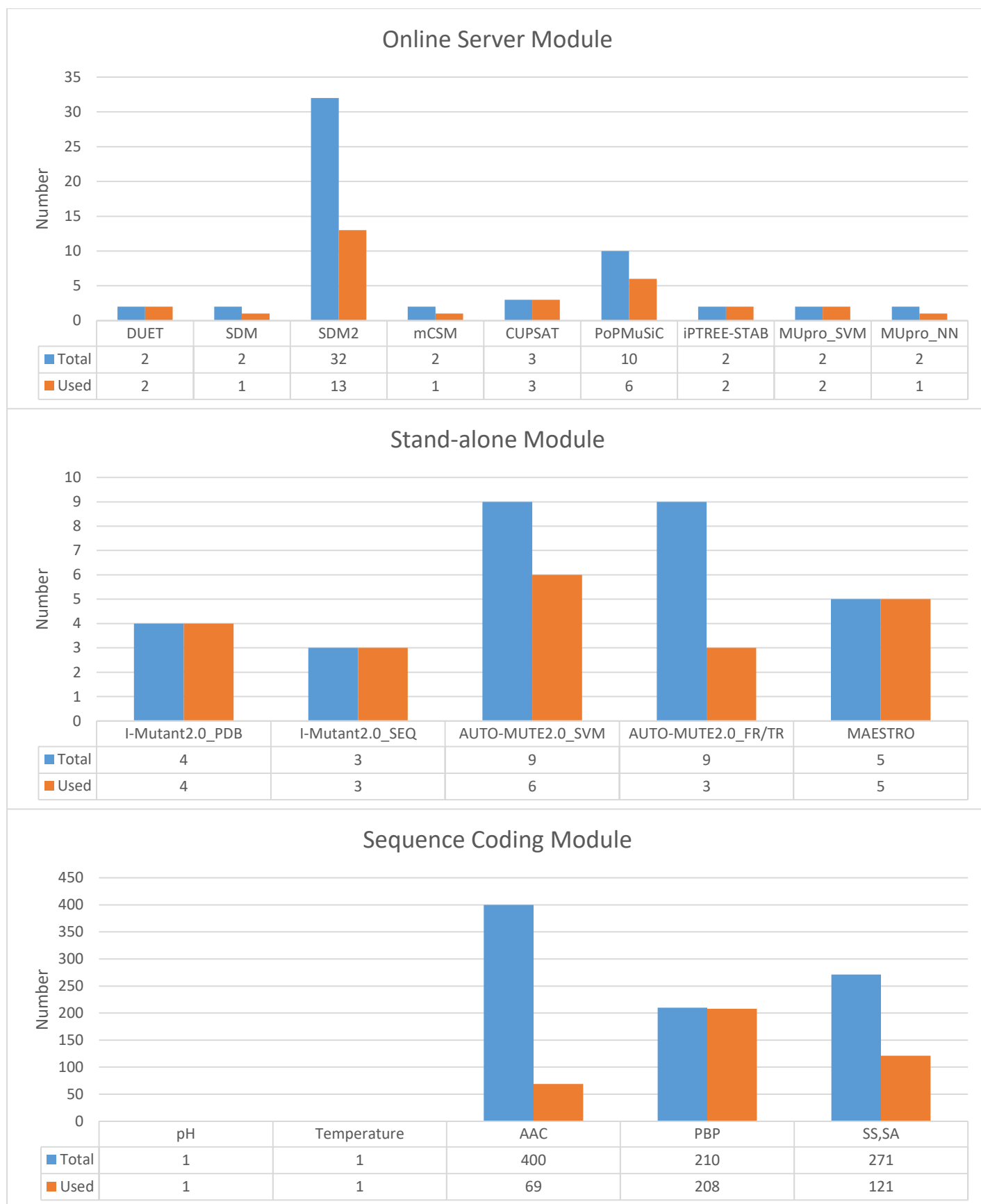


Fig. S1. Feature usage with the iStable2.0\_PDB model.

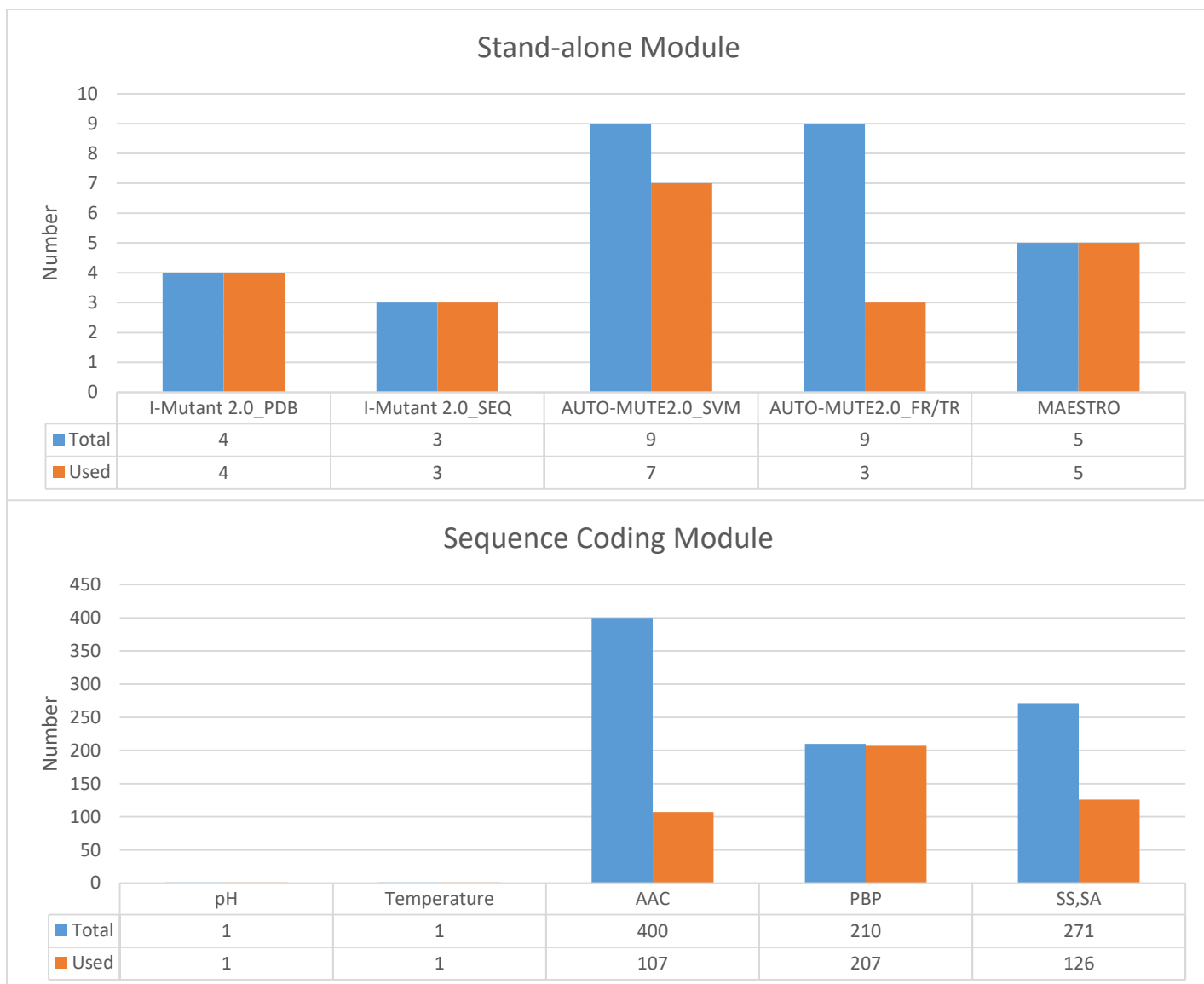


Fig. S2. Feature usage with the iStable2.0 PBD\_SASC model.

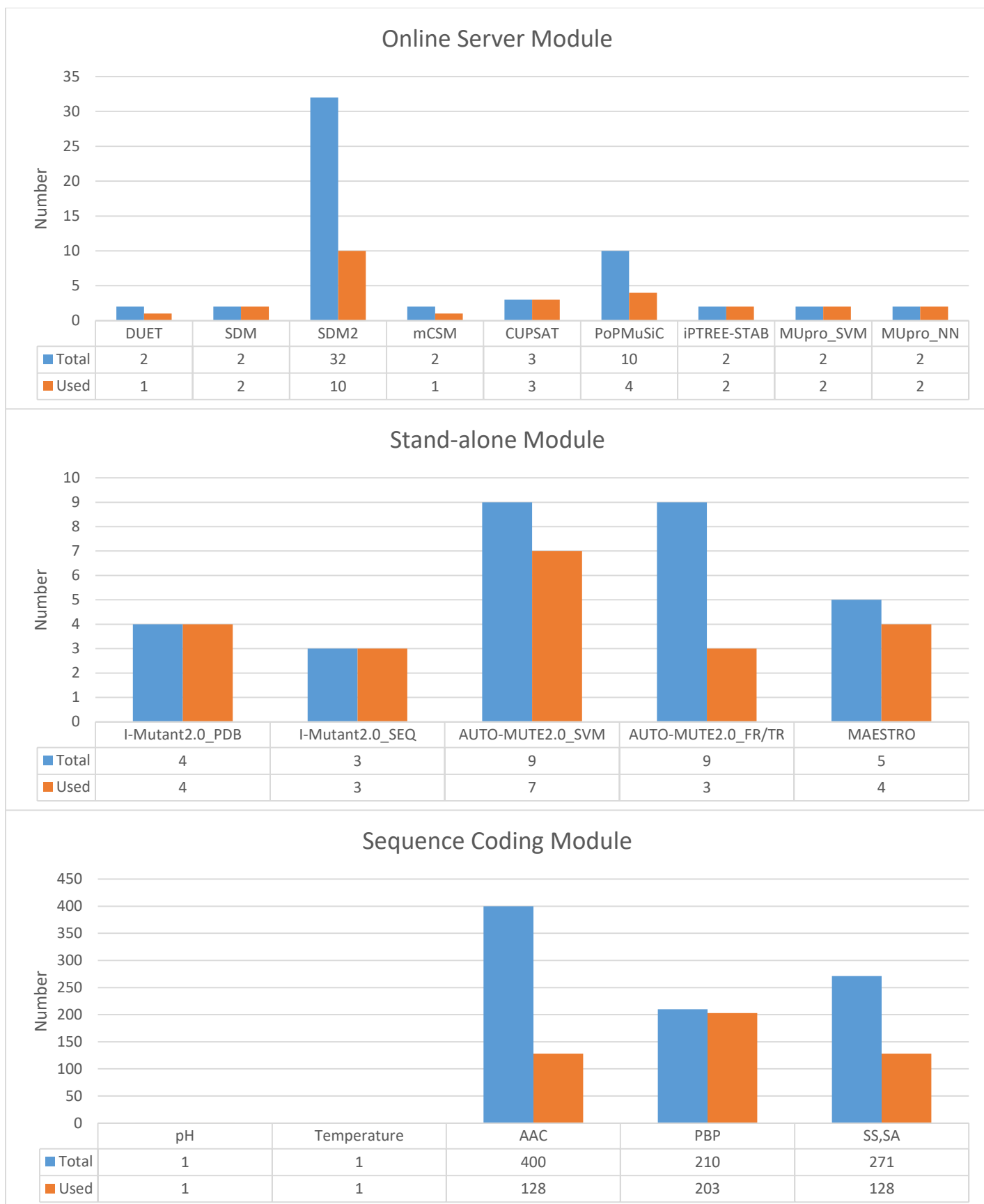


Fig. S3. Feature usage with the iStable2.0\_PDB\_Regression model.

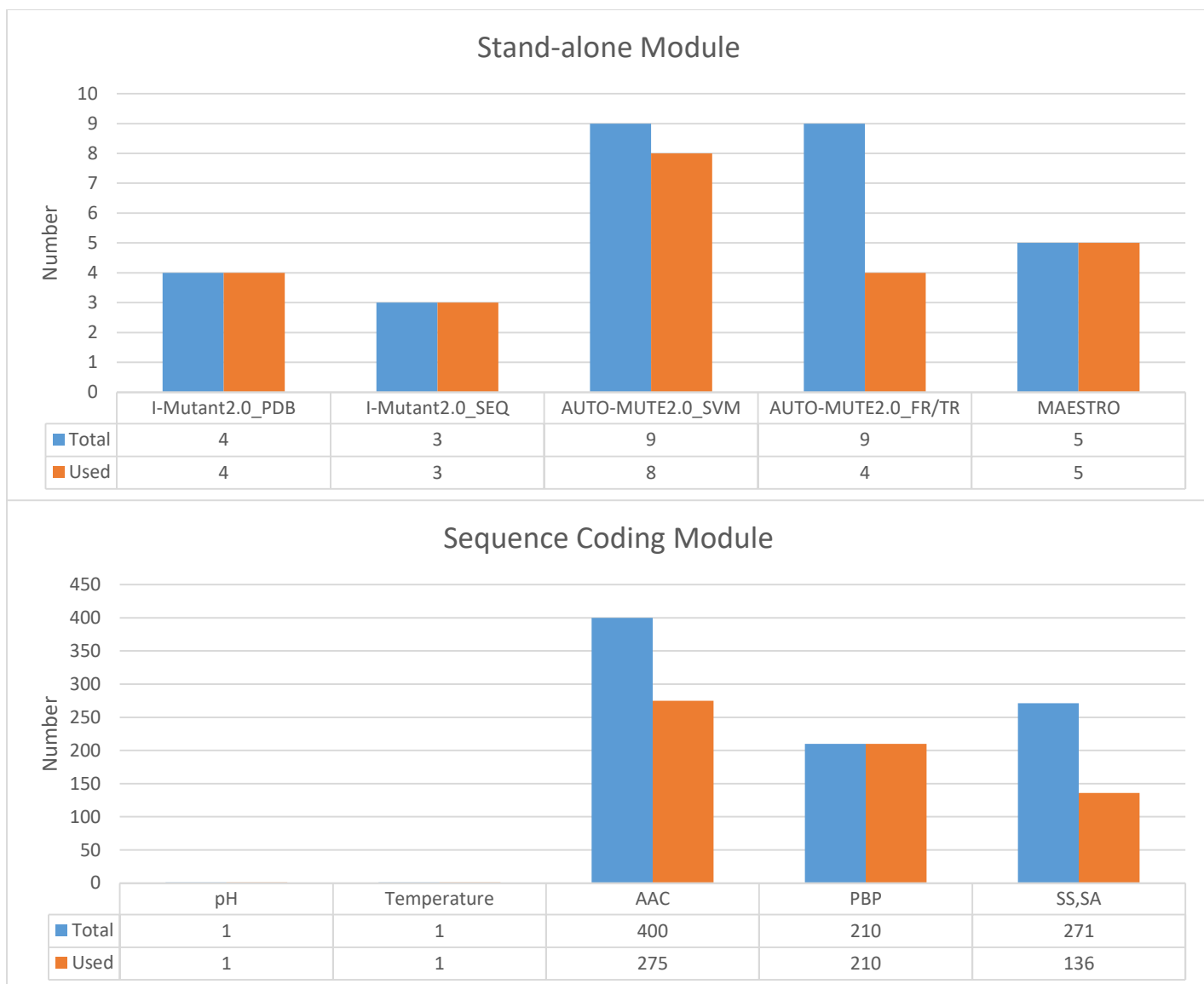


Fig. S4. Feature usage with the iStable2.0\_PDB\_Regression\_SASC model.

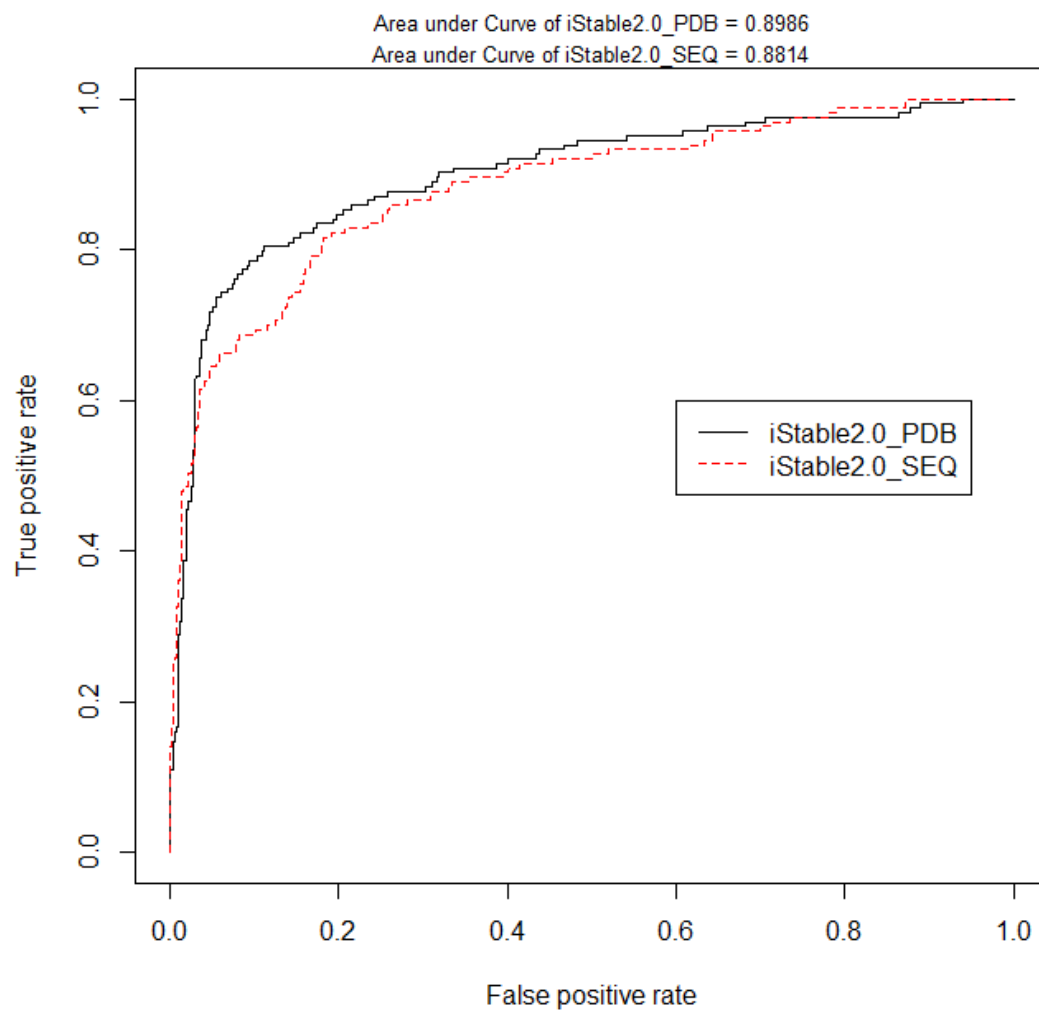


Fig. S5. The ROC curves of iStable2.0 with classification models.