

Fig. S1. SDS-PAGE analysis of mutansucrase purification. Lane 1: crude enzyme; Lane 2: DEAE-sepharose unbound protein; Lane 3: purified mutansucrase.

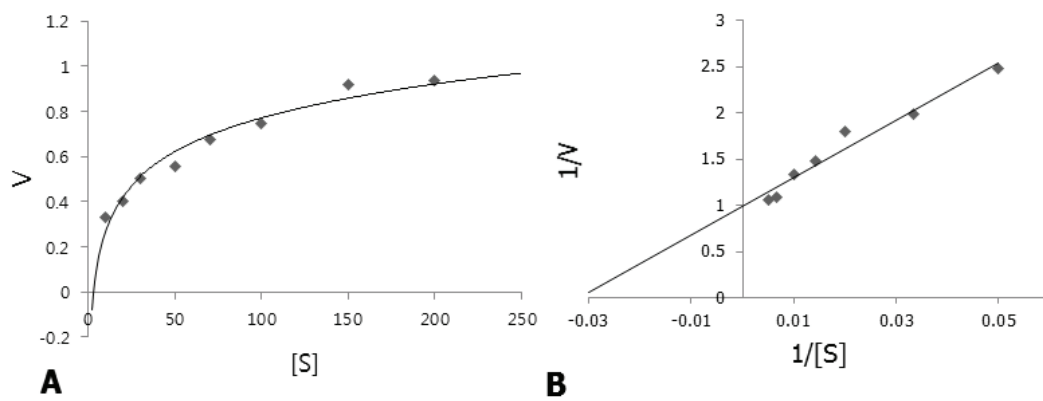


Fig. S2. Michaelis-Menten kinetic (A) and Lineweaver-Burk (B) plot of the purified mutansucrase.

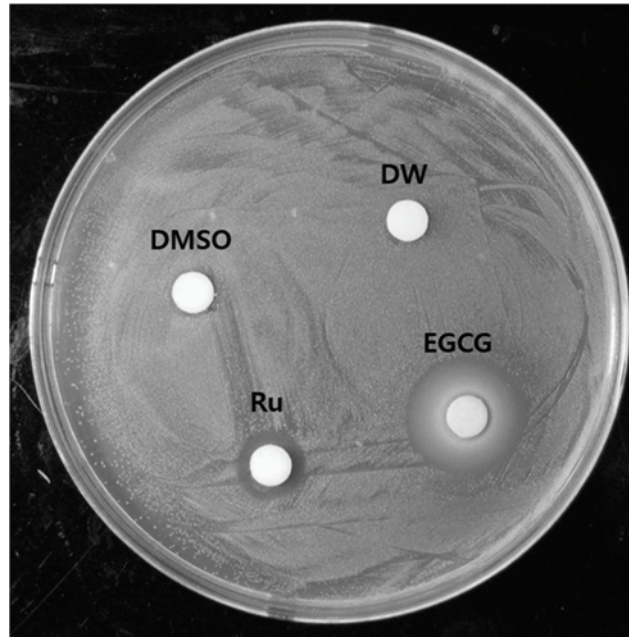


Fig. S3. Antimicrobial susceptibility test of Rub for *Streptococcus mutans*; DW, distilled water; DMSO, dimethyl sulfoxide; Ru, 250 mM rubusoside; EGCG, 250 mM epigallocatechin gallate (positive control).