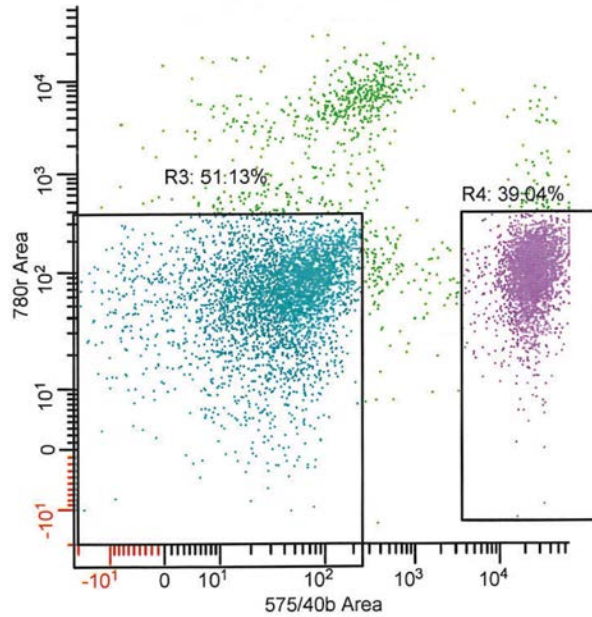


A



Supplemental Figure 2. Collection of beta cell and non-beta cell populations by FACS.

(A) Islets isolated from multiple *RIP-cre;R26R^{Tomato}* mice were pooled together and processed for fluorescence activated cell sorting (FACS). Islet cells were sorted into two populations: tomato-positive beta cells (R4), and tomato-negative non-beta cells (R3, islet cells expressing glucagon, somatostatin, ghrelin and pancreatic polypeptide).