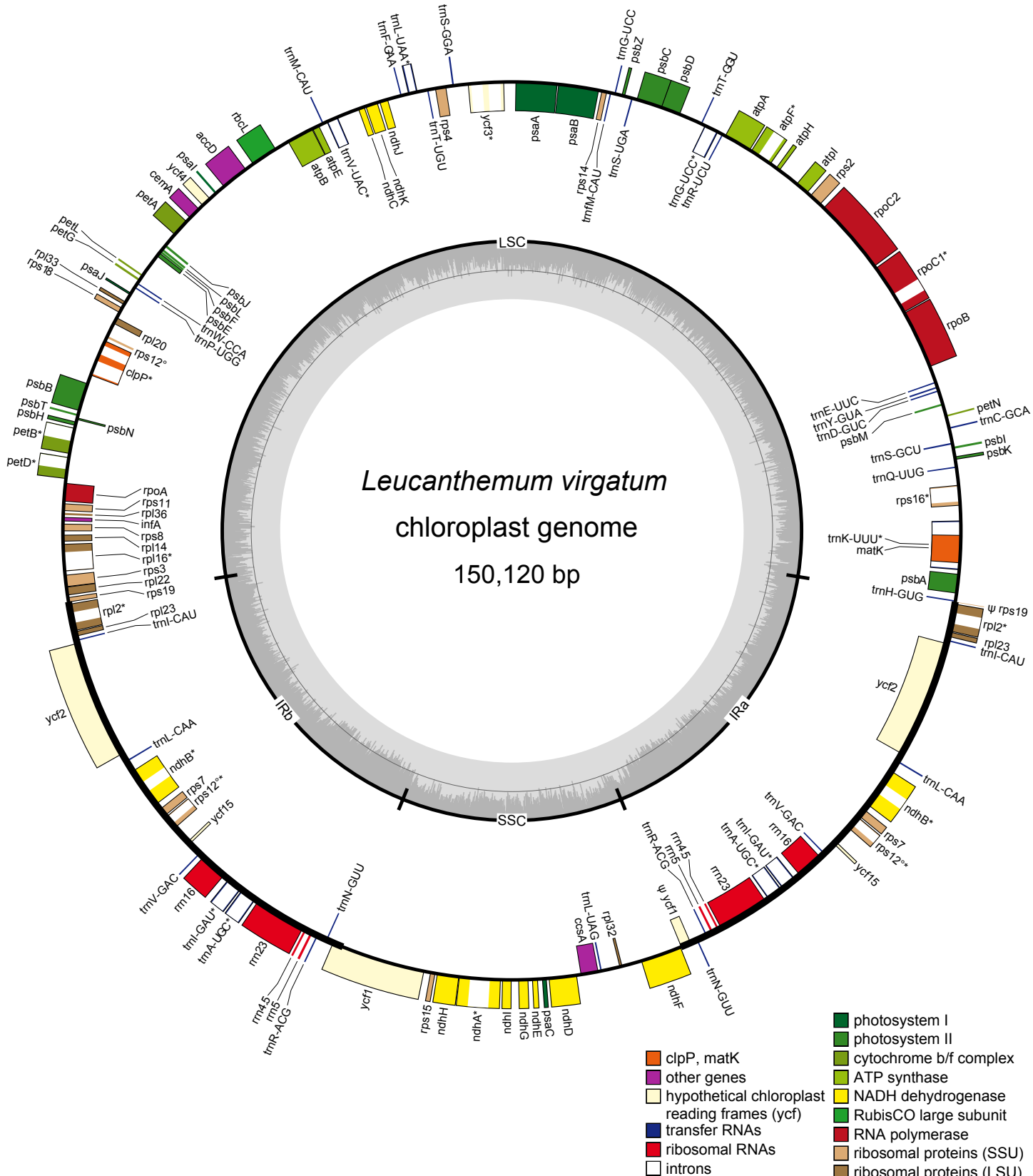


*Leucanthemum virgatum*  
chloroplast genome  
150,120 bp



- photosystem I
- photosystem II
- cytochrome b/f complex
- ATP synthase
- NADH dehydrogenase
- RubisCO large subunit
- RNA polymerase
- ribosomal proteins (SSU)
- ribosomal proteins (LSU)

- clpP, matK
- other genes
- hypothetical chloroplast reading frames (ycf)
- transfer RNAs
- ribosomal RNAs
- introns