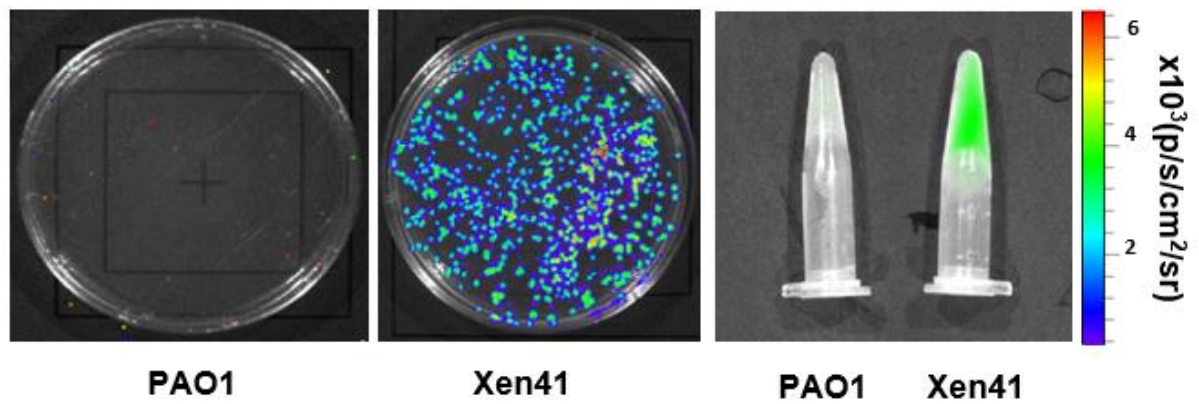
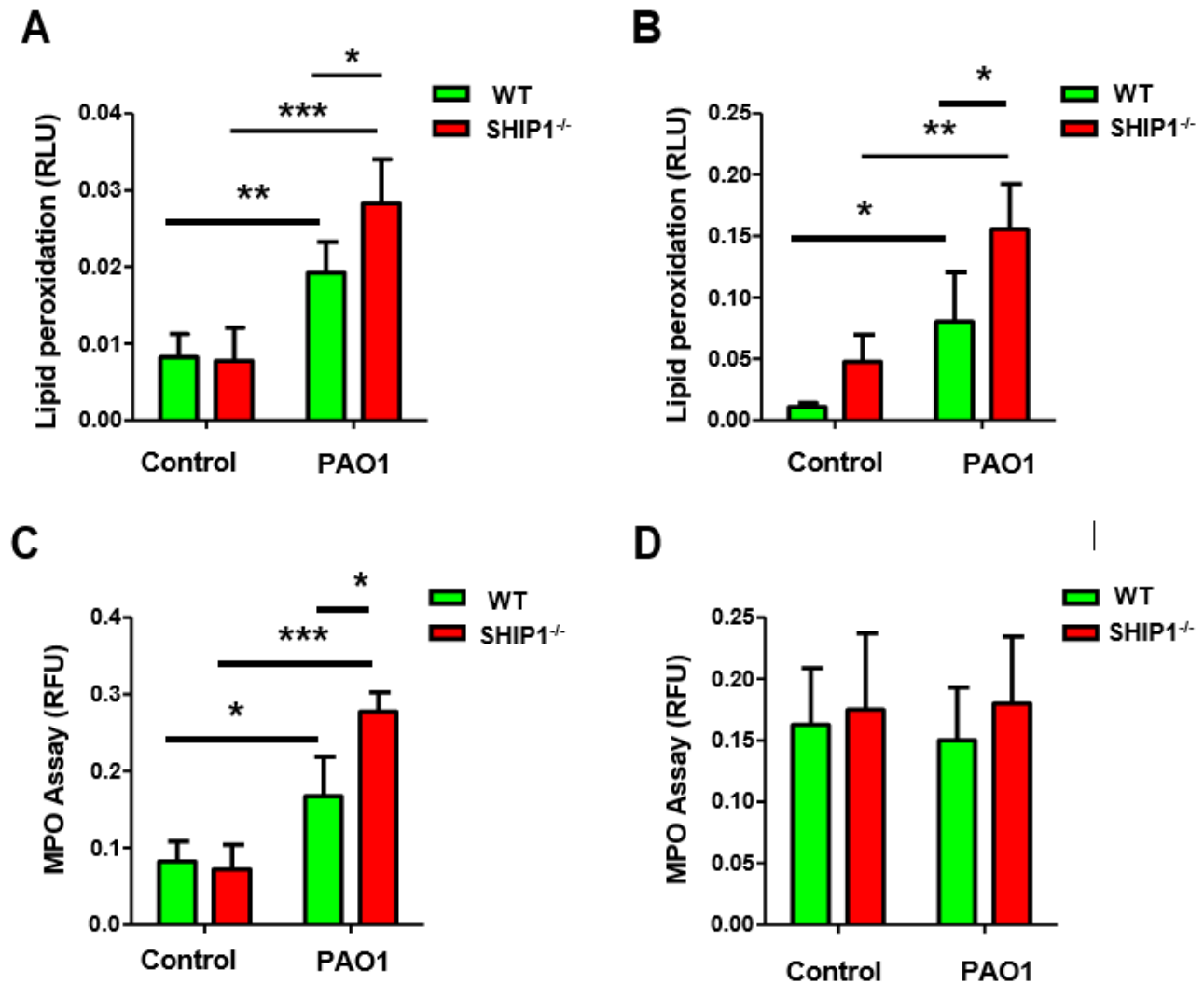


*Supplementary Material*

**A**

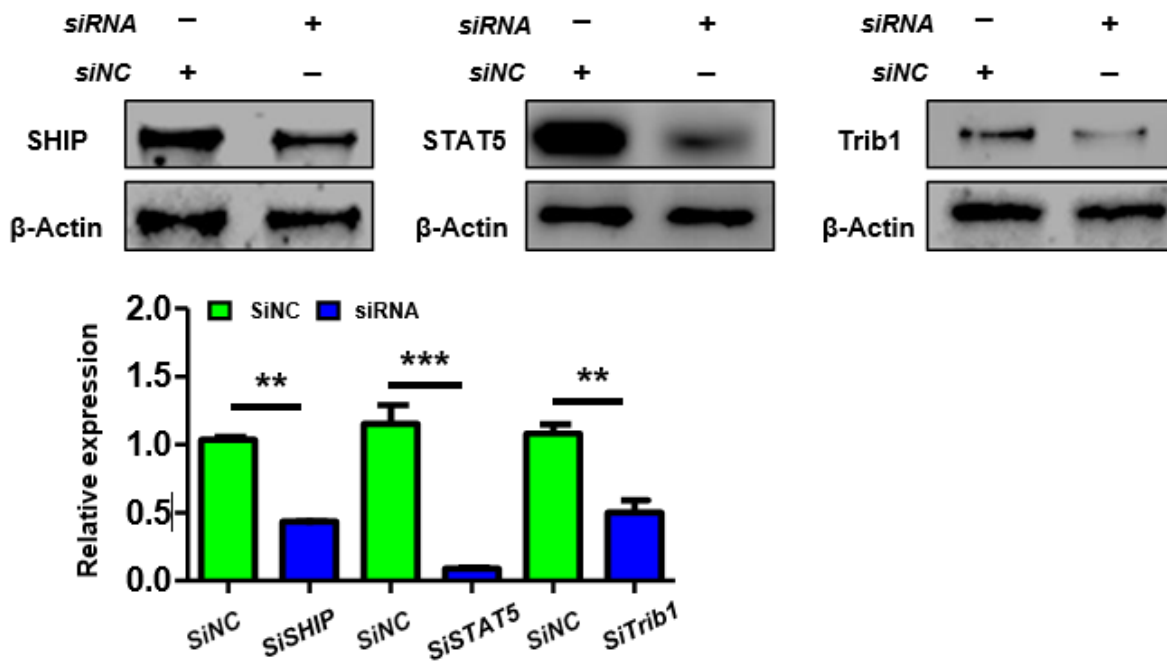


**Figure S1. Analyzing bacterial bioluminescence.** (A) Bioluminescence of Xen41 bacteria grown on a petri-dish (Left) and an Eppendorf tube (right). Image was obtained using IVIS XR11 system.



**Figure S2. SHIP1 deficiency aggravated oxidative damage upon Pa infection.** Peroxidation product was measured by a colorimetric assay (Calbiochem) according to the manufacturer's instructions in the liver (A) and kidney (B). Elevated activity of MPO was observed in the liver (C) and the kidney (D). Absorbance was read at 460 nm at 2 minutes intervals. (The data are means  $\pm$ SEM and are representative of three independent experiments, student One Way ANOVA plus Tukey post hoc test, statistically significant differences are indicated as \* $P < 0.05$ , \*\* $P < 0.01$ ).

**A**



**Figure S3. RNAi effectively knocks down the expression of the protein.** Knockout efficiency was detected by western blotting (A). (The data are means  $\pm$  SEM and are representative of two independent experiments, Student's t test, statistically significant differences are indicated as  $*P < 0.05$ ,  $**P < 0.01$ ).