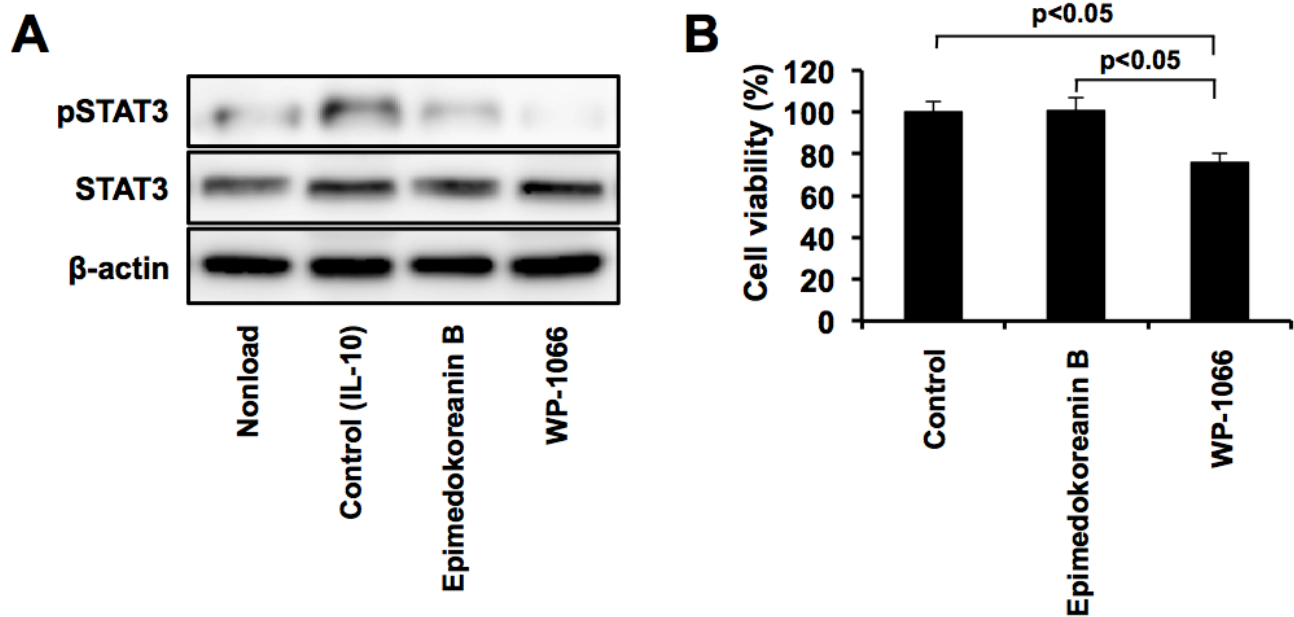


Supplementary Material

1.1 Supplementary Figures



Supplementary Figure. Effects of STAT3 inhibitor on STAT3 activation and cell viability in human macrophages. Human monocyte-derived macrophages were incubated with WP1066 (5 μ M), a STAT3 inhibitor, and epimedokoreanin B (5 μ M) in the presence of IL-10 (20 nM) for 24 h, followed by determination of phosphorylated STAT3, STAT3, and β -actin expressions by western blot analysis (A). Human monocyte-derived macrophages were incubated with WP1066 (5 μ M), a STAT3 inhibitor, and epimedokoreanin B (5 μ M) for 24 h, followed by determination of cell viability using the WST-8 assay (B).