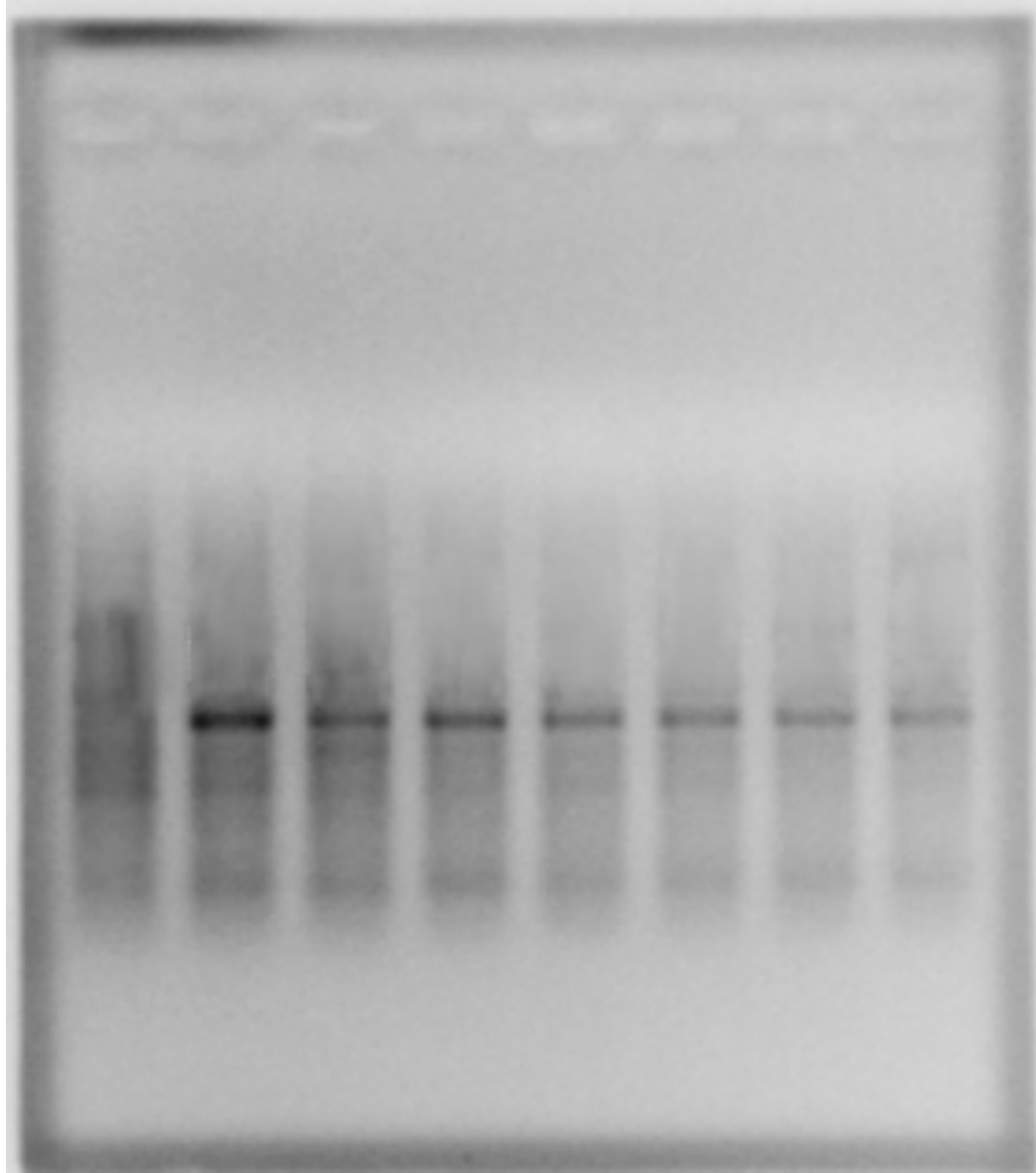


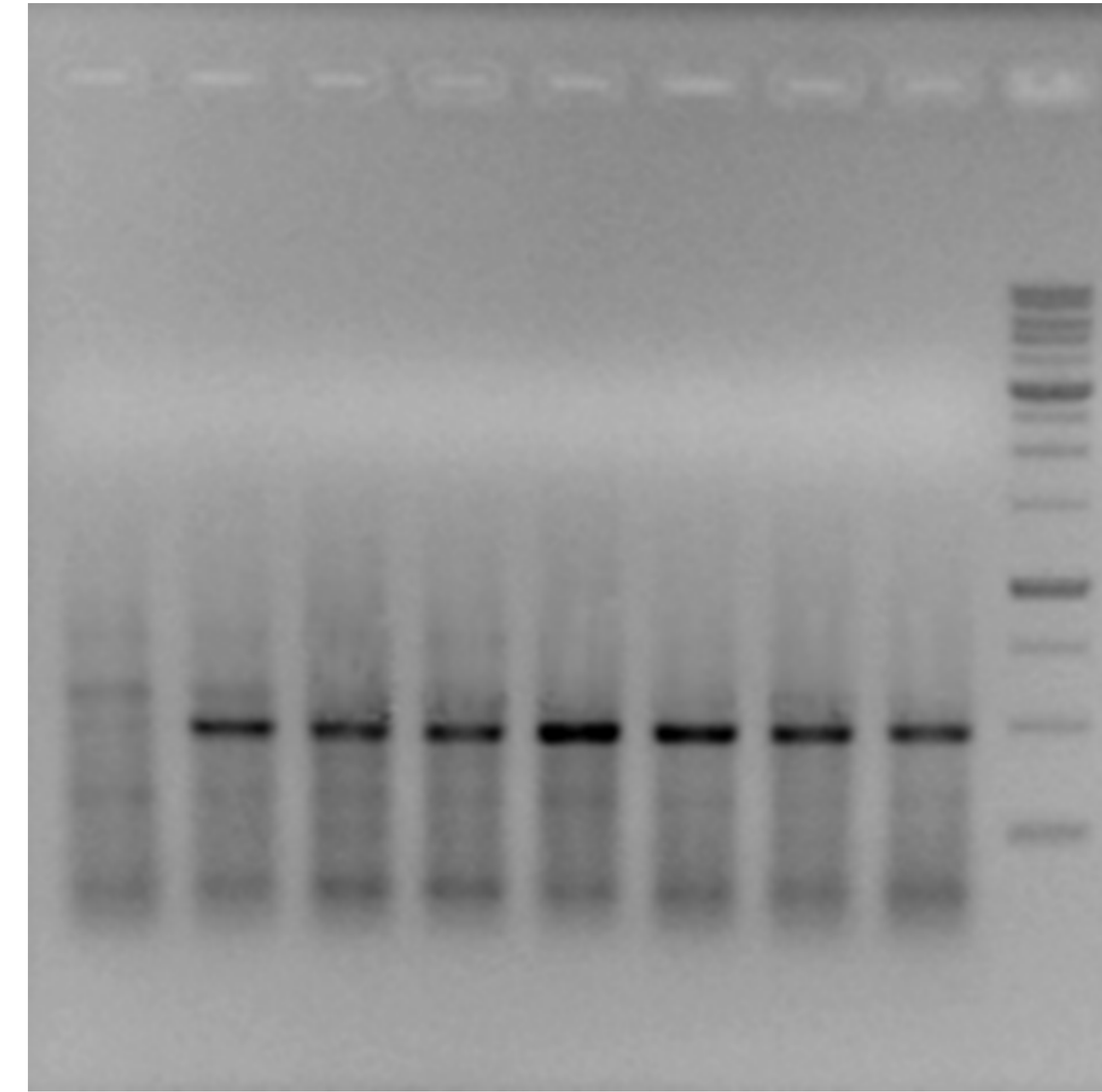
The images of mRNA expression were captured by Gel Documentation and analyzed by automated imaging (Bio Rad).

iNOS mRNA expression

HCFP aqueous extract



HCFP methanolic extract



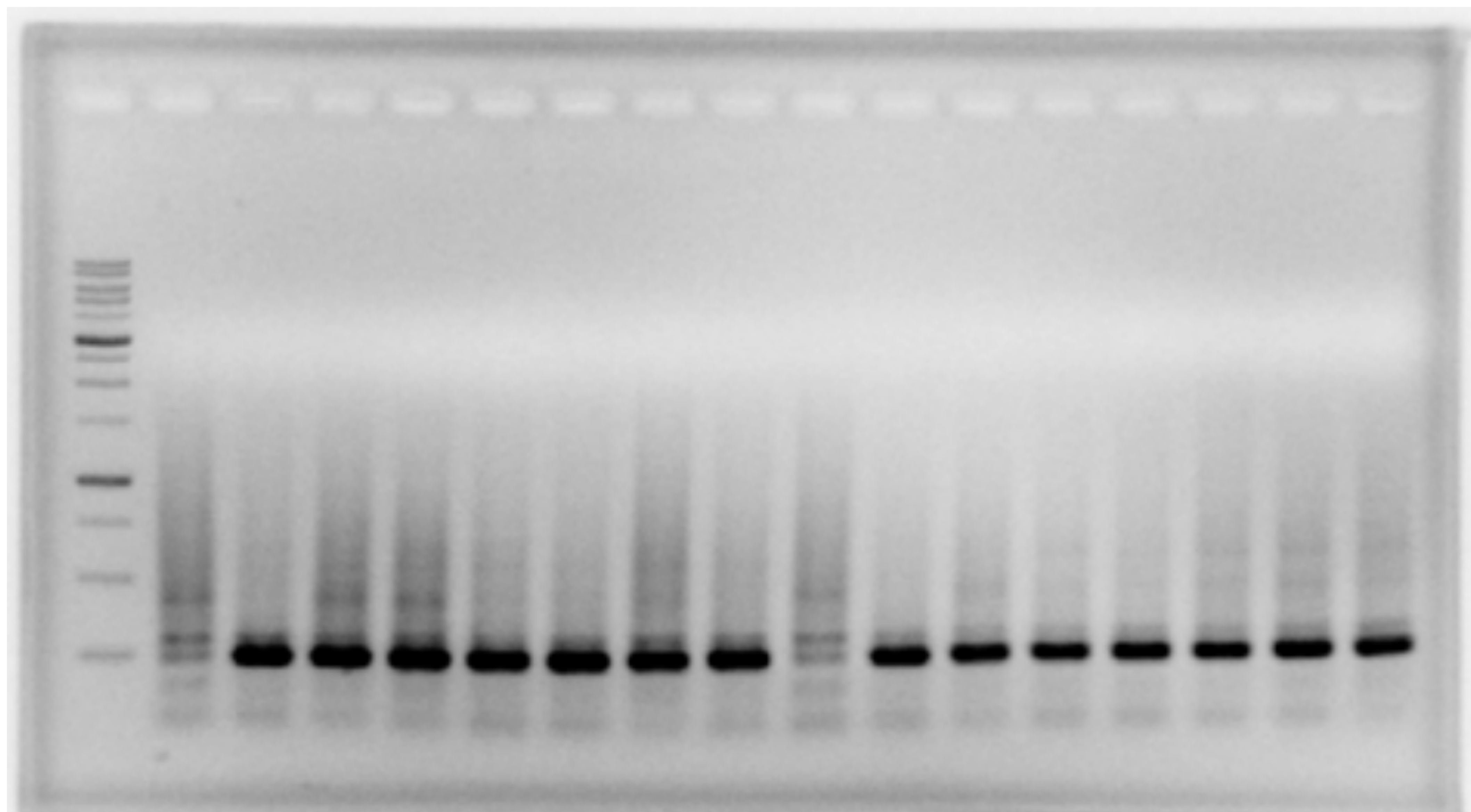
HCFP aqueous extract (µg/mL)	-	-	-	25	50	250	550	750
LPS (1 µg/mL)	-	+	+	+	+	+	+	+
DCF (25 µg/mL)	-	-	+	-	-	-	-	-

HCFP methanolic extract (µg/mL)	-	-	-	4	6	8	10	12
LPS (1 µg/mL)	-	+	+	+	+	+	+	+
DCF (25 µg/mL)	-	-	+	-	-	-	-	-

COX-2 mRNA expression

HCFP aqueous extract

HCFP methanolic extract



HCFP aqueous extract (µg/mL)	-	-	-	25	50	250	550	750	-	-	-	4	6	8	10	12	HCFP methanolic extract (µg/mL)
LPS (1 µg/mL)	-	+	+	+	+	+	+	+	-	+	+	+	+	+	+	+	LPS (1 µg/mL)
DCF (25 µg/mL)	-	-	+	-	-	-	-	-	-	-	+	-	-	-	-	-	DCF (25 µg/mL)

IL-1 β mRNA expression

HCFP aqueous extract



HCFP methanolic extract

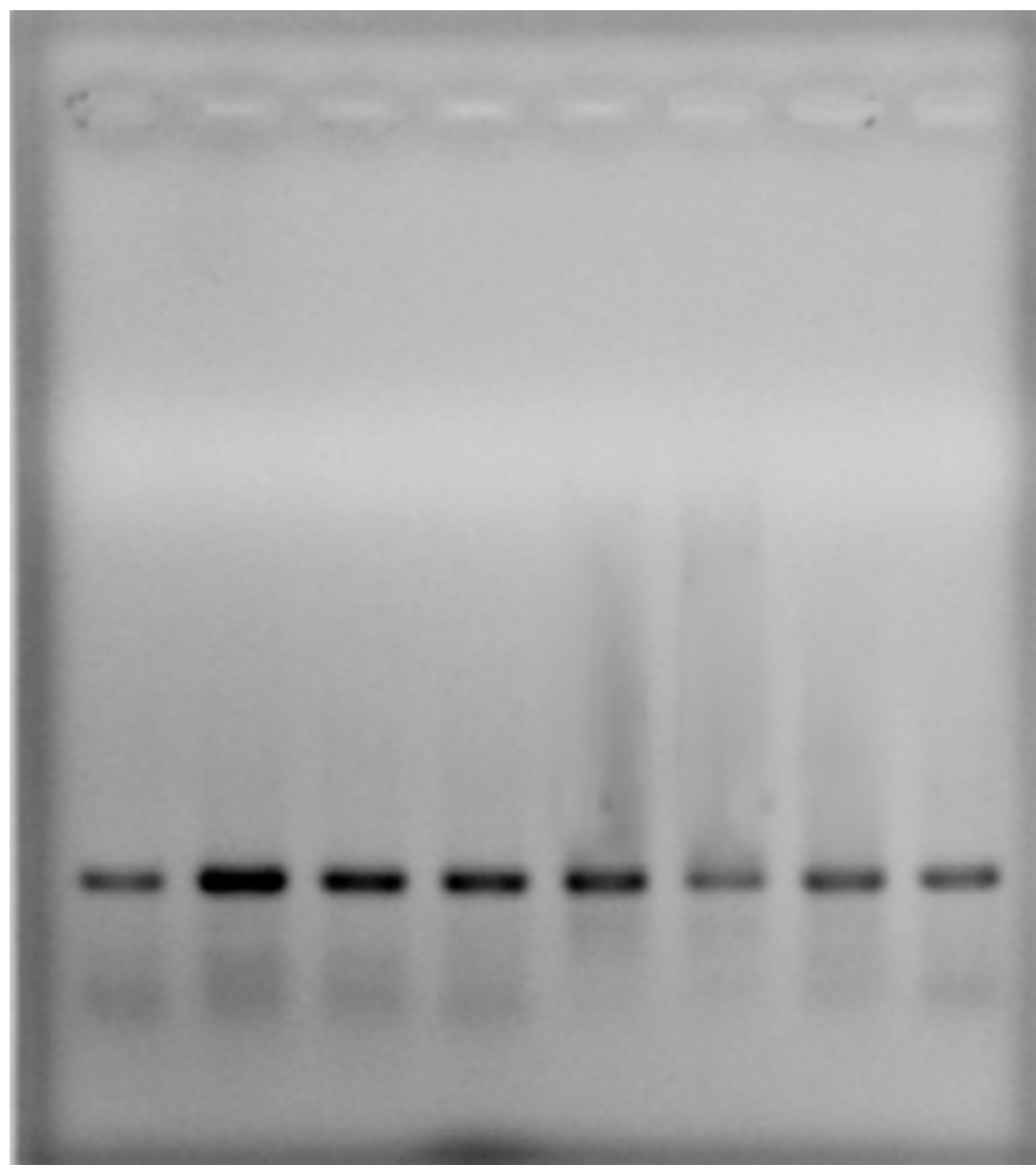


HCFP aqueous extract (μg/mL)	-	-	-	25	50	250	550	750
LPS (1 μg/mL)	-	+	+	+	+	+	+	+
DCF (25 μg/mL)	-	-	+	-	-	-	-	-

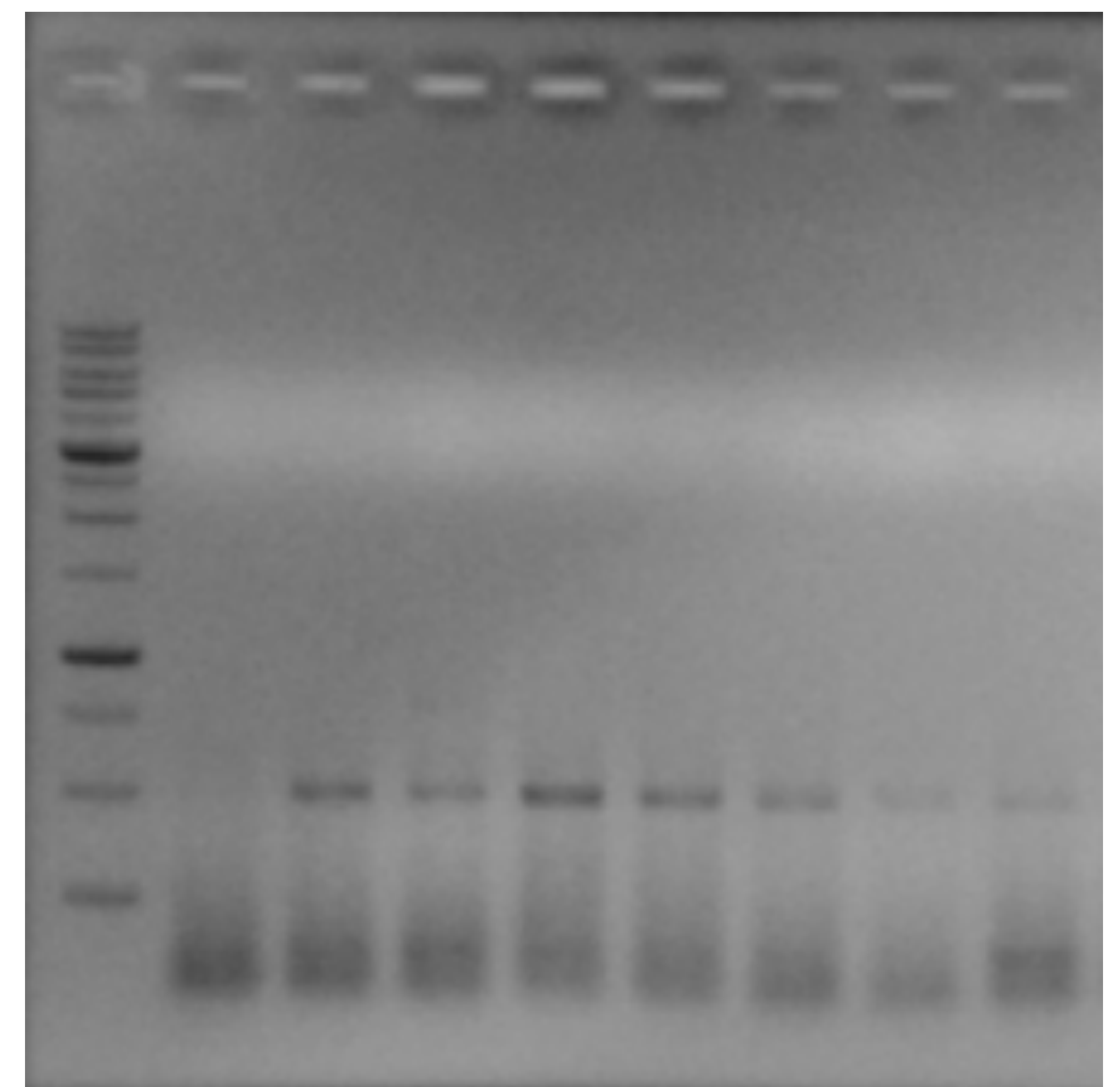
HCFP methanolic extract (μg/mL)	-	-	-	4	6	8	10	12
LPS (1 μg/mL)	-	+	+	+	+	+	+	+
DCF (25 μg/mL)	-	-	+	-	-	-	-	-

TNF- α mRNA expression

HCFP aqueous extract



HCFP methanolic extract



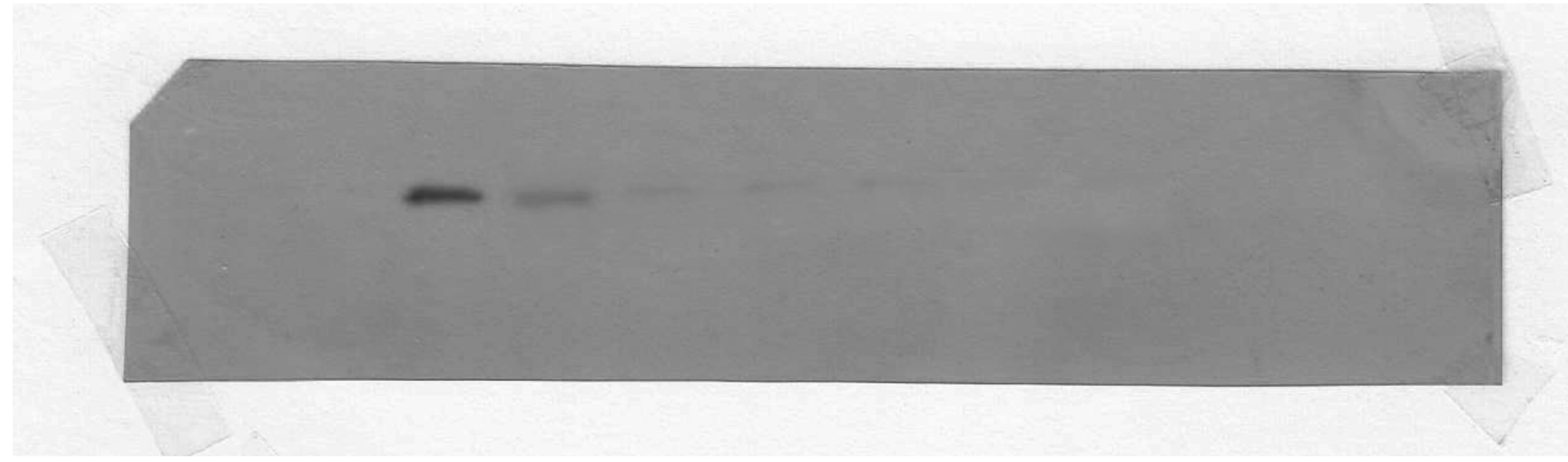
HCFP aqueous extract (μg/mL)	-	-	-	25	50	250	550	750
LPS (1 μg/mL)	-	+	+	+	+	+	+	+
DCF (25 μg/mL)	-	-	+	-	-	-	-	-

HCFP methanolic extract (μg/mL)	-	-	-	4	6	8	10	12
LPS (1 μg/mL)	-	+	+	+	+	+	+	+
DCF (25 μg/mL)	-	-	+	-	-	-	-	-

The results of protein expression were visualized using ECL detection reagent and exposed by X-ray film.

Protein expression

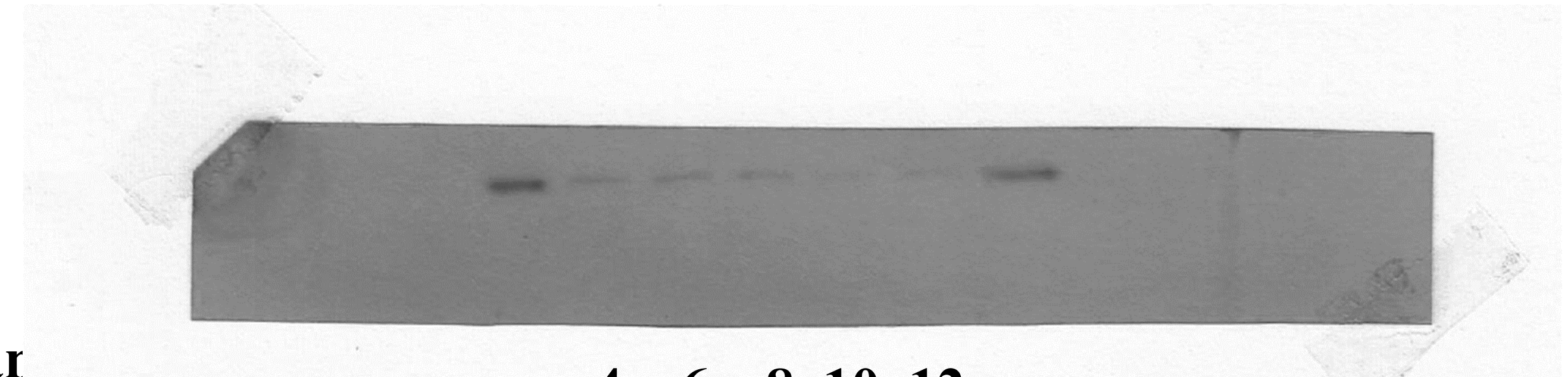
HCFP aqueous extract



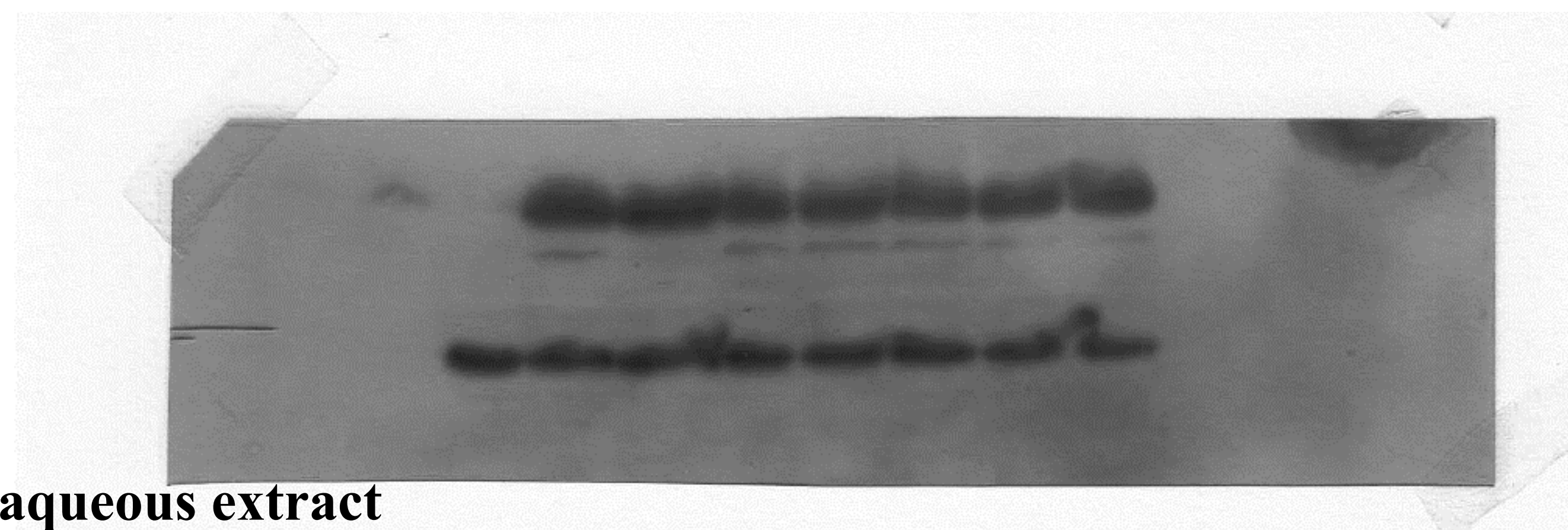
HCFP aqueous extract (µg/mL)	-	-	25	50	250	550	750	-
LPS (1 µg/mL)	-	+	+	+	+	+	+	+
DCF (25 µg/mL)	-	-	-	-	-	-	-	+

HCFP methanolic extract

iNOS



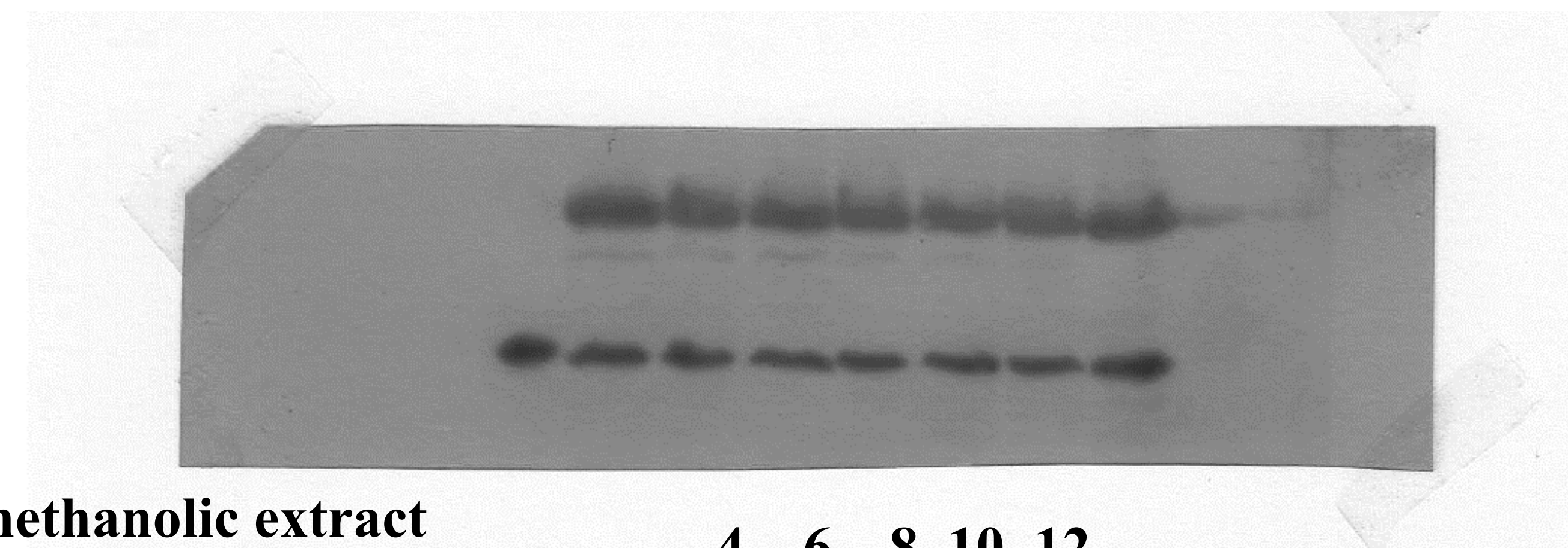
HCFP methar (µg/mL)	-	-	4	6	8	10	12	-
LPS (1 µg/mL)	-	+	+	+	+	+	+	+
DCF (25 µg/mL)	-	-	-	-	-	-	-	-



HCFP aqueous extract (µg/mL)	-	-	25	50	250	550	750	-
LPS (1 µg/mL)	-	+	+	+	+	+	+	+
DCF (25 µg/mL)	-	-	-	-	-	-	-	+

COX-2

B-Actin



HCFP methanolic extract (µg/mL)	-	-	4	6	8	10	12	-
LPS (1 µg/mL)	-	+	+	+	+	+	+	+
DCF (25 µg/mL)	-	-	-	-	-	-	-	-