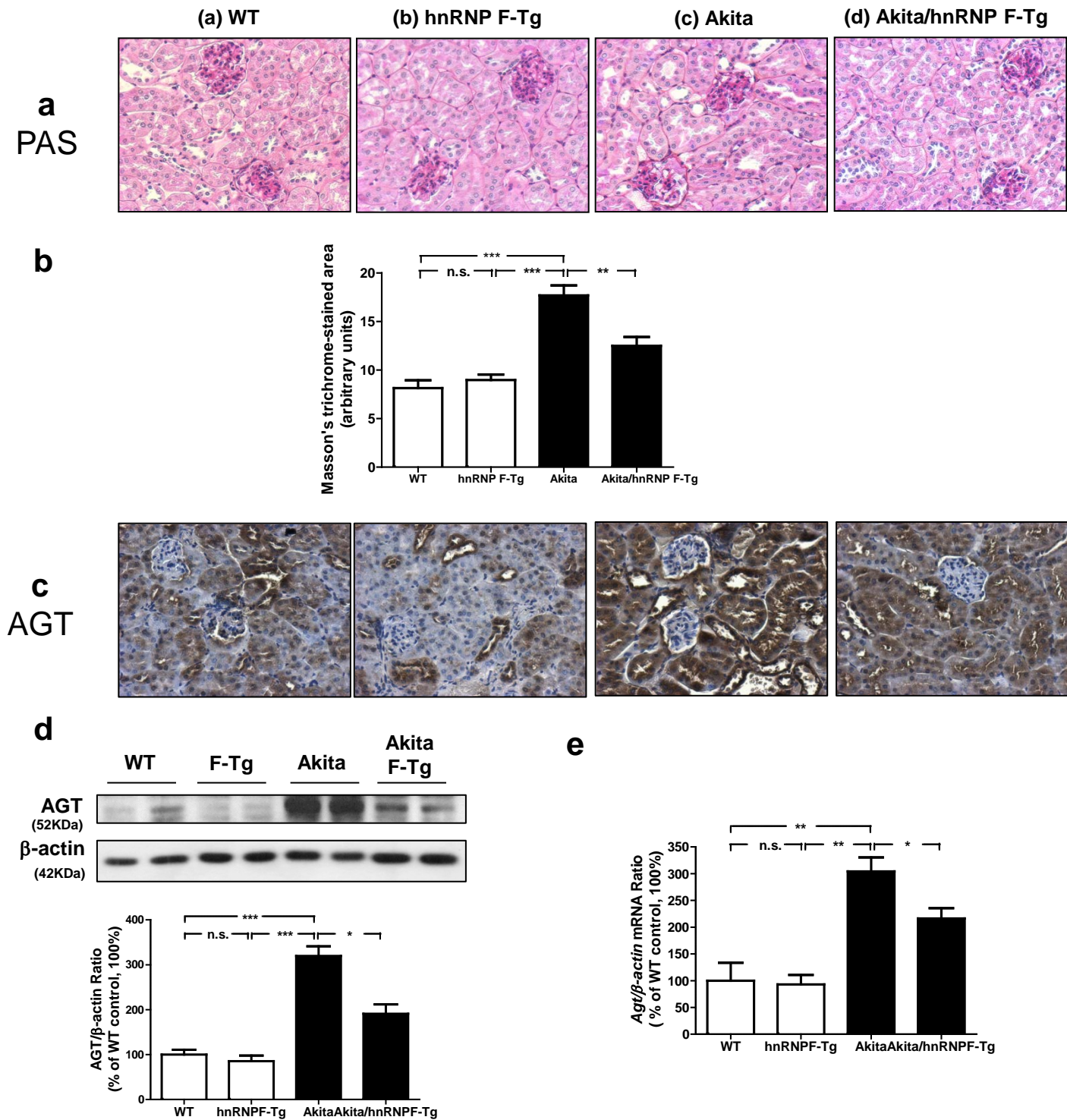


ESM Fig. 1



ESM Fig. 1. (a) Periodic acid Schiff (PAS) staining in kidneys of WT control, hnRNP-Tg, Akita and Akita hnRNP F-Tg mice. (b) Semi-quantitative analysis of Masson's trichrome staining in glomerulo-tubular areas of kidneys of WT control, hnRNP-Tg, Akita and Akita hnRNP F-Tg mice. Immunohistochemical staining (c), Western blotting (d) and qPCR (e) of Agt expression in kidneys of WT control, hnRNP-Tg, Akita and Akita hnRNP F-Tg mice. Values are mean+SEM corrected to β -actin, n=6. (* p <0.05; ** p <0.01; NS, not significant).