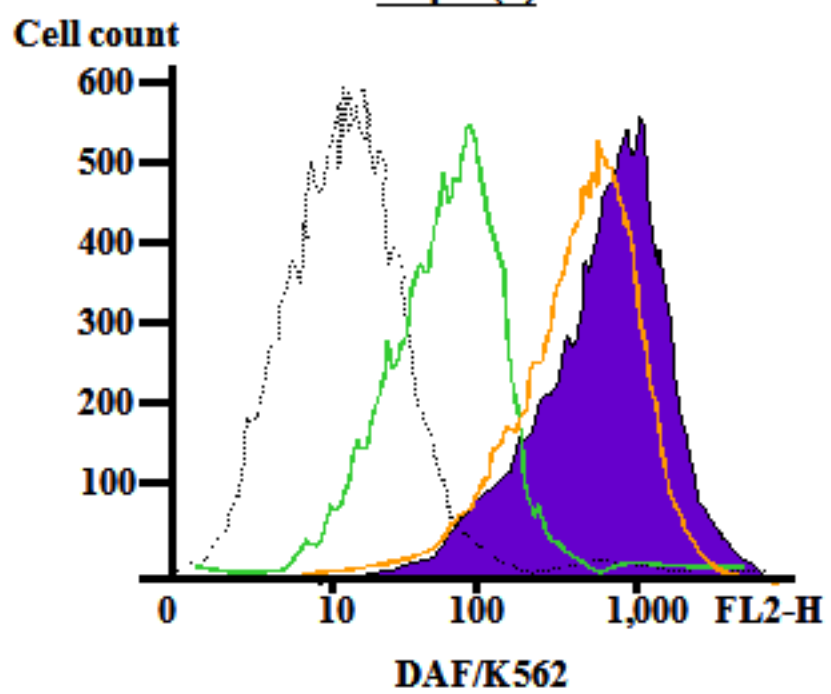


**Filipin (+)**



Supplementary Figure 6. ACE-S results in shedding of DAF from K562 cell surface. K562 cells were treated with filipin and then with 1.0  $\mu$ M ACE-S as described in the Methods. The expression of DAF was examined by FACS analyses using anti-DAF antibody. Purple filled, ACE (-); green line, ACE (+); yellow line, PI-PLC-treated; black dot, background.