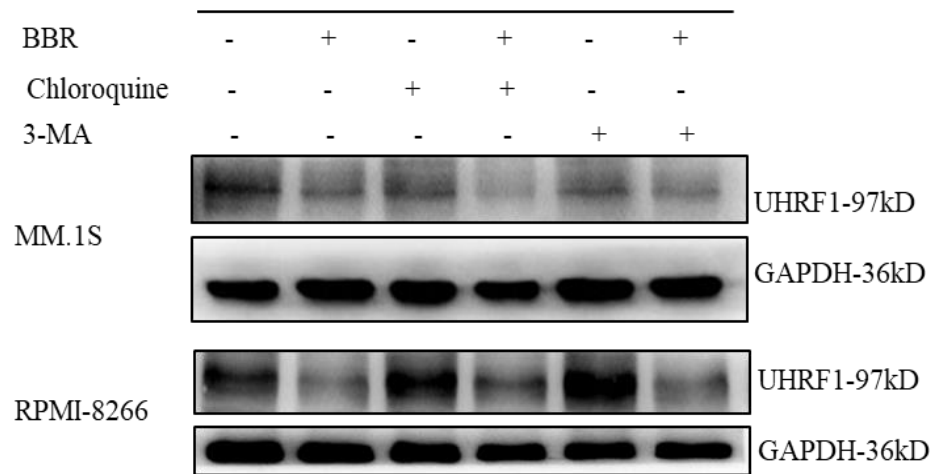


Additional file 10, Figure S6



Additional file 10, Figure S6. MM.1S and RPMI-8266 cells were treated with lysosome inhibitor (chloroquine 100 μ M), autophagy inhibitor (3-MA, 25 μ M) or BBR (25 μ M) for indicated time. Cells lysates were harvested and subjected to western blotting with the anti-UHRF1 and anti-GAPDH antibodies.